

LEGEND	
BP	EXISTING BOLLARD POST
CO	EXISTING SEWER CLEANOUT
FH	EXIST. FIBER OPTIC HANDHOLE
FH	EXISTING FIRE HYDRANT
GV	EXISTING GAS VALVE
GM	EXISTING GAS METER
GW	EXISTING GUY WIRE
L/S	EXISTING LANDSCAPE AREA
PL	EXISTING PLANTER
SMH	EXISTING SEWER MANHOLE
S	EXISTING SIGN
SL	EXISTING STREET LIGHT
TRH	EXISTING TRAFFIC HANDHOLE
WV	EXISTING WATER VALVE
PT	EXISTING PALM TREE
T	EXISTING TREE

CROWN CASTLE
 SMALL WIRELESS FACILITIES
 DRB 19-0437 (FL 6477)
 225 South Pointe Drive

PROPOSED SITE PLAN
 JULY 25, 2019
 N.T.S.

R.J. HEISENBOTTLE ARCHITECTS, P.A.
 2199 PONCE DE LEON BLV, CORAL GABLES, FLORIDA 33134
 PHONE: 305.446.7799 / FAX: 305.446.9275
 FLORIDA REGISTRATION NUMBER: AR 0010865

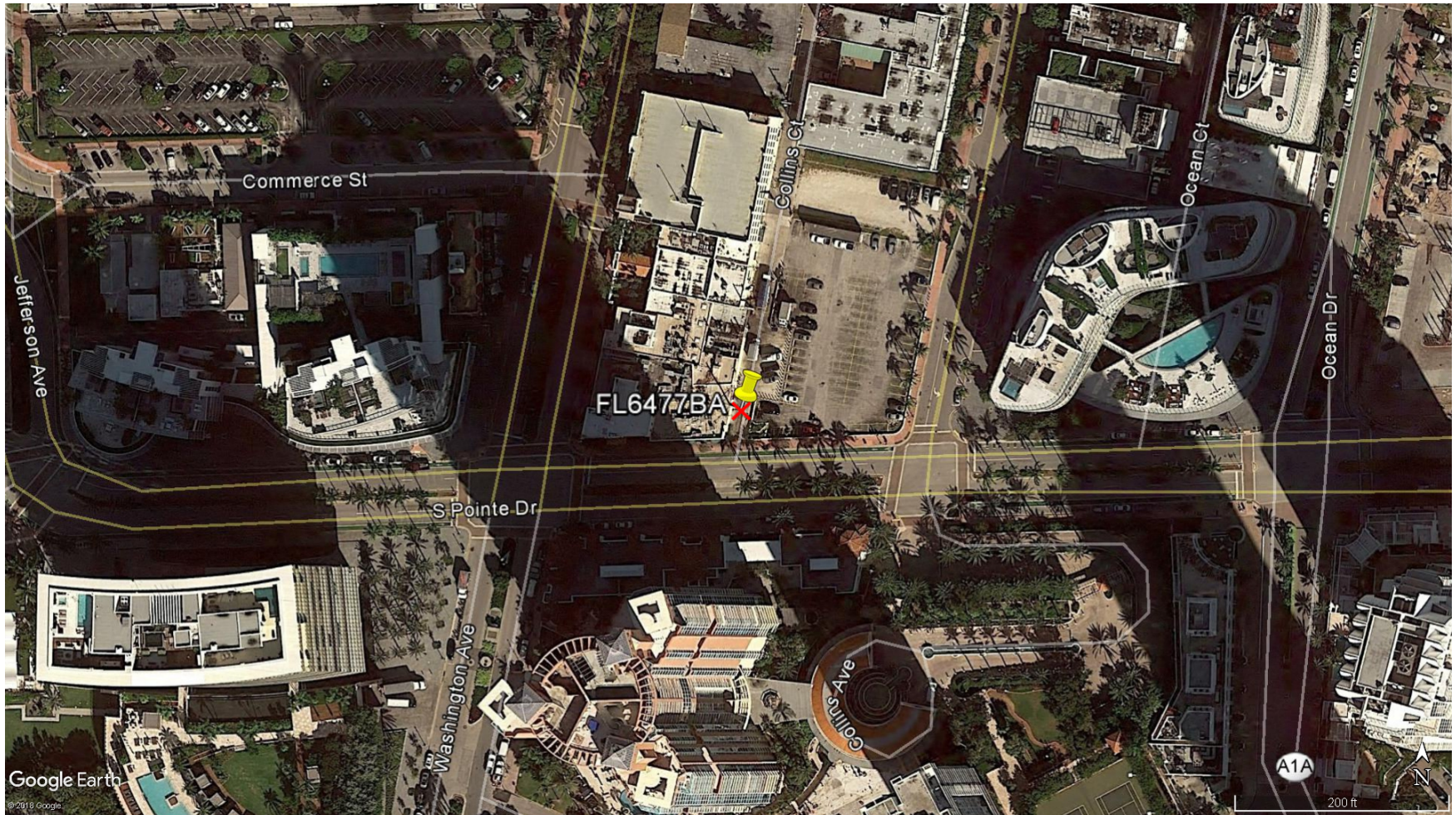


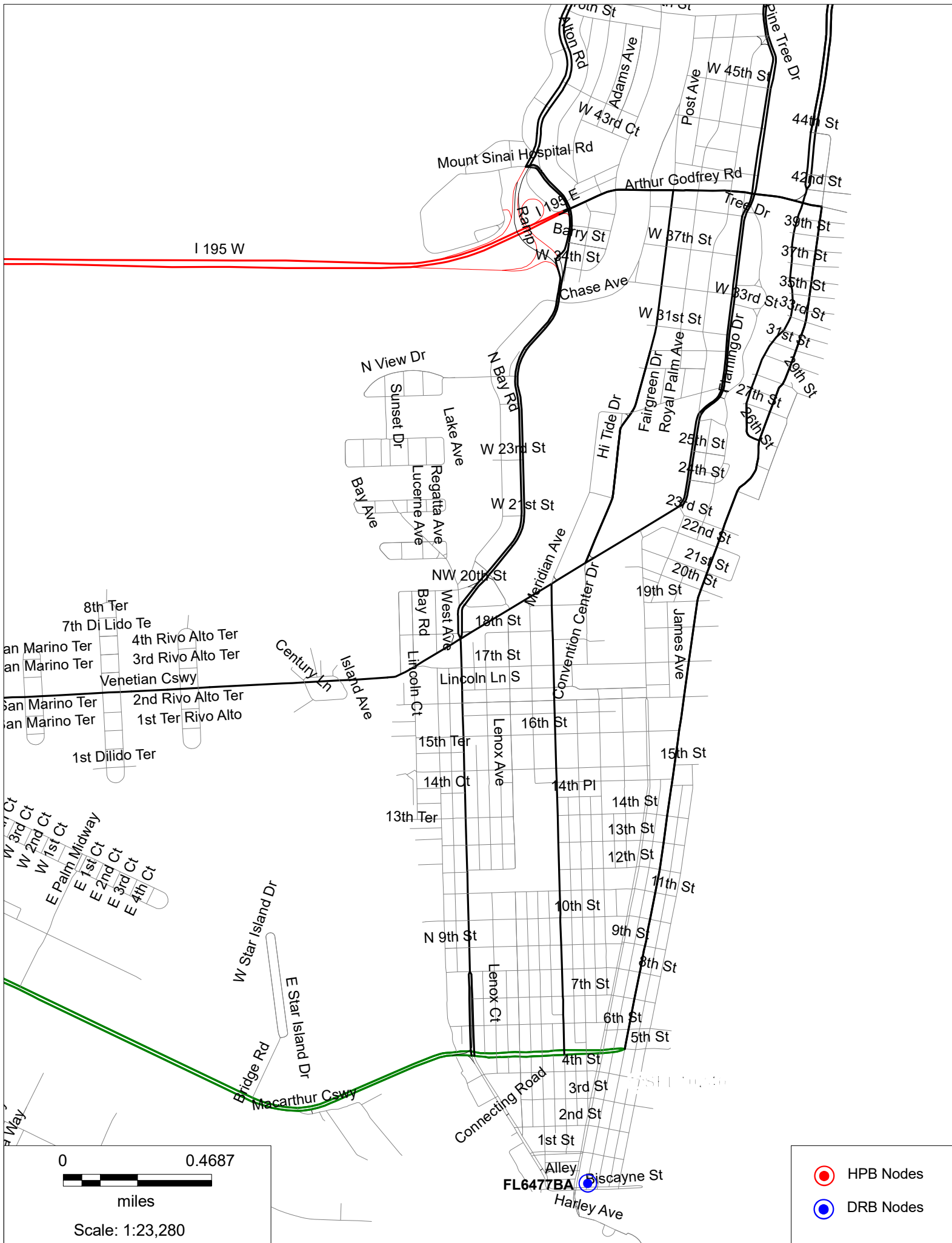
725.19

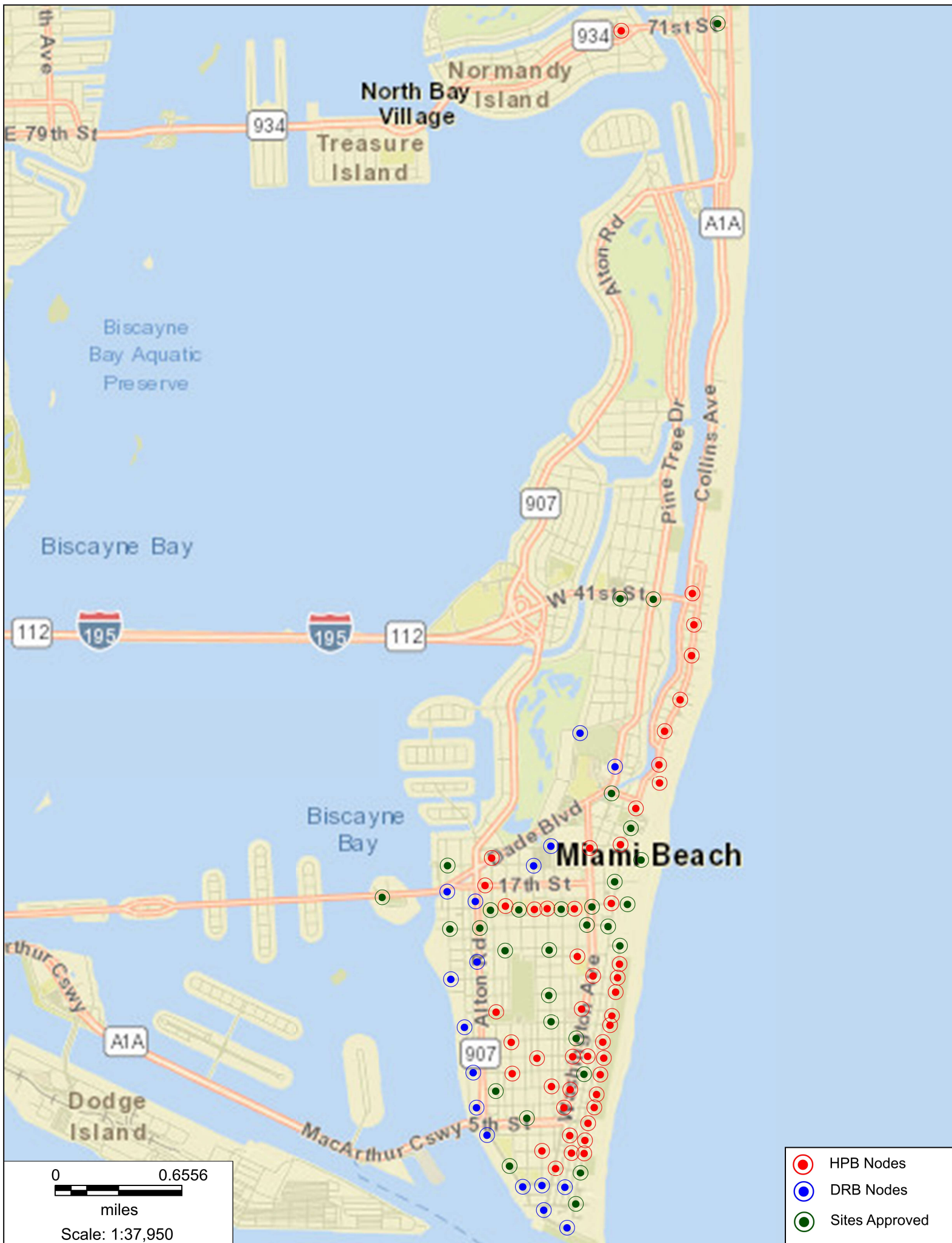
FL6477BA

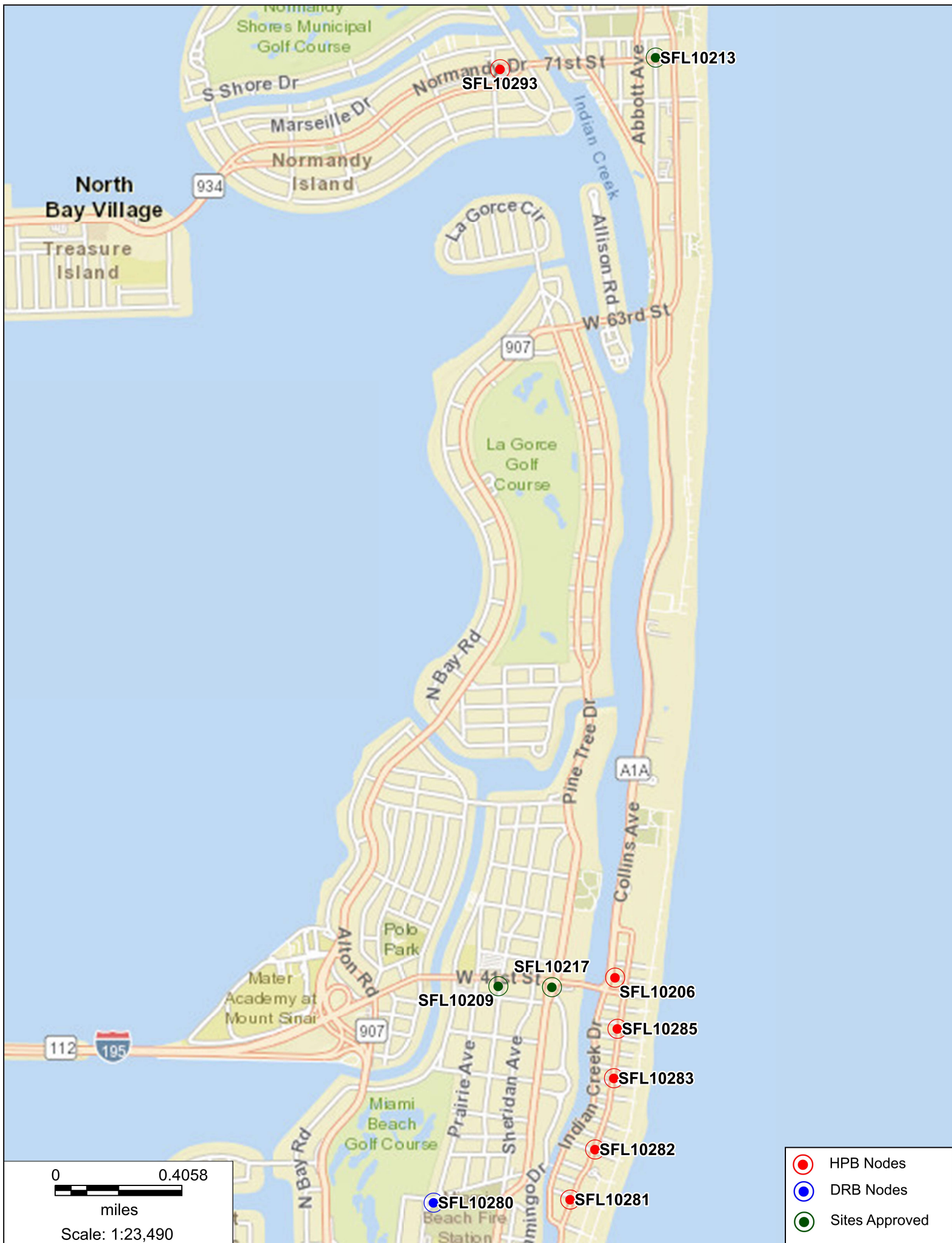
Aerial View

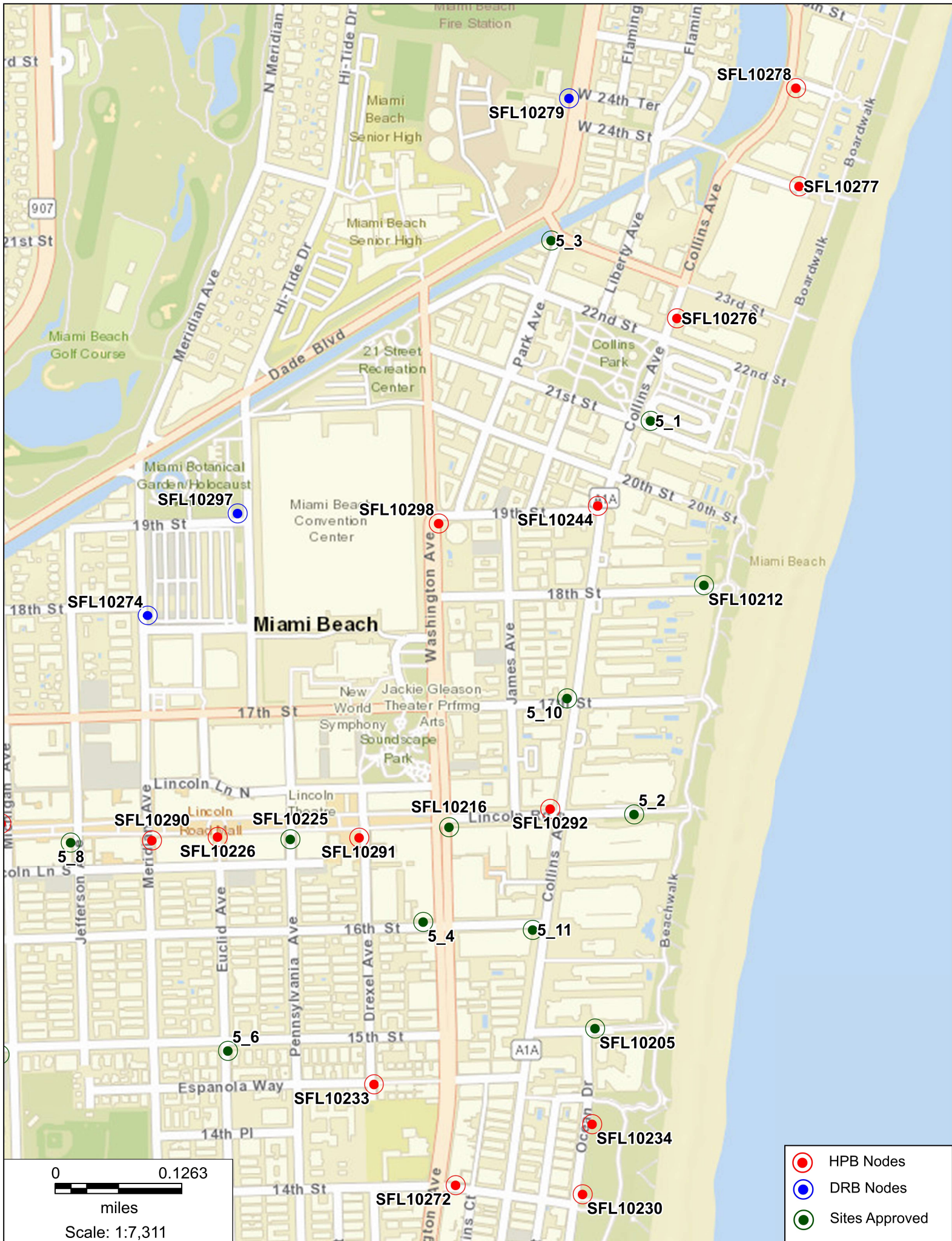
225 South Pointe Dr., Miami Beach, FL 33139















FL6477BA

225 South Pointe Dr., Miami Beach, FL 33139

Proposed Front view



FL6477BA

225 South Pointe Dr., Miami Beach, FL 33139

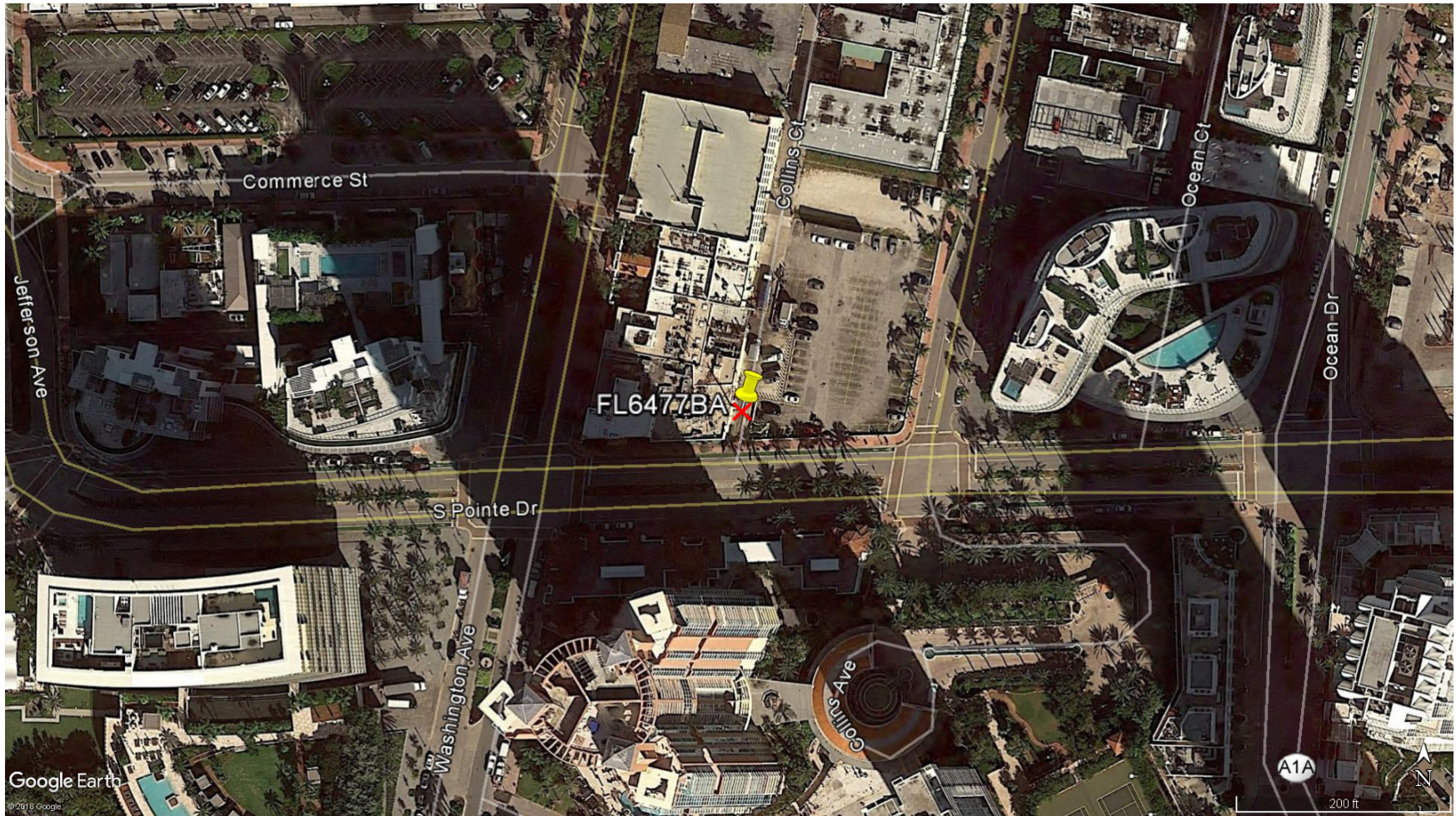
Proposed Side view



FL6477BA

Aerial View

225 South Pointe Dr., Miami Beach, FL 33139



FL6477BA

225 South Pointe Dr., Miami Beach, FL 33139

North



FL6477BA

East

225 South Pointe Dr., Miami Beach, FL 33139



FL6477BA

South

225 South Pointe Dr., Miami Beach, FL 33139



FL6477BA

225 South Pointe Dr., Miami Beach, FL 33139

West

