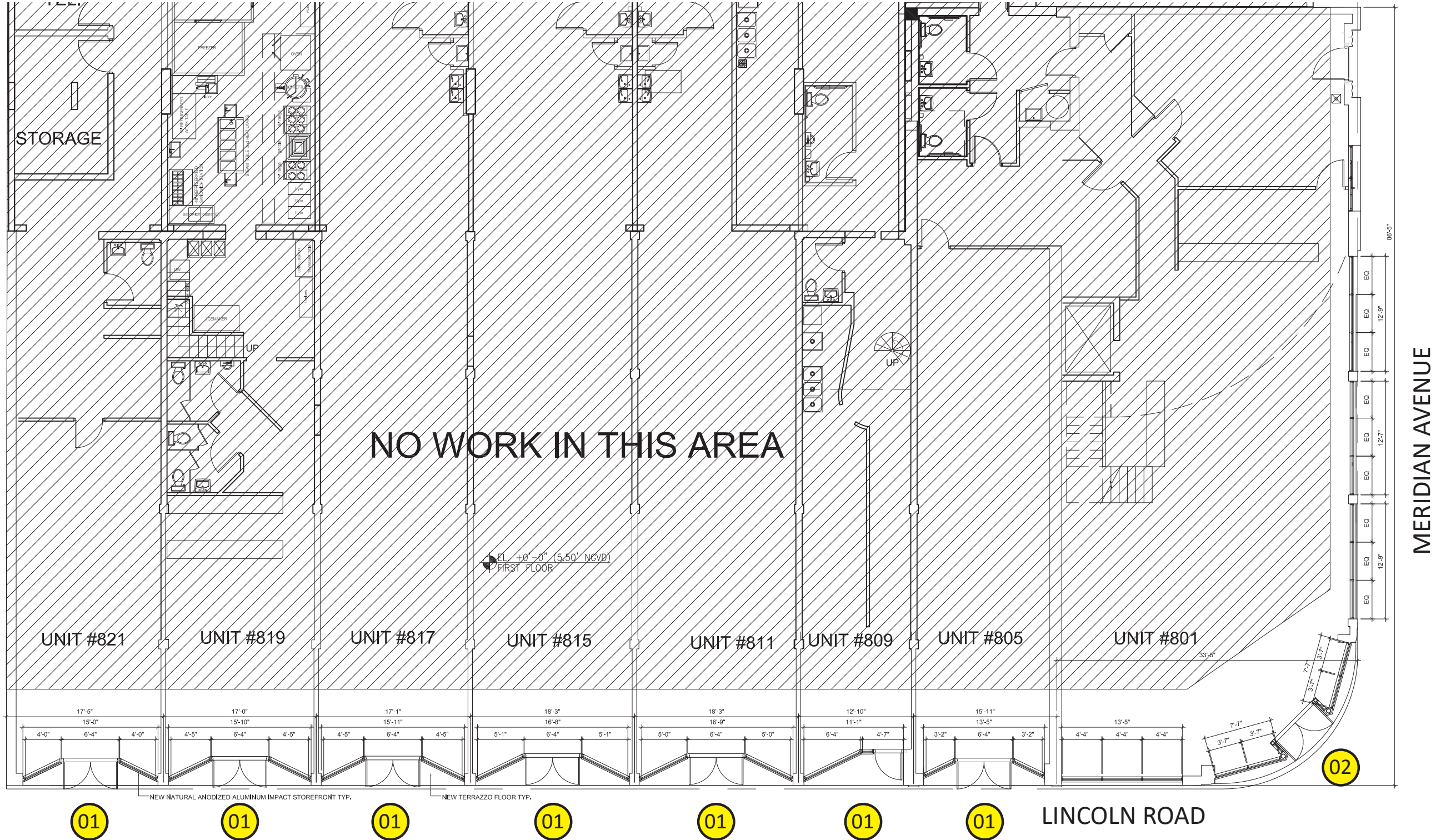


A-104 Proposed Lincoln Lane North Elevation (North): NO CHANGE

801 Lincoln Road, Miami Beach FL  
 Historic Preservation Board Final Submittal  
 File #19-0342  
 architecture / landscape architecture  
 2455 SW 27th Avenue, Suite 220, Miami, FL 33145 T: 305.310.2602

**MAK**  
work

#	SIGNAGE TABULATION						
	LOCATION	FRONTAGE	PROPOSED TYPE	TENANT #	ALLOWED	PROPOSED	DEFICIENCIES
Type 01	Lincoln Rd	12'-10" t0 18'-3"	wall	various	15 sf	15 sf	none
Type 02	Corner	111' (both sides)	wall	corner	83 sf	83 sf	none







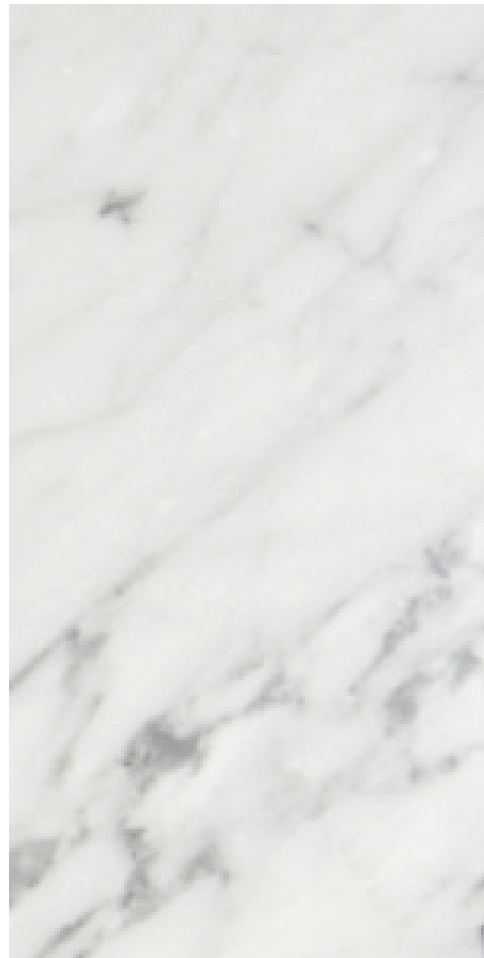
A-401 Rendering

801 Lincoln Road, Miami Beach FL  
 Historic Preservation Board Final Submittal  
 File #19-0342

architecture / landscape architecture  
 2455 SW 27th Avenue, Suite 220, Miami, FL 33145 T: 305.310.2602

**MAK**  
 work

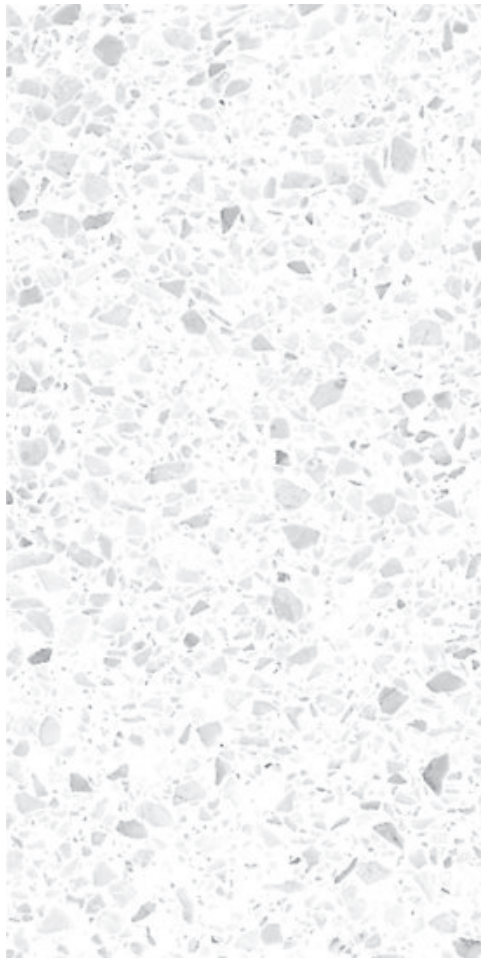




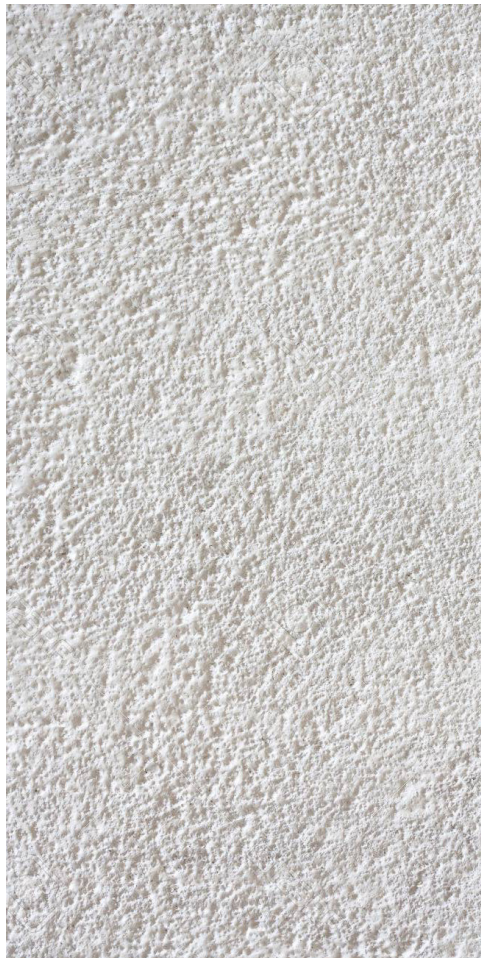
Carrera Marble  
- facade  
- curb



Natural Anodized Aluminum  
- cornice  
- window and door frames



Terrazzo  
- store entrance floors



Stucco, white  
- columns and header



Sunbrella fabric  
- awnings



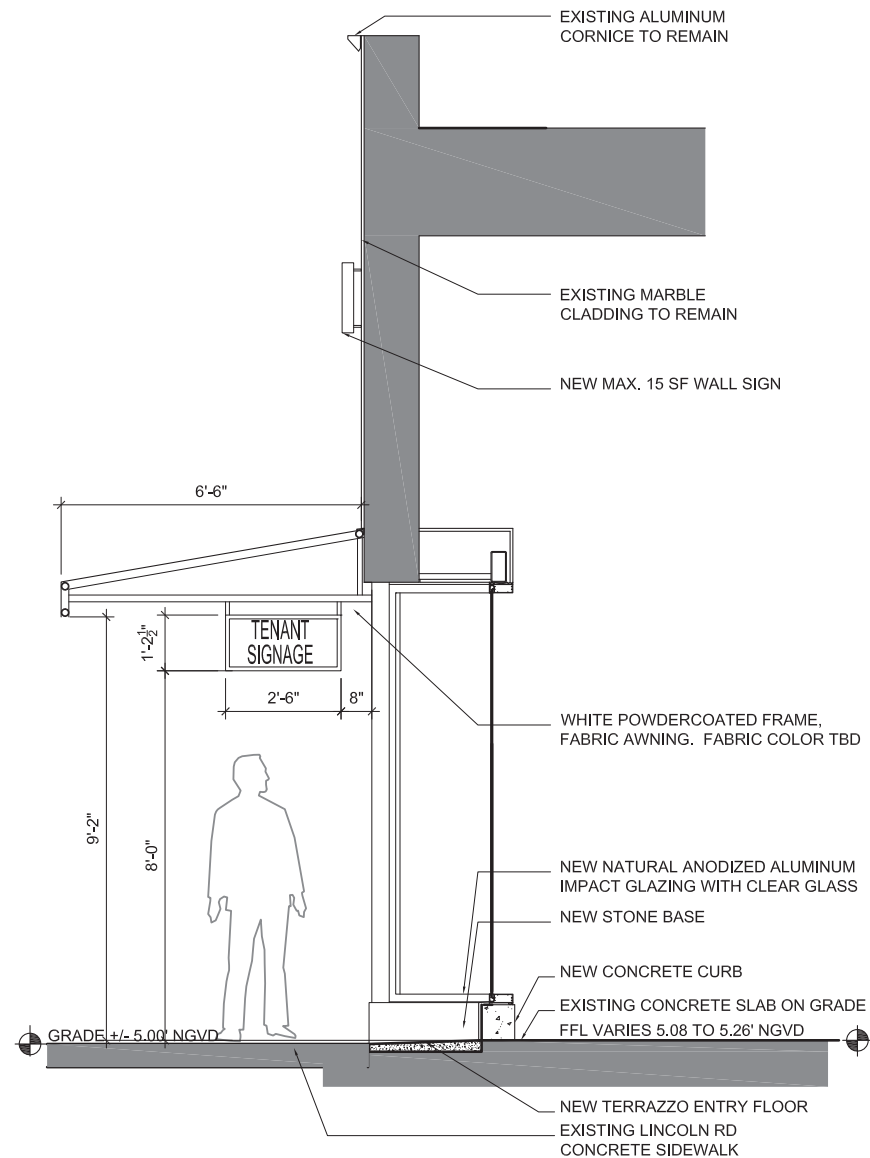
Black backlit pin supported stand-off  
channel letters for all wall signage

A-402 Materials Palette

801 Lincoln Road, Miami Beach FL  
Historic Preservation Board Final Submittal  
File #19-0342  
architecture / landscape architecture  
2455 SW 27th Avenue, Suite 220, Miami, FL 33145 T: 305.310.2602



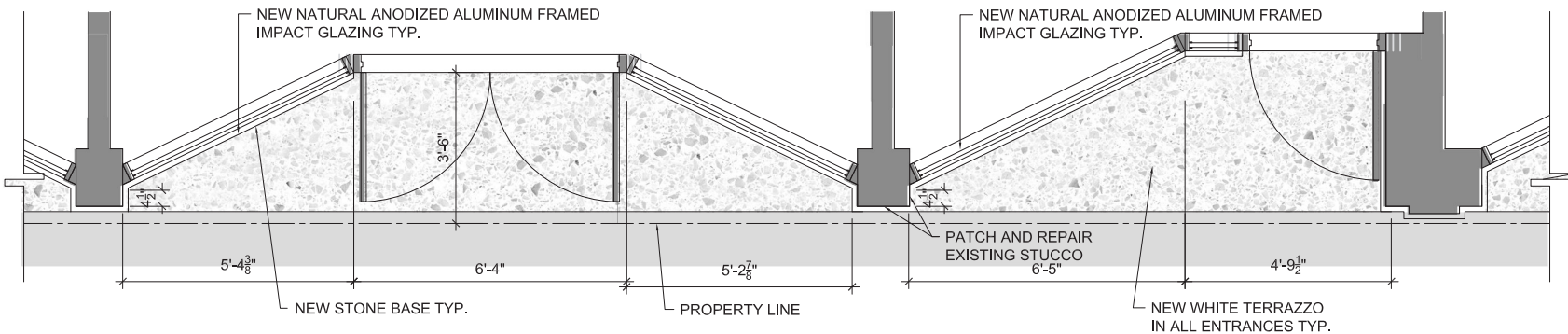




Lincoln Rd Facade Section



Lincoln Rd partial elevation

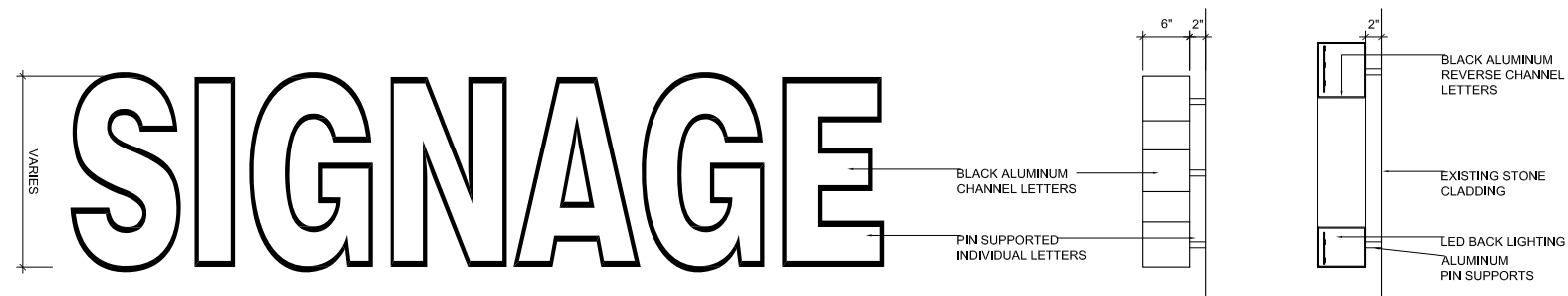


Lincoln Rd partial plan

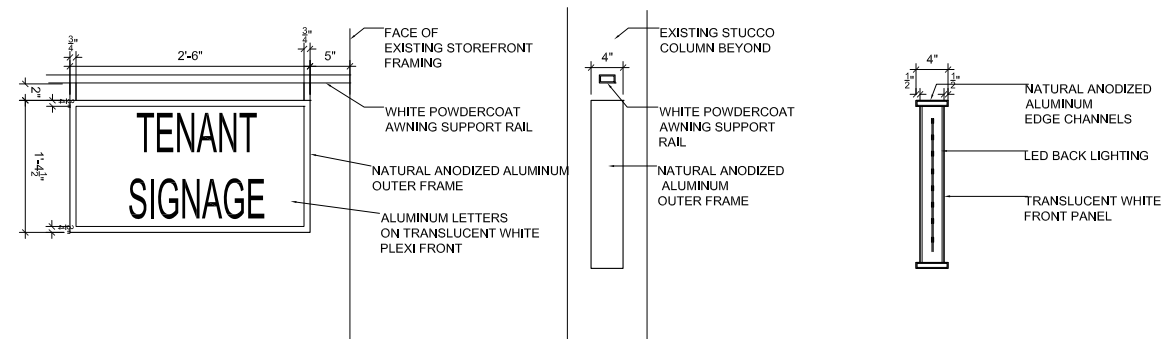
A-501 Enlarged storefront section, elevation and plan

801 Lincoln Road, Miami Beach FL  
 Historic Preservation Board Final Submittal  
 File #19-0342  
 architecture / landscape architecture  
 2455 SW 27th Avenue, Suite 220, Miami, FL 33145 T: 305.310.2602





Wall Sign, Typical, 1 per tenant



Under Awning sign, max. 3 sf