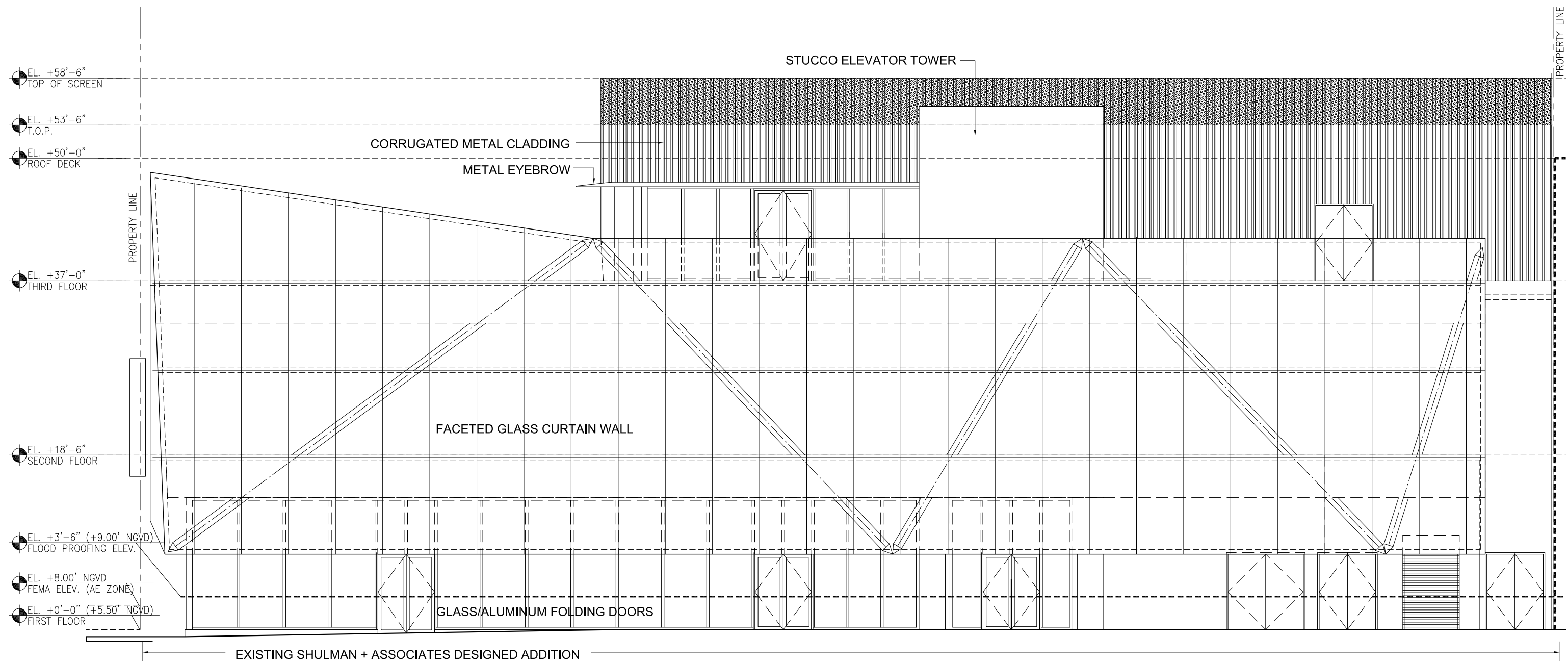


EX-103 Existing Meridian Avenue Elevation (east)

801 Lincoln Road, Miami Beach FL
 Historic Preservation Board Final Submittal
 File #19-0342
 architecture / landscape architecture
 2455 SW 27th Avenue, Suite 220, Miami, FL 33145 T: 305.310.2602

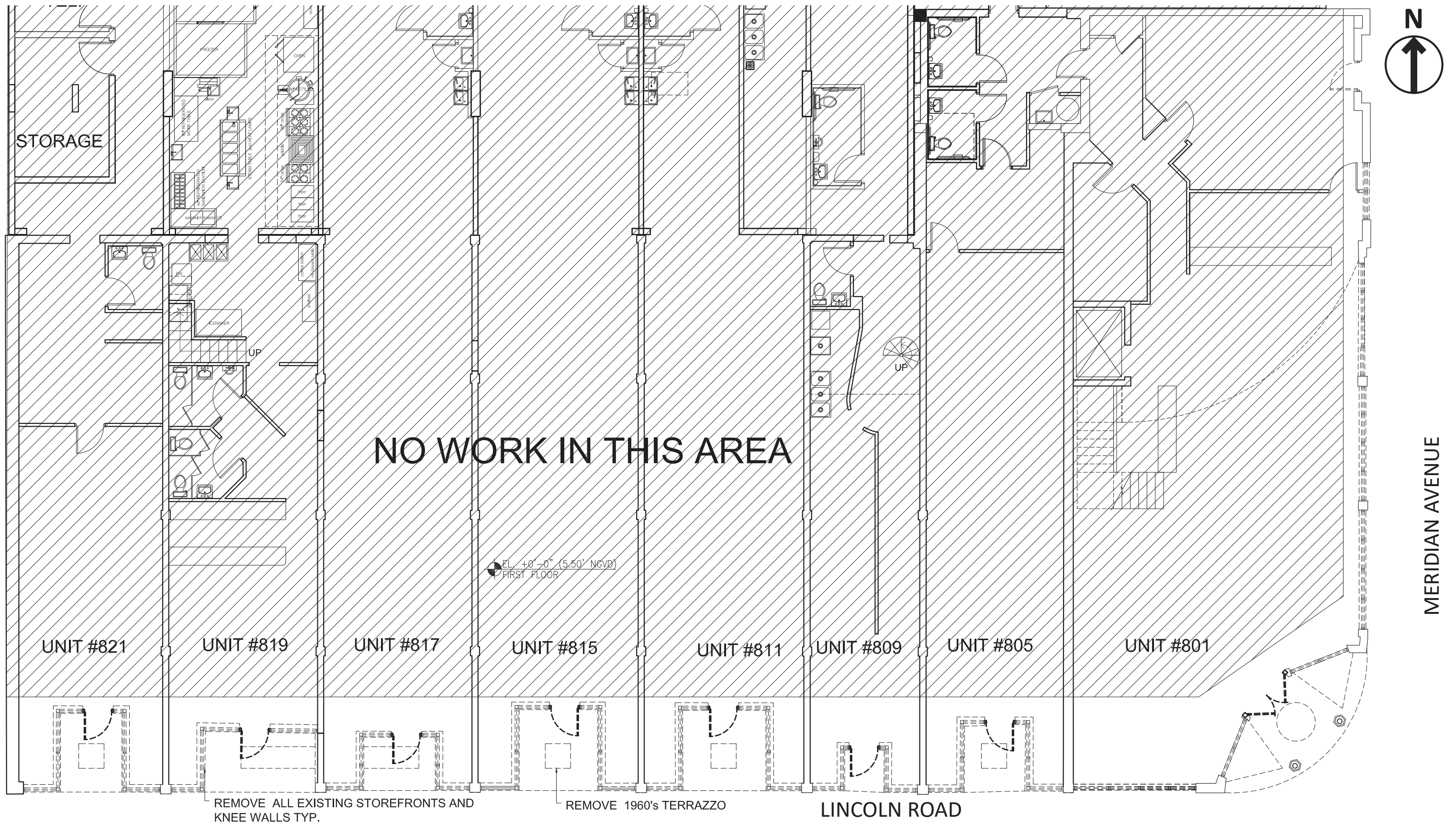
MAK
work



EX-104 Existing Lincoln Lane North Elevation (north)

801 Lincoln Road, Miami Beach FL
 Historic Preservation Board Final Submittal
 File #19-0342
 architecture / landscape architecture
 2455 SW 27th Avenue, Suite 220, Miami, FL 33145 T: 305.310.2602

MAK
work

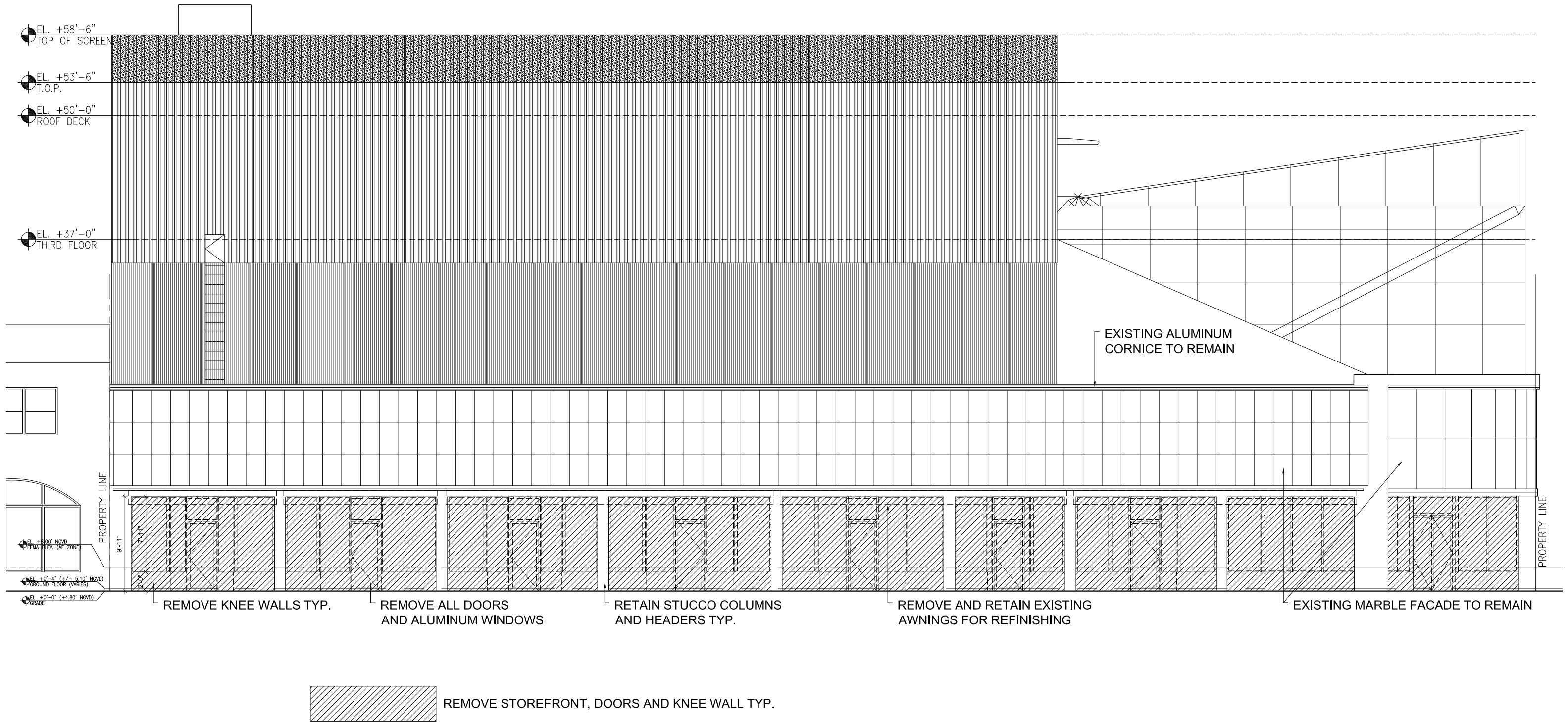


D-101 Demolition Plan

801 Lincoln Road, Miami Beach FL
Historic Preservation Board Final Submittal
File #19-0342

architecture / landscape architecture
2455 SW 27th Avenue, Suite 220, Miami, FL 33145 T: 305.310.2602

MAK
work

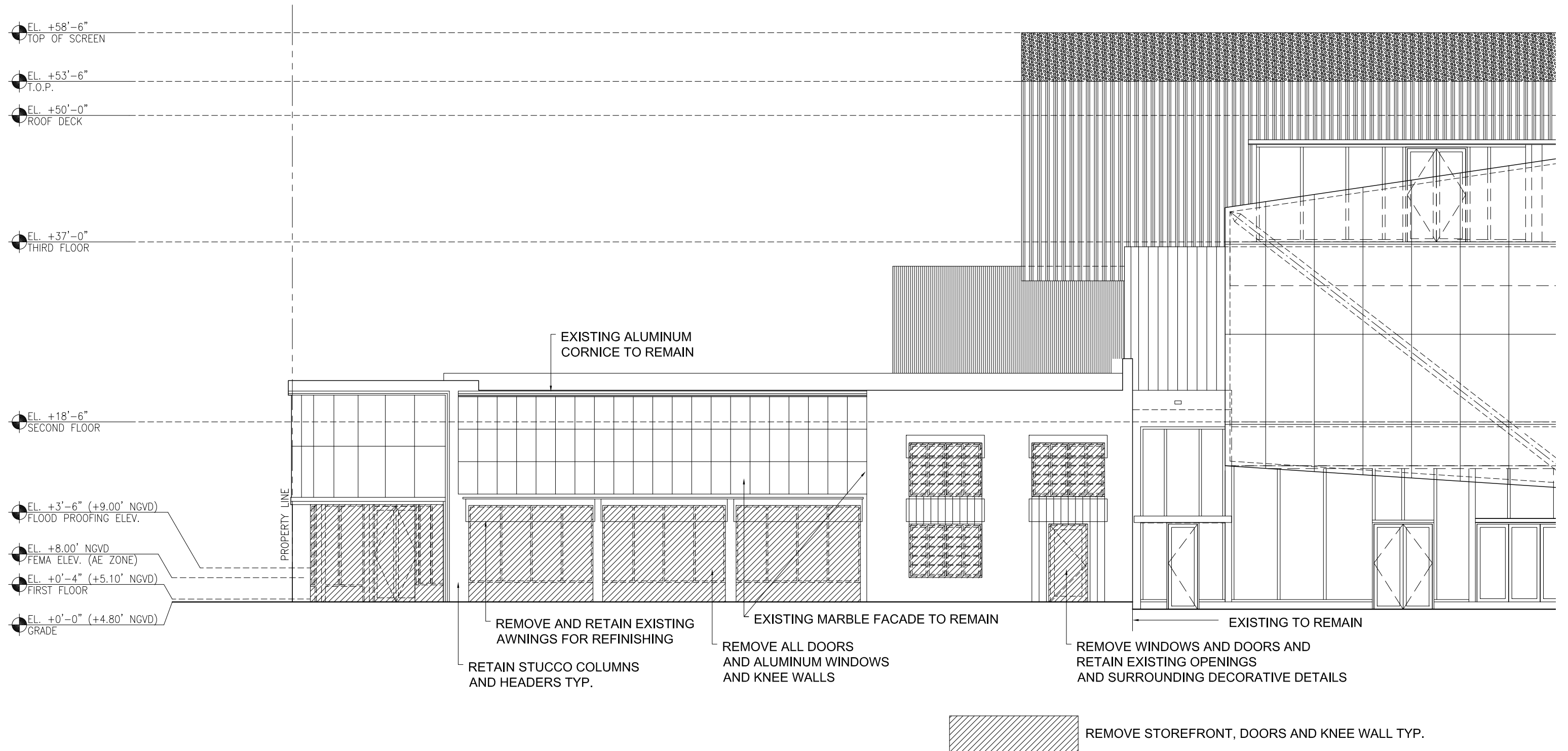


D-201 Demolition South Elevation

801 Lincoln Road, Miami Beach FL
Historic Preservation Board Final Submittal
File #19-0342

architecture / landscape architecture
2455 SW 27th Avenue, Suite 220, Miami, FL 33145 T: 305.310.2602

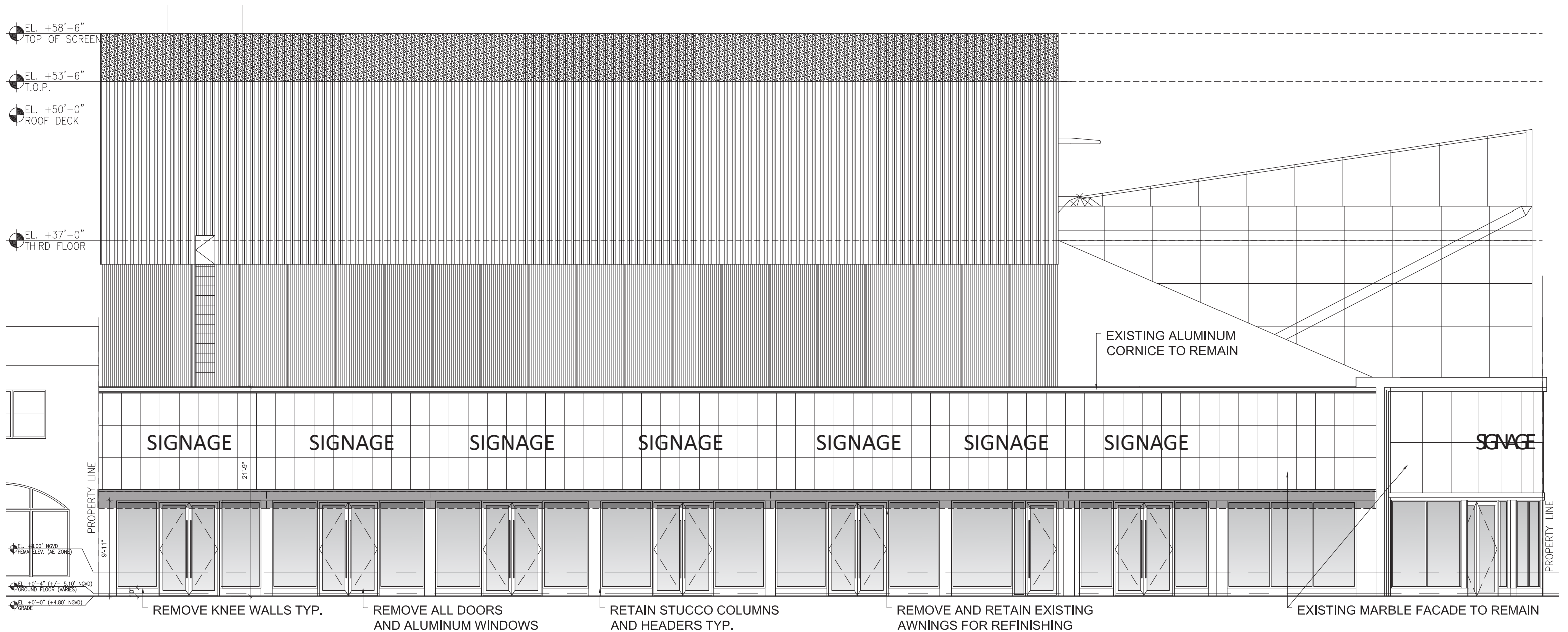
MAK
work



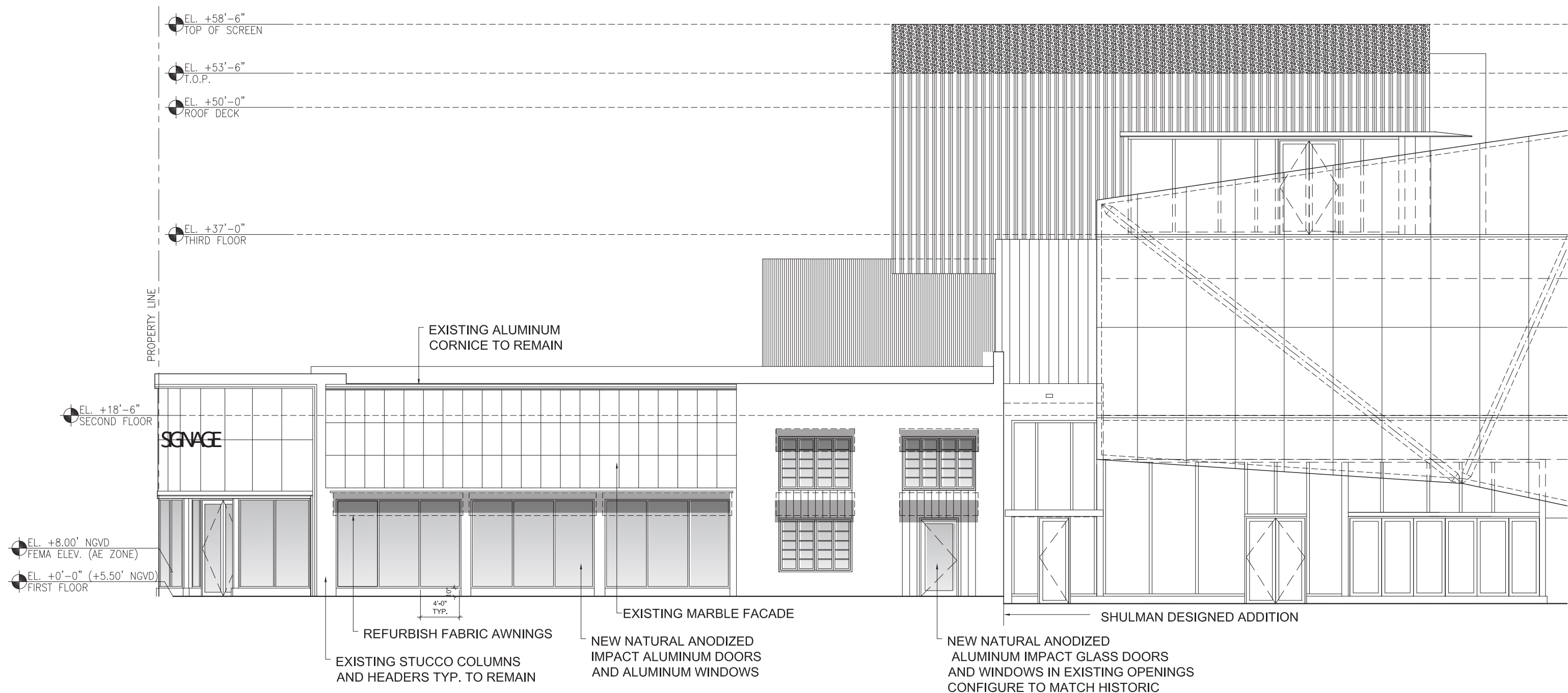
D-202 Demolition East Elevation

801 Lincoln Road, Miami Beach FL
 Historic Preservation Board Final Submittal
 File #19-0342
 architecture / landscape architecture
 2455 SW 27th Avenue, Suite 220, Miami, FL 33145 T: 305.310.2602

MAK
work



Proposed Lincoln Road Elevation



A-103 Proposed Meridian Avenue Elevation (east)

801 Lincoln Road, Miami Beach FL
 Historic Preservation Board Final Submittal
 File #19-0342
 architecture / landscape architecture
 2455 SW 27th Avenue, Suite 220, Miami, FL 33145 T: 305.310.2602

