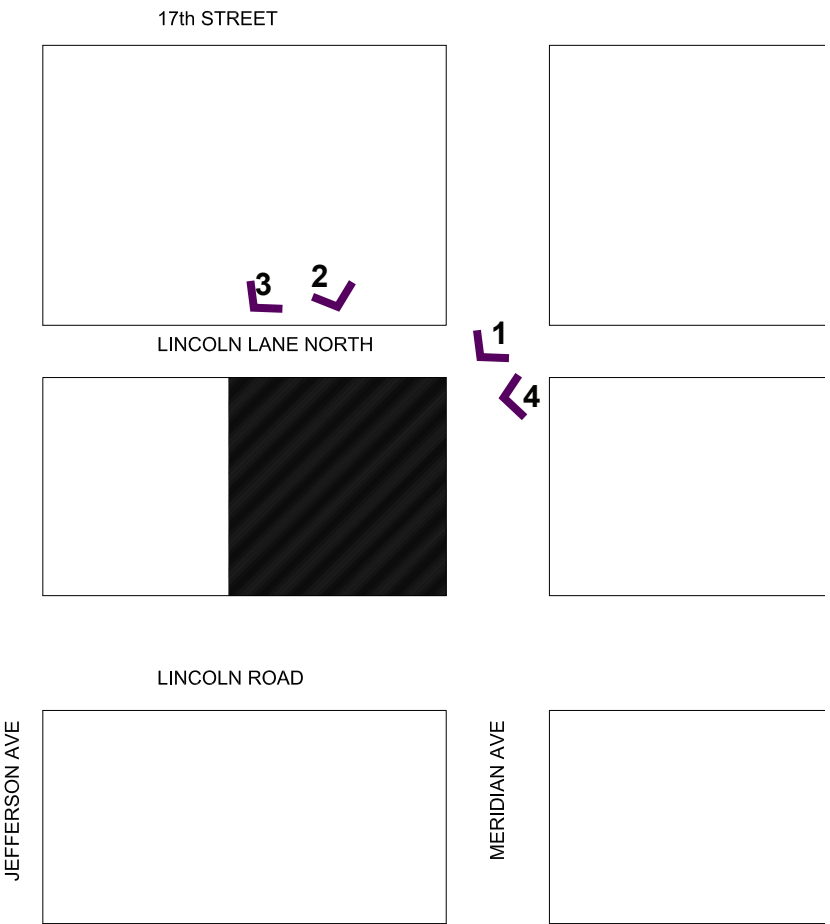


A-007 Existing Conditions Photographs

801 Lincoln Road, Miami Beach FL
 Historic Preservation Board Final Submittal
 File #19-0342
 architecture / landscape architecture
 2455 SW 27th Avenue, Suite 220, Miami, FL 33145 T: 305.310.2602

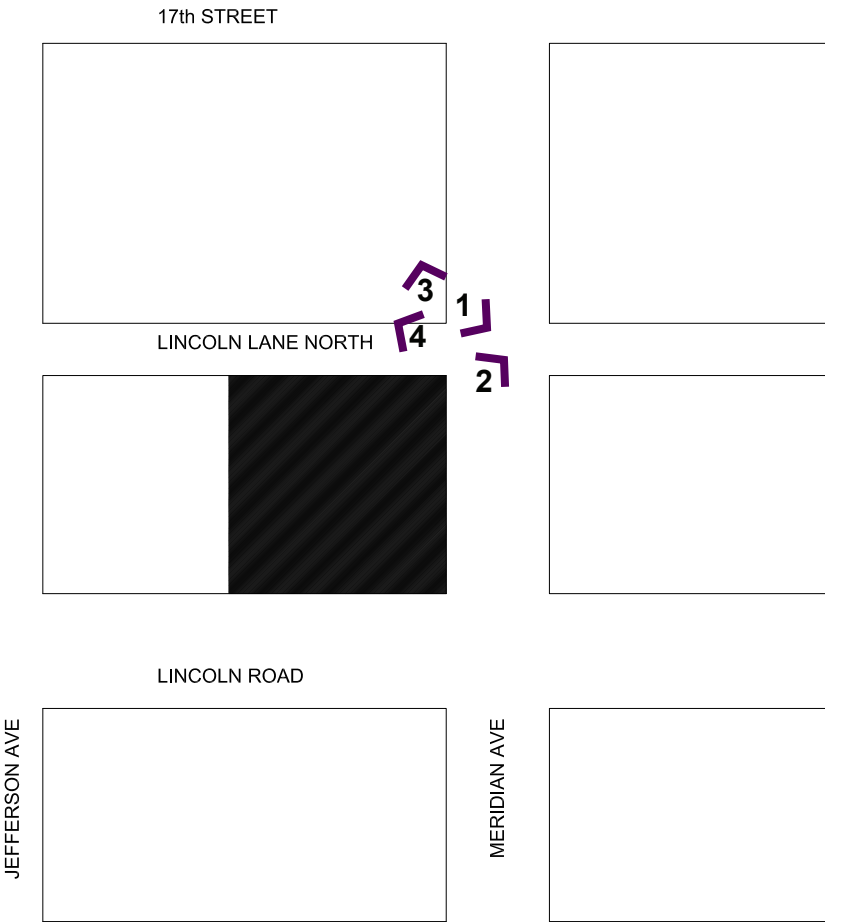




A-008 Existing Conditions Photographs

801 Lincoln Road, Miami Beach FL
 Historic Preservation Board Final Submittal
 File #19-0342
 architecture / landscape architecture
 2455 SW 27th Avenue, Suite 220, Miami, FL 33145 T: 305.310.2602

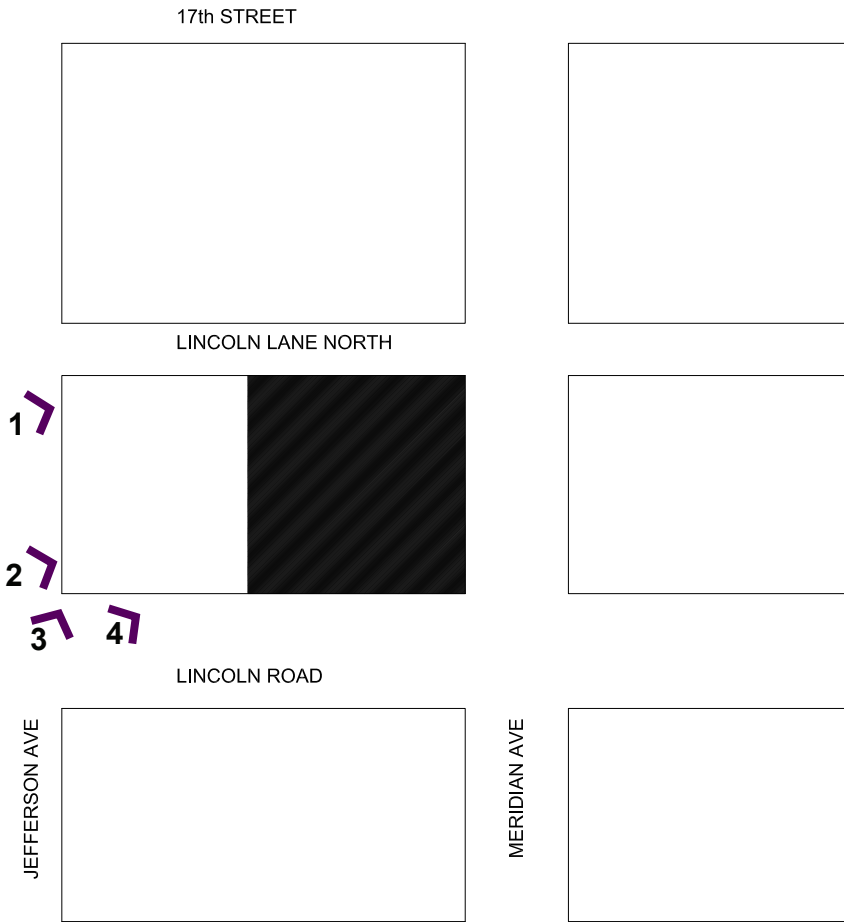




A-009 Context Photographs

801 Lincoln Road, Miami Beach FL
 Historic Preservation Board Final Submittal
 File #19-0342
 architecture / landscape architecture
 2455 SW 27th Avenue, Suite 220, Miami, FL 33145 T: 305.310.2602

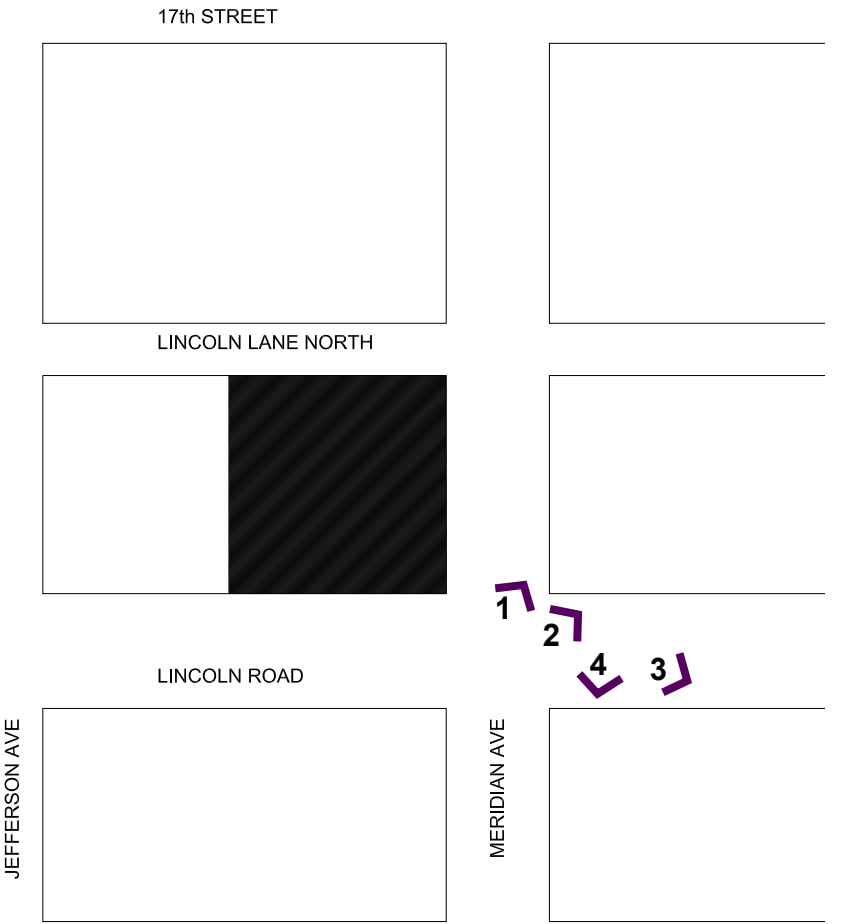




A-010 Context Photographs

801 Lincoln Road, Miami Beach FL
 Historic Preservation Board Final Submittal
 File #19-0342
 architecture / landscape architecture
 2455 SW 27th Avenue, Suite 220, Miami, FL 33145 T: 305.310.2602

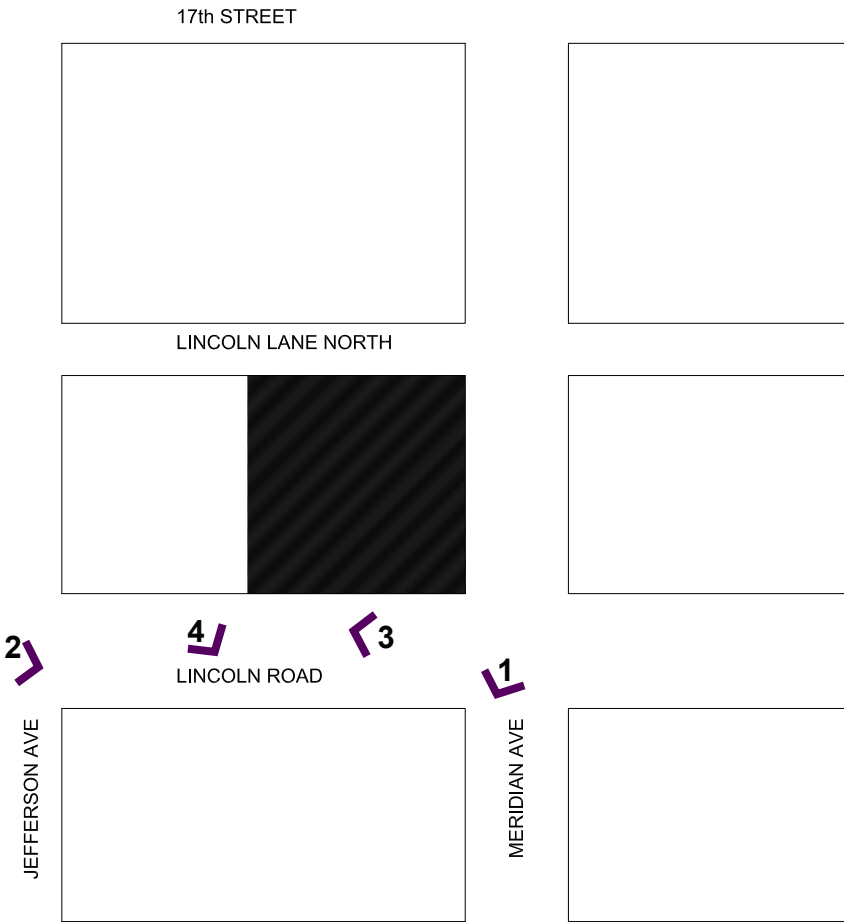




A-011 Context Photographs

801 Lincoln Road, Miami Beach FL
 Historic Preservation Board Final Submittal
 File #19-0342
 architecture / landscape architecture
 2455 SW 27th Avenue, Suite 220, Miami, FL 33145 T: 305.310.2602





A-012 Context Photographs

801 Lincoln Road, Miami Beach FL
 Historic Preservation Board Final Submittal
 File #19-0342
 architecture / landscape architecture
 2455 SW 27th Avenue, Suite 220, Miami, FL 33145 T: 305.310.2602



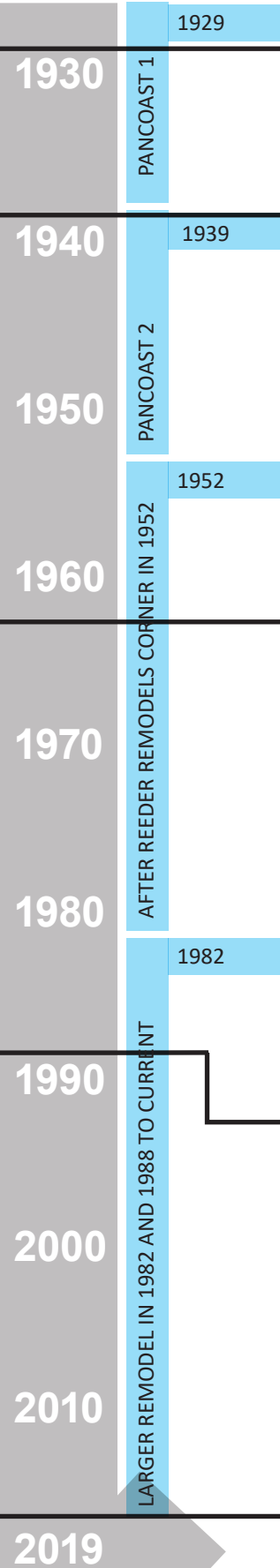
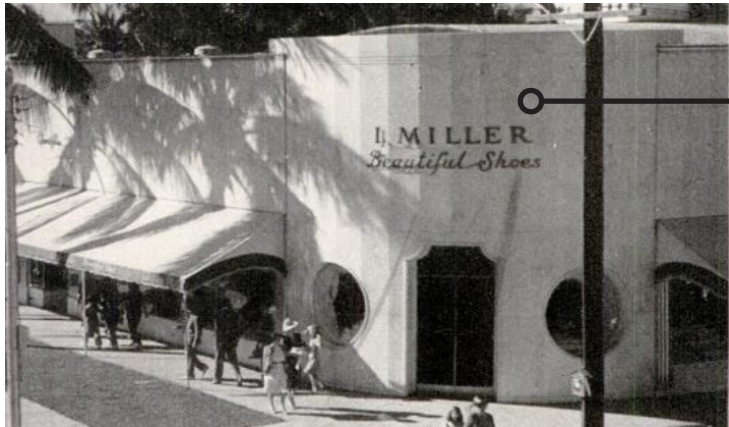
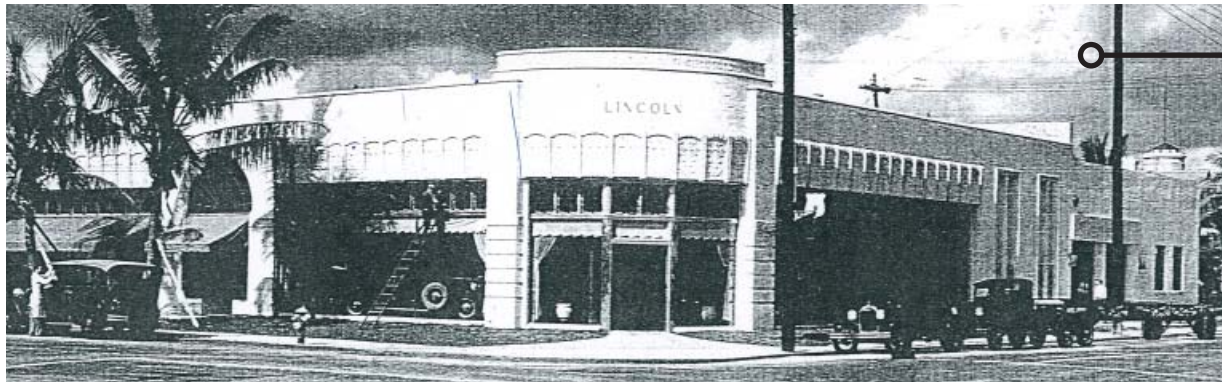


Photo taken 1930
1929 Original Construction: 6" sill, large plate glass with transom.
Architect: Russell Pancoast

Photo taken 1941
1939 (#13306) Complete facade replacement. (Microfilm available)
Corner architecture with small windows and knee walls on Lincoln Rd.
Architect: Russell Pancoast

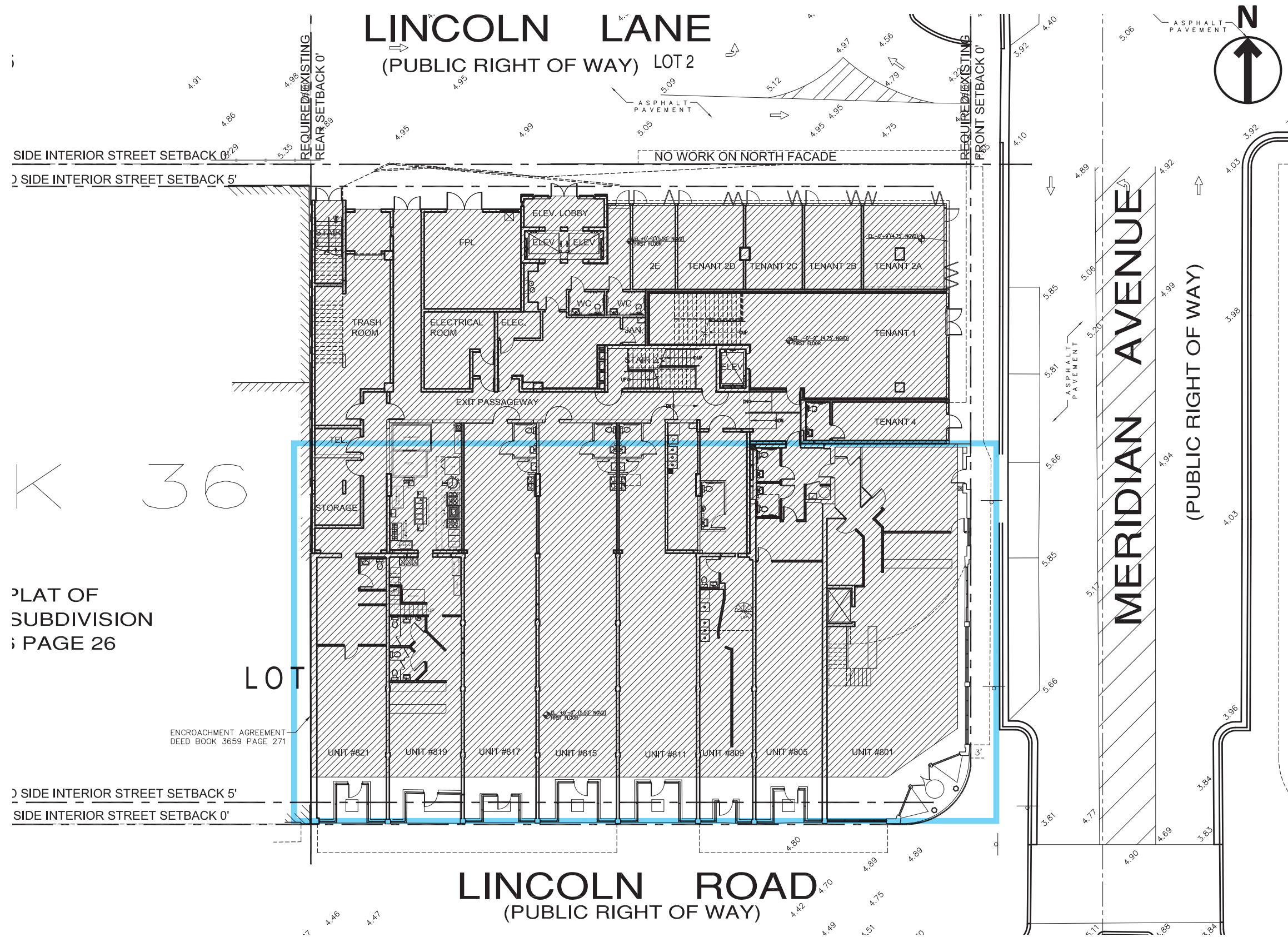
Photo taken 1962 (no decorative tile on knee wall)
1949 (#30831) storefront modifications (address unknown)
1949 (#31233) create two stores and remodel front (address unknown)
1950 (#33593) 821 storefront remodeling by E.T. Reeder
1952 (#39029) 801 storefront remodeling by E.T. Reeder
1954 (#44863) 'Prom Shop' storefront remodeling
1958 (#57763) 811 'Change storefront by lowering bulkhead'
1962 (#64954) 817-819 'Remodel 2 stores into 1' (terrazzo reflects this)
1962 (#67954) 821 'remodel entry to store'

1971 (#87697) 815 'replace front door'
1976 (#09223) 'replace doors' by Twin City Glass (address unknown)
1982 (#22606) 'replace glass 14 windows & 2 doors' (address unknown)

Photo taken circa 1989 (decorative tile on knee wall)
805 (#B8801122) 'restaurant remodelling' Pietro's C.O. 1988

area of enlarged plans

EX-101 Existing Building Plan



801 Lincoln Road, Miami Beach FL
Historic Preservation Board Final Submittal
File #19-0342
architecture / landscape architecture
2455 SW 27th Avenue, Suite 220, Miami, FL 33145 T: 305.310.2602



