

REVISIONS			
REV.	DESCRIPTION	BY	DATE
A			

38'6"
AGL

Ø 15

CANISTER ANTENNA
(PROVIDED BY OTHERS)

5G ANTENNA/RRU SECTION

ACTIVE RAN EQUIPMENT

30'6"

ACTIVE RAN EQUIPMENT

Ø 16.0

OPTIONAL
LUMINAIRE ARM MOUNTING

19'0"

ACTIVE RAN EQUIPMENT

ACTIVE RAN EQUIPMENT

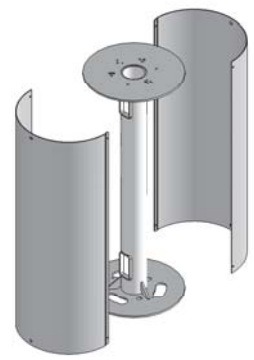
8'0"

POWER SECTION
AC LOAD CENTER
POWER METER
OPTIONAL AC-DC RECTIFIER

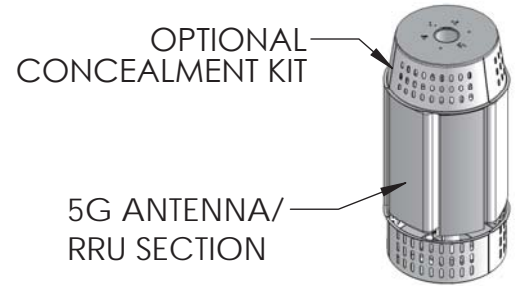
5'0"

Ø 14.0

.0



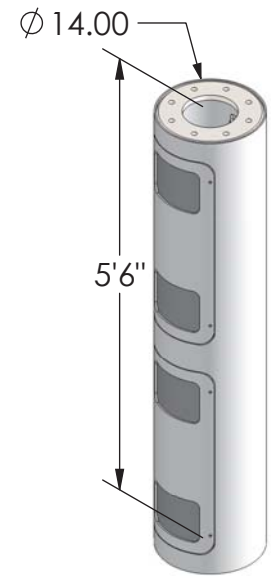
5G ANTENNA SECTION



OPTIONAL
CONCEALMENT KIT

5G ANTENNA/
RRU SECTION

5G ANTENNA SECTION



ACTIVE EQUIPMENT SECTION

These drawings and specifications are the proprietary property of CommScope Inc. and may be used only for the specific purpose authorized in writing by CommScope Inc.

DRAWN BY: MJP	SHEET:	PART NUMBER:
CHECKED BY:	SCALE:	DESCRIPTION:
DATE:	MATERIAL:	DRAWING TYPE:
REVISION: A	FINISH:	
	WEIGHT:	

ALL DIMENSIONS ARE IN INCHES U.O.S.
TOLERANCES UNLESS OTHERWISE SPECIFIED:
.X = ± .12 ANGLES ±2°
.XX = ± .06 FRACTIONS ±1/32
.XXX = ± .031

REMOVE BURRS AND BREAK EDGES .005

DO NOT SCALE THIS PRINT

D
C
B
A

D
C
B
A

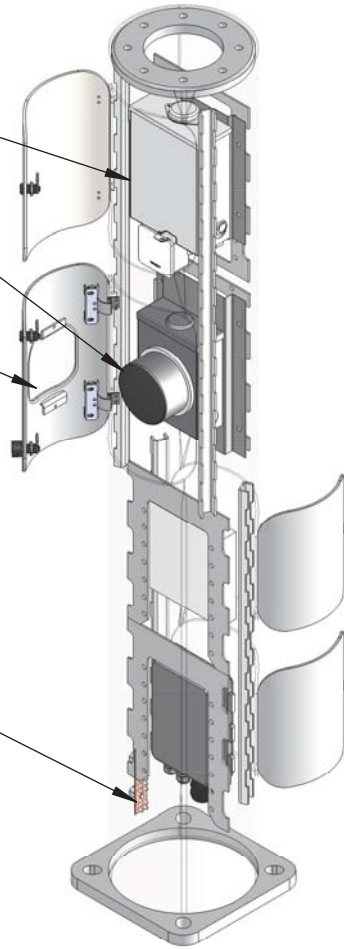
D

AC LOAD CENTER

POWER METER

TRANSPARENT WINDOW

GROUND BAR



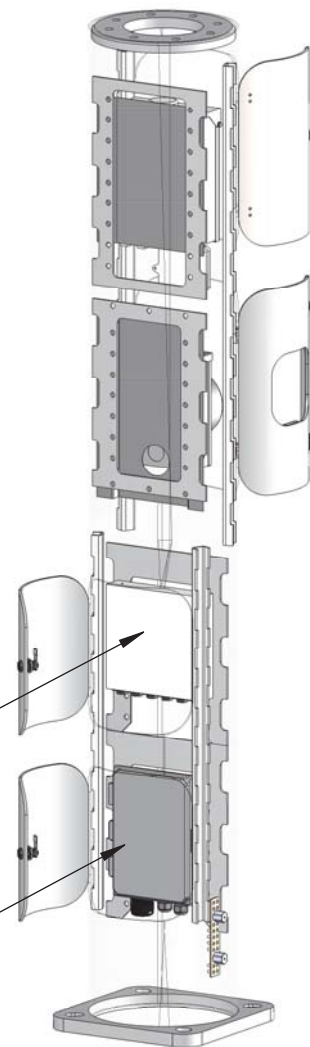
C

B

A

FIBER UNIT

FIBER MANAGEMENT UNIT



D

C

B

A

These drawings and specifications are the proprietary property of CommScope Inc. and may be used only for the specific purpose authorized in writing by CommScope Inc.

DRAWN BY:

MJP

SHEET:

PART NUMBER:

CHECKED BY:

SCALE:

DESCRIPTION:

DATE:

MATERIAL:

DRAWING TYPE:

REVISION:

A

FINISH:

WEIGHT:

ALL DIMENSIONS ARE IN INCHES U.O.S.
TOLERANCES UNLESS OTHERWISE SPECIFIED:

.X = ±	.12	ANGLES	±2°
.XX = ±	.06	FRACTIONS	±1/32
.XXX = ±	.031		

REMOVE BURRS AND BREAK EDGES .005

DO NOT SCALE THIS PRINT

4

1

3

↑

2

1

1



C241-GR484

Dark Gray Fine Texture Semi-Gloss



C241-GR07

Gray Fine Texture Semi-Gloss



C241-GR305

Bay Gray Fine Texture Semi-Gloss



T243-GR522

Flint Gray Fine Texture Semi-Gloss



T241-GR11

Platinum Gray Fine Texture Semi-Gloss



T031-WH06

Pearl White Fine Texture Semi-Gloss



T243-GR301

Quartz Gray Fine Texture Semi-Gloss



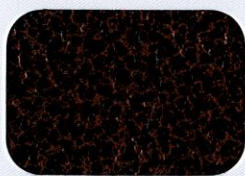
T241-GR142

Light Gray Fine Texture Semi-Gloss



T241-BG137

Beige Fine Texture Semi-Gloss



T375-BK07

Copper Vein Semi-Gloss*



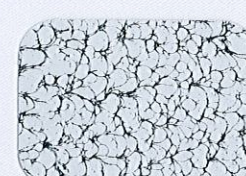
T375-BK10

Gold Vein Semi-Gloss*



T375-BK26

Silver Vein Semi-Gloss*



T075-WH34

Black/White Vein Semi-Gloss



T064-BR24

Bronze Hammertone Semi-Gloss



T064-GR660

Gray Hammertone Semi-Gloss



T064-GR05

Silver Hammertone Semi-Gloss



T064-BL95

Blue Hammertone Semi-Gloss



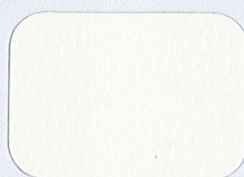
T064-GN81

Green Hammertone Semi-Gloss



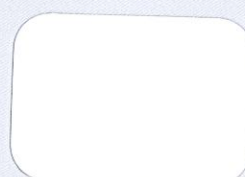
C013-GR08

Gray Hammer Semi-Gloss



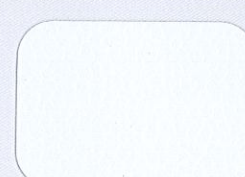
T013-BG38

Beige Hammer Semi-Gloss



T012-WH260

White Hammer Semi-Gloss



T013-WH09

White Hammer Semi-Gloss



T025-BR01

Bronze Pearlescent 50% Gloss



T028-GR02

Steel Gray Pearlescent 80% Gloss



T353-YL02

Brass 30% Gloss*



T357-GR105

Silver Metallic 70% Gloss*



T353-GR06

Silver Metallic 30% Gloss*



T358-GR539

Chrome 80% Gloss*



T391-BG290

Metallic Bronze Semi-Gloss Texture*



T091-GR309

Mock Rock Texture Semi-Gloss



C291-GN20

Patina Texture Semi-Gloss



T091-GN57

Verdigris Texture Semi-Gloss

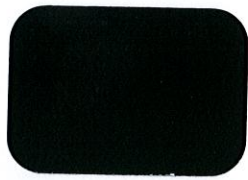


T091-BR47

Rust Texture Semi-Gloss

Computer Colors

Specialty Coatings



C241-BK303
Black Fine Texture Low-Gloss



C081-BK176
Black Wrinkle Semi-Gloss



E311-BK04
Black Hammer Low-Gloss**



T013-BK62
Black Hammer Semi-Gloss



T032-BR62
Brown Fine Texture Semi-Gloss



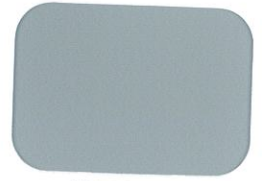
P004-BR23
Bronze 40% Gloss



P004-GR09
ANSI #49 Gray 40% Gloss



P004-GR16
ANSI #61 Gray 40% Gloss



H305-GR10
Light Gunmetal Gray 50% Gloss**



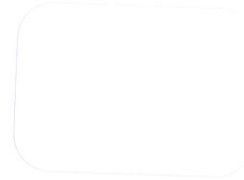
P003-GR01
Gray #26307 30% Gloss



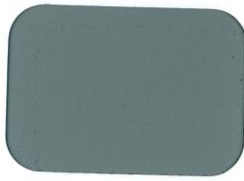
H303-WH16
Antique White 30% Gloss**



P005-WH01
White #27875 50% Gloss



T002-WH08
White 20% Gloss



T008-GR736
Gray ANSI 61 80% Gloss



P008-GR21
RAL 7042 Gray 80% Gloss



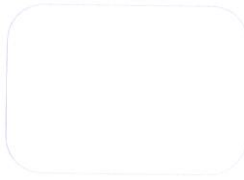
T009-GR230
RAL 7035 Gray 90% Gloss



T009-WH13
White 90% Gloss



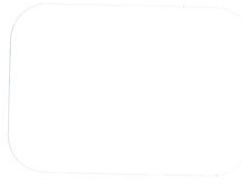
P009-WH14
White 90% Gloss



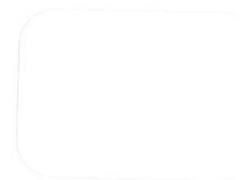
H309-WH27
Frost White 90% Gloss**



T032-BG03
Beige Texture Semi-Gloss



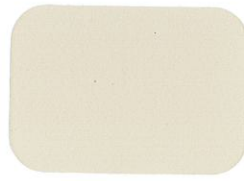
T032-WH15
White Texture Semi-Gloss



C031-WH120
White Texture Semi-Gloss



T009-BG16
Designer Beige 90% Gloss



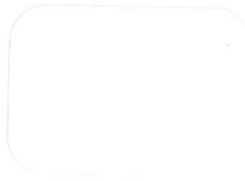
P009-BG02
Beige 90% Gloss



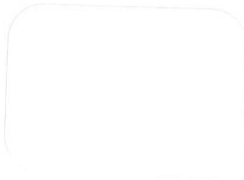
T009-BG01
Almond 90% Gloss



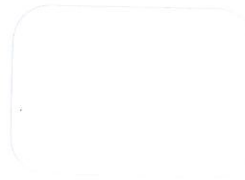
H308-WH25
White 80% Gloss**



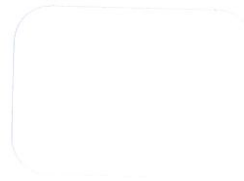
P009-WH04
White 90% Gloss



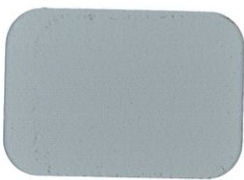
T009-WH11
White 90% Gloss



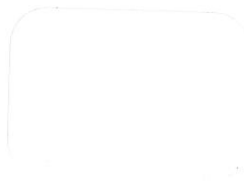
T009-WH12
Hi-Reflective White 90% Gloss



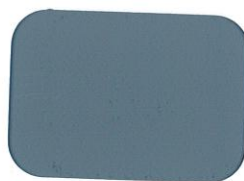
T007-WH121
White 70% Gloss



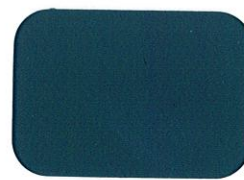
E305-GR533
Gray Primer 50% Gloss**



E305-WH243
White Primer 50% Gloss**



H304-GR312
Anti-Gassing Primer 40% Gloss**



E396-GR1372
Zinc Rich Primer

If a clear topcoat finish is preferred
T209-CL01 90% Gloss Clear TGIC Polyester
T002-CL02 20% Gloss Clear TGIC Polyester

The samples on this card are representative only and vary slightly from actual gloss, color and texture.