

LEGEND	
	EXISTING CATCH BASIN
	EXISTING DRAINAGE MANHOLE
	EXISTING FIRE HYDRANT
	EXISTING LANDSCAPE AREA
	EXISTING ELECTRIC MANHOLE
	EXISTING SIGN
	EXISTING STREET LIGHT
	EXISTING TRAFFIC HANDHOLE
	EXISTING WATER VALVE
	EXISTING PALM TREE

CROWN CASTLE  
SMALL WIRELESS FACILITIES  
DRB 19-0433 (FL 6443)  
651 West Ave.

PROPOSED SITE PLAN

JULY 25, 2019  
N.T.S.

R.J. HEISENBOTTLE ARCHITECTS, P.A.  
2199 PONCE DE LEON BLV, CORAL GABLES, FLORIDA 33134  
PHONE: 305.446.7799 / FAX: 305.446.9275  
FLORIDA REGISTRATION NUMBER: AR 0010865



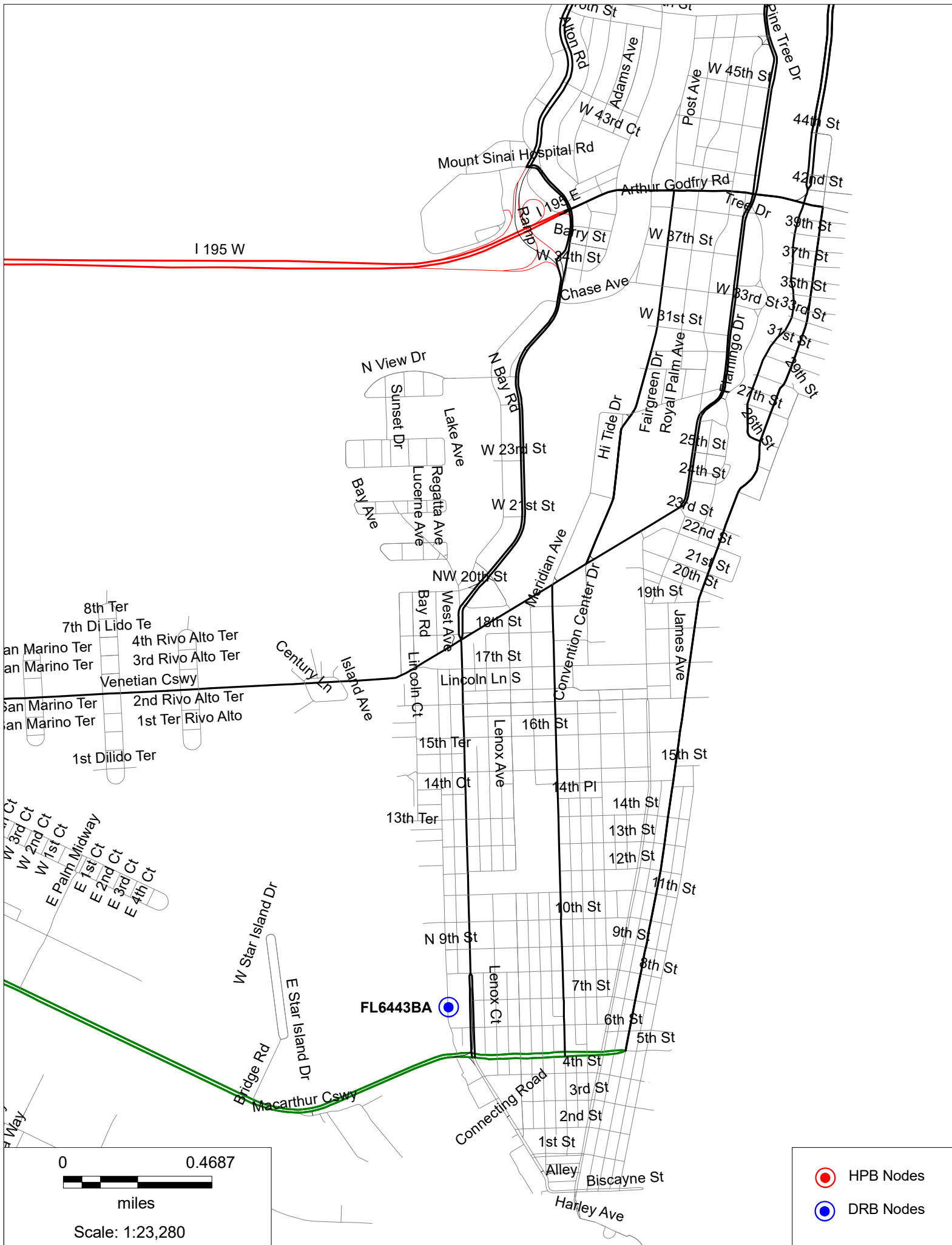


FL6443BA

Aerial View

651 West Ave, Miami Beach, FL, 33139













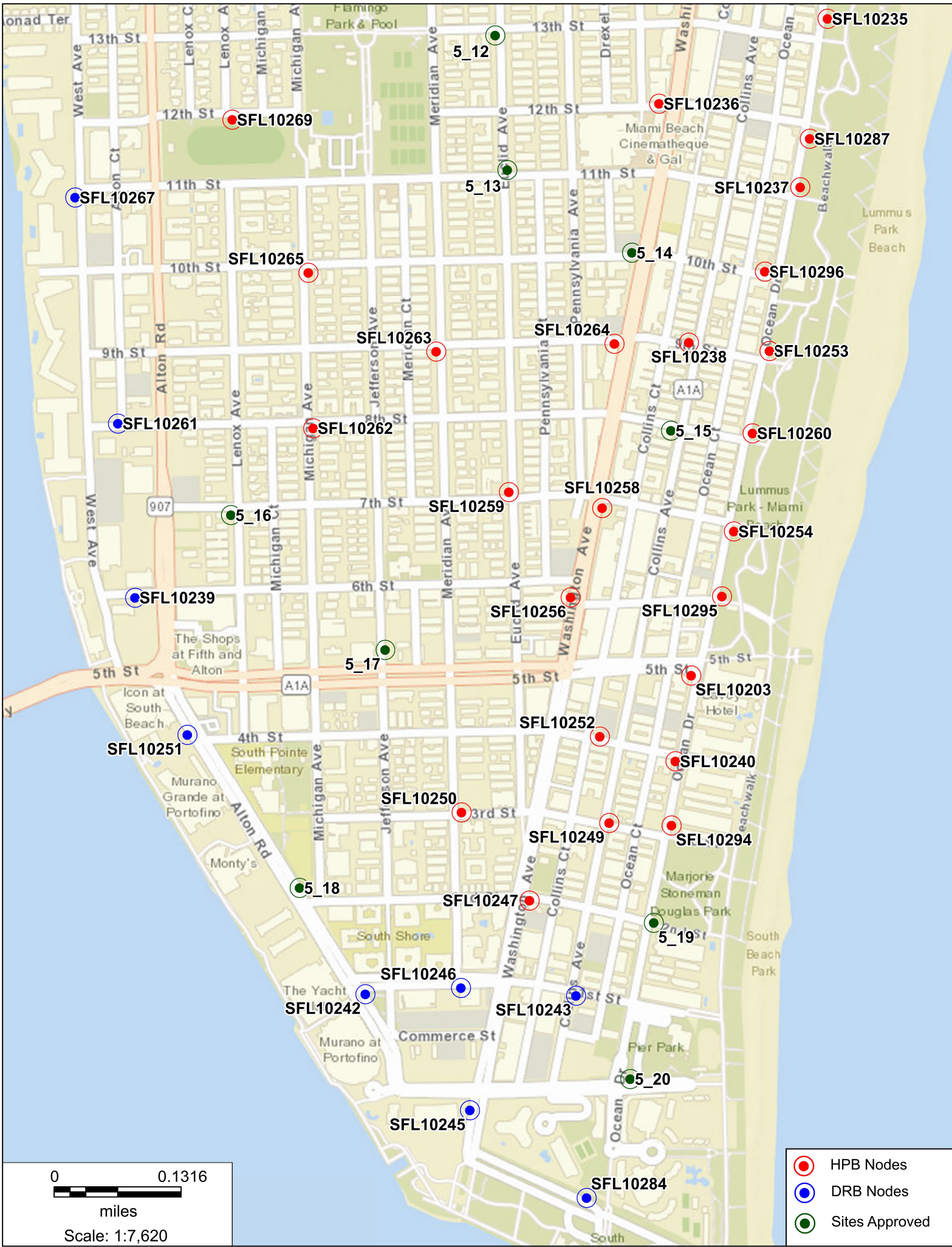














FL6443BA

651 West Ave, Miami Beach, FL, 33139

Proposed Front view





FL6443BA

651 West Ave, Miami Beach, FL, 33139

Proposed Side view





FL6443BA

Aerial View

651 West Ave, Miami Beach, FL, 33139





FL6443BA

651 West Ave, Miami Beach, FL, 33139

North





FL6443BA

East

651 West Ave, Miami Beach, FL, 33139





FL6443BA

651 West Ave, Miami Beach, FL, 33139

South





FL6443BA

651 West Ave, Miami Beach, FL, 33139

West

