

LEGEND	
	EXISTING SEWER CLEANOUT
	EXIST. ELECTRIC HANDHOLE
	EXIST. FIBER OPTIC HANDHOLE
	EXISTING GROUND LIGHT
	EXISTING MANHOLE
	EXIST. PEDESTRIAN SIGNAL
	EXISTING PLANTER
	EXISTING SEWER MANHOLE
	EXISTING SIGN
	EXISTING SEWER HANDHOLE
	EXISTING TRAFFIC HANDHOLE
	EXISTING WELL
	EXISTING WATER METER
	EXISTING WATER VALVE
	EXISTING PALM TREE

CROWN CASTLE
SMALL WIRELESS FACILITIES
HPB 19-0330 (SFL 10276)
2210 Collins Ave.

PROPOSED SITE PLAN
JULY 08, 2019
N.T.S.

R.J. HEISENBOTTLE ARCHITECTS, P.A.
2199 PONCE DE LEON BLV, CORAL GABLES, FLORIDA 33134
PHONE: 305.446.7799 / FAX: 305.446.9275
FLORIDA REGISTRATION NUMBER: AR 0010865

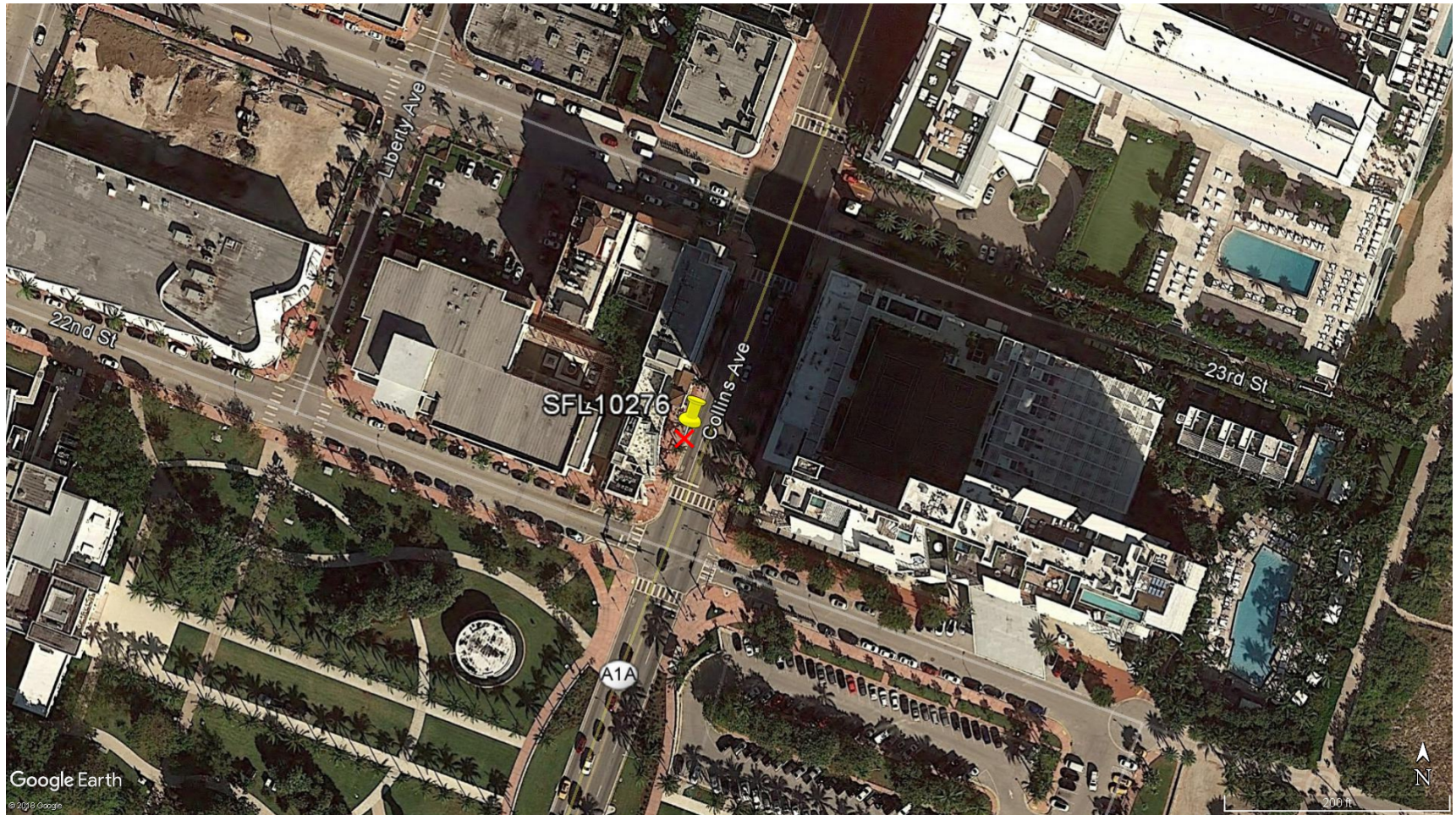


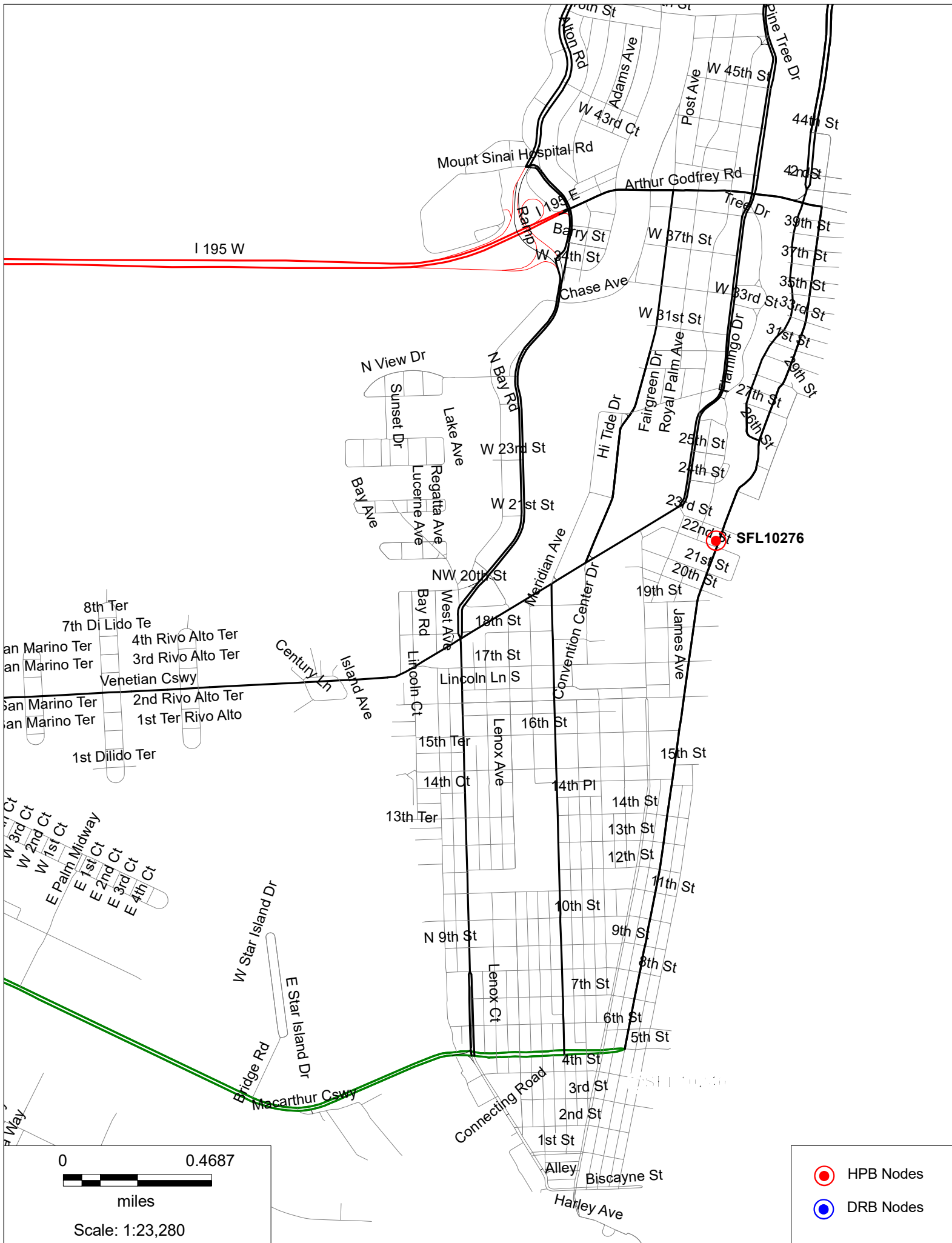
7.3.19

SFL10276

Aerial View

2210 Collins Ave., Miami Beach, FL 33139





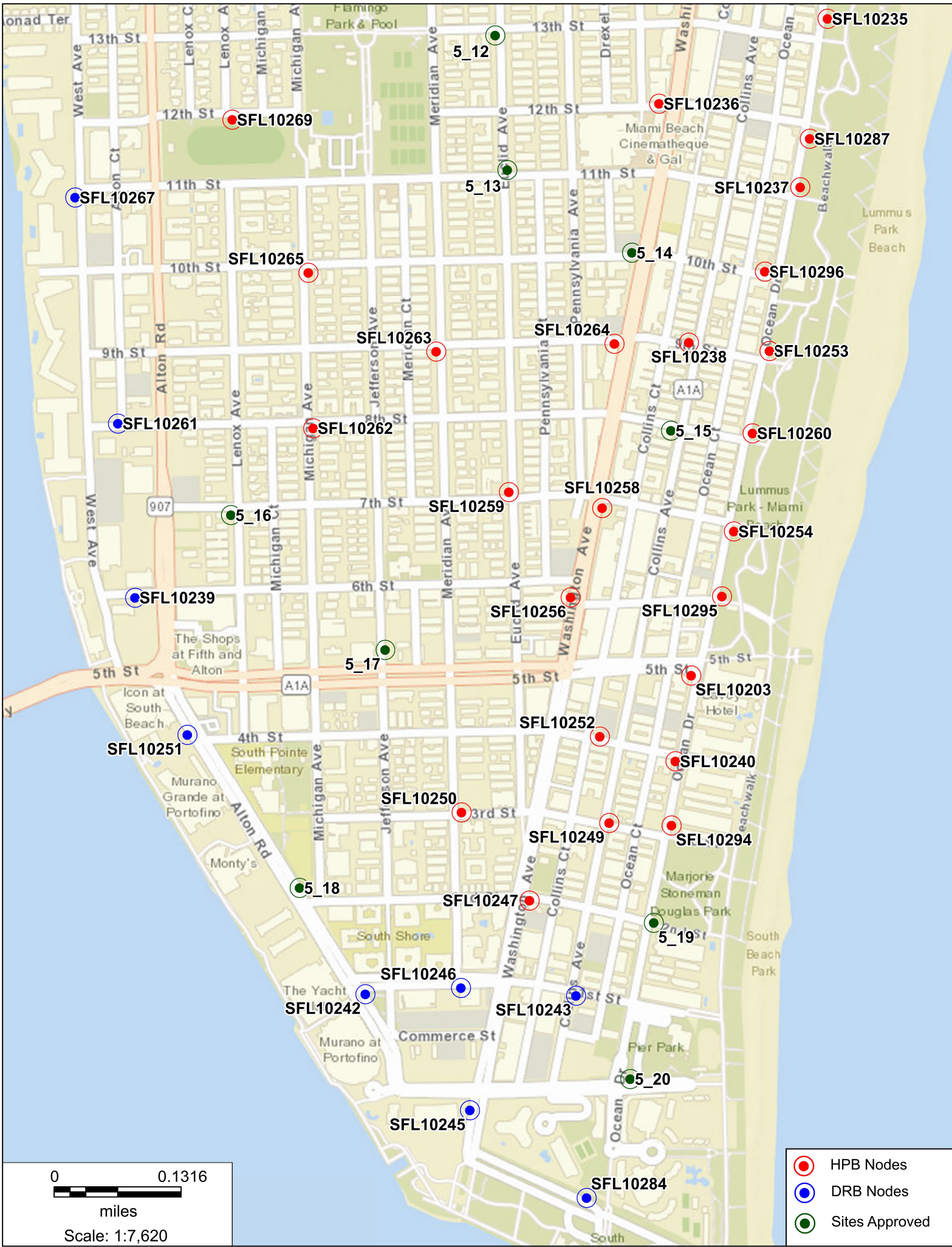








- HPB Nodes
- DRB Nodes
- Sites Approved



SFL10276

2210 Collins Ave., Miami Beach, FL 33139

Proposed Front view

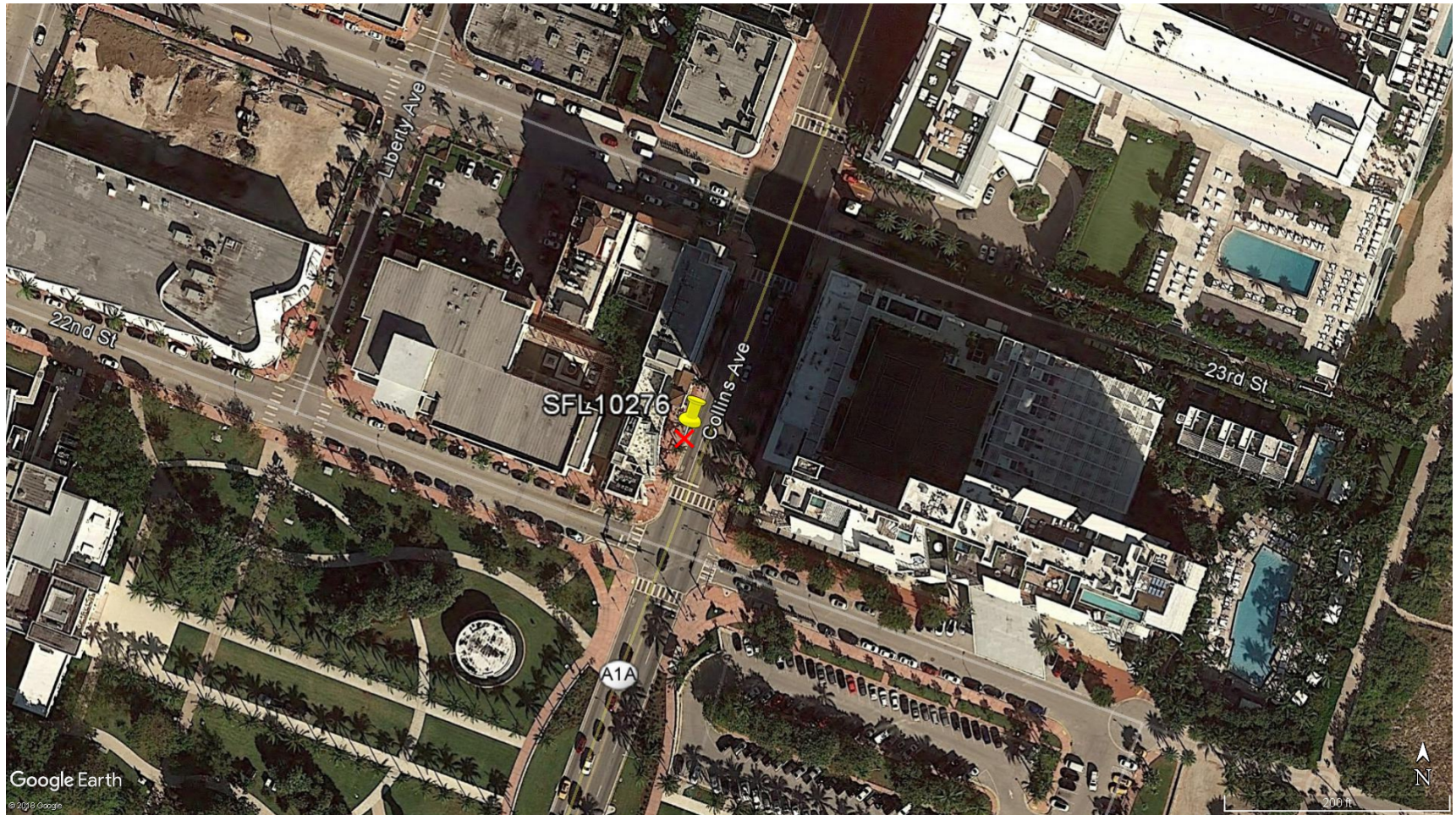




SFL10276

Aerial View

2210 Collins Ave., Miami Beach, FL 33139



2210 Collins Ave., Miami Beach, FL 33139



SFL10276

2210 Collins Ave., Miami Beach, FL 33139

East



SFL10276

2210 Collins Ave., Miami Beach, FL 33139

South



SFL10276

2210 Collins Ave., Miami Beach, FL 33139

West

