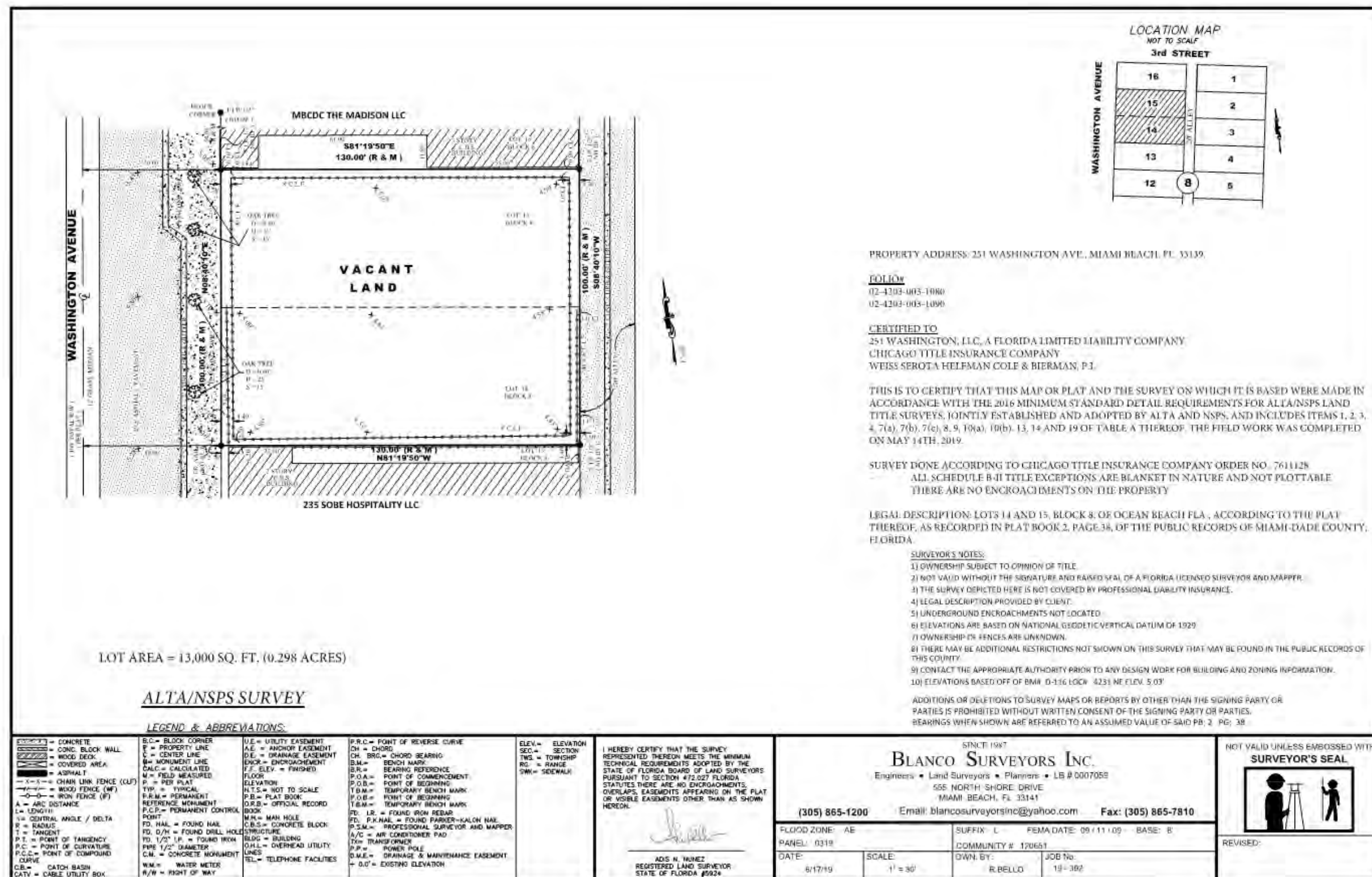




basecamp305

HISTORIC PRESERVATION BOARD  
JULY 8, 2019 SUBMITTAL PACKAGE

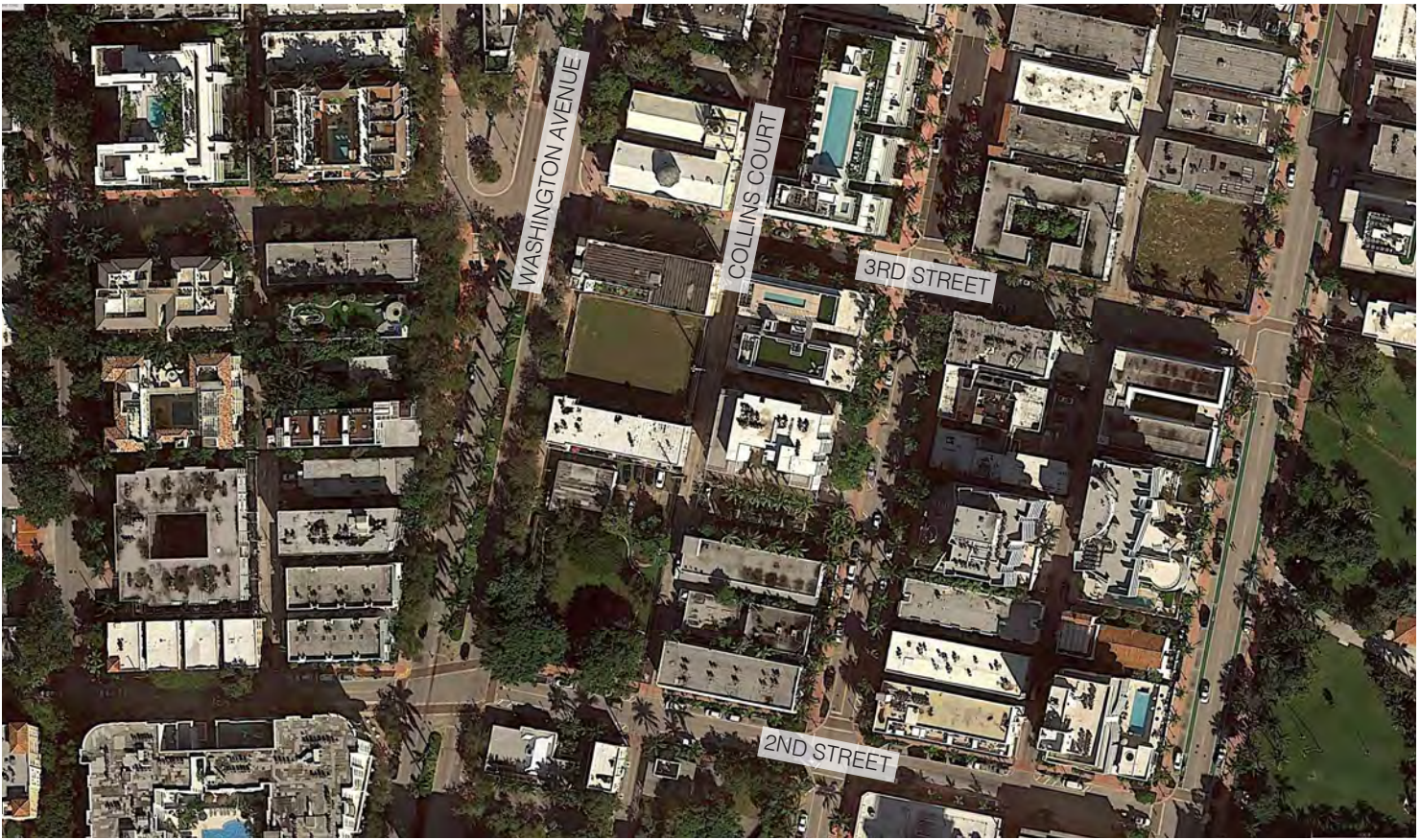
245 & 251 WASHINGTON AVENUE  
MIAMI BEACH





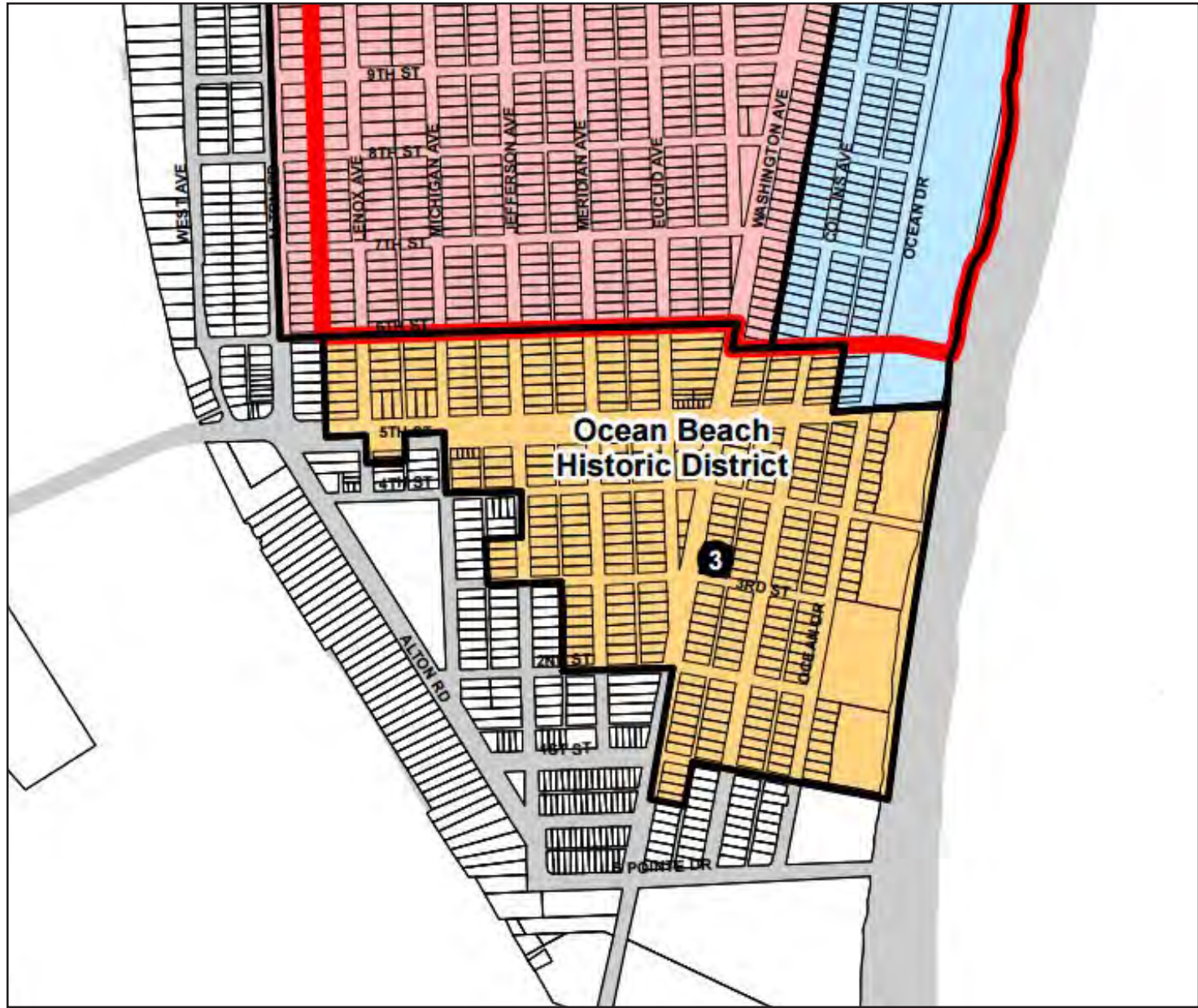


LOCATION MAP

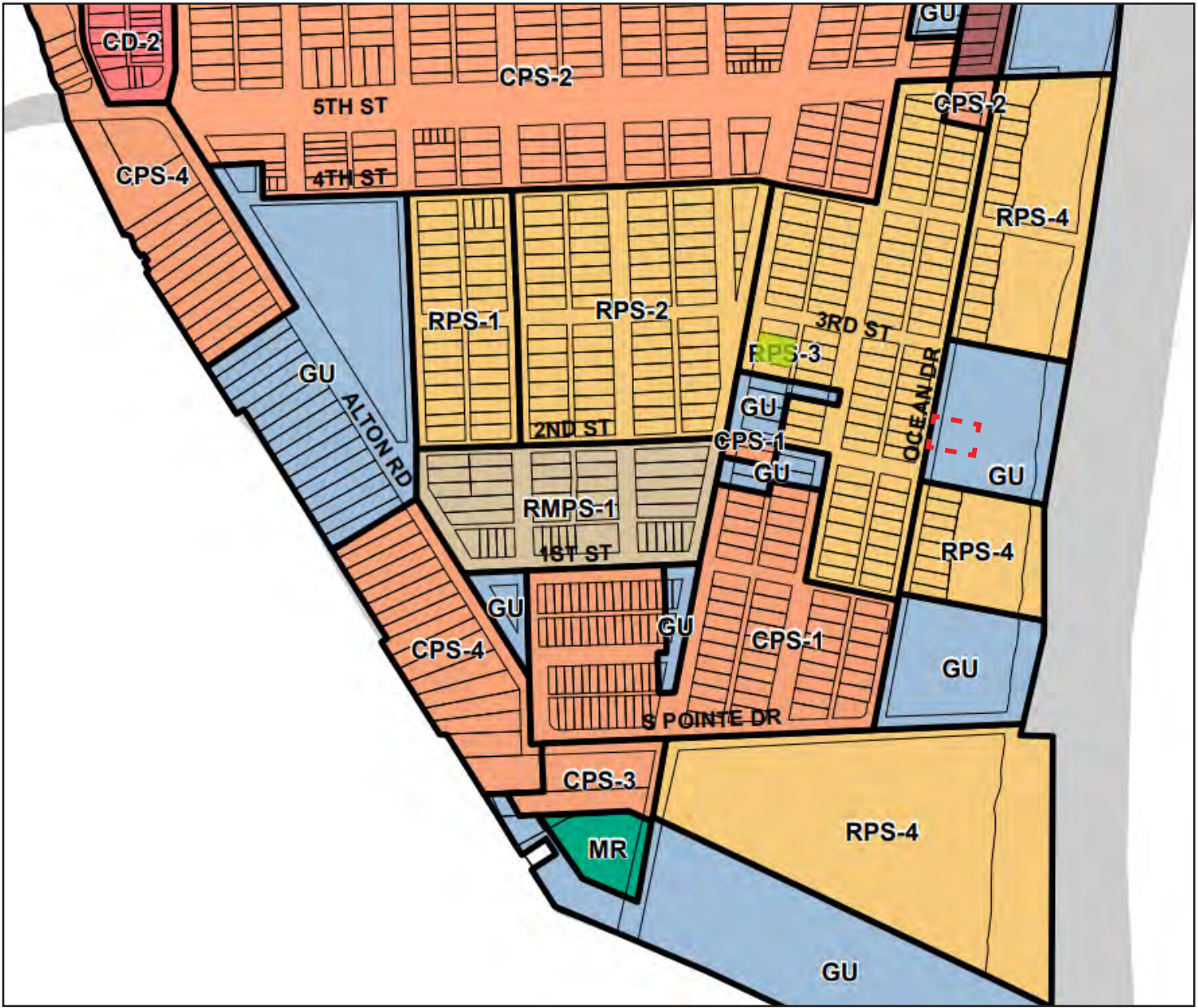


AREA MAP



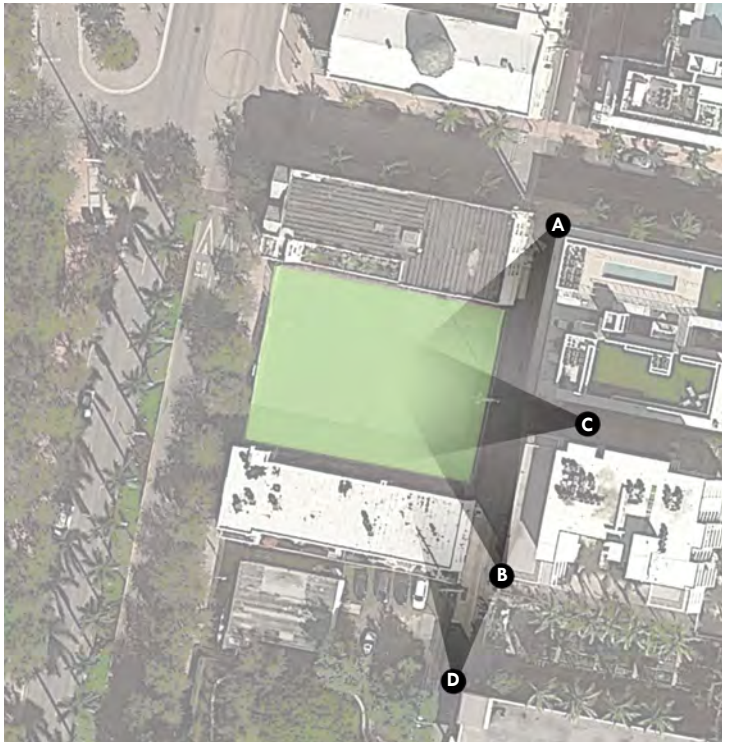


HISTORIC DISTRICTS MAP



ZONING MAP

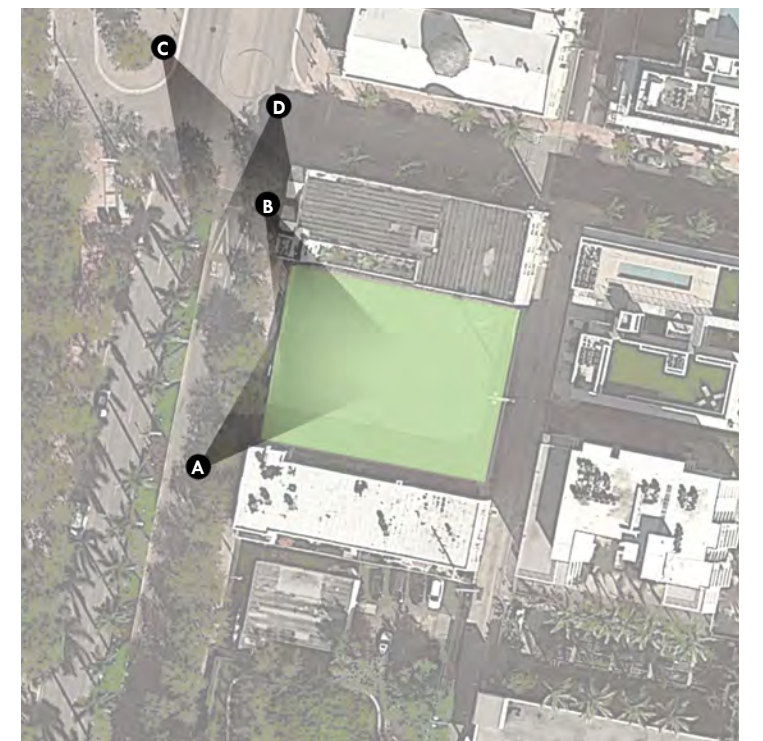




KEY PLAN



STREET TRASH  
RECEPTACLE TO BE  
REMOVED



KEY PLAN













245 & 251 WASHINGTON AVENUE MIAMI BEACH FLORIDA



No copies, transmissions, reproductions or electronic manipulation of any portion of these drawings in whole or in part are to be made without the express written permission of Touzet Studio Design & Architecture. All designs indicated in these drawings are property of Touzet Studio Design & Architecture. All copyrights reserved (c) 2014.



EXISTING SITE PLAN  
SCALE: 1:30

A-12