



A-401 Night Rendering: 1 Tenant facing 8th Street

743 Washington Avenue, Miami Beach FL
 Historic Preservation Board Final Submittal

File # 19-0134
 architecture / landscape architecture
 2455 SW 27th Avenue, Miami, FL 33145 305.310.2602





A-402 Day Rendering: 1 Tenant facing 8th Street

743 Washington Avenue, Miami Beach FL
 Historic Preservation Board Final Submittal

File # 19-0134
 architecture / landscape architecture
 2455 SW 27th Avenue, Miami, FL 33145 305.310.2602





A-403 Night Rendering: 2 Tenants facing 8th Street

743 Washington Avenue, Miami Beach FL
 Historic Preservation Board Final Submittal

File # 19-0134
 architecture / landscape architecture
 2455 SW 27th Avenue, Miami, FL 33145 305.310.2602





A-404 Day Rendering: 2 Tenants facing 8th Street

743 Washington Avenue, Miami Beach FL
 Historic Preservation Board Final Submittal

File # 19-0134
 architecture / landscape architecture
 2455 SW 27th Avenue, Miami, FL 33145 305.310.2602





black aluminum framed
impact glazing and doors



white painted stucco with
vertical scoring



black metal entry canopy

8th Street



existing black mosaic
tiles to remain

Washington Avenue



frosted film on inside face
of existing glazing



fabric awning



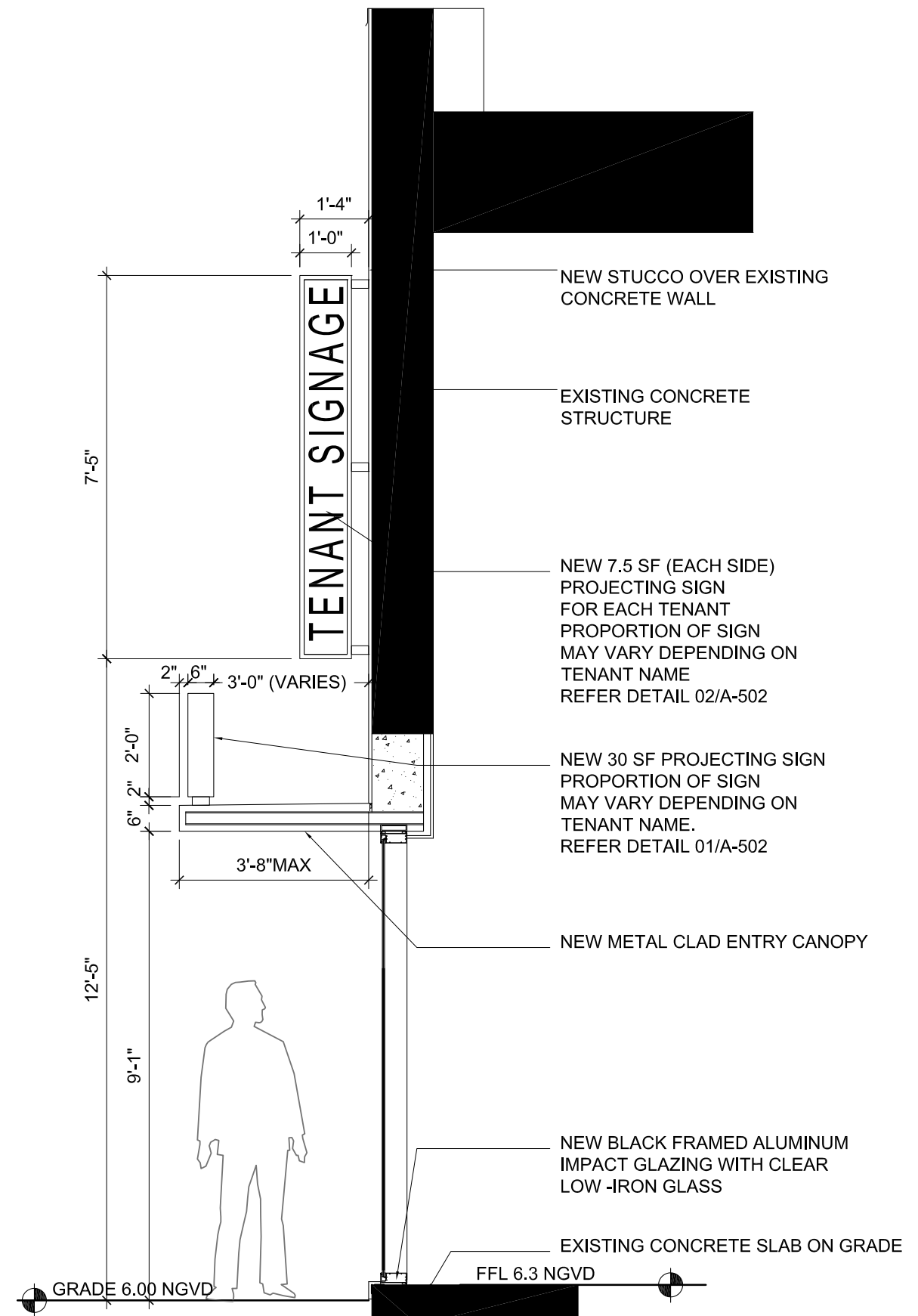
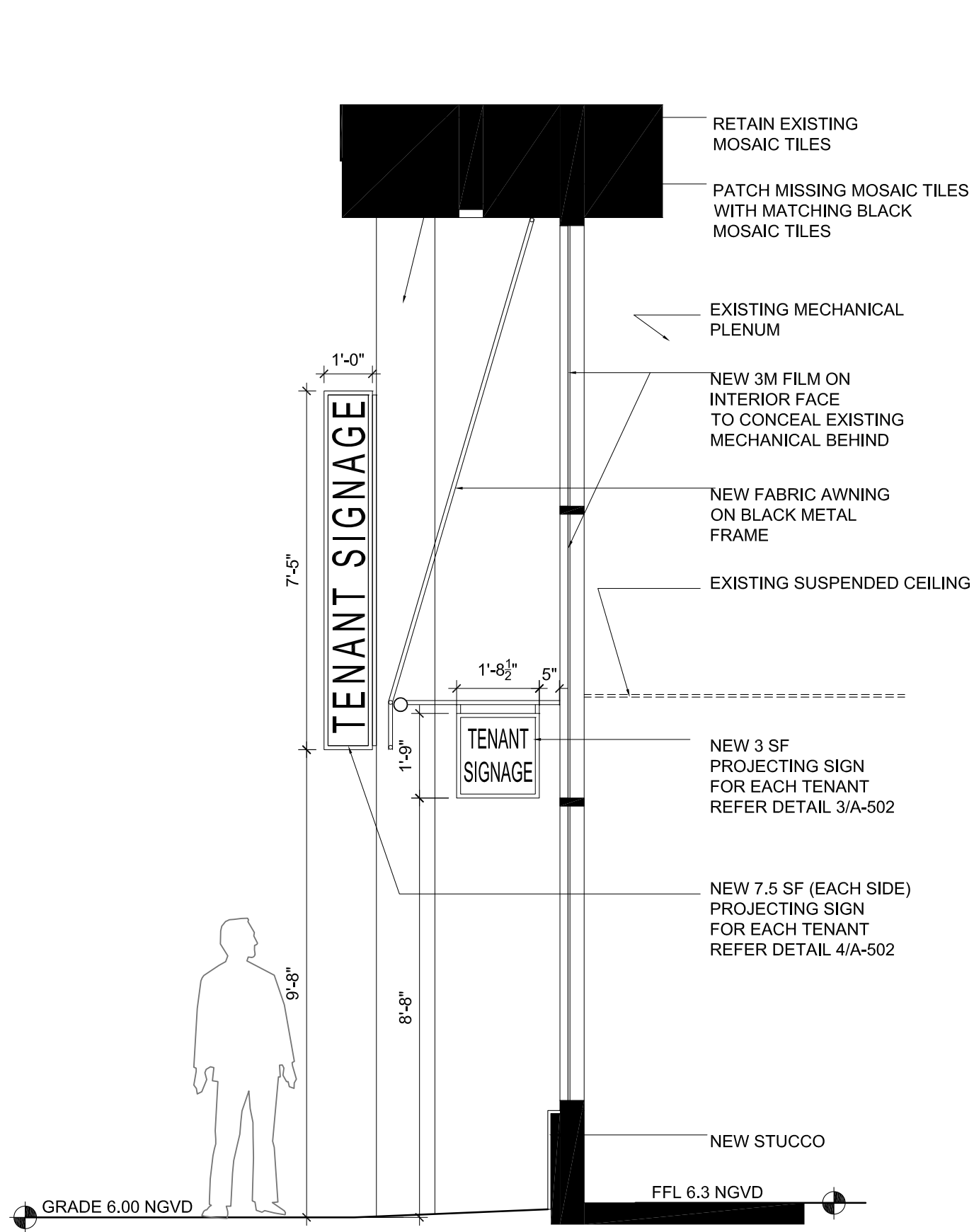
white painted stucco
knee wall

A-405 Material Palette

743 Washington Avenue, Miami Beach FL
Historic Preservation Board Final Submittal

File # 19-0134
architecture / landscape architecture
2455 SW 27th Avenue, Miami, FL 33145 305.310.2602



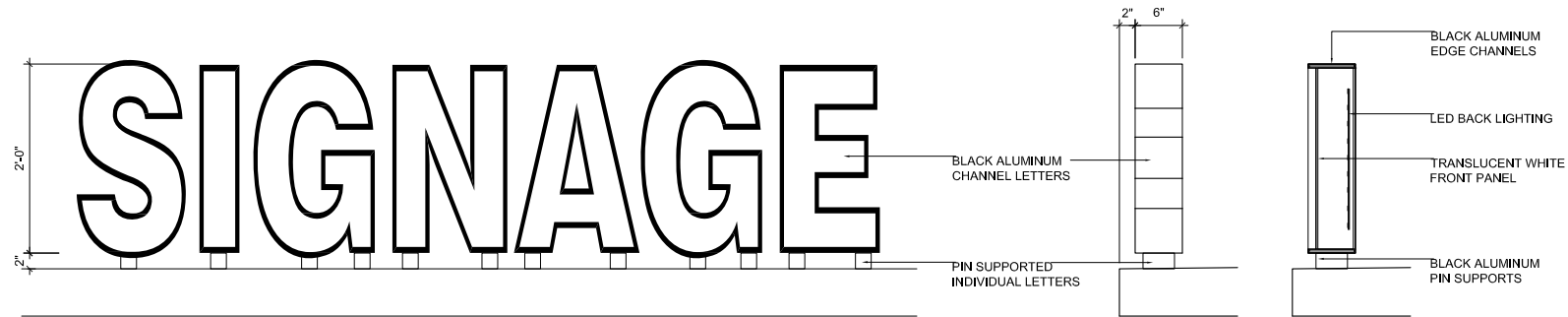


A-501 Wall Sections

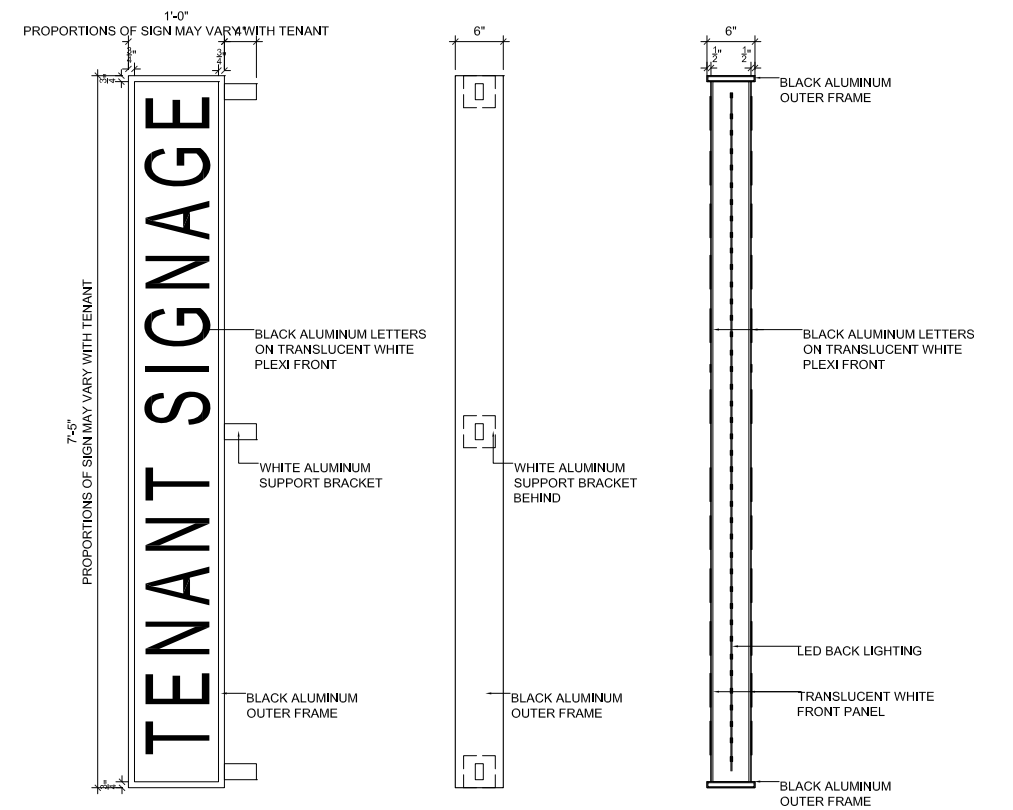
743 Washington Avenue, Miami Beach FL
Historic Preservation Board Final Submittal

File # 19-0134
architecture / landscape architecture
2455 SW 27th Avenue, Miami, FL 33145 305.310.2602

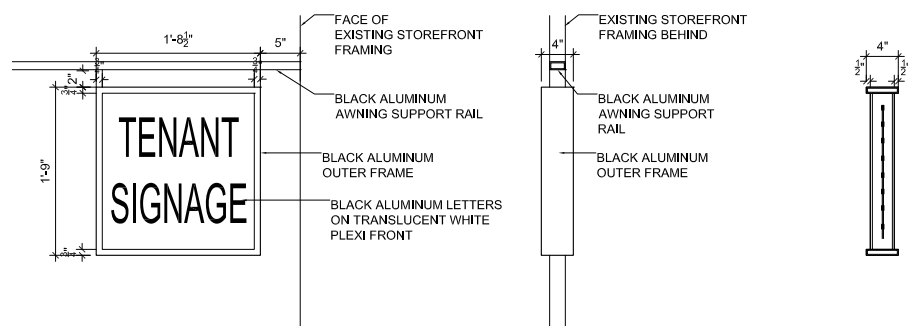
1



2



3



4

