

CITY OF MIAMI BEACH

LANDSCAPE LEGEND

INFORMATION REQUIRED TO BE PERMANENTLY AFFIXED TO PLANS  
Zoning District: RM-1 Lot Area 2,829 S.F. Acres 0.064

OPEN SPACE

- A. Square feet of required Open Space as indicated on site plan:  
Lot Area = 2,829 s.f. x 50 % = 1,415 s.f.
- B. Square feet of parking lot open space required as indicated on site  
Number of parking spaces \_\_\_\_\_ x 10 s.f. parking space =
- C. Total square feet of landscaped open space required: A+B=

REQUIRED/ ALLOWED	PROVIDED
1,415	1,555
N/A	N/A
1,415	1,555

LAWN AREA CALCULATION

- A. Square feet of landscaped open space required
- B. Maximum lawn area (sod) permitted= 50 % x 1,555 s.f.

1,415	1,555
778	2,861

TREES

- A. Number of trees required per lot or net lot acre, less existing number of trees meeting minimum requirements=
- \_\_\_\_\_ trees x \_\_\_\_\_ net lot acres - number of existing trees=
- B. % Natives required: Number of trees provided x 30% =
- C. % Low maintenance / drought and salt tolerant required:  
Number of trees provided x 50%=
- D. Street Trees (maximum average spacing of 20' o.c.)  
\_\_\_\_\_ linear feet along street divided by 20'=
- E. Street tree species allowed directly beneath power lines:  
(maximum average spacing of 20' o.c.):  
\_\_\_\_\_ linear feet along street divided by 20'=

2	2
1	2
1	2
3	3
N/A	N/A

SHRUBS

- A. Number of shrubs required: Sum of lot and street trees required x 12=
- B. % Native shrubs required: Number of shrubs provided x 50%=

60	443
222	301

LARGE SHRUBS OR SMALL TREES

- A. Number of large shrubs or small trees required: Number of required shrubs x 10%=
- B. % Native large shrubs or small trees required: Number of large shrubs or small trees provided x 50%=

6	54
1	6

PLANTLIST

TREES & PALMS

QTY	KEY	BOTANICAL NAME	COMMON NAME	DESCRIPTION
6	CC*	Capparis cynophallophora	Jamaican Caper	25 gal, 8' ht
2	CS*	Conocarpus erectus 'sericeus'	Silver Buttonwood	12' ht, 2" cal
1	DC	Dyopsis cabadae	Cabada Palm	14' oa ht, triple
1	QV*	Quercus virginiana 'high rise'	High Rise Live Oak	16' ht, 8' spr, 4" cal
2	CR*	Clusia rosea	Clusia	12' ht, 2" cal

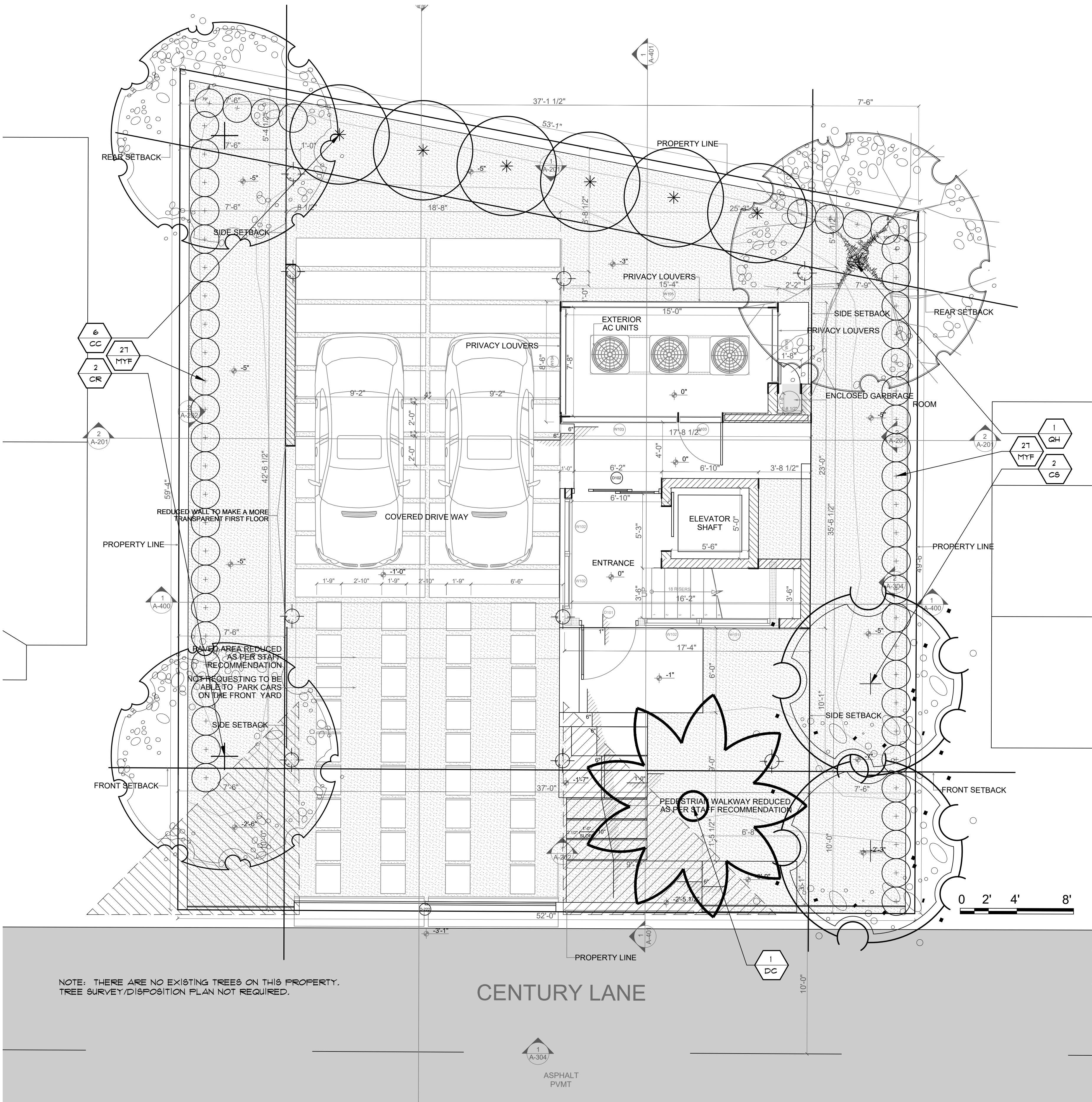
SHRUBS & GROUNDCOVERS

QTY	KEY	BOTANICAL NAME	COMMON NAME	DESCRIPTION
54	MYF*	Myrciathes fragans	Simpson Stopper	3 gal, 24" ht

\* Denotes Native Species

NOTE:

- REFER TO ARCHITECTURAL PLANS FOR PROPOSED UTILITIES. SHOULD LANDSCAPE INTERFERE WITH PROPOSED UTILITIES CONTACT THE LANDSCAPE ARCHITECT TO FIELD ADJUST PROPOSED LANDSCAPE.
- SHOULD PROPOSED UTILITIES INTERFERE WITH EXISTING ROOTS, CONTACT THE LANDSCAPE ARCHITECT. UTILITIES NEED TO BE READJUSTED IN ORDER TO AVOID ANY EXISTING ROOTS.
- THE LANDSCAPE CONTRACTOR SHALL GUARANTEE ALL NEW TREES AND PALMS FOR A PERIOD OF 1-YEAR FROM THE DATE OF INITIAL ACCEPTANCE.
- ALL GUYING AND STAKING SHALL BE REMOVED FROM ALL TREES AND PALMS WITHIN TWELVE MONTHS AFTER PLANTING. EXCEPTIONS REQUIRE WRITTEN AUTHORIZATION FROM THE CITY URBAN FORESTER.
- A FINAL ONSITE INSPECTION SHALL BE REQUIRED WITH URBAN FORESTRY STAFF PRIOR TO ANY OFFICIAL ACCEPTANCE OF ROW PLANT MATERIAL IN ORDER TO VERIFY PROPER PLANTING DEPTH, SPACING AND QUALITY OF MATERIAL. FAILURE TO CONDUCT THE INSPECTION COULD RESULT IN REJECTION OF THE PLANT MATERIAL.



REVISIONS

4/3/19 CITY COMMENTS  
6/6/19 SITE PLAN

LANDSCAPE PLAN

NEW RESIDENCE  
11 CENTURY LANE  
MIAMI BEACH, FLORIDA

**Diego Vanderbiest**  
6200 SW 80 ST  
MIAMI, FLORIDA 33143  
(305) 528-4001

SEAL

DIEGO J. VANDERBIEST  
P.L.A. 16661395

DRAWN

DV

DATE

3/17/19

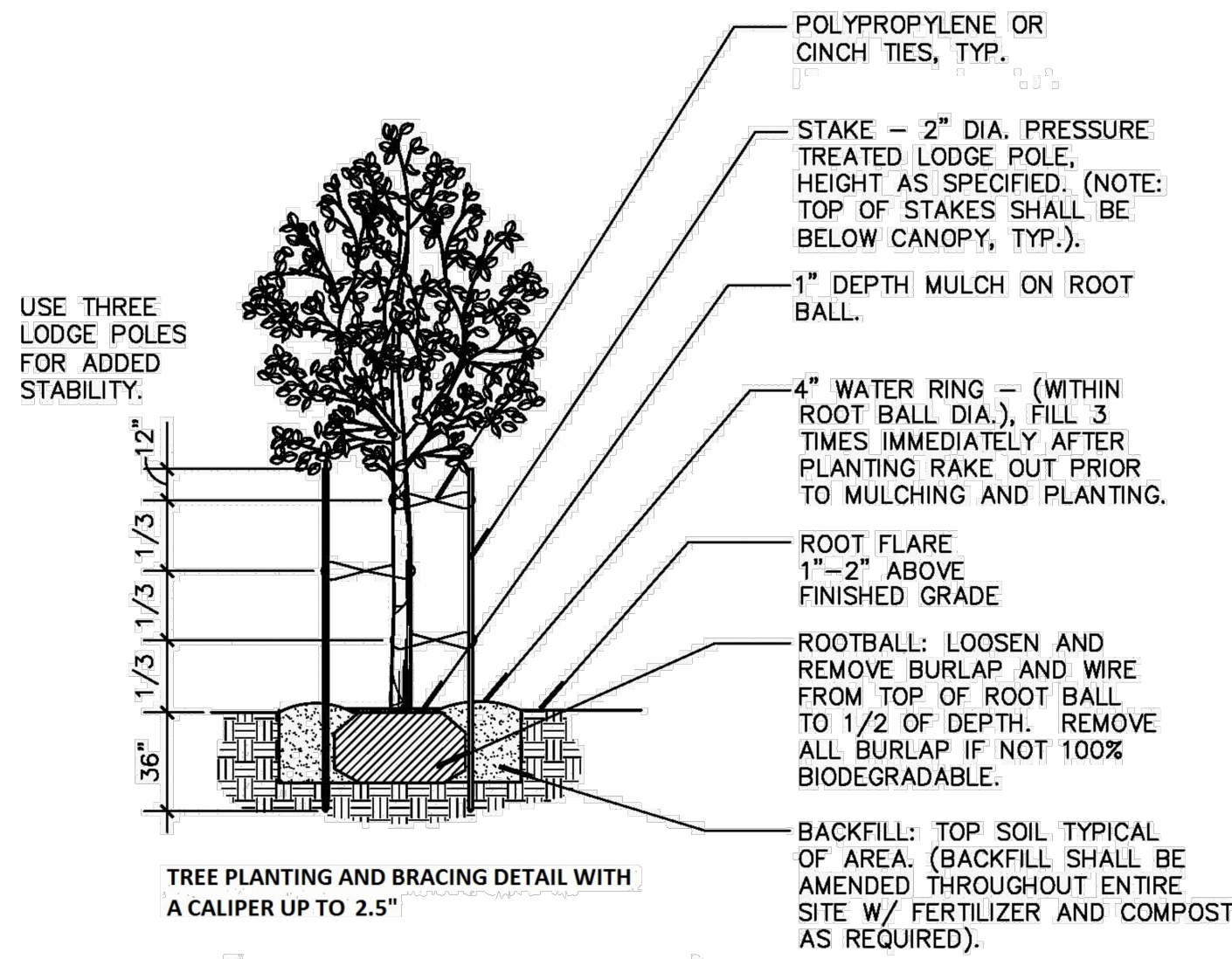
SCALE

1/4" = 1'-0"

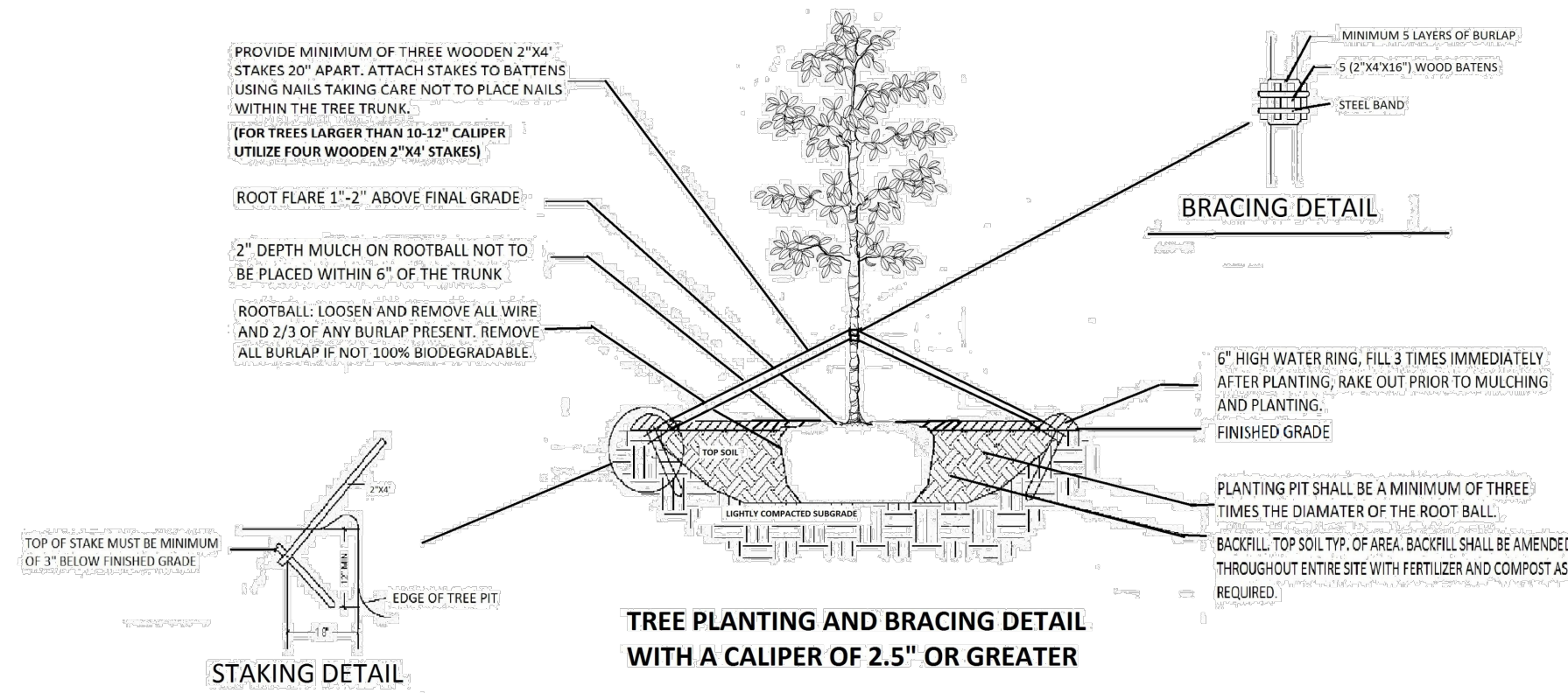
SHEET

1  
OF - SHEETS

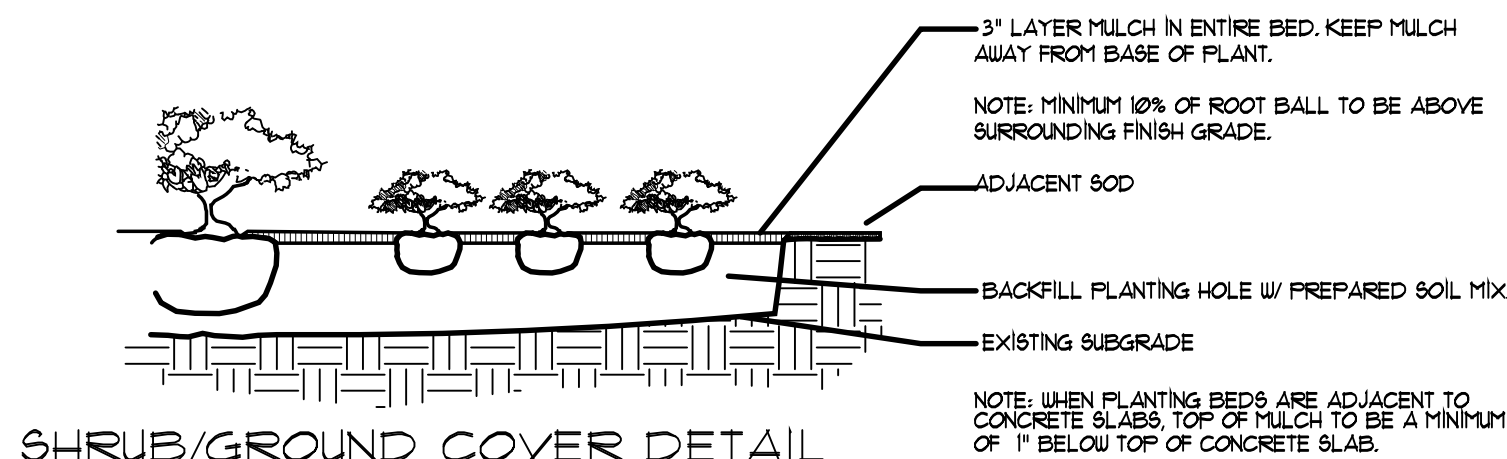




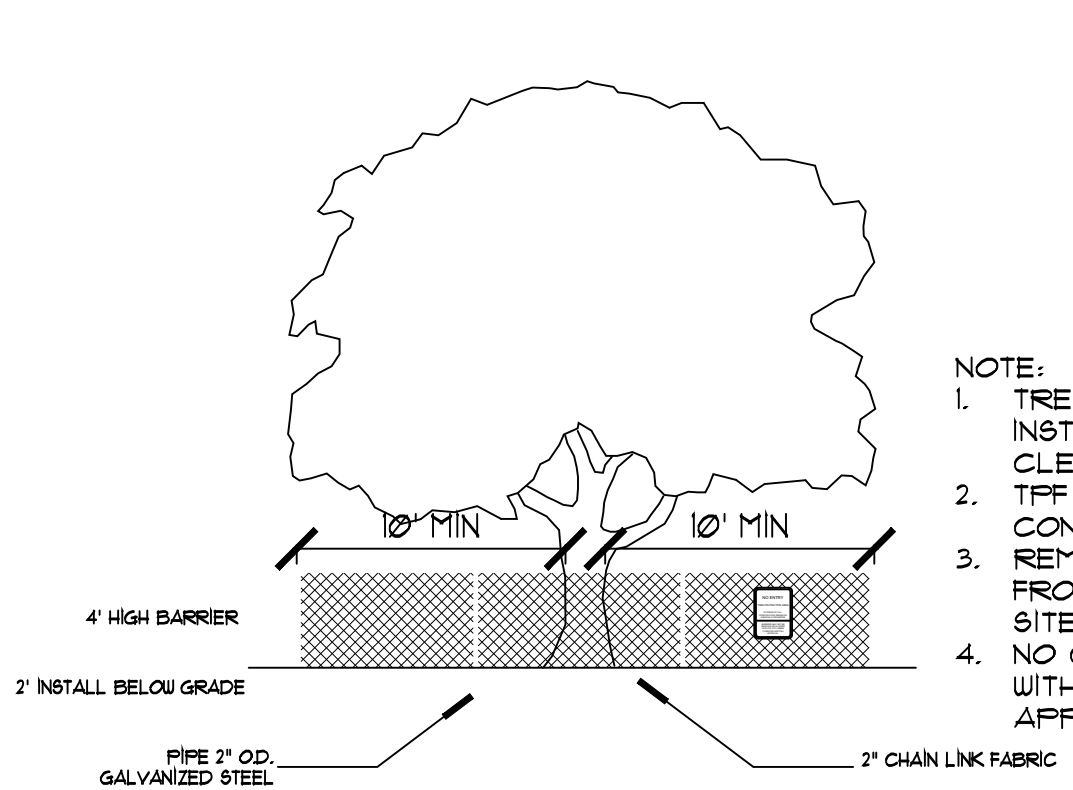
- NOTES
- MULCH SHALL BE AMERIGROW RECYCLED PREMIUM PINEBARK BROWN OR CITY APPROVED EQUIVALENT.
  - DO NOT APPLY MULCH WITHIN 6" OF THE TREE TRUNK



- NOTES
- MULCH SHALL BE AMERIGROW RECYCLED PREMIUM PINEBARK BROWN OR CITY APPROVED EQUIVALENT.



N.T.S.



TREE BARRIER DETAIL - 4' CHAIN LINK

N.T.S.

## PLANT NOTES

1. ALL PLANT MATERIAL TO BE FLORIDA NO. 1 OR BETTER FLORIDA DEPARTMENT OF AGRICULTURE GRADES AND STANDARDS: PARTS I AND II, 2ND EDITION: FEBRUARY 1998, RESPECTIVELY.

2. ALL PLANTING BEDS TO BE TOPPED WITH 3" MULCH EXCLUDING TOP OF ROOT BALL (SEE PALM/ TREE PLANTING DETAIL).

3. ALL TREES TO BE STAKED IN A GOOD WORKMANLIKE MANNER, NO NAIL STAKING IN TRUNKS PERMITTED.

4. LANDSCAPE PLAN SHALL BE INSTALLED IN COMPLIANCE WITH ALL LOCAL CODES.

5. ALL SOD SHALL BE ST. AUGUSTINE 'FLORATAM' SOLID SOD, (UNLESS OTHERWISE NOTED) AND LAID WITH ALTERNATING AND ABUTTING JOINTS.

6. ALL PLANTING BEDS TO BE WEED AND GRASS FREE.

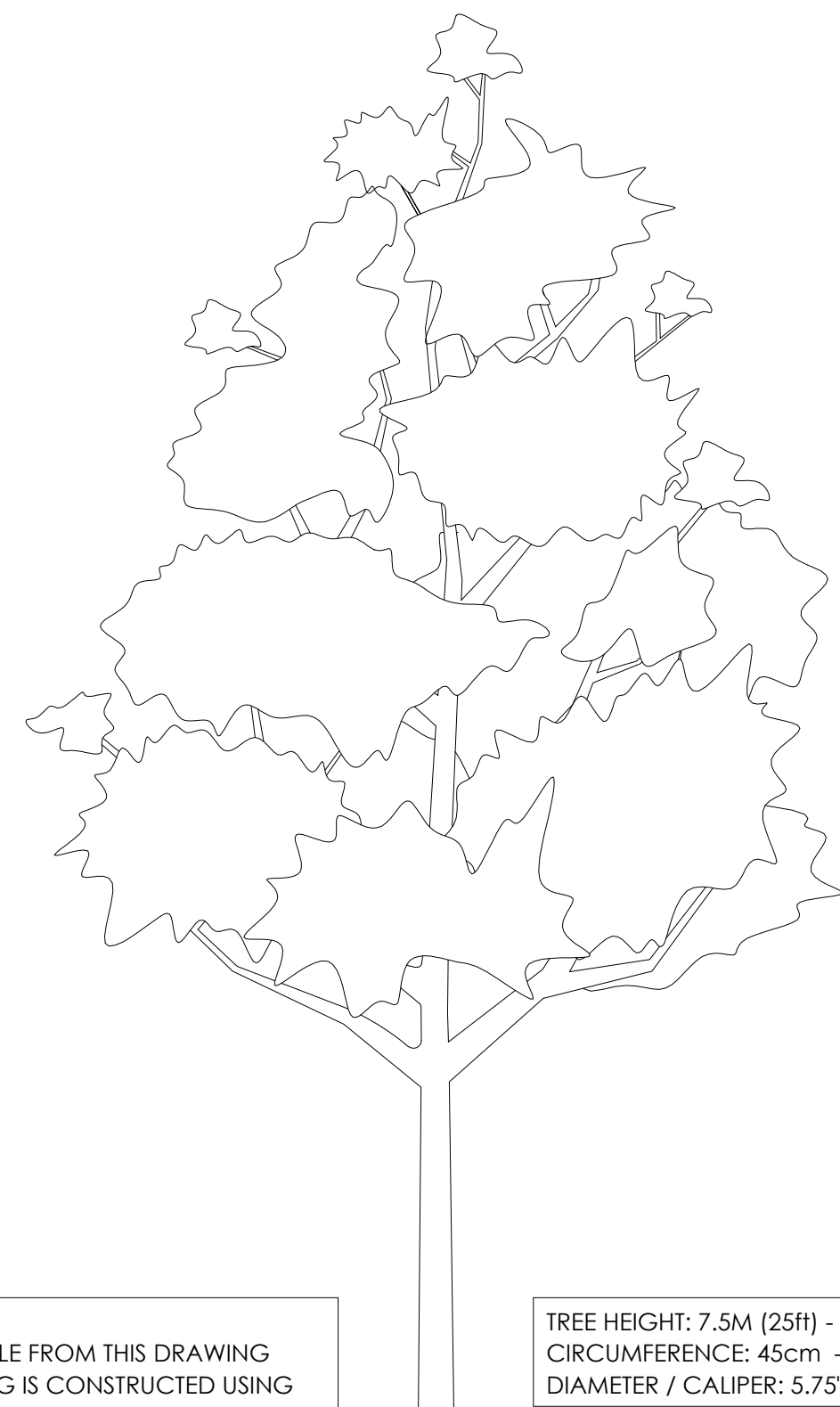
7. LANDSCAPE CONTRACTOR SHALL REVIEW ALL DRAWINGS AND PREPARE ONE'S OWN QUANTITY COUNTS PRIOR TO BID COST AND COMPARE TO ARCHITECT'S PLANT LIST. LANDSCAPE CONTRACTOR IS RESPONSIBLE FOR ATTAINING ACCURATE COUNT OF PLANT MATERIALS SPECIFIED. IN THE EVENT OF DISCREPANCIES, LANDSCAPE CONTRACTORS SHALL BRING TO THE ATTENTION OF LANDSCAPE ARCHITECT. PLAN SHALL TAKE PRECEDENCE OVER PLANT LIST.

8. LANDSCAPE CONTRACTOR SHALL LOCATE AND VERIFY ALL UNDERGROUND UTILITIES PRIOR TO DIGGING.

9. NO CHANGES SHALL BE MADE WITHOUT THE PRIOR CONSENT OF THE LANDSCAPE ARCHITECT.

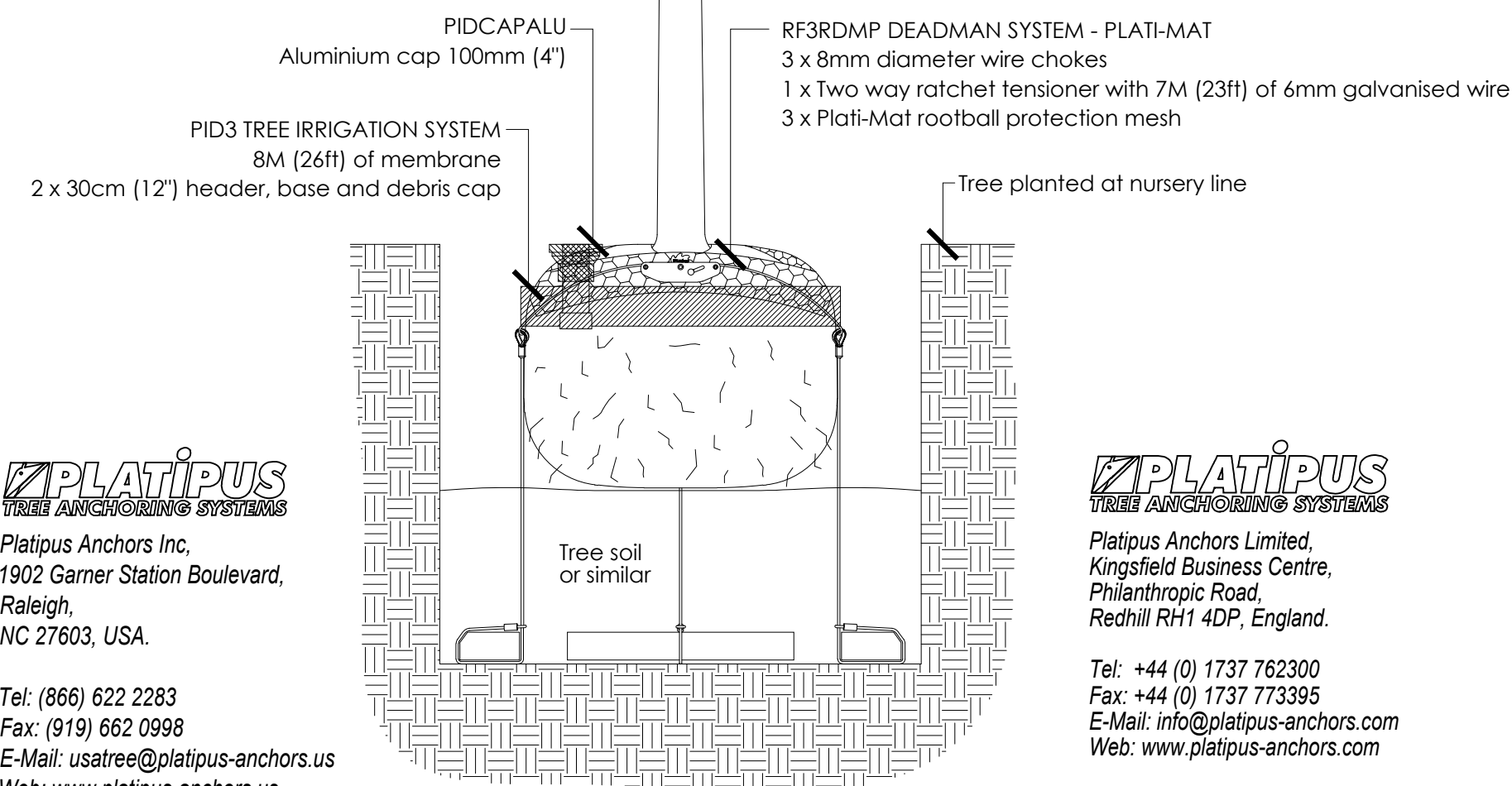
10. ALL PLANTED AREAS TO RECEIVE 100% COVERAGE BY AN AUTOMATIC IRRIGATION SYSTEM, WITH A MINIMUM OF 50% OVERLAP. RAIN SENSOR TO BE PROVIDED.

- NOTE:
- REFER TO ARCHITECTURAL PLANS FOR PROPOSED UTILITIES. SHOULD LANDSCAPE INTERFERE WITH PROPOSED UTILITIES CONTACT THE LANDSCAPE ARCHITECT TO FIELD ADJUST PROPOSED LANDSCAPE.
  - SHOULD PROPOSED UTILITIES INTERFERE WITH EXISTING ROOTS, CONTACT THE LANDSCAPE ARCHITECT. UTILITIES NEED TO BE READJUSTED IN ORDER TO AVOID ANY EXISTING ROOTS.
  - THE LANDSCAPE CONTRACTOR SHALL GUARANTEE ALL NEW TREES AND PALMS FOR A PERIOD OF 1-YEAR FROM THE DATE OF INITIAL ACCEPTANCE.
  - ALL GUYING AND STAKING SHALL BE REMOVED FROM ALL TREES AND PALMS WITHIN TWELVE MONTHS AFTER PLANTING. EXCEPTIONS REQUIRE WRITTEN AUTHORIZATION FROM THE CITY URBAN FORESTER.
  - A FINAL ONSITE INSPECTION SHALL BE REQUIRED WITH URBAN FORESTRY STAFF PRIOR TO ANY OFFICIAL ACCEPTANCE OF ROW PLANT MATERIAL IN ORDER TO VERIFY PROPER PLANTING DEPTH, SPACING AND QUALITY OF MATERIAL. FAILURE TO CONDUCT THE INSPECTION COULD RESULT IN REJECTION OF THE PLANT MATERIAL.



- NOTES
- DO NOT SCALE FROM THIS DRAWING
  - THIS DRAWING IS CONSTRUCTED USING LAYERS WHICH CAN BE TURNED ON OR OFF AS REQUIRED
  - DUE TO SETTLEMENT ALL TREES SHOULD BE RE-TENSIONED AFTER PLANTING
  - SOIL MUST BE COMPACTED PROPERLY FOR DEADMAN SYSTEM TO WORK EFFECTIVELY

TREE HEIGHT: 7.5M (25ft) - 12M (40ft)  
CIRCUMFERENCE: 45cm - 75cm  
DIAMETER / CALIPER: 5.75\"/>



**PLATIPUS**  
TREE ANCHORING SYSTEMS  
Platipus Anchors Inc.  
1902 Garner Station Boulevard,  
Raleigh,  
NC 27603, USA.

Tel: (866) 622 2283  
Fax: (919) 662 0998  
E-Mail: [usatree@platipus-anchors.us](mailto:usatree@platipus-anchors.us)  
Web: [www.platipus-anchors.us](http://www.platipus-anchors.us)

**PLATIPUS**  
TREE ANCHORING SYSTEMS  
Platipus Anchors Limited,  
Kingsfield Business Centre,  
Philanthropic Road,  
Redhill RH1 4DP, England.

Tel: +44 (0) 1737 762300  
Fax: +44 (0) 1737 775395  
E-Mail: [info@platipus-anchors.com](mailto:info@platipus-anchors.com)  
Web: [www.platipus-anchors.com](http://www.platipus-anchors.com)

© 2013, PLATIPUS ANCHORS

## REVISIONS

4/3/19 CITY COMMENTS

## LANDSCAPE PLAN

NEW RESIDENCE  
11 CENTURY LANE  
MIAMI BEACH, FLORIDA

**Diego Vanderbiest**  
6200 SW 80 ST  
MIAMI, FLORIDA 33143  
(305) 528-4001

SEAL

DIEGO J. VANDERBIEST  
FLA 16661395

DRAWN

DV

DATE

3/17/19

SCALE

N.T.S.

SHEET

LA=2  
OF - SHEETS