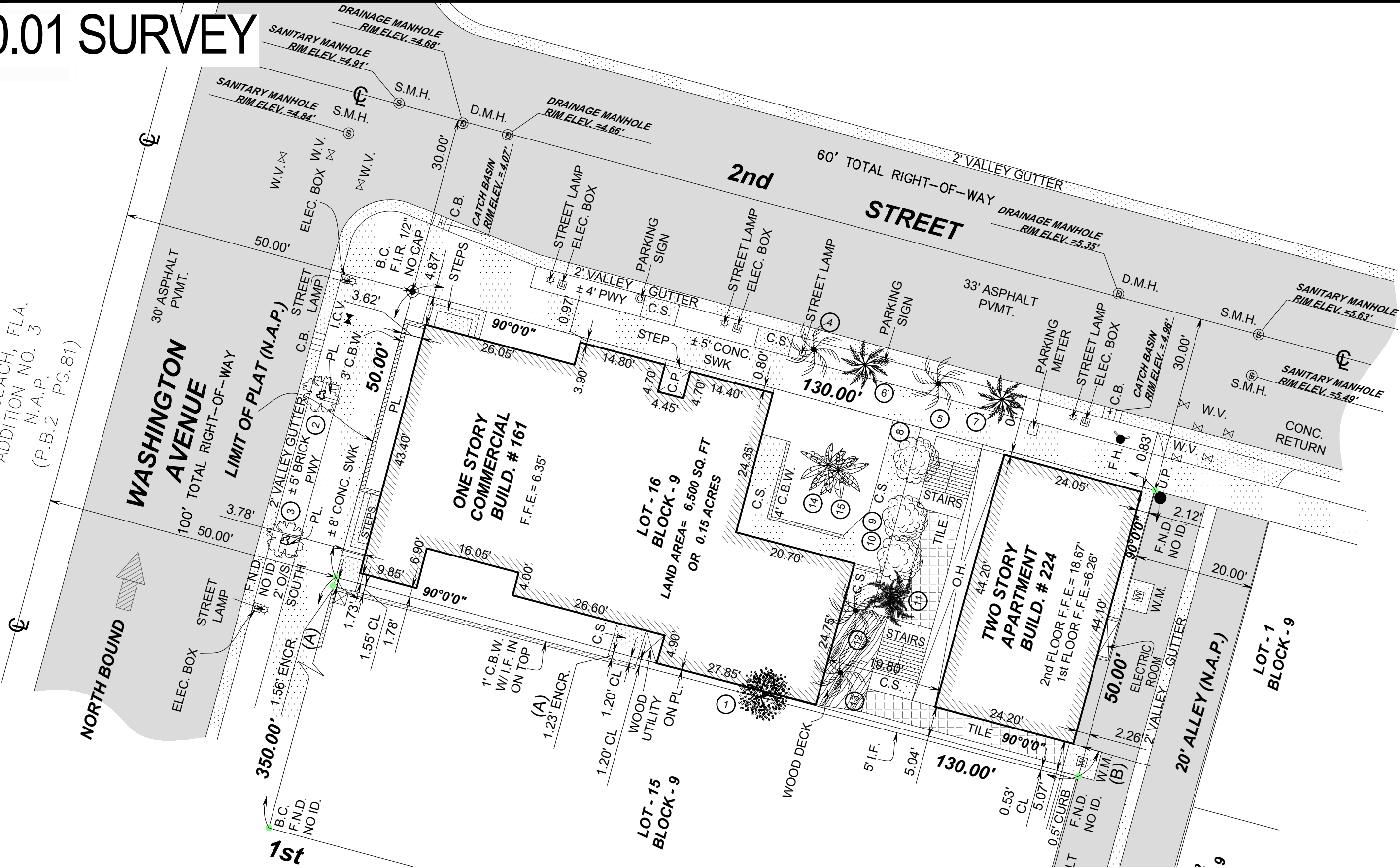
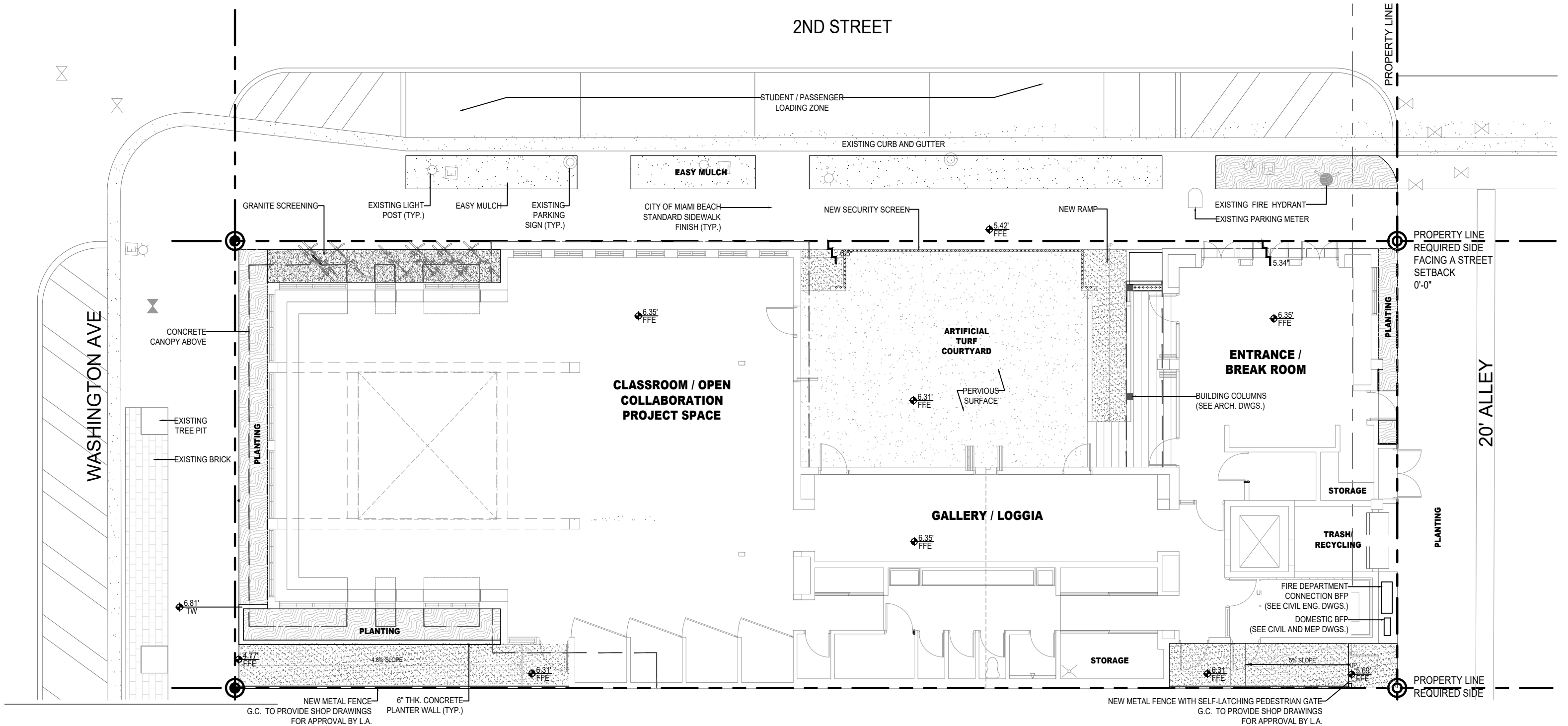


L-0.01 SURVEY

OCEAN BEACH, FLA.
ADDITION NO. 3
N.A.P.
(P.B.2 PG.81)



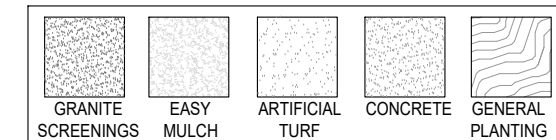
L-1.10 GROUND LEVEL HARDSCAPE PLAN



GENERAL ABBREVIATIONS

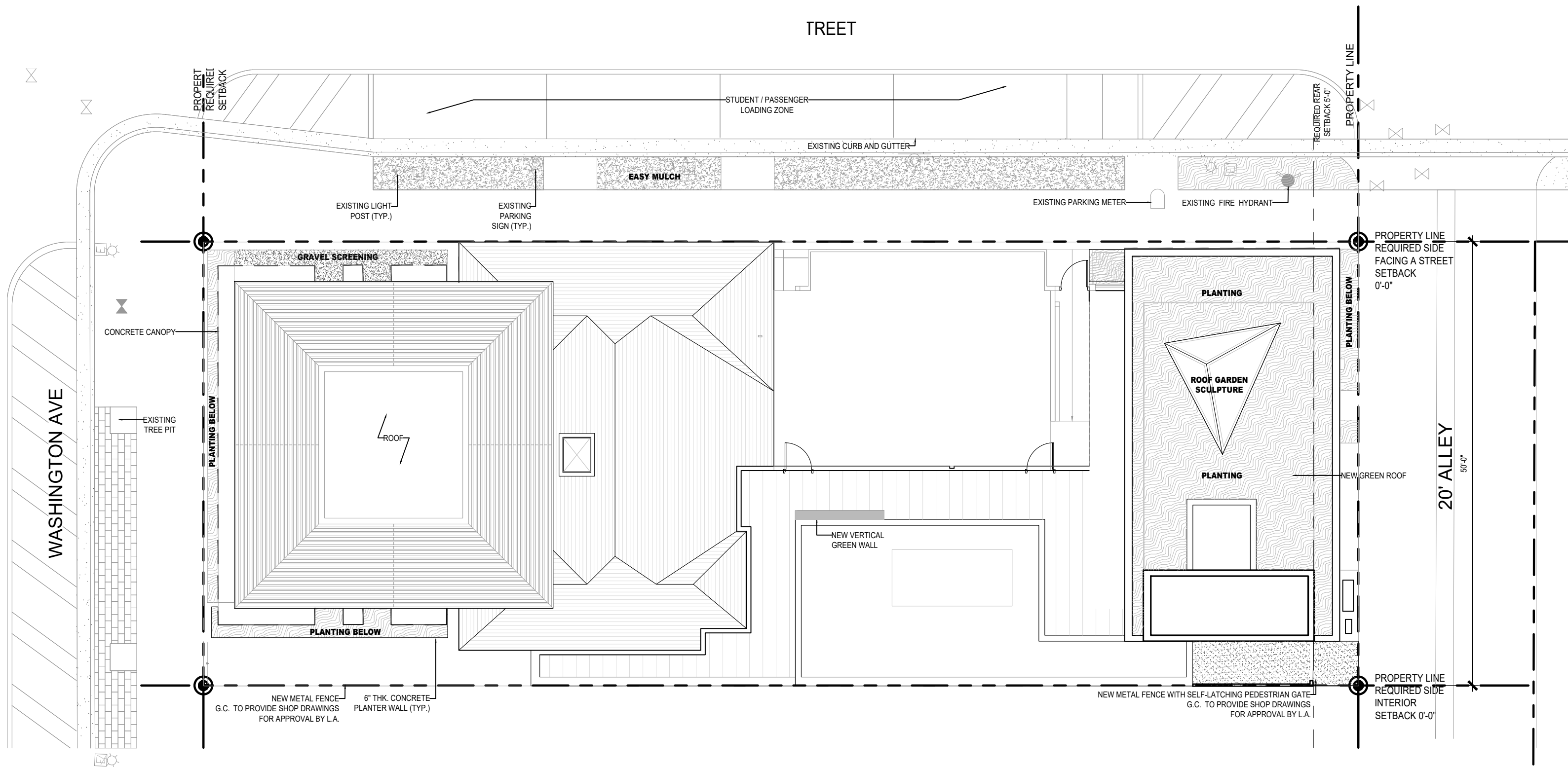
TW	TOP OF WALL	OA	OVERALL PLAN
TPW	TOP OF PLANTER WALL	CONC	CONCRETE
TB	TOP OF BENCH	LA	LANDSCAPE ARCHITECT
TC	TOP OF CURB	ARCH	ARCHITECT
FFE	FINISH FLOOR ELEVATION	STRUCT	STRUCTURE / STRUCTURAL
AFF	ABOVE FINISH FLOOR	ENG	ENGINEER
P.L.	PROPERTY LINE	DWGS	DRAWINGS
TG	TOP OF GRADE	TYP	TYPICAL
M	MONUMENT LINE	EXST	EXISTING
CL	CENTER LINE	HSCP	HARDSCAPE
ML	MATCH LINE	LSCP	LANDSCAPE
EL	ENLARGED PLAN	PLNT	PLANTING

GRAPHIC LEGEND



NATURALFICIAL
LANDSCAPE ARCHITECTURE + DESIGN
6915 Red Road, Suite 224
Coral Gables, FL 33143
O: 786.717.6564 / M: 305.321.2341
www.naturalficial.com
FIRM REG. NO. LC26000548

L-1.11 ROOF LEVEL HARDSCAPE PLAN



L-3.00 TREE DISPOSITION PLAN

2ND STREET

PROPERTY LINE

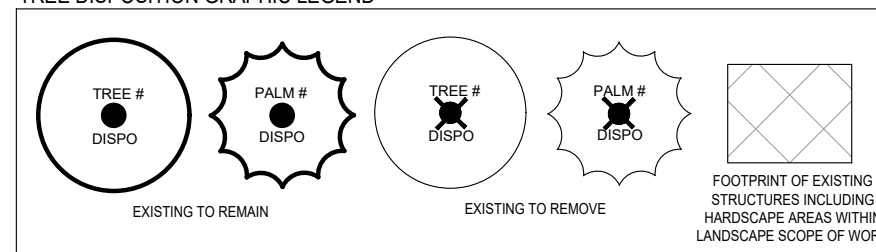
PROPERTY LINE
REQUIRED SIDE
FACING A STREET
SETBACK
0'-0"

20' ALLEY

PROPERTY LINE
REQUIRED SIDE
INTERIOR
SETBACK 0'-0"

161 WASHINGTON AVE - TREE DISPOSITION LIST: 2019.04.12									
KEY #	BOTANICAL NAME	COMMON NAME	DISPOSITION					RELOCATE ON SITE	NOTES
			DBH (FT.)	HT. (FT.)	SPD. (FT.)	REMAIN	REMOVE		
1	<i>Schefflera actinophylla</i>	Umbrella Tree		25'	8'			X	
2	<i>Quercus virginiana</i>	Oak	0.8'	20'	15'	X			On (R.O.W)
3	<i>Quercus virginiana</i>	Oak	0.8'	20'	15'	X			On (R.O.W)
4	<i>Veitchia merrillii</i>	Christmas Palm	0.5'	15'	6'	X			On (R.O.W)
5	<i>Veitchia merrillii</i>	Christmas Palm	0.5'	15'	6'	X			On (R.O.W)
6	<i>Cocos nucifera</i>	Coconut Palm	0.6'	20'	8'	X			On (R.O.W)
7	<i>Cocos nucifera</i>	Coconut Palm	0.6'	20'	8'	X			On (R.O.W)
8	<i>Plumeria pudica</i>	Bridal Bouquet	0.3'	12'	3'			X	
9	<i>Plumeria pudica</i>	Bridal Bouquet	0.3'	12'	3'			X	
10	<i>Plumeria pudica</i>	Bridal Bouquet	0.3'	12'	3'			X	
11	<i>Dypsis lutescens</i>	Areca Palm	1.5'	13'	6'			X	
12	<i>Veitchia merrillii</i>	Christmas Palm	0.6'	20'	5'			X	
13	<i>Veitchia merrillii</i>	Christmas Palm	0.6'	20'	5'			X	
14	<i>Musa acuminata</i>	Banana Tree	1.5'	20'	6'			X	
15	<i>Musa acuminata</i>	Banana Tree	1.5'	20'	6'			X	
SUMMARY									
Total Number of Trees / Palms to Remain: 6 on R.O.W									
Total Number of Trees / Palms to Remove: 9									
Total Number of Trees / Palms to Relocate: 0									
MITIGATION TABLE									
Total Mitigation Required: 231 square feet (Estimate Provided by Urban Forestry Reviewer)									
Canopy provided towards mitigation: (1) Category One Tree, (3) Category Four Palms. Please refer to sheet L-3.10 for plant specifications									
Mitigation Calculation: 300 + 150 = 1050 Sq. Ft. of Mitigated Canopy									

TREE DISPOSITION GRAPHIC LEGEND



224 2nd St Planning Board Revised Final Submittal

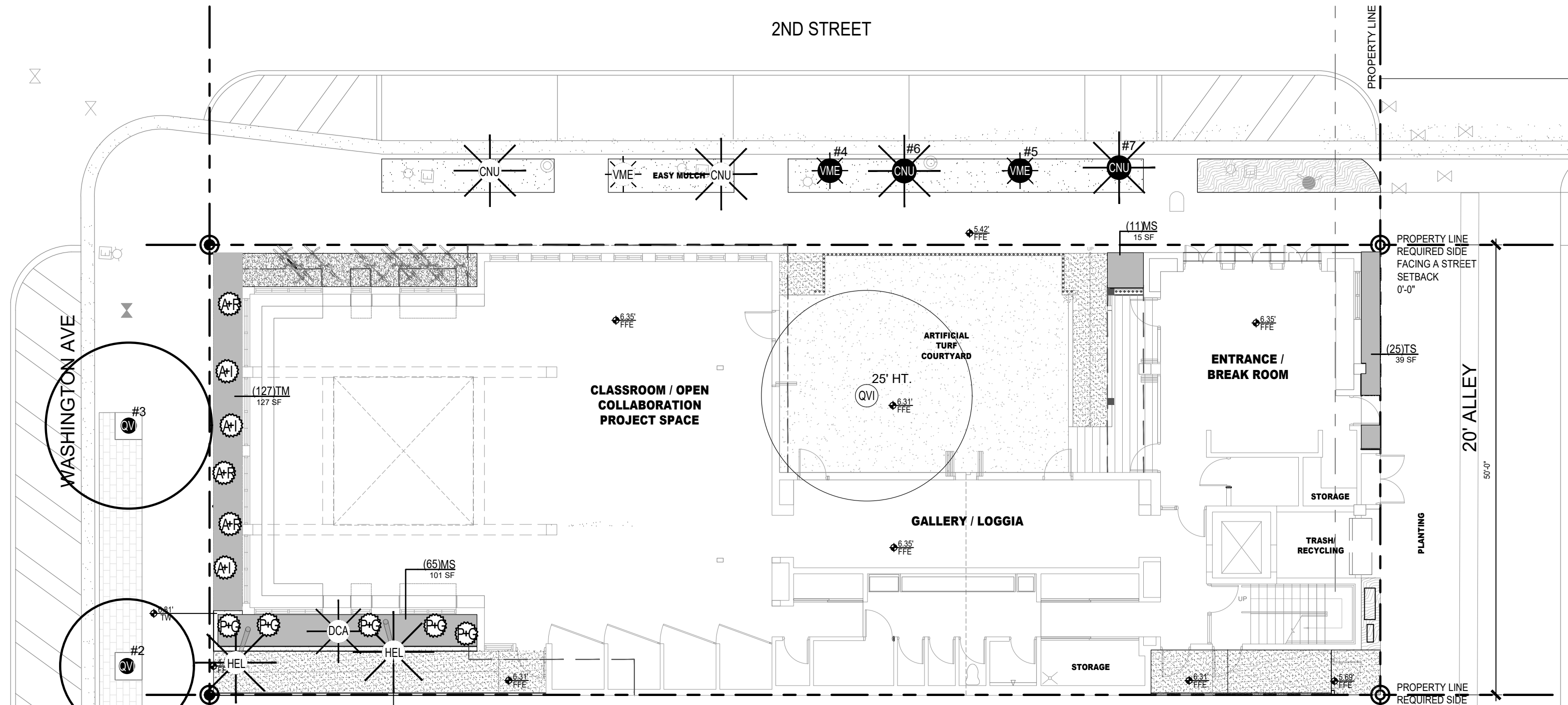
©2019 Shulman + Associates

04/26/2019



NATURALFICIAL
LANDSCAPE ARCHITECTURE + DESIGN
6915 Red Road, Suite 224
Coral Gables, FL 33143
O: 786.717.6564 / M: 305.321.2341
www.naturalficial.com
FIRM REG. NO. LC26000548

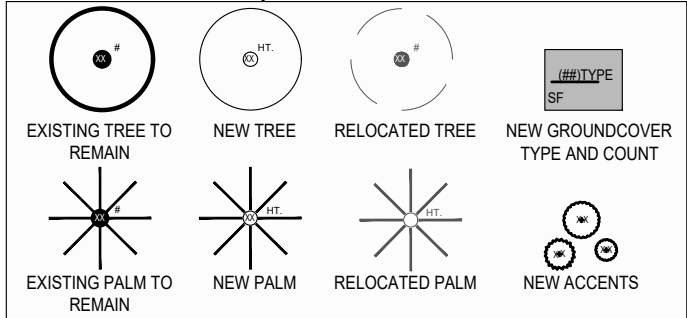
L-3.10 GROUND LEVEL LANDSCAPE PLAN



SAGUI PALMS TO HAVE A CURVED TRUNK AND TO BE LEANED AWAY FROM BUILDING PER PLAN

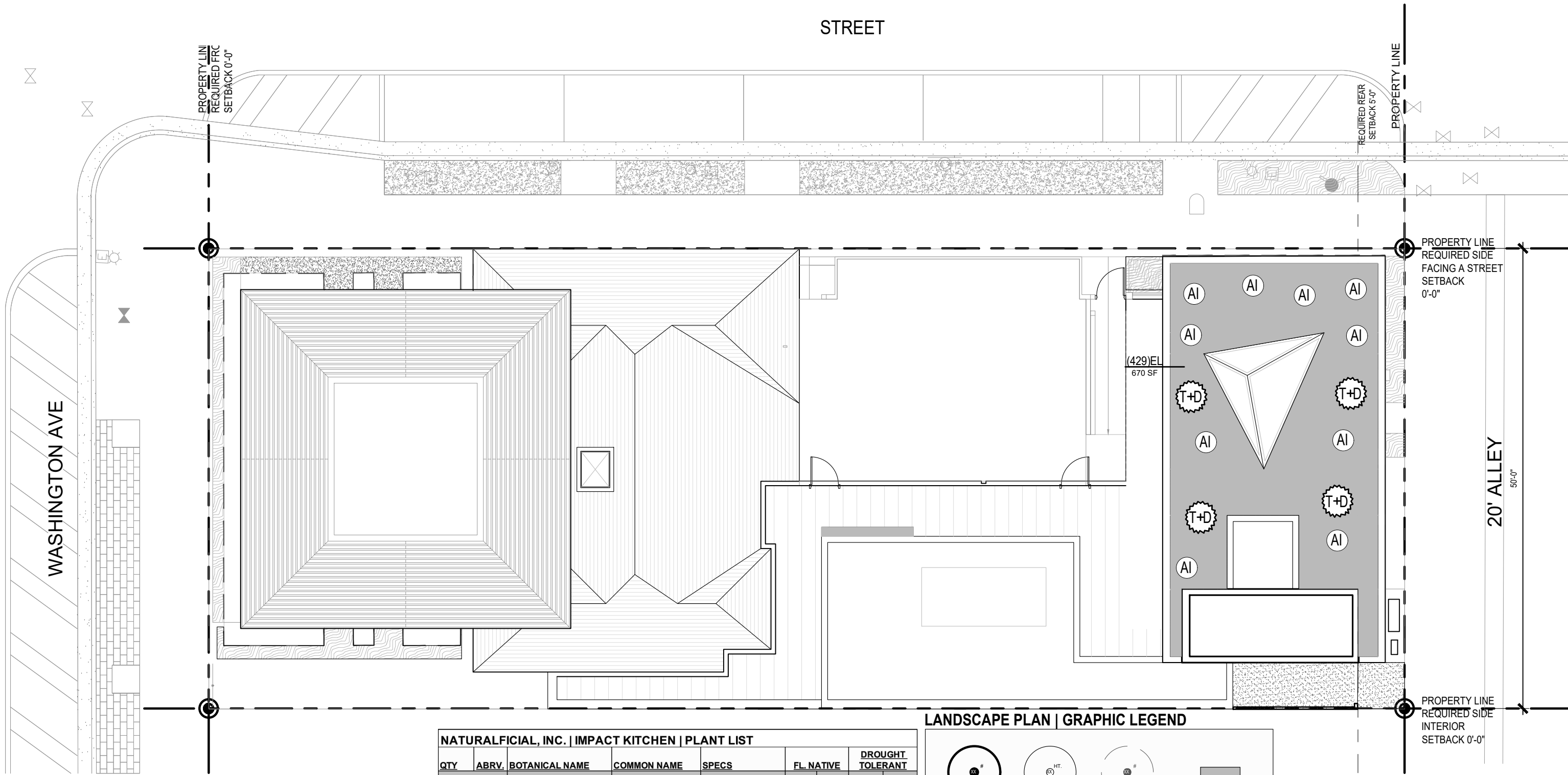
NATURALFICIAL, INC. 224 2ND STREET PLANT LIST: 2019.04.12.									
QTY	ABRV.	BOTANICAL NAME	COMMON NAME	SPECS	FL. NATIVE		DROUGHT TOLERANT		CANOPY MITIGATION CREDIT (\$Q.FT.)
					YES	NO	YES	NO	
TREES									
1	QVI	Quercus virginiana	Oak Tree	25' ht. x 15" sp.	X		X		300
PALMS									
2	CNUJ	Coccothrinax nucifera	Coconut Palm (ROW)	20'-22'		X	X		
2	HEL	Heliconia elata	Sagitt Palm	20' ht., min.6' CT		X	X		100
1	VME	Veitchia merillii	Christmas Palm (ROW)	18'-20'		X	X		
1	DCA	Dypsis cabadae	Cabada Palm Cluster	15' ht., min.6' CT		X	X		50
ACCENTS									
3	AI	Alcantarea imperialis	Same	7G		X	X		X
3	AR	Alcantarea reginae	Silver Form Bromeliad	7G		X	X		X
6	PG	Philodendron pilgatum	Same	7G		X	X		X
GROUNDCOVERS									
127	TM	Tradescantia microfolia	Argentine Ivy	1G @ 12" O.C.	X		X		X
25	TS	Tradescantia spathulacea	Oyster Plant	3G @ 15" O.C.		X	X		X
84	MS	Microsorium scolopendrium	Wart Fern	3G @ 15" O.C.		X	X		X
Total Canopy Credits Required (Estimate By Urban Forester) 231 S.Q.									
Total Canopy Credits Provided Towards Mitigation									450

LANDSCAPE PLAN | GRAPHIC LEGEND



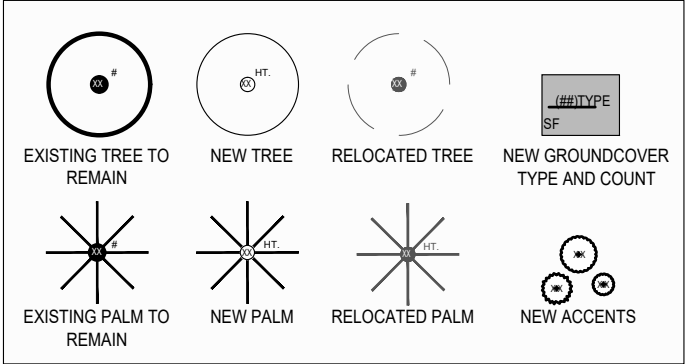
NOTE:
REFER TO SHEET L-0.00 FOR CITY OF MIAMI BEACH LANDSCAPE LEGEND

L-3.11 ROOF LEVEL LANDSCAPE PLAN



NATURALFICIAL, INC. IMPACT KITCHEN PLANT LIST								
QTY	ABRV.	BOTANICAL NAME	COMMON NAME	SPECS	FL. NATIVE		DROUGHT TOLERANT	
ACCENTS					YES	NO	YES	NO
10	AI	<i>Alcantarea imperialis</i>	Same	7G		X	X	
4	TD	<i>Tripsacum dactyloides</i>	Fakahatchee Grass	7G		X	X	
GROUNDCOVERS								
429	EL	<i>Ernodea littoralis</i>	Golden Creeper	3G @ 15" O.C.	X		X	

LANDSCAPE PLAN | GRAPHIC LEGEND



NOTE:
REFER TO SHEET L-0.00 FOR CITY OF
MIAMI BEACH LANDSCAPE LEGEND

L-3.20 GENERAL PLANTING DETAILS

GENERAL PLANTING NOTES AND SPECIFICATIONS:

GENERAL

- EXISTING TREES DESIGNATED TO REMAIN SHALL BE PROTECTED DURING ALL CONSTRUCTION PHASES. ANY TREES DESIGNATED TO REMAIN WHICH ARE SCARRED OR DESTROYED WILL BE REPLACED AT THE CONTRACTORS EXPENSE, WITH SIMILAR SPECIES, SIZE AND QUALITY.
- EXISTING TREES DESIGNATED TO BE STORED OFF-SITE SHALL BE PROTECTED AND CARED FOR ACCORDING TO INDUSTRY STANDARD. ANY TREES OR SHRUBS SCARRED OR DESTROYED WILL BE REPLACED AT THE CONTRACTORS EXPENSE, WITH SIMILAR SPECIES, SIZE AND QUALITY.
- LANDSCAPE CONTRACTOR SHALL BECOME FAMILIAR WITH ALL UNDERGROUND UTILITIES OR STRUCTURES PRIOR TO DIGGING. LANDSCAPE CONTRACTOR SHALL REPAIR ALL DAMAGE TO UTILITIES, AND/OR CONSTRUCTION CAUSED BY CONSTRUCTION OR DIGGING, AT NO COST TO THE OWNER.
- ALL PLANT MATERIALS SHALL BE GUARANTEED FOR A PERIOD OF 12 MONTHS AFTER DATE OF SUBSTANTIAL COMPLETION.
- LANDSCAPE CONTRACTOR SHALL VERIFY ALL ESTIMATED QUANTITIES OF MATERIAL SHOWN ON THE DRAWINGS PRIOR TO SUBMITTING HIS BID. PLANTING PLAN TO TAKE PRECEDENCE OVER PLANT LIST.
- EXISTING PLANT MATERIAL NOT SHOWN ON THE PLAN AND IN CONFLICT WITH NEW PLANTING SHALL BE EVALUATED AT THE TIME OF NEW PLANTING INSTALLATION BY THE LANDSCAPE ARCHITECT.
- ALL BUILDING CONSTRUCTION MATERIAL AND FOREIGN MATERIAL SHALL BE REMOVED FROM PLANTING AREAS AND REPLACED WITH 80/20 MIX FILL SOIL, OR AS PER SPECIFICATIONS. ALL ISLANDS IN PARKING LOTS AND AROUND BUILDINGS SHALL BE EXCAVATED TO A DEPTH OF 3' MIN. AND REPLACED WITH 80/20 PLANT MIX, OR AS PER SPECIFICATIONS.
- ALL PLANT MATERIAL SYMBOLS SHOWN ON LANDSCAPE PLAN SHALL BE CONSIDERED DIAGRAMMATIC AND SHOULD BE ADJUSTED IN THE FIELD BY CONTRACTOR TO AVOID ALL UTILITIES AND ALL OTHER OBSTRUCTIONS AFTER CONSULTING THE LANDSCAPE ARCHITECT.
- ALL SIZES SHOWN FOR PLANT MATERIAL ON THE PLAN AND PLANT LIST ARE TO BE CONSIDERED MINIMUM. ALL PLANT MATERIAL MUST MEET OR EXCEED THESE MINIMUM REQUIREMENTS FOR BOTH HEIGHT AND SPREAD. ANY OTHER REQUIREMENTS FOR SPECIFIC SHAPE OR EFFECT AS NOTED ON THE PLAN SHALL ALSO BE REQUIRED FOR ACCEPTANCE. ALL TREES TO HAVE SINGLE TRUNK, UNLESS OTHERWISE NOTED ON THE PLANS OR PLANT LIST.
- SITE PREPARATION SHALL INCLUDE THE ERADICATION AND REMOVAL OF ANY WEEDS AND/OR GRASS, AS WELL AS CLEAN-UP OF ANY DEAD MATERIAL, AND FINISH GRADING AS PER THE SPEC.
- THE LANDSCAPE CONTRACTOR SHALL AT ALL TIMES KEEP THE JOB SITE CLEAN AND FREE FROM ACCUMULATION OF WASTE MATERIAL, DEBRIS, AND RUBBISH.
- THE LANDSCAPE CONTRACTOR SHALL EXERCISE CAUTION TO PROTECT ANY NEW HARDWARE, CONSTRUCTION OR IRRIGATION. ANY DAMAGE SHALL BE REPLACED OR REPAIRED TO THE ORIGINAL STATE BY THE LANDSCAPE CONTRACTOR AT NO ADDITIONAL COST TO THE OWNER.
- ALL PLANT MATERIAL TO BE FLORIDA #1 OR BETTER, AS DEFINED BY THE FLORIDA DEPARTMENT OF AGRICULTURES CODES AND STANDARDS FOR NURSERY PLANTS PART I AND II.
- MULCH ALL PLANTING AREAS WITH SHREDED ORGANIC MULCH TO A MINIMUM DEPTH OF 2" WITH THE EXCEPTION OF BEACH PLANTING.
- ALL PLANTING AREAS WITHIN LIMIT OF WORK SHALL BE 100% FULLY IRRIGATED. THE IRRIGATION CONTRACTOR AWARDED THE BID SHALL COMPLY WITH THE PROPOSED IRRIGATION DESIGN.
- ON-SITE LAYOUT OF PLANT MATERIAL MUST BE COORDINATED WITH THE LANDSCAPE ARCHITECT PRIOR TO INSTALLATION. I.A. TO BE GIVEN A MIN. OF (1) WEEK NOTICE TO REVIEW PRIOR TO IMPLEMENTATION.
- LANDSCAPE CONTRACTOR TO INCLUDE REMOVAL, CORRECTIVE PRUNING AND OR REPLACEMENT. ANY CORRECTIVE ACTIONS REQUIRED SHALL BE PERFORMED OR DIRECTED BY AN ISA OR ASCA CERTIFIED ARBORIST IN ACCORDANCE WITH FLORIDA AND DADE COUNTY CODE, AND A-300 (PART II) PRUNING STANDARDS AND OR AN ISSUED ERM TREE OR ENVIRONMENTAL PERMIT.
- TREE PROTECTION BARRIERS MUST BE INSTALLED AT THE DRP LINES OF ALL TREES AND PALMS TO REMAIN OR BE RELOCATED PRIOR TO THE START OF CONSTRUCTION ACTIVITIES ON-SITE. SHALL REMAIN IN PLACE UNTIL CONSTRUCTION HAS COMPLETED.
- MULCH SHALL NOT BE APPLIED WITHIN 6" OF ANY TREE OR PALM TRUNKS THAT ARE INSTALLED OR INCORPORATED INTO THE PROJECT. FOR ROW TREES/PALMS, PLEASE UTILIZE AMERGRROW (PREMIUM PINEBARK BROWN) SHREDED MULCH OR A CITY APPROVED ALTERNATIVE.
- SHOULD ANY CORRECTIVE STRUCTURAL PRUNING BE NECESSARY FOR TREES PROPOSED TO REMAIN ON SITE, DUE TO CLEARANCE, SAFETY OR FOR CONSTRUCTION RELATED REASONS THE PRUNING SHALL BE PERFORMED OR DIRECTED BY AN ISA OR ASCA CERTIFIED ARBORIST IN ACCORDANCE WITH THE LATEST VERSION OF THE ANSI A-300 PRUNING STANDARDS AND GOOD HORTICULTURAL PRACTICES. THE CITY URBAN FORESTER SHALL BE PROVIDED WITH A WRITTEN COPY OF THE PROPOSED PRUNING PLAN INCLUDING THE REASONS WHY PRUNING IS NECESSARY, PRIOR TO THE PRUNING ACTIVITIES TAKING PLACE.
- CARE SHALL BE TAKEN TO AVOID UTILITY OR CONSTRUCTION TRENCHING THROUGH EXISTING TREE OR PALM DRIP LINES OF TREES SLATED TO REMAIN IN PLACE OR BE RELOCATED. IF CONSTRUCTION REQUIRES THE CUTTING OF ANY ROOTS WITH A DIAMETER OF 2" OR GREATER, ROOTS SHALL BE CLEANLY CUT WITH A SHARP TOOL, AS DIRECTED BY AN ISA CERTIFIED ARBORIST, AND IN ACCORDANCE WITH THE ANSI A-300 STANDARDS. CUT ROOTS SHOULD BE IMMEDIATELY COVERED WITH SOIL TO PREVENT DRYING. ROOTS SHOULD NOT BE TORN OR BROKEN BY HEAVY EQUIPMENT. SHREDED, RAGGED OR BROKEN ROOTS ENDS SHOULD BE NOTED IN WRITING AND AN ARBORIST SHOULD BE CONSULTED PRIOR TO ANY ROOT PRUNING TAKING PLACE.

HANDLING AND TRANSPORTATION

- TREES/PALMS SHALL BE PROPERLY HANDLED DURING EXCAVATION, MOVING, STORAGE, RELOCATION, AND REPLANTING. DO NOT SCAR OR OTHERWISE DAMAGE TRUNKS AND BRANCHES, AND AVOID BREAKING LIMBS, BRANCHES, AND FRONDS. DAMAGE TO TREE/PALM MAY BE CAUSE FOR ITS REJECTION, AND MAY REQUIRE MITIGATION REPLACEMENT.
- CONTRACTOR SHALL BE RESPONSIBLE FOR THE MANUAL WATERING OF ALL RELOCATED TREES/PALMS DURING MAINTENANCE PERIOD, UNTIL FINAL ACCEPTANCE OF ALL WORK BY THE LANDSCAPE ARCHITECT AND/OR CLIENT.
- LANDSCAPE CONTRACTOR SHALL BE RESPONSIBLE FOR INSTALLING AND MAINTAINING TREE/PALM PROTECTION. INSTALL BARRICADE OF GALVANIZED WELDED WIRE FABRIC OR PLASTIC MESH TO ENCOMPASS THE DRIP LINE OF THE TREE/PALM. BARRICADE SHALL BE PLUMB, TAUT, AND STURDY. BARRICADE TO BE LEFT UP AND MAINTAINED, UNTIL DIRECTED TO REMOVE BY LANDSCAPE ARCHITECT.

TREE PROTECTION MATERIALS

- BARRICADE SHALL BE GALVANIZED AND WELDED WIRE FABRIC, 1X1" MESH, 063, 48" IN HEIGHT RECOMMENDED CONTACT:
Wire Cloth Man
7158 12th Chan N.
Largo, FL 33073
PH: 1888.947.3256
FX: 727.324.4000
- POSTS & RAIL, METAL POST, SUFFICIENT TO HOLD FABRIC PLUMB AND TAUT
- ACCESS: PROVIDE HINGED, LATCHING GATE.
- METAL GATE: SHALL PERMIT FREE PASSAGE OF WATER, AIR AND SHALL ACCEPT CONSTRUCTION TRAFFIC WITHOUT EXCESSIVE DEFLECTION.

WARRANTY

- LANDSCAPE CONTRACTOR SHALL PROVIDE A MINIMUM OF ONE (1) YEAR GUARANTEE FOR ALL RELOCATED TREES/PALMS AFTER FINAL ACCEPTANCE BY LANDSCAPE ARCHITECT AND/OR CLIENT.
- LANDSCAPE CONTRACTOR SHALL REMOVE COMPLETELY AND DISPOSE OF OFF-SITE, ANY RELOCATED TREE/PALM THAT FAILS TO THRIVE AS DETERMINED BY THE LANDSCAPE ARCHITECT.
- FOR ANY RELOCATED TREE/PALM REMOVED DUE TO ITS FAILURE TO THRIVE, LANDSCAPE CONTRACTOR SHALL BE RESPONSIBLE FOR REPLACING AND INSTALLING WITH A SPECIMEN OF EQUAL OR GREATER SPECIFICATION OF ORIGINAL, REPLACEMENT MATERIAL, SHALL BE APPROVED BY LANDSCAPE ARCHITECT PRIOR TO PROCUREMENT, PREPARATION OR INSTALLATION.

TREE / PALM RELOCATION NOTES

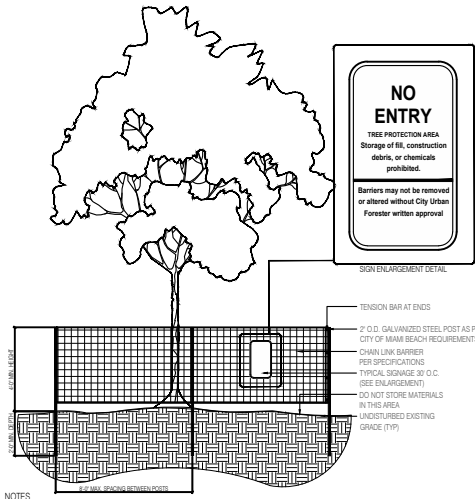
- VERIFY AND INSURE ALL TREE/PALMS IDENTIFIED ON THE CONSTRUCTION DRAWINGS AND THOSE TAGGED IN THE FIELD CORRESPOND AS TO NUMBER AND DESCRIPTION. ANY DISCREPANCIES SHALL BE BROUGHT TO THE ATTENTION OF THE LANDSCAPE ARCHITECT IMMEDIATELY, PRIOR TO PREPARATION.
- LANDSCAPE CONTRACTOR SHALL BE RESPONSIBLE FOR TREE/PALM PROTECTION OF ALL VERIFIED MATERIAL. INSTALL BARRICADE OF GALVANIZED WELDED WIRE FABRIC OR PLASTIC MESH TO ENCOMPASS THE DRIP LINE OF THE TREE/PALM. BARRICADE TO BE REMOVED WHEN DIRECTED BY LANDSCAPE ARCHITECT.
- TREE ROOT BALL SHALL BE ROOT PRUNED 50% (EQUALLY AROUND TREE) 60 DAYS PRIOR TO TRANSPLANT. THE REMAINING 50% TO BE PRUNED 30 DAYS PRIOR TO TRANSPLANTING.
- PALMS TO BE RELOCATED MAY BE IMMEDIATELY RELOCATED AFTER DIGGING.
- ROOTS TO BE PRUNED WITH CLEAN, SHARP TOOLS. ROOTS ONE (1) INCH AND LARGER IN DIAMETER SHALL BE NEATLY AND CLEANLY CUT WITH A HAND SAW OR OTHER APPROVED CUTTING IMPLEMENT AS DIRECTED BY AN ISA OR ASCA CERTIFIED ARBORIST.
- LANDSCAPE CONTRACTOR TO APPLY MYCORRHZA APPLICATION TO ROOTS DURING ROOT PRUNING AND DIGGING. OPERATIONS. ALL PRUNING TO BE REVIEWED AND APPROVED BY LANDSCAPE ARCHITECT PRIOR TO PRUNING.
- DEAD WOOD, CROSSING BRANCHES AND GENERAL CANOPY PRUNING SHALL BE PERFORMED OR DIRECTED BY AN ISA OR ASCA CERTIFIED ARBORIST IN ACCORDANCE WITH THE LATEST VERSION OF THE ANSI A-300 PRUNING STANDARDS AND GOOD HORTICULTURAL PRACTICES IMMEDIATELY AFTER COMPLETION OF ROOT PRUNING OF EACH SPECIMEN TO BE RELOCATED. ALL PRUNING TO BE REVIEWED AND APPROVED BY LANDSCAPE ARCHITECT PRIOR TO PRUNING.
- ROOT BALL SIZE TABLE:
(NOTE: ROOT BALL SIZES SHALL EXCEED MINIMUM STANDARDS SET FORTH IN "SPACES AND STANDARDS FOR NURSERY PLANTS, PART II, PALMS AND TREES, FLORIDA DEPARTMENT OF AGRICULTURE")

TREE/PALM CALIPER	MINIMUM ROOT BALL DIAMETER
1" - 1 1/2"	16"
1 1/2" - 1 3/4"	20"
1 3/4" - 2"	24"
2" - 2 1/4"	28"
2 1/4" - 2 1/2"	32"
2 1/2" - 3"	36"
3" - 3 1/4"	40"
3 1/4" - 4"	44"
4" - 4 1/2"	48"
4 1/2" - 5"	48"
5" - 5 1/2"	48"

- THE ROOT BALL OF LARGER CALIPER SIZES SHALL BE INCREASED PROPORTIONALLY AT THREE (3) INCHES OF ROOT BALL DIAMETER FOR EVERY INCREASE OF ONE (1) INCH IN CALIPER OR FRACTION THEREOF.
- MAINTAIN COMPACT ROOT BALLS. ROOT BALLS SHALL BE COMPLETELY ENCLOSED WITHIN A BURLAP COVERS OR STRETCH WRAP AS COMMONLY USED WITHIN THE HORTICULTURAL INDUSTRY, IN TWO COMPLETE LAYERS.
- ALL TREES TO BE FLOODED FOR FIVE (5) DAYS PRIOR TO TRANSPLANT.
- ALL PITS TO BE FILLED THE SAME DAY AND WITH CLEAN FILL IN 18 INCH LIFTS/LAYERS. EACH THEN COMPACTED BEFORE A SUBSEQUENT 18" LIFT/LAYER IS PLACED. REPEAT UNTIL BACKFILL IS FLUSH WITH SURROUNDING GRADE.
- CORRECT ALL PROBLEMS RELATED TO SETTLEMENT, EROSION, OR OTHER DISTRESS OF EXCAVATED/BACKFILLED PIT FROM WHICH TREE/PALM HAS BEEN REMOVED, INCLUDING THE COMPLETE AND THOROUGH REMOVAL OF ALL RESIDUAL ROOTS, STUMPS AND PORTIONS AND PARTS THEREOF.
- RESTORE THE SURFACE WITH MATERIAL TO MATCH ADJACENT AREAS. MATERIAL TO BE APPROVED BY LANDSCAPE ARCHITECT CONTRACTOR TO PROVIDE A MINIMUM ONE YEAR WARRANTY ON SETTLEMENT AND PLANT MATERIAL.
- LANDSCAPE CONTRACTOR IS RESPONSIBLE FOR ALL MATERIAL INCLUDING BUT NOT LIMITED TO BACKFILL MATERIAL, PROTECTION FENCING, FLAGGING, ROOT BALL BURLAP OR SHRINK WRAP.

INSTALLATION

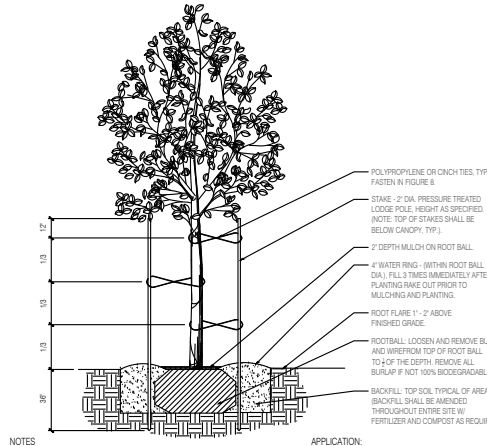
- VERIFY ALL UNDERGROUND CONSTRUCTIONS OR OBSTRUCTIONS (UTILITIES, SEPTIC SYSTEMS, ETC.) ARE IDENTIFIED, LOCATED AND CLEARLY MARKED AS APPROPRIATE PRIOR TO EXCAVATION OF PLANTING PITS FOR RELOCATED TREES AND PALMS. ANY UNKNOWN OBJECTS SHALL BE BROUGHT TO THE ATTENTION OF THE LANDSCAPE ARCHITECT IMMEDIATELY, PRIOR TO INSTALLING AND BACKFILLING.
- LANDSCAPE CONTRACTOR TO FLAG ALL PROPOSED PLANT LOCATIONS FOR LANDSCAPE ARCHITECTS APPROVAL PRIOR TO INSTALLATION.
- PLANTING PITS SHALL BE A MINIMUM OF TWO (2) TIMES LARGER IN DIAMETER AND ONE AND A HALF (1-1/2) TIMES LARGER IN DEPTH THAN THE ROOT BALL, ROUGHEN EDGES AND BOTTOM OF PIT.
- AFTER EACH PLANTING PIT IS EXCAVATED, PLACE SUFFICIENT PLANTING MIX IN BOTTOM OF EXCAVATION, AND SEAT PLANT, INSURING TOP OF ROOT BALL IS FLUSH WITH IMMEDIATELY ADJACENT FINAL OR PROPOSED GRADE.
- LANDSCAPE CONTRACTOR TO INSURE ALL PLANT MATERIAL IS INSTALLED AT THE CORRECT ELEVATION. REFER TO GRADING PLAN.
- LANDSCAPE CONTRACTOR TO INSURE ALL ROOT FLARES ARE EXPOSED.
- CENTER EACH RELOCATED TREE/PALM IN ITS PLANTING PIT AND BACKFILL WITH SPECIFIED PLANTING MIX.
- PLACE PLANTING MIX IN 12 INCH LIFTS/LAYERS AROUND ROOT BALL AND COMPACT UNTIL ALL VOIDS ARE FILLED WITH COMPACTED PLANTING MIX.
- BUILD SOIL SAUCER OF MOUNDED EXCAVATED SOIL AROUND PERIMETER OF EACH PLANTING PIT TO FORM WATERING BASIN. MULCH TO A DEPTH OF 3".



- NOTES
- TREE BARRICADE APPROVAL. OBTAIN CITY APPROVAL OF TREE BARRICADES BEFORE BEGINNING CLEARING OPERATIONS OR ANY SITE DEVELOPMENT.
 - TREE PROTECTION FENCE SHALL BE INSTALLED PRIOR TO ANY SITE WORK, CLEARING, OR DEMOLITION.
 - THE TREE PROTECTION BARRICADE SHALL BE INSTALLED PER CITY OF MIAMI BEACH CODE CHAPTER 46, AND WILL BE AT LEAST FOUR (4) FEET HIGH. THE BARRIER SHALL BE CONSTRUCTED OF CONTINUOUS 2" CHAIN LINK FENCE BARRIED WITH GALVANIZED STEEL POSTS AT (8) FOOT SPACING, OR OF 2X4 POSTS WITH THREE EQUALLY SPACED 2X4 RAILS.
 - AMAZON HOUSE AND RUBBER 8, 1 1/2" AIR HOSE #W1146 OR APPROVED EQUAL TO COVER 10 GAUGE WIRE.
 - 11 GAUGE GALVANIZED WIRE, WIRE PRODUCT 8, OR APPROVED EQUAL.
 - 1 2" X 4" X 4" NON TREATED LANDSCAPE TIMBER AS SPECIFIED, FASTENED WITH 4-3/4" DECK SCREWS TO 2" X 4" X 8" P.T. LANDSCAPE TIMBERS.
 - 1 1/2" MALLEABLE CLAMP FASTENER FOR WIRE SUPPLIER, FLOOR WIRE 8" OR APPROVED EQUAL.

1 COMB TREE PROTECTION DETAIL

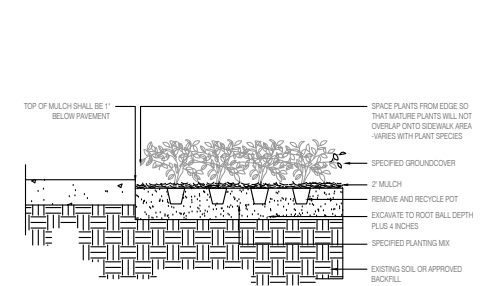
SCALE: N.T.S.



- NOTES
- PRUNING: REMOVE ANY BROKEN BRANCHES.
 - NO MULCH WITHIN 4" OF TRUNK TIP.
 - USE THREE LODGE POLES FOR ADDED STABILITY.

4 SMALL TREE PLANTING AND STAKING DETAIL

SCALE: N.T.S.



- NOTES
- SEE PLANTING PLAN FOR SPACING.

7 GROUNDCOVER PLANTING DETAIL

SCALE: N.T.S.



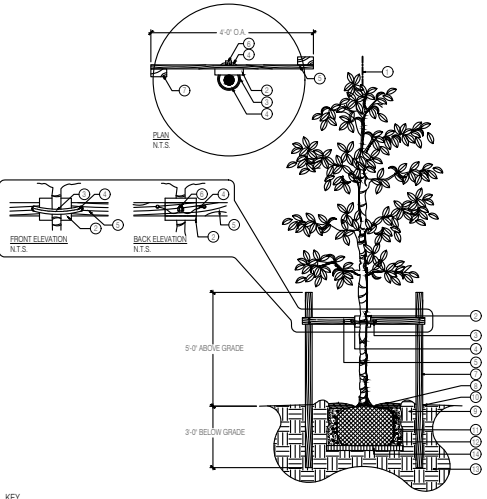
9 ROOT BARRIER DETAIL

SCALE: N.T.S.



11 PLANT SPACING DETAIL

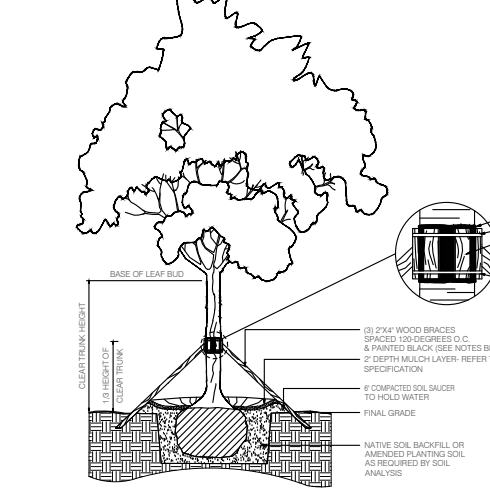
SCALE: N.T.S.



- KEY
- SET TREE PLUMB IN PLANTING PIT.
 - PROTECT TREE TRUNK WITH 1 NOMAD 8" STYROFOAM PADDING GUARDS, #8048048, AS SPECIFIED, OR APPROVED EQUAL.
 - THE TREE PROTECTION BARRICADE SHALL BE INSTALLED PER CITY OF MIAMI BEACH CODE CHAPTER 46, AND WILL BE AT LEAST FOUR (4) FEET HIGH. THE BARRIER SHALL BE CONSTRUCTED OF CONTINUOUS 2" CHAIN LINK FENCE BARRIED WITH GALVANIZED STEEL POSTS AT (8) FOOT SPACING, OR OF 2X4 POSTS WITH THREE EQUALLY SPACED 2X4 RAILS.
 - AMAZON HOUSE AND RUBBER 8, 1 1/2" AIR HOSE #W1146 OR APPROVED EQUAL TO COVER 10 GAUGE WIRE.
 - 11 GAUGE GALVANIZED WIRE, WIRE PRODUCT 8, OR APPROVED EQUAL.
 - 1 2" X 4" X 4" NON TREATED LANDSCAPE TIMBER AS SPECIFIED, FASTENED WITH 4-3/4" DECK SCREWS TO 2" X 4" X 8" P.T. LANDSCAPE TIMBERS.
 - 1 1/2" MALLEABLE CLAMP FASTENER FOR WIRE SUPPLIER, FLOOR WIRE 8" OR APPROVED EQUAL.

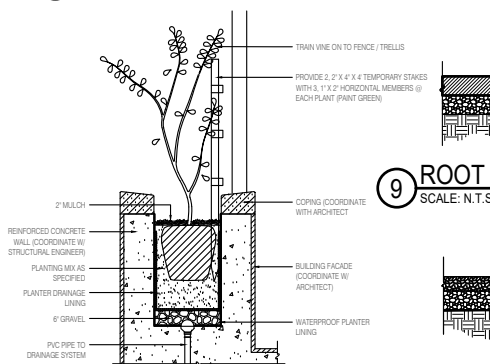
2 MEDIUM TREE PLANTING & STAKING DETAIL

SCALE: N.T.S.



5 LARGE TREE PLANTING AND STAKING DETAIL

SCALE: N.T.S.



8 VINE PLANTING DETAIL

SCALE: N.T.S.



10 GRAVEL BED DETAIL

SCALE: N.T.S.



11 PLANT SPACING DETAIL

SCALE: N.T.S.

12 SHRUB SPACING

SCALE: N.T.S.

13 ROOT BARRIER DETAIL

SCALE: N.T.S.

14 ROOT BARRIER DETAIL

SCALE: N.T.S.

15 ROOT BARRIER DETAIL

SCALE: N.T.S.

16 ROOT BARRIER DETAIL

SCALE: N.T.S.

17 ROOT BARRIER DETAIL

SCALE: N.T.S.

18 ROOT BARRIER DETAIL

SCALE: N.T.S.

19 ROOT BARRIER DETAIL

SCALE: N.T.S.

20 ROOT BARRIER DETAIL

SCALE: N.T.S.

21 ROOT BARRIER DETAIL

SCALE: N.T.S.

22 ROOT BARRIER DETAIL

SCALE: N.T.S.

23 ROOT BARRIER DETAIL

SCALE: N.T.S.

24 ROOT BARRIER DETAIL

SCALE: N.T.S.

25 ROOT BARRIER DETAIL

SCALE: N.T.S.

26 ROOT BARRIER DETAIL

SCALE: N.T.S.

27 ROOT BARRIER DETAIL

SCALE: N.T.S.

28 ROOT BARRIER DETAIL

SCALE: N.T.S.

29 ROOT BARRIER DETAIL

SCALE: N.T.S.

30 ROOT BARRIER DETAIL

SCALE: N.T.S.

31 ROOT BARRIER DETAIL

SCALE: N.T.S.

32 ROOT BARRIER DETAIL

SCALE: N.T.S.

33 ROOT BARRIER DETAIL

SCALE: N.T.S.

34 ROOT BARRIER DETAIL

SCALE: N.T.S.

35 ROOT BARRIER DETAIL

SCALE: N.T.S.

36 ROOT BARRIER DETAIL

SCALE: N.T.S.

37 ROOT BARRIER DETAIL

SCALE: N.T.S.

38 ROOT BARRIER DETAIL

SCALE: N.T.S.

39 ROOT BARRIER DETAIL

SCALE: N.T.S.

40 ROOT BARRIER DETAIL

SCALE: N.T.S.

41 ROOT BARRIER DETAIL

SCALE: N.T.S.

42 ROOT BARRIER DETAIL

SCALE: N.T.S.

43 ROOT BARRIER DETAIL

SCALE: N.T.S.

44 ROOT BARRIER DETAIL

SCALE: N.T.S.

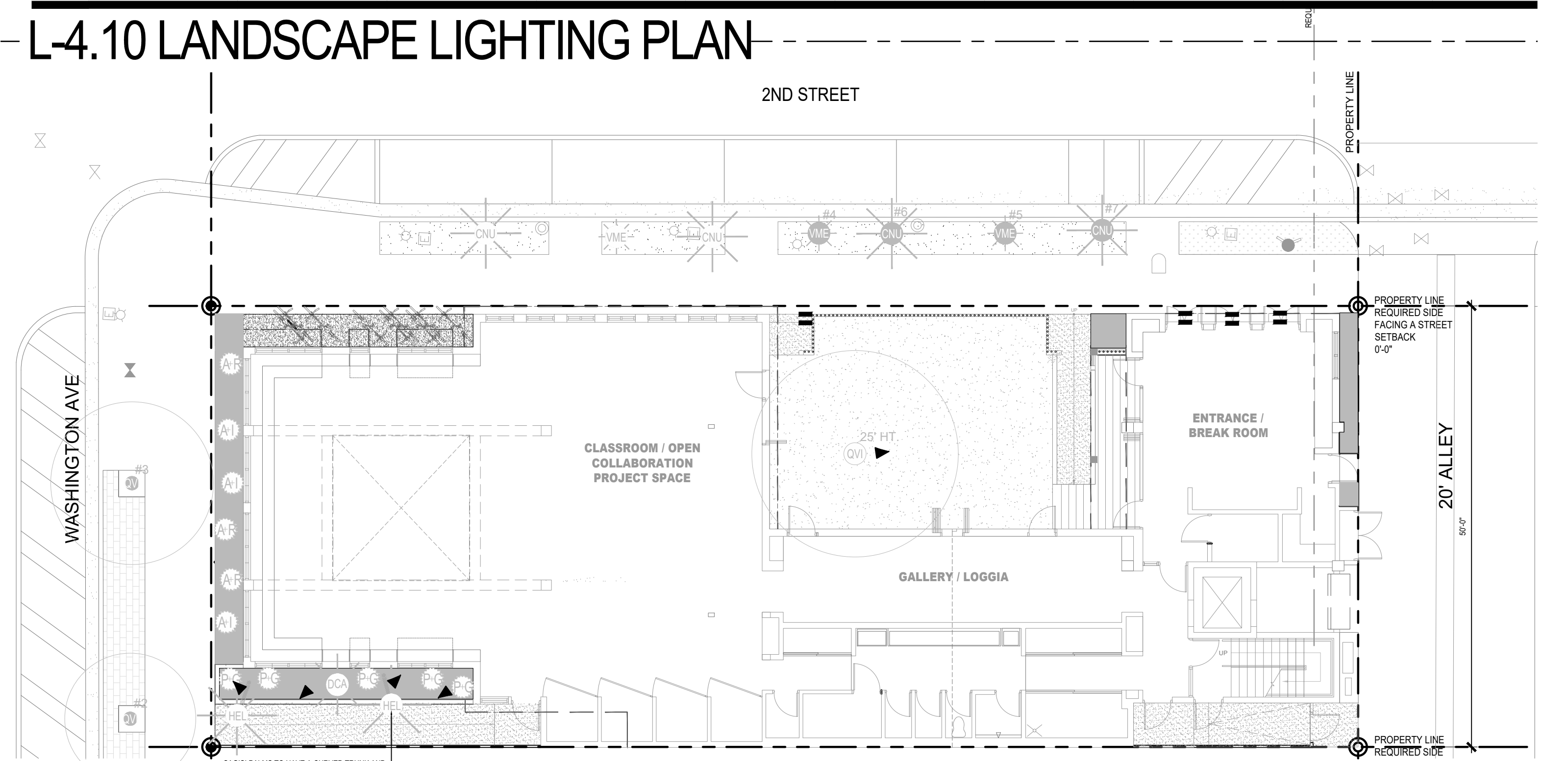
45 ROOT BARRIER DETAIL

SCALE: N.T.S.

46 ROOT BARRIER DETAIL

SCALE: N.T.S.

L-4.10 LANDSCAPE LIGHTING PLAN

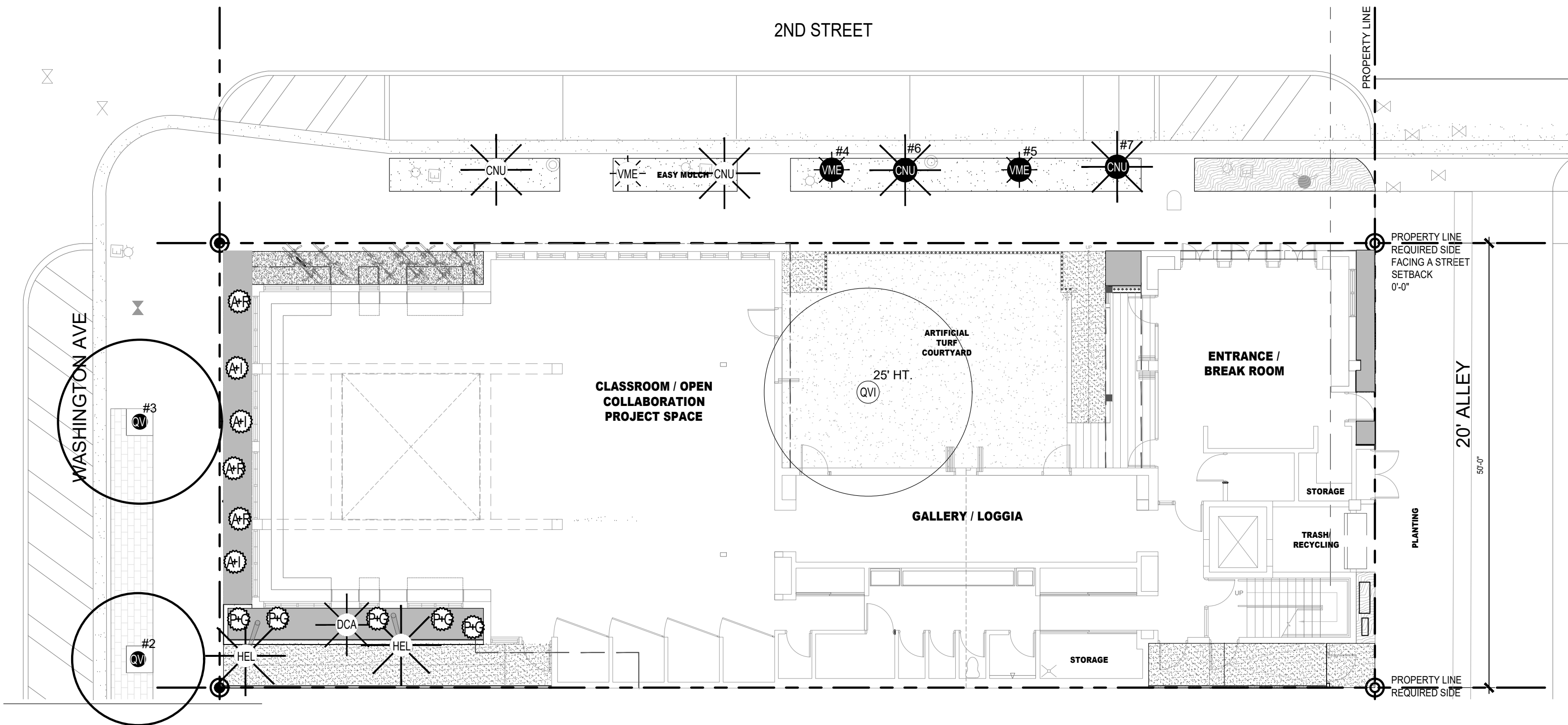


SAGISI PALMS TO HAVE A CURVED TRUNK AND TO BE LEANED AWAY FROM BUILDING PER PLAN

LANDSCAPE LIGHTING FIXTURE SCHEDULE | GROUND FLOOR

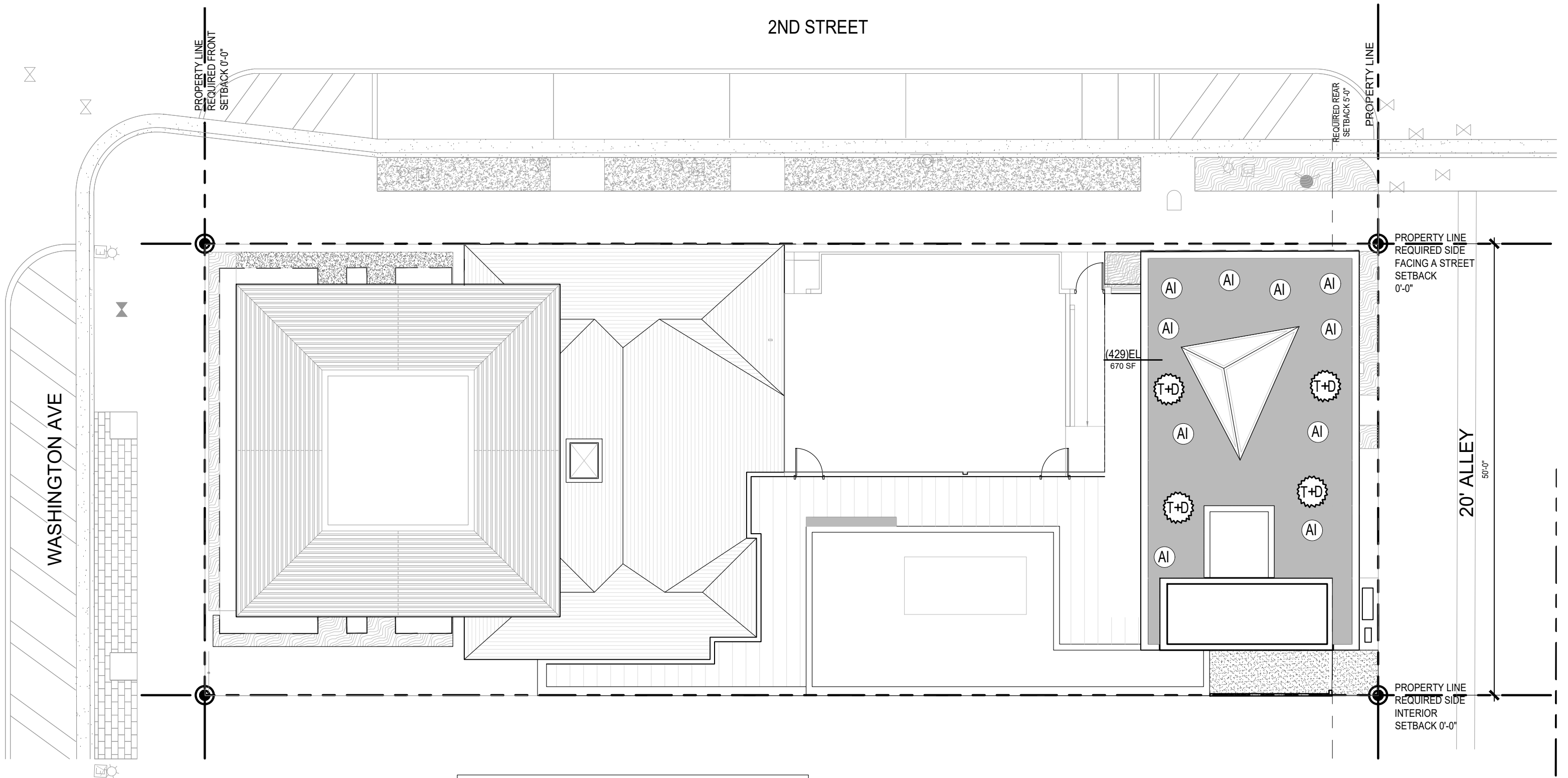
QTY.	SYMBOL	REF	APPLICATION	MANUFACTURER	MODEL NUMBER	DESCRIPTION	NOTES
5		L1	DIRECTIONAL LIGHT	AURORA LIGHT	TELLURIDE HSL16-S	MATERIAL: BRASS; SHROUD: TBD; LIGHT SOURCE: LED; [7] 7.5W; [27D] 2700K; ACCESSORIES: TBD; AMS MOUNT: TBD; FINISH: [BLP] BRONZE LIVING PATINA	U.L LISTED FOR WET LOCATION
8		L2	RECESSED SURFACE MOUNT STEP LIGHT	LIGMAN LIGHTING USA	ULE-40722	LAMP: 11W LED; FRAME: [S] STAINLESS STEEL; LED COLOR: [W27] 2700K; FINISH COLOR: [05] MATTE SILVER - RAL 9006; LENS: [C] CLEAR; OPTIONS: TBD	U.L LISTED FOR WET LOCATION

L-5.10 GROUND LEVEL IRRIGATION PLAN



NOTE: IRRIGATION PLANS SHALL PROVIDE ADEQUATE IRRIGATION TO ALL PLANTING AREAS IN COMPLIANCE WITH THE CITY OF MIAMI BEACH CODE. FULL IRRIGATION PLANS TO BE DEVELOPED FOLLOWING BOARD APPROVAL

— | -5.11 ROOF | FVF | IRRIGATION PLAN — — — — —



NOTE: IRRIGATION PLANS SHALL PROVIDE ADEQUATE IRRIGATION TO ALL PLANTING AREAS IN COMPLIANCE WITH THE CITY OF MIAMI BEACH CODE. FULL IRRIGATION PLANS TO BE DEVELOPED FOLLOWING BOARD APPROVAL