

# L & N D

MASTER PLANNING + LANDSCAPE ARCHITECTURE + DESIGN  
WWW.LAND.DESIGN

2610 NORTH MIAMI AVENUE  
MIAMI, FL 33127  
614.439.4895

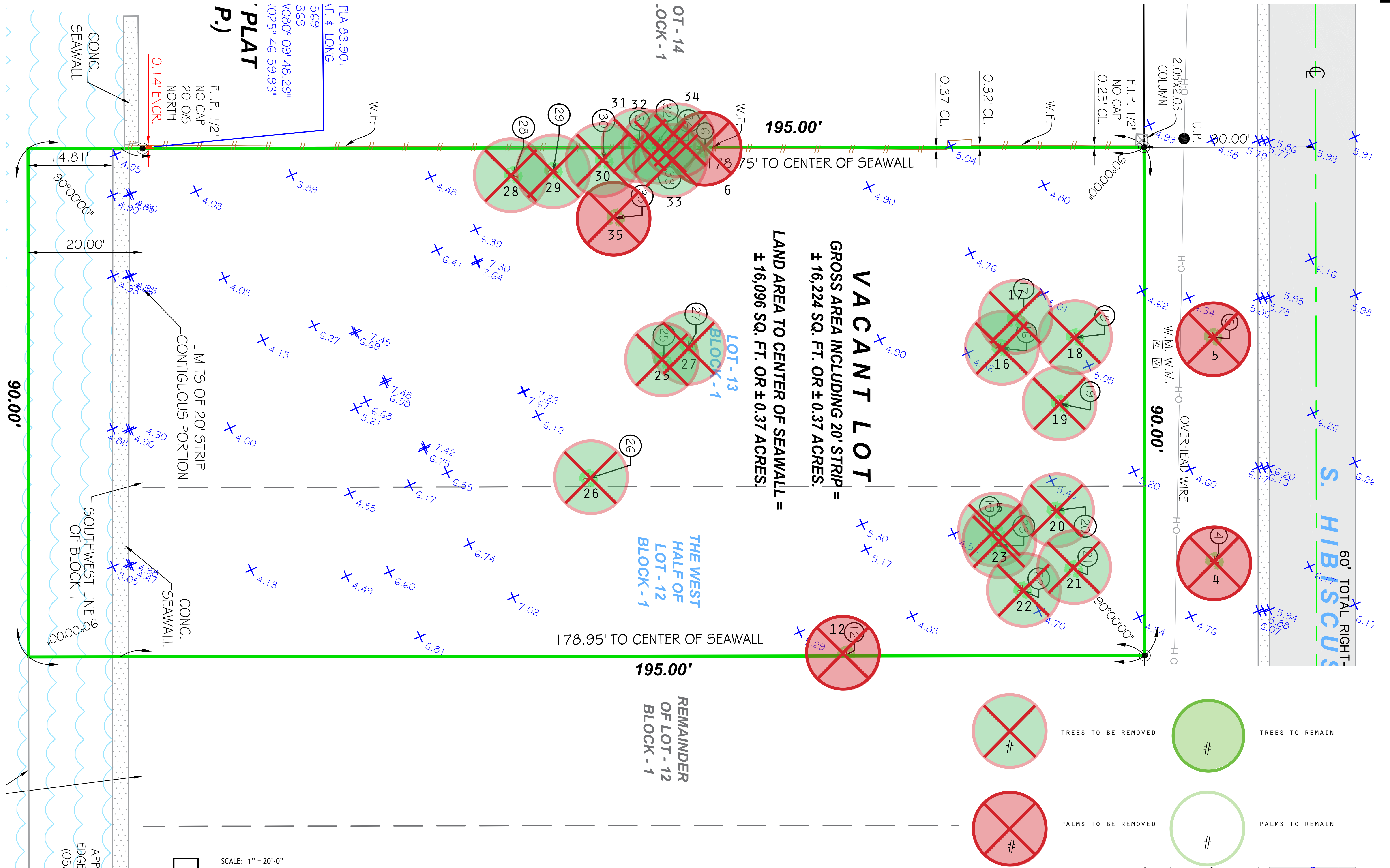
## 320 HIBISCUS DRIVE

FINAL DRB SUBMITTAL

03.08.2019

- L-02 - TREE DISPOSITION
- L-03 - DEVELOPMENT CHARTS
- L-04 - OVERALL TREE / PALM PLAN
- L-05 - OVERALL SHRUB PLAN
- L-06 - PLANTING SPECS
- L-07 - PLANTING SPECS
- L-08 - PLANTING SPECS





2610 NORTH MIAMI AVENUE  
 MIAMI, FL 33127 • 614.439.4895

TREES TO BE REMOVED  
 PALMS TO BE REMOVED

	TREES TO BE REMOVED		TREES TO REMAIN
	PALMS TO BE REMOVED		PALMS TO REMAIN

TREE DISPOSITION TABLE

TREE No.	TREE - COMMON NAME	TREE - LATIN NAME	DIAMETER at BREAST HEIGHT (in inches)	HEIGHT OF CANOPY TREES (in feet)	CANOPY DIAMETER (in feet)	CANOPY DIAMETER (in sq. ft.)	DISPOSITION	REMOVAL- MUNICIPAL CRITERIA AND NOTES				
								CRITERIA	CANOPY SQ.FT	R.O.W CANOPY SQ.FT		
6	ROYAL PAM	<i>Roystonea regia</i>	21	65	15	177	REMOVE		177			
12	FISHTAIL PALM	<i>Caryota mitis</i>	20, 20, 20	35	5	20	REMOVE		20			
15	SAHAIRE PALM	-	14	25	15	177	REMOVE		177			
16	HEDGE	-	-	-	-	-	REMOVE					
17	HEDGE	-	-	-	-	-	REMOVE					
18	HEDGE	-	-	-	-	-	REMOVE					
19	HEDGE	-	-	-	-	-	REMOVE					
20	HEDGE	-	-	-	-	-	REMOVE					
21	HEDGE	-	-	-	-	-	REMOVE					
22	HEDGE	-	-	-	-	-	REMOVE					
23	HEDGE	-	-	-	-	-	REMOVE					
24	DAYAN	-	-	-	-	-	REMOVE					
25	UNKNOWN	-	60	30	40	1257	REMOVE		1257			
26	UMBRELLA TREE	<i>Schefflera actinophylla</i>	72	25	30	707	REMOVE		707			
27	UMBRELLA TREE	<i>Schefflera actinophylla</i>	20	25	13	133	REMOVE		133			
28	UMBRELLA TREE	<i>Schefflera actinophylla</i>	48	25	10	79	REMOVE		79			
29	UMBRELLA TREE	<i>Schefflera actinophylla</i>	9	15	8	50	REMOVE		50			
30	HIBISCUS TREE	<i>Hibiscus rosa-sinensis</i>	10	30	8	50	REMOVE		50			
31	ROYAL PAM	<i>Roystonea regia</i>	13	50	15	177	REMOVE		177			
32	SEAGRAPE	<i>Coccoloba uvifera</i>	6	20	18	254	REMOVE		254			
33	SEAGRAPE	<i>Coccoloba uvifera</i>	12	30	20	314	REMOVE		314			
34	ROYAL PAM	<i>Roystonea regia</i>	9	35	50	15	REMOVE		15			
35	CARPENTERA PALM	<i>Carpentaria acuminata</i>	4	20	10	79	REMOVE		79			
<b>STREET TREES</b>												
4	ROYAL PAM	<i>Roystonea regia</i>	14	60	12	113	REMOVE		113			
5	ROYAL PAM	<i>Roystonea regia</i>	18	60	12	113	REMOVE		113			
<b>TOTAL SQ. FEET FOR SITE REMOVAL:</b>									3,713			
<b>TOTAL SQ. FEET FOR ROW REMOVALS:</b>										0		
UNITS REMOVED FROM ROW										-		
UNITS REMOVED									3,713			
<b>TOTAL UNITS REMOVED:</b>										<b>3,713</b>		
<b>PROPOSED ON SITE MITIGATION BREAKDOWN</b>												
									credit/tree	TREE CREDIT		
CATEGORY 1 TREE 2" CAL/12' HT MIN:									7	300	Category 1 Tree = 300sf credit/tree	2,100
CATEGORY 2 TREE 2" CAL/10' HT MIN:									10	150	Category 2 Tree = 150sf credit/tree	1,500
CATEGORY 3 TREE 2" CAL/8' HT MIN:									5	100	Category 3 Tree = 100sf credit/tree	500
CATEGORY 4 PALM 6" CLR TRUNK MIN:									5	50	Category 4 Palm = 50sf credit/tree	250
<b>TOTAL PROPOSED REPLACEMENT TREES (REFER TO PLANTING PLANS):</b>									<b>27</b>		<b>COMBINATION FULFILLS SITE MITIGATION OF CANOPY SF:</b>	<b>4,350</b>

LANDSCAPE LEGEND

MUNICIPALITY: City of Miami Beach  
 ZONING CLASS: **RS-3** LOT AREA: 16,096 ACRES: 0.3695  
 ORDINANCE/CODE SECTION: CITY OF MIAMI BEACH SECTION 126

**OPEN SPACE**

		REQUIRED/ ALLOWED	PROVIDED
A.	Sq. Ft. of required Open Space Lot area: <u>16,096</u> Multiplier: <u>30%</u>	<u>4,829</u>	<u>4,829</u>
B.	Sq. Ft. of parking lot open space Parking Spaces: <u>2</u> Multiplier: <u>10</u> sf/space	<u>20</u>	<u>20</u>
C.	Total Sq. Ft. of landscaped Open Space required	<u>4,849</u>	<u>4,849</u>

**LAWN AREA**

A.	Total Sq. Ft. of landscaped Open Space	<u>4,849</u>	<u>4,849</u>
B.	Maximum Lawn Area (sod) permitted- Open space required: <u>4,849</u> Multiplier: <u>20%</u>	<u>970</u>	<u>970</u>

**TREES**

A.	Number of trees required per lot, less existing trees Required Trees/Lot: <u>28</u> Net lot acres: <u>0.3695</u> Required Trees: <u>10</u> Existing trees: <u>0</u>	<u>10</u>	<u>10</u>
----	---	-----------	-----------

EXISTING TREES EXCEED CODE REQUIRED ADDITIONS

B.	% Palms allowed Trees provided: <u>10</u> Multiplier: <u>0%</u>	<u>0</u>	<u>0</u>
----	---	----------	----------

PER CODE SECTION 126-6.C.10 PALMS DO NOT COUNT TOWARD MIN. TREE REQUIREMENTS

C.	% Native required Trees provided: <u>10</u> Multiplier: <u>30%</u>	<u>3</u>	<u>3</u>
D.	% Drought tolerant and low maintenance species required Trees provided: <u>10</u> Multiplier: <u>50%</u>	<u>5</u>	<u>5</u>

**STREET TREES**

NO WORK IN THE ROW INCLUDED IN THIS SCOPE

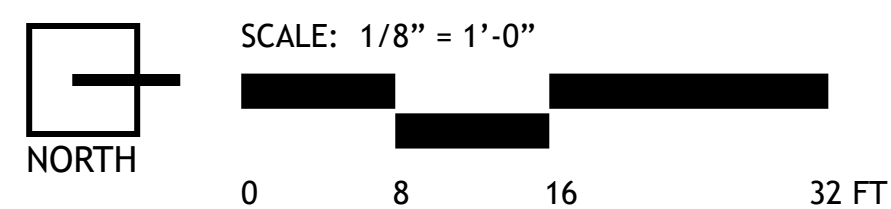
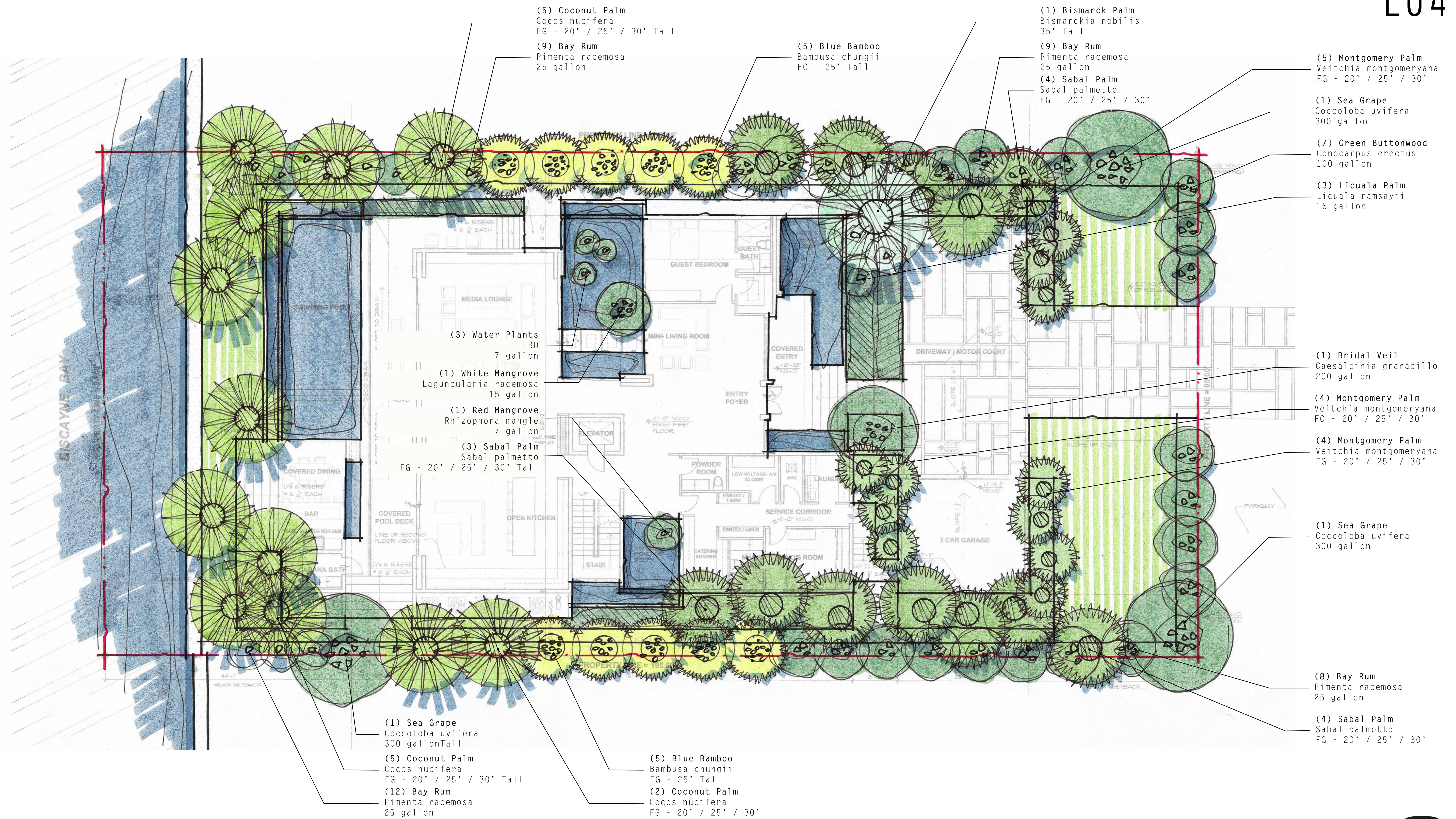
A.	Street trees (maximum average spacing of 20' o.c.) Linear ft of street frontage: <u>160</u> Multiplier: <u>20</u> Existing trees: <u>0</u>	<u>8</u>	<u>0</u>
B.	Street trees directly below power lines Linear ft of street frontage: <u>90</u> Multiplier: <u>20</u>	<u>5</u>	<u>5</u>

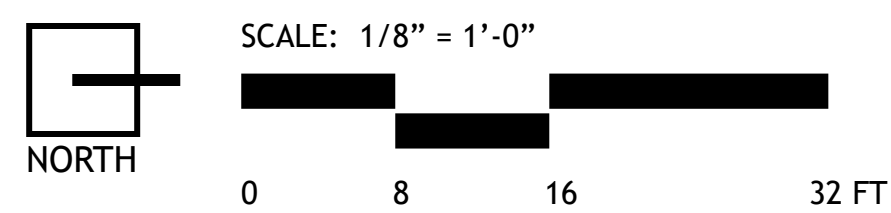
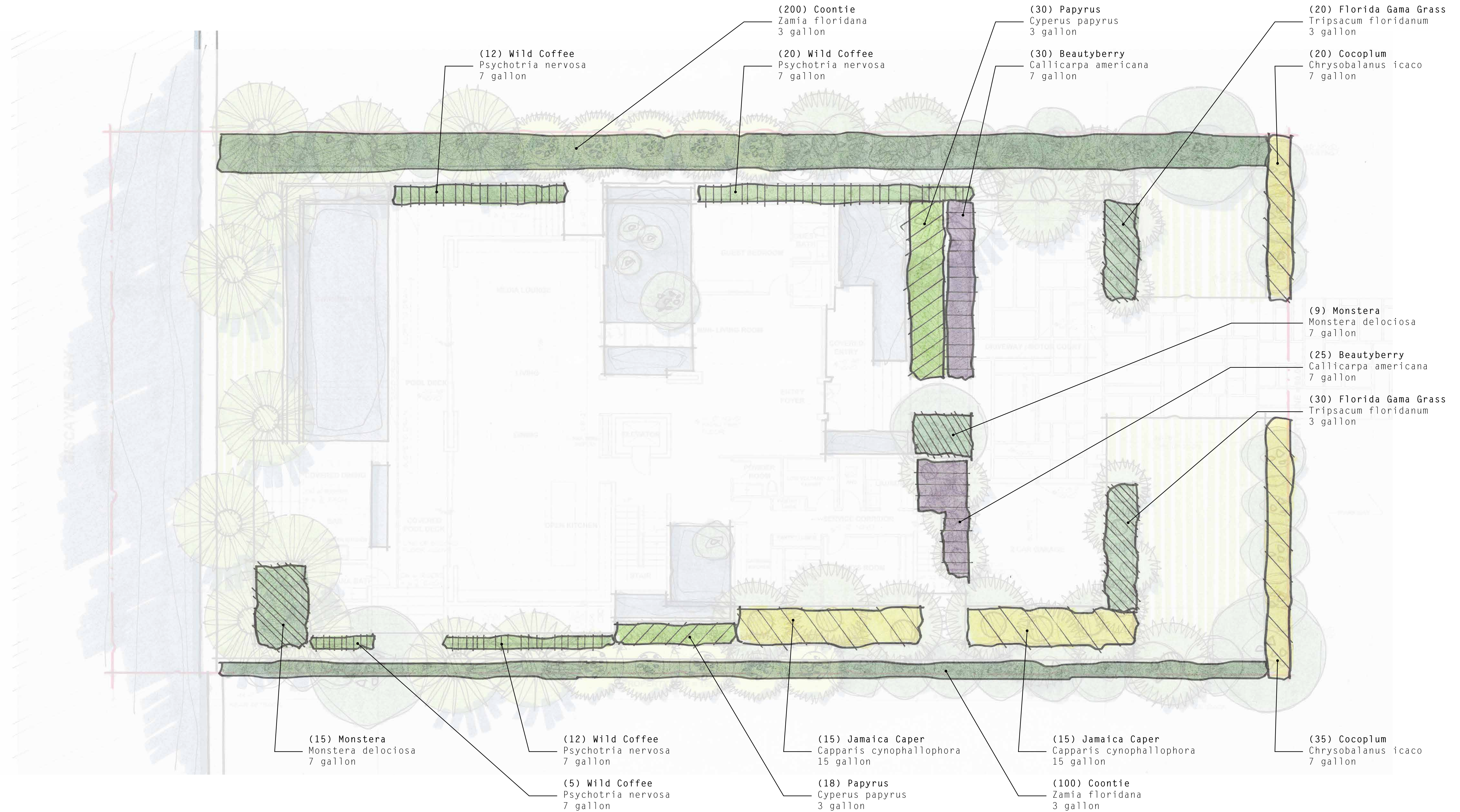
**SHRUBS**

A.	Number of shrubs required Lot and street trees required: <u>18</u> Multiplier: <u>12</u>	<u>220</u>	<u>220</u>
B.	% Native species required Shrubs provided: <u>220</u> Multiplier: <u>50%</u>	<u>110</u>	<u>110</u>

**LARGE SHRUBS OR SMALL TREES**

A.	Number of shrubs or small tree required Shrubs required: <u>220</u> Multiplier: <u>10%</u>	<u>22</u>	<u>22</u>
B.	% Native species required Shrubs provided: <u>65</u> Multiplier: <u>50%</u>	<u>33</u>	<u>33</u>



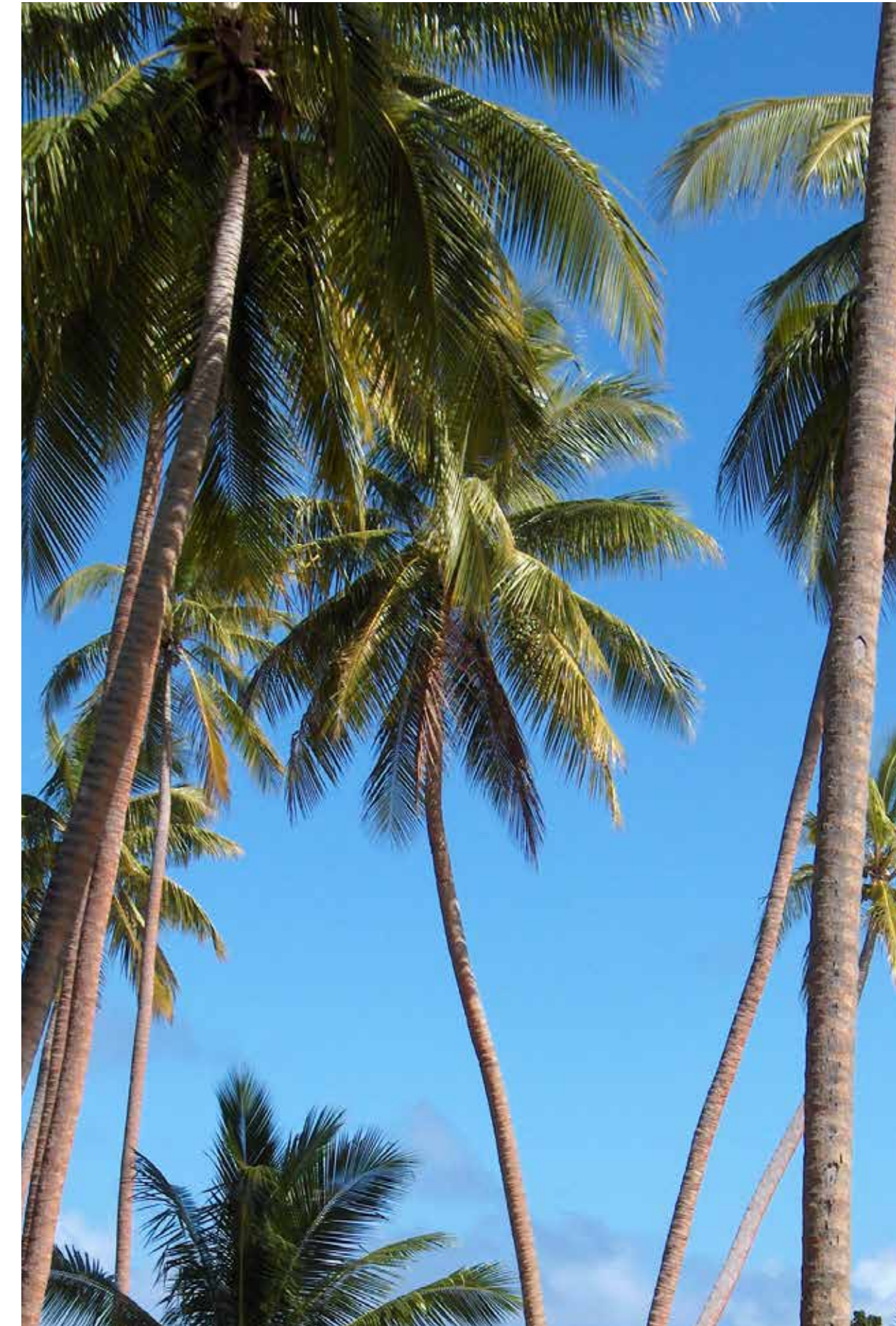




SEA GRAPE  
(300 GALLON)



MONTGOMERY PALM  
(FIELD GROWN)



COCONUT PALM  
(FIELD GROWN)



SABAL PALM  
(FIELD GROWN)



AUTOGRAPH TREE  
(100 GALLON)



RAPHIS PALM  
(25 GALLON)



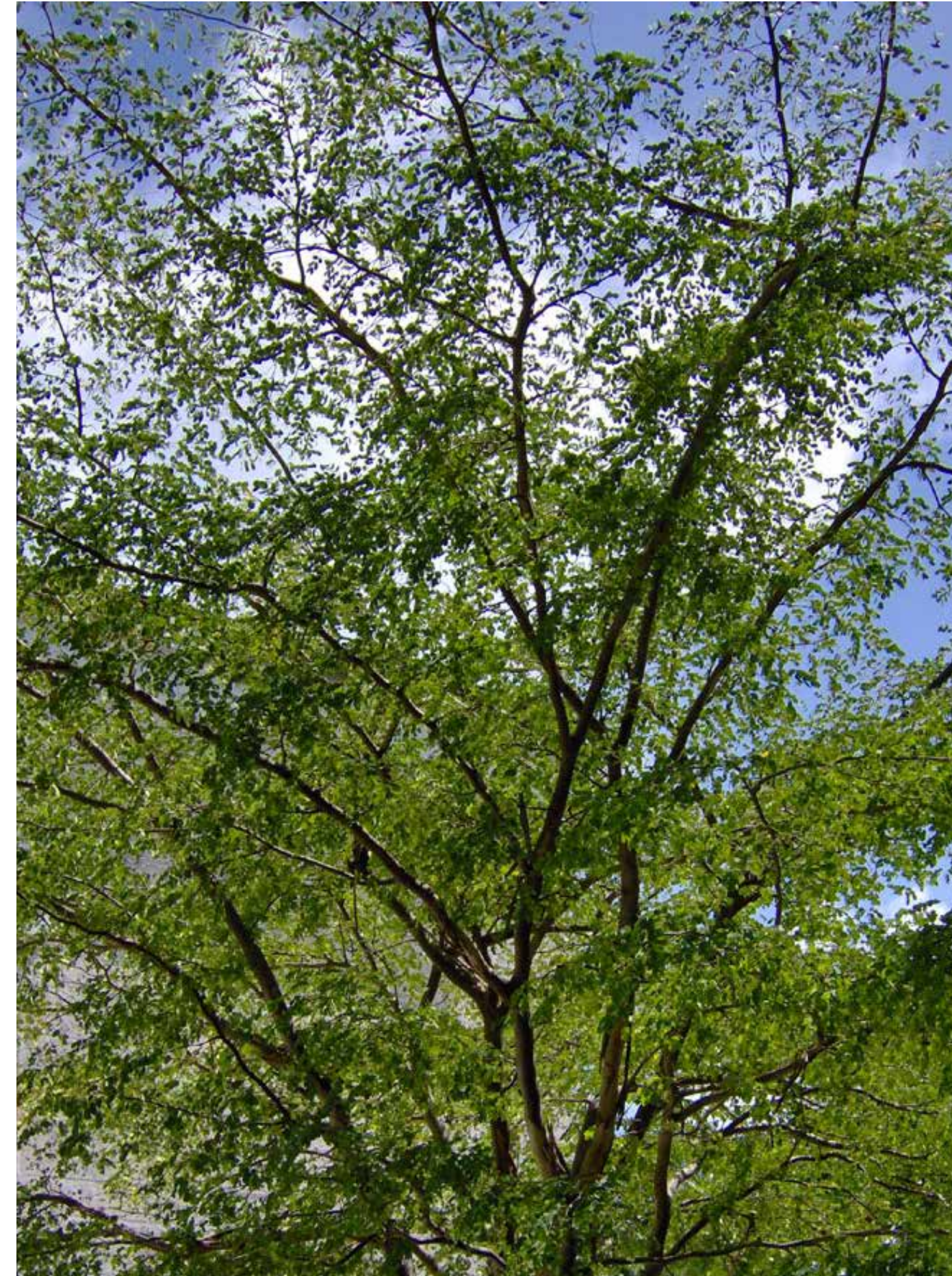
BAY RUM  
(25 GALLON)



Simpson Stopper  
(100 gallon)



Cocoplum  
(25 gallon)



Bridal Veil  
(100 gallon)



Green Buttonwood  
(45 gallon)



Crabwood  
(45 gallon)



Thatch Palm  
(30 gallon)



Papyrus  
(7 gallon)



Wild Coffee  
(7 gallon)



MONSTERA  
(15 GALLON)



FLORIDA GAMA GRASS  
(3 GALLON)



BEAUTY BERRY  
(7 GALLON)



COONTIE  
(7 GALLON)



JAMAICA CAPER  
(15 GALLON)