



APPROVED HPB SCHEME PERSPECTIVE LOOKING SOUTH DOWN COLLINS AVENUE

PROJECT

TORINO GARAGE
400 COLLINS AVE., MIAMI BEACH, FL 33139

Owner:
Savoy Hotel Partners, LLC
c/o Allied Partners
770 Lexington Ave
17th Floor
New York, NY 10065-8165

Architect:
Brandon Haw Architecture LLP
375 Park Avenue, Suite 3308
New York, NY 10152
License # AA26003249

CONSULTANTS

Structural Engineer:
DeSimone
800 Brickell Avenue, 6th Floor
Miami, FL 33131

MEP Engineer:
Stanlec
3915 Biscayne Blvd., Suite 401
Miami, FL 33137-3737

Civil Engineer:
VSN Engineering, Inc.
8660 W. Flagler Street, Suite 113
Miami, FL 33144

Geo-tech Engineer:
Langan
15150 NW 79th Court, Suite 200
Miami Lakes, FL 33016-5946

Life Safety Consultant:
SLS Consulting, Inc.
260 Palermo Avenue
Coral Gables, FL 33134

Parking Consultant:
Timothy Haas & Associates, Inc.
40 NW 3rd Street, Suite 1102
Miami, FL 33128

Elevator Consultant:
Van Deusen & Associates, Inc.
8201 Peters Road, Suite 1000
Plantation, FL 33324

Acoustic Consultant:
Electro-Media Design, Ltd.
973-C Russell Avenue
Gaithersburg, MD 20879

Landscape Architect:
Naturalistic, Inc.
6915 Red Road, Suite 224
Coral Gables, FL 33143
Contact: Andres Acosta
O: 786.717.6564 / M: 305.321.2341
Firm Reg. No. LC26000548

NO.	DESCRIPTION	DATE
1	HPB FIRST SUBMITTAL	April 15, 2019
2	HPB FINAL SUBMITTAL	May 6, 2019

DATE OF ISSUE **DRAWN BY**

04/15/19 -

SCALE **CHECKED BY**

 -

PROJECT NO. & TITLE
1507 TORINO GARAGE

PROJECT STATUS
PLANNING BOARD FINAL SUBMITTAL

KEY PLAN

SCALE & ORIENTATION

TRUE NORTH: 10.78 DEG

SCALE AS NOTED
GRAPHIC SCALE (AS NOTED)

SEAL & SIGNATURE

This document has been prepared for creative, conceptual or planning purposes only. No warranties are made regarding the design or its adequacy for construction or other purposes.
© Brandon Haw Architecture LLP 2019

DRAWING TITLE
HPB A-065.1
APPROVED HPB SCHEME - PERSPECTIVE



PROPOSED AMENDMENT SCHEME PERSPECTIVE LOOKING SOUTH DOWN COLLINS AVENUE

PROJECT

TORINO GARAGE
400 COLLINS AVE., MIAMI BEACH, FL 33139

Owner:
Savoy Hotel Partners, LLC
c/o Allied Partners
770 Lexington Ave
17th Floor
New York, NY 10065-8165

Architect:
Brandon Haw Architecture LLP
375 Park Avenue, Suite 3308
New York, NY 10152
License # AA26003249

CONSULTANTS

Structural Engineer:
DeSimone
800 Brickell Avenue, 6th Floor
Miami, FL 33131

MEP Engineer:
Stanlec
3915 Biscayne Blvd., Suite 401
Miami, FL 33137-3737

Civil Engineer:
VSN Engineering, Inc.
8660 W. Flagler Street, Suite 113
Miami, FL 33144

Geo-tech Engineer:
Langan
15150 NW 79th Court, Suite 200
Miami Lakes, FL 33016-5946

Life Safety Consultant:
SLS Consulting, Inc.
260 Palermo Avenue
Coral Gables, FL 33134

Parking Consultant:
Timothy Haas & Associates, Inc.
40 NW 3rd Street, Suite 1102
Miami, FL 33128

Elevator Consultant:
Van Deusen & Associates, Inc.
8201 Peters Road, Suite 1000
Plantation, FL 33324

Acoustic Consultant:
Electro-Media Design, Ltd.
973-C Russell Avenue
Gaithersburg, MD 20879

Landscape Architect:
Naturalistic, Inc.
6915 Red Road, Suite 224
Coral Gables, FL 33143
Contact: Andres Acosta
O: 786.717.6564 / M: 305.321.2341
Firm Reg. No. LC26000548

NO.	DESCRIPTION	DATE
1	HPB FIRST SUBMITTAL	April 15, 2019
2	HPB FINAL SUBMITTAL	May 6, 2019

DATE OF ISSUE **DRAWN BY**

04/15/19 -

SCALE **CHECKED BY**

 -

PROJECT NO. & TITLE
1507 TORINO GARAGE

PROJECT STATUS
PLANNING BOARD FINAL SUBMITTAL

KEY PLAN

SCALE & ORIENTATION

TRUE NORTH: 10.78 DEG

SCALE AS NOTED
GRAPHIC SCALE (AS NOTED)

SEAL & SIGNATURE

This document has been prepared for creative, conceptual or planning purposes only. No warranties are made regarding the design or its adequacy for construction or other purposes.
© Brandon Haw Architecture LLP 2019

DRAWING TITLE
HPB A-065.2
PROPOSED AMENDMENT
SCHEME - PERSPECTIVE

[illegible]

PROJECT

TORINO GARAGE

Owner:
Savoy Hotel Partners, LLC
c/o Allied Partners
770 Lexington Ave
17th Floor
New York, NY 10065-8165

Architect:
Brandon Haw Architecture LLP
375 Park Avenue, Suite 3308
New York, NY 10152
License # AA26003249

CONSULTANTS

MEP Engineer:
Stantec
3915 Biscayne Blvd, Suite 401
Miami, FL 33137-3737

Civil Engineer:
VSN Engineering, Inc.
8660 W. Flagler Street, Suite 113
Miami, FL 33144

Geo-tech Engineer:
Langan
15150 NW 79th Court, Suite 200
Miami Lakes, FL 33016-5848

Life Safety Consultant:
SLS Consulting, Inc.
260 Palermo Avenue
Coral Gables, FL 33134

Parking Consultant:
Timothy Haahs & Associates, Inc.
40 NW 3rd Street, Suite 1102
Miami, FL 33128

Elevator Consultant:
Van Deusen & Associates, Inc.
8201 Peters Road, Suite 1000
Plantation, FL 33324

Acoustic Consultant:
Electro-Media Design, Ltd.
973-C Russell Avenue
Gaithersburg, MD 20879

Landscap Architect:
Naturaifical, Inc.
6915 Red Road, Suite 224
Coral Gables, FL 33143
Contact: Andres Arcila
O: 786.717.6564 / M: 305.321.2341
Firm Reg. No. LC26000548

NO.	DESCRIPTION	DATE
1	HPB FIRST SUBMITTAL	April 15, 2019
2	HPB FINAL SUBMITTAL	May 6, 2019

[illegible]

DATE OF ISSUE	DRAWN BY
04/15/19	-
SCALE	CHECKED BY

PROJECT NO. & TITLE

1507 TORINO GARAGE

PROJECT STATUS

PLANNING BOARD FINAL SUBMITTAL

KEY PLAN



SCALE & ORIENTATION



TRUE NORTH: 10.78 DEG

SCALE AS NOTED
GRAPHIC SCALE (AS REQ'D)

SEAL & SIGNATURE

This document has been prepared for creative, conceptual or planning purposes only. No warranties are made regarding the design or its adequacy for construction or other purposes.

© Brandon Haw Architecture LLP 2019



DRAWING TITLE

HPB A-066.1



PROJECT

TORINO GARAGE

400 COLLINS AVE., MIAMI BEACH,
FL 33139

Owner:
Savoy Hotel Partners, LLC
c/o Allied Partners
770 Lexington Ave
17th Floor
New York, NY 10065-8165

Architect:
Brandon Haw Architecture LLP
375 Park Avenue, Suite 3308
New York, NY 10152
License # AA26003249

CONSULTANTS

Structural Engineer:
DeSimone
800 Brickell Avenue, 6th Floor
Miami, FL 33131

MEP Engineer:
Stantec
3915 Biscayne Blvd, Suite 401
Miami, FL 33137-3737

Civil Engineer:
VSN Engineering, Inc.
8660 W. Flagler Street, Suite 113
Miami, FL 33144

Geo-tech Engineer:
Langan
15150 NW 79th Court, Suite 200
Miami Lakes, FL 33016-5848

Life Safety Consultant:
SLS Consulting, Inc.
260 Palermo Avenue
Coral Gables, FL 33134

Parking Consultant:
Timothy Haahs & Associates, Inc.
40 NW 3rd Street, Suite 1102
Miami, FL 33128

Elevator Consultant:
Van Deusen & Associates, Inc
8201 Peters Road, Suite 1000
Plantation, FL 33324

Acoustic Consultant:
Electro-Media Design, Ltd
973-C Russell Avenue
Gaithersburg, MD 20879

Landscape Architect:
Naturaofficial, Inc.
6915 Red Road, Suite 224
Coral Gables, FL 33143
Contact: Andres Arcila
O: 786.717.6564 / M: 305.321.2341
Firm Reg. No. LC26000548

NO.	DESCRIPTION	DATE
1	HPB FIRST SUBMITTAL	April 15, 2019
2	HPB FINAL SUBMITTAL	May 6, 2019

DATE OF ISSUE	DRAWN BY
04/15/19	-
SCALE	CHECKED BY

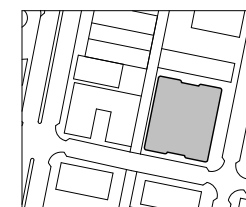
PROJECT NO. & TITLE

1507 TORINO GARAGE

PROJECT STATUS

PLANNING BOARD FINAL SUBMITTAL

KEY PLAN



SCALE & ORIENTATION



TRUE NORTH: 10.78 DEG

SCALE AS NOTED
GRAPHIC SCALE (AS REQUIRED)

SEAL & SIGNATURE

This document has been prepared for creative, conceptual or planning purposes only. No warranties are made regarding the design or its adequacy for construction or other purposes.

© Brandon Haw Architecture LLP 2019

© Brandon Haw Architecture LLP 2015



DRAWING TITLE

HPB A-066.2



APPROVED HPB SCHEME PERSPECTIVE LOOKING NORTH UP COLLINS AVENUE

PROJECT

TORINO GARAGE

400 COLLINS AVE., MIAMI BEACH, FL 33139

Owner:

Savoy Hotel Partners, LLC

c/o Allied Partners

770 Lexington Ave

17th Floor

New York, NY 10065-8165

Architect:

Brandon Haw Architecture LLP

375 Park Avenue, Suite 3308

New York, NY 10152

License # AA26003249

CONSULTANTS

Structural Engineer:

DeSimone

800 Brickell Avenue, 6th Floor

Miami, FL 33131

MEP Engineer:

Stanlec

3915 Biscayne Blvd, Suite 401

Miami, FL 33137-3737

Civil Engineer:

VSN Engineering, Inc.

8660 W. Flagler Street, Suite 113

Miami, FL 33144

Geo-tech Engineer:

Langan

15150 NW 79th Court, Suite 200

Miami Lakes, FL 33016-5646

Life Safety Consultant:

SLS Consulting, Inc.

260 Palermo Avenue

Coral Gables, FL 33134

Parking Consultant:

Timothy Haas & Associates, Inc.

40 NW 3rd Street, Suite 1102

Miami, FL 33128

Elevator Consultant:

Van Deusen & Associates, Inc.

8201 Peters Road, Suite 1000

Plantation, FL 33324

Acoustic Consultant:

Electro-Media Design, Ltd.

973-C Russell Avenue

Gaithersburg, MD 20879

Landscape Architect:

Naturalific, Inc.

6915 Red Road, Suite 224

Coral Gables, FL 33143

Contact: Andrie Arcila

O: 786.717.6564 / M: 305.321.2341

Firm Reg. No. LC26000548

NO.	DESCRIPTION	DATE
1	HPB FIRST SUBMITTAL	April 15, 2019
2	HPB FINAL SUBMITTAL	May 6, 2019

DATE OF ISSUE

04/15/19

DRAWN BY

-

SCALE

-

CHECKED BY

-

PROJECT NO. & TITLE

1507 TORINO GARAGE

PROJECT STATUS

PLANNING BOARD FINAL SUBMITTAL

KEY PLAN

SCALE & ORIENTATION

TRUE NORTH: 10.78 DEG

SCALE AS NOTED

GRAPHIC SCALE (AS NOTED)

SEAL & SIGNATURE

This document has been prepared for creative, conceptual or planning purposes only. No warranties are made regarding the design or its adequacy for construction or other purposes.

© Brandon Haw Architecture LLP 2019

DRAWING TITLE

HPB A-067.1

APPROVED HPB SCHEME - PERSPECTIVE

[illegible]

TORINO GARAGE
400 COLLINS AVE., MIAMI BEACH,
FL 33139

Owner:
Savoy Hotel Partners, LLC
c/o Allied Partners
770 Lexington Ave
17th Floor
New York, NY 10065-8165

Architect:
Brandon Haw Architecture LLP
375 Park Avenue, Suite 3308
New York, NY 10152
License # AA26003249

Structural Engineer:
DeSimone
800 Brickell Avenue, 6th Floor
Miami, FL 33131

MEP Engineer:
Stanlec
3915 Biscayne Blvd, Suite 401
Miami, FL 33137-3737

Civil Engineer:
VSN Engineering, Inc.
8660 W. Flagler Street, Suite 113
Miami, FL 33144

Geo-tech Engineer:
Langan
15150 NW 79th Court, Suite 200
Miami Lakes, FL 33016-5848

Life Safety Consultant:
SLS Consulting, Inc.
260 Palermo Avenue
Coral Gables, FL 33134

Parking Consultant:
Timothy Hahn & Associates, Inc.
40 NW 3rd Street, Suite 1102
Miami, FL 33128

Elevator Consultant:
Van Deusen & Associates, Inc.
8201 Peters Road, Suite 1000
Plantation, FL 33324

Acoustic Consultant:
Electro-Music Design, Ltd.
97-C Russell Avenue
Galthersburg, MD 20879

Landscape Architect:
Naturalistic, Inc.
6915 Red Road, Suite 224
Coral Gables, FL 33143
Contact: Andrea Arcilla
793-C 15564 / N. 305.321.2341
Firm Reg. No. LC26000548

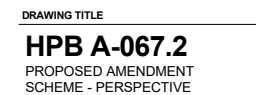
[illegible]

PROJECT NO. & TITLE
1507 TORINO GARAGE
PROJECT STATUS
PLANNING BOARD FINAL SUBMITTAL

TRUE NORTH: 10.78 DEG

This document has been prepared for creative, conceptual or planning purposes only. No warranties are made regarding the design or its adequacy for construction or other purposes.

© Brandon Haw Architecture LLP 2019



NOT FOR CONSTRUCTION



APPROVED HPB SCHEME PERSPECTIVE LOOKING WEST DOWN 4TH STREET

PROJECT

TORINO GARAGE
400 COLLINS AVE., MIAMI BEACH, FL 33139

Owner:
Savoy Hotel Partners, LLC
c/o Allied Partners
770 Lexington Ave
17th Floor
New York, NY 10065-8165

Architect:
Brandon Haw Architecture LLP
375 Park Avenue, Suite 3308
New York, NY 10152
License # AA26003249

CONSULTANTS

Structural Engineer:
DeSimone
800 Brickell Avenue, 6th Floor
Miami, FL 33131

MEP Engineer:
Stanlec
3915 Biscayne Blvd., Suite 401
Miami, FL 33137-3737

Civil Engineer:
VSN Engineering, Inc.
8800 W. Flagler Street, Suite 113
Miami, FL 33144

Geo-tech Engineer:
Langan
15150 NW 79th Court, Suite 200
Miami Lakes, FL 33016-5646

Life Safety Consultant:
SLS Consulting, Inc.
260 Palermo Avenue
Coral Gables, FL 33134

Parking Consultant:
Timothy Haas & Associates, Inc.
40 NW 3rd Street, Suite 1102
Miami, FL 33128

Elevator Consultant:
Van Deusen & Associates, Inc.
8201 Peters Road, Suite 1000
Plantation, FL 33324

Acoustic Consultant:
Electro-Media Design, Ltd.
973-C Russell Avenue
Gaithersburg, MD 20879

Landscape Architect:
Naturalistic, Inc.
6915 Red Road, Suite 224
Coral Gables, FL 33143
Contact: Andrie Arcia
O: 786.717.6564 / M: 305.321.2341
Firm Reg. No. LC26000548

NO.	DESCRIPTION	DATE
1	HPB FIRST SUBMITTAL	April 15, 2019
2	HPB FINAL SUBMITTAL	May 6, 2019

DATE OF ISSUE DRAWN BY

04/15/19 -

SCALE CHECKED BY

 -

PROJECT NO. & TITLE

1507 TORINO GARAGE

PROJECT STATUS

PLANNING BOARD FINAL SUBMITTAL

KEY PLAN

SCALE & ORIENTATION

TRUE NORTH: 10.78 DEG

SCALE AS NOTED

GRAPHIC SCALE (AS NOTED)

SEAL & SIGNATURE

This document has been prepared for creative, conceptual or planning purposes only. No warranties are made regarding the design or its adequacy for construction or other purposes.

© Brandon Haw Architecture LLP 2019

DRAWING TITLE

HPB A-068.1
APPROVED HPB SCHEME - PERSPECTIVE

ARCH D 36"x24"



PROPOSED AMENDMENT SCHEME PERSPECTIVE LOOKING WEST DOWN 4TH STREET

PROJECT
TORINO GARAGE
400 COLLINS AVE., MIAMI BEACH,
FL 33139
Owner:
Savoy Hotel Partners, LLC
c/o Allied Partners
770 Lexington Ave
17th Floor
New York, NY 10065-8165
Architect:
Brandon Haw Architecture LLP
375 Park Avenue, Suite 3308
New York, NY 10152
License # AA26003249

CONSULTANTS
Structural Engineer:
DeSimone
800 Brickell Avenue, 6th Floor
Miami, FL 33131
MEP Engineer:
Stanlec
3915 Biscayne Blvd., Suite 401
Miami, FL 33137-3737
Civil Engineer:
VSN Engineering, Inc.
8800 W. Flagler Street, Suite 113
Miami, FL 33144
Geo-tech Engineer:
Langan
15150 NW 79th Court, Suite 200
Miami Lakes, FL 33016-5646
Life Safety Consultant:
SLS Consulting, Inc.
260 Palermo Avenue
Coral Gables, FL 33134
Parking Consultant:
Timothy Haas & Associates, Inc.
40 NW 3rd Street, Suite 1102
Miami, FL 33128
Elevator Consultant:
Van Deusen & Associates, Inc.
8201 Peters Road, Suite 1000
Plantation, FL 33324
Acoustic Consultant:
Electro-Media Design, Ltd.
973-C Russell Avenue
Gaithersburg, MD 20879
Landscape Architect:
Naturalistic, Inc.
6915 Red Road, Suite 224
Coral Gables, FL 33143
Contact: Andrie Arcia
O: 786.717.6564 / M: 305.321.2341
Firm Reg. No. LC26000548

NO.	DESCRIPTION	DATE
1	HPB FIRST SUBMITTAL	April 15, 2019
2	HPB FINAL SUBMITTAL	May 6, 2019

DATE OF ISSUE **DRAWN BY**
04/15/19 -
SCALE **CHECKED BY**
- -

PROJECT NO. & TITLE
1507 TORINO GARAGE
PROJECT STATUS
PLANNING BOARD FINAL SUBMITTAL

KEY PLAN


SCALE & ORIENTATION

TRUE NORTH: 10.78 DEG

SCALE AS NOTED
GRAPHIC SCALE (AS NOTED)

SEAL & SIGNATURE
This document has been prepared for creative, conceptual or planning purposes only. No warranties are made regarding the design or its adequacy for construction or other purposes.
© Brandon Haw Architecture LLP 2019


DRAWING TITLE
HPB A-068.2
PROPOSED BUILDING -
PERSPECTIVE

NOT FOR CONSTRUCTION



Leonard Horowitz

Artist/Designer: During the process of designating South Beach into a historic district, Horowitz proposed highlighting Art Deco design through a curated pastel palette.



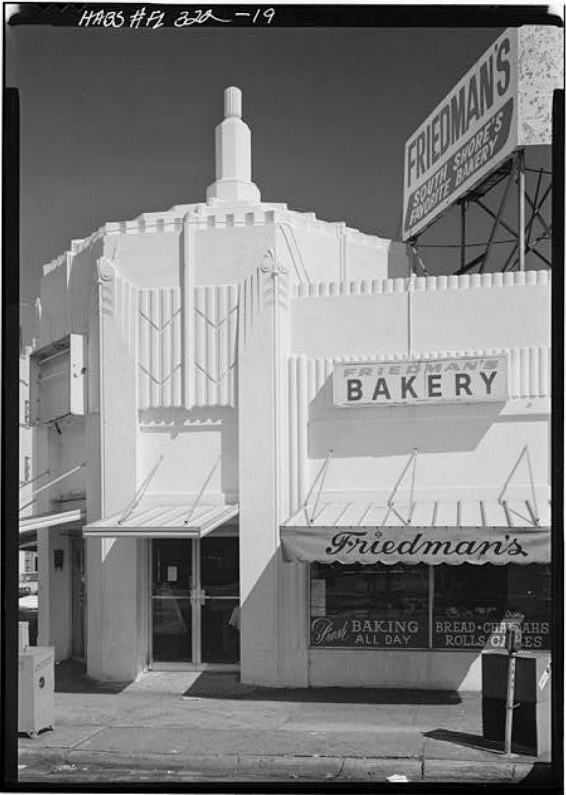
Barbara Capitman

Founder of the Miami Design Preservation League, spearheaded the process of establishing the historic district.



Palette of pastels created by Leonard Horowitz

...“He looked at the sun and the sky and the seas and the beach and pulled out these colors and put them together on this palette”...



Friedman's Bakery, before the pastel

The art deco building, originally white, was to be the first building to be painted with Leonard Friedman's palette.



Progressive Architecture, November 1982

with Friedman's Bakery repainted in Leonard Horowitz's pastels featured on cover.

PROJECT

TORINO GARAGE

400 COLLINS AVE., MIAMI BEACH, FL 33139

Owner:
Savoy Hotel Partners, LLC
c/o Allied Partners
770 Lexington Ave
17th Floor
New York, NY 10065-8165

Architect:
Brandon Haw Architecture LLP
375 Park Avenue, Suite 3308
New York, NY 10152
License # AA26003249

CONSULTANTS

Structural Engineer:
DeSimone
800 Brickell Avenue, 6th Floor
Miami, FL 33131

MEP Engineer:
Stanlec
3915 Biscayne Blvd., Suite 401
Miami, FL 33137-3737

Civil Engineer:
VSN Engineering, Inc.
8660 W. Flagler Street, Suite 113
Miami, FL 33144

Geo-tech Engineer:
Langan
15150 NW 79th Court, Suite 200
Miami Lakes, FL 33016-5646

Life Safety Consultant:
SLS Consulting, Inc.
260 Palermo Avenue
Coral Gables, FL 33134

Parking Consultant:
Timothy Haas & Associates, Inc.
40 NW 3rd Street, Suite 1102
Miami, FL 33128

Elevator Consultant:
Van Deusen & Associates, Inc.
8201 Peters Road, Suite 1000
Plantation, FL 33324

Acoustic Consultant:
Electro-Media Design, Ltd.
973-C Russell Avenue
Gaithersburg, MD 20879

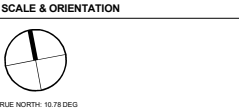
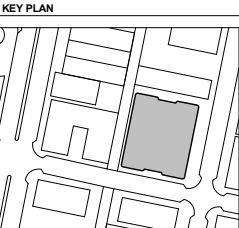
Landscape Architect:
Naturalistic, Inc.
6915 Red Road, Suite 224
Coral Gables, FL 33143
Contact: Andrie Arcia
O: 786.717.6564 / M: 305.321.2341
Firm Reg. No. LC26000548

NO.	DESCRIPTION	DATE
1	HPB FIRST SUBMITTAL	April 15, 2019
2	HPB FINAL SUBMITTAL	May 6, 2019

DATE OF ISSUE	DRAWN BY
04/15/19	-
SCALE	CHECKED BY
-	-

PROJECT NO. & TITLE
1507 TORINO GARAGE

PROJECT STATUS
PLANNING BOARD FINAL SUBMITTAL



SCALE & ORIENTATION

SCALE AS NOTED
GRAPHIC SCALE (AS NOTED)

SEAL & SIGNATURE

This document has been prepared for creative, conceptual or planning purposes only. No warranties are made regarding the design or its adequacy for construction or other purposes.

© Brandon Haw Architecture LLP 2019



DRAWING TITLE
HPB A-070
HISTORICAL CONTEXT - COLOR

NOT FOR CONSTRUCTION



SHERWIN WILLIAMS

Main Exterior Colors

6000 – Snowfall
6001 – Grayish
6002 – Essential Gray
6007 – Smart White
6008 – Individual White
6009 – Imagine
6014 – Quartz White
6015 – Vaguely Mauve
6016 – Chaise Mauve
6028 – Cultured Pearl
6029 – White Truffle
6035 – Gauzy White
6036 – Angora
6037 – Temperate Taupe
6042 – Hush White
6043 – Unfussy Beige
6049 – Gorgeous White
6056 – Polite White
6057 – Malted Milk
6064 – Nice White
6064 – Refinement
6070 – Heron Plume
6071 – Popular Gray
6072 – Versailles Gray
6077 – Everyday White
6078 – Realist Beige
6079 – Diverse Beige
6084 – Modest White
6085 – Simplify Beige
6091 – Reliable White
6098 – Pacer White
6099 – Sand Dollar
6105 – Divine White
6119 – Antique White
6126 – Navajo White
6133 – Muslin
6140 – Moderate White
6141 – Softer Tan
6147 – Panda White
6148 – Wool Skein
6154 – Nacre
6155 – Rice Grain
6161 – Nonchalant White
6162 – Ancient Marble
6168 – Moderne White
6169 – Sedate Gray
6170 – Techno Gray
6175 – Sagey
6176 – Livable Green
6182 – Ethereal White
6183 – Conservative Gray
6184 – Austere Gray
6189 – Opaline
6190 – Filmy Green
6191 – Contented
6196 – Frosty White
6197 – Albat Gray
6198 – Sensible Hue
6203 – Spare White
6204 – Sea Salt
6205 – Comfort Gray
6210 – Window Pane
6211 – Rainwashed
6217 – Topsoil
6218 – Tradewind
6224 – Mountain Air

6225 – Sleepy Blue
6231 – Rock Candy
6232 – Misty
6233 – Samovar Silver
6238 – Icicle
6239 – Upward
6245 – Quicksilver
6246 – North Star
6247 – Krylon
6252 – Ice Cube
6253 – Olympus White
6254 – Lazy Gray
6259 – Spatula White
6260 – Unique Gray
6266 – Discrete White
6267 – Sensitive Tint
6273 – Nouvelle White
6274 – Destiny
6275 – Fashionable Gray
6385 – Dover White
6413 – Restoration Ivory
6414 – Rice Paddy
6420 – Queen Anne's Lace
6421 – Celery
6427 – Sprout
6428 – Honeydew
6429 – Boize Green
6434 – Spinach White
6436 – Bonsai Tint
6441 – White Mint
6455 – Fleeting Green
6462 – Green Trance
6469 – Dewy
6470 – Waterscape
6476 – Glimmer
6477 – Tidewater
6478 – Watery
6490 – Timid Blue
6497 – Blue Horizon
6498 – Byte Blue
6499 – Stream
6504 – Sky High
6511 – Snowdrop
6512 – Balmy
6513 – Take Five
6518 – Ski Slope
6519 – Hinting Blue
6520 – Honest Air
6525 – Rarefied Air
6526 – Icelandic
6532 – Aura White
6533 – Mild Blue
6534 – Ivy

6572 – Morning Sun
6579 – Full Moon
6680 – Friendly Yellow
6686 – Lemon Chiffon
6687 – Lantern Light
6693 – Lily
6694 – Glad Yellow
6700 – Daybreak
6707 – Narcissus
6714 – Citrine
6721 – Enlightened Lime
6728 – White Willow
6742 – Lighter Mint
6763 – Refining Blue
6777 – Corefree
6778 – Aviary Blue

6784 – Bravo Blue
6791 – Lauren's Surprise
6798 – Iceberg
6799 – Soot
6805 – Glass Bead
6806 – Rhythmic Blue
6807 – Wandrous Blue
6812 – White Iris
6813 – Wishful Blue
7000 – Ibis White
7001 – Marshmallow
7002 – Dawny
7003 – Togue White
7004 – Snowbound
7005 – Pure White
7006 – Extra White
7007 – Ceiling Bright White
7008 – Alabaster
7009 – Pearly White
7010 – White Duck
7011 – Natural Choice
7012 – Creamy
7013 – Ivory Lace
7014 – Elder White
7015 – Repose Gray
7016 – Mindful Gray
7021 – Simple White
7022 – Alpaca
7023 – Requisite Gray
7028 – Incredible White
7029 – Agreeable Gray
7030 – Anew Gray
7035 – Aesthetic White
7036 – Accessible Beige
7042 – Shoji White
7043 – Worldly Gray
7044 – Amazing Gray
7056 – Reserved White
7057 – Silver Strand
7058 – Magnetic Gray
7063 – Nebulous White
7064 – Passive
7065 – Argos
7070 – Site White
7071 – Gray Screen
7077 – Original White
7078 – Minute Mauve
7100 – Arcade White
7101 – Futon
7102 – White Flour
7103 – Whitehall
7104 – Cotton White
7105 – Paperwhite
7106 – Honied White
7121 – Corona
7122 – Lemon Drop
7123 – Yellow Beam
7124 – Crescent Moon
7125 – Glittery Yellow
7126 – Pearl Onion
7127 – Apple Slice
7128 – Green Glaze
7131 – Brooklet
7133 – Faraway Blue
7134 – Tibetan Sky
7135 – Twinkle
7136 – Chapeau Violet
7138 – Lavender Wisp
7140 – Snowberry

Trim Colors

Grays
7072 – Online
7065 – Argos
7017 – Dorian Gray
7030 – Anew Gray

Whites
7005 – Pure White
7004 – Snowbound
7102 – White Flour

Off-Whites
6119 – Antique White
6126 – Navajo White
6371 – Vanillin



Preapproved Exterior Paint Colors

The swatches shown on right shows the boxed section of the list.

PROJECT

TORINO GARAGE

400 COLLINS AVE., MIAMI BEACH,
FL 33139

Owner:

Savoy Hotel Partners, LLC
c/o Allied Partners
770 Lexington Ave
17th Floor
New York, NY 10065-8165

Architect:

Brandon Haw Architecture LLP
375 Park Avenue, Suite 3308
New York, NY 10152
License # AA26003249

CONSULTANTS

Structural Engineer:

DeSimone
800 Brickell Avenue, 6th Floor
Miami, FL 33131

MEP Engineer:

Stanlec
3915 Biscayne Blvd., Suite 401
Miami, FL 33137-3737

Civil Engineer:

VSN Engineering, Inc.
8660 W. Flagler Street, Suite 113
Miami, FL 33144

Geo-tech Engineer:

Langan
15150 NW 79th Court, Suite 200
Miami Lakes, FL 33016-5646

Life Safety Consultant:

SLS Consulting, Inc.
260 Palermo Avenue
Coral Gables, FL 33134

Parking Consultant:

Timothy Haas & Associates, Inc.
40 NW 3rd Street, Suite 1102
Miami, FL 33128

Elevator Consultant:

Van Deusen & Associates, Inc.
8201 Peters Road, Suite 1000
Plantation, FL 33324

Acoustic Consultant:

Electro-Media Design, Ltd.
973-C Russell Avenue
Gaithersburg, MD 20879

Landscape Architect:

Naturalistic, Inc.
6915 Red Road, Suite 224
Coral Gables, FL 33143
Contact: Andrie Arcia
O: 786.717.6564 / M: 305.321.2341
Firm Reg. No. LC26000548

NO.	DESCRIPTION	DATE
1	HPB FIRST SUBMITTAL	April 15, 2019
2	HPB FINAL SUBMITTAL	May 6, 2019

DATE OF ISSUE	DRAWN BY
---------------	----------

04/15/19	-
----------	---

SCALE	CHECKED BY
-------	------------

-	-
---	---

PROJECT NO. & TITLE

1507 TORINO GARAGE

PROJECT STATUS

PLANNING BOARD FINAL SUBMITTAL

KEY PLAN



SCALE & ORIENTATION



TRUE NORTH: 10.78 DEG

SCALE AS NOTED

GRAPHIC SCALE (AS NOTED)

SEAL & SIGNATURE

This document has been prepared for creative, conceptual or planning purposes only. No warranties are made regarding the design or its adequacy for construction or other purposes.

© Brandon Haw Architecture LLP 2019



DRAWING TITLE

HPB A-071

HISTORICAL CONTEXT - COLOR

NOT FOR CONSTRUCTION



PROJECT

TORINO GARAGE

400 COLLINS AVE., MIAMI BEACH,
FL 33139
Owner:
Savoy Hotel Partners, LLC
c/o Allied Partners
770 Lexington Ave
17th Floor
New York, NY 10065-8165
Architect:
Brandon Haw Architecture LLP
375 Park Avenue, Suite 3308
New York, NY 10152
License # AA26003249

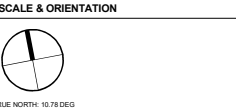
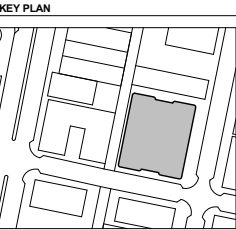
CONSULTANTS

Structural Engineer:
DeSimone
800 Brickell Avenue, 6th Floor
Miami, FL 33131
MEP Engineer:
Stanlec
3915 Biscayne Blvd., Suite 401
Miami, FL 33137-3737
Civil Engineer:
VSN Engineering, Inc.
8660 W. Flagler Street, Suite 113
Miami, FL 33144
Geo-tech Engineer:
Langan
15150 NW 79th Court, Suite 200
Miami Lakes, FL 33016-5948
Life Safety Consultant:
SLS Consulting, Inc.
260 Palermo Avenue
Coral Gables, FL 33134
Parking Consultant:
Timothy Haas & Associates, Inc.
40 NW 3rd Street, Suite 1102
Miami, FL 33128
Elevator Consultant:
Van Deusen & Associates, Inc.
8201 Peters Road, Suite 1000
Plantation, FL 33324
Acoustic Consultant:
Electro-Media Design, Ltd.
973-C Russell Avenue
Gaithersburg, MD 20879
Landscape Architect:
Naturalistic, Inc.
6915 Red Road, Suite 224
Coral Gables, FL 33143
Contact: Andre Acosta
O: 786.717.6564 / M: 305.321.2341
Firm Reg. No. LC26000548

NO.	DESCRIPTION	DATE
1	HPB FIRST SUBMITTAL	April 15, 2019
2	HPB FINAL SUBMITTAL	May 6, 2019

DATE OF ISSUE	DRAWN BY
04/15/19	-
SCALE	CHECKED BY
-	-

PROJECT NO. & TITLE
1507 TORINO GARAGE
PROJECT STATUS
PLANNING BOARD FINAL SUBMITTAL



SCALE AS NOTED
GRAPHIC SCALE (AS NOTED)

SEAL & SIGNATURE
This document has been prepared for creative, conceptual or planning purposes only. No warranties are made regarding the design or its adequacy for construction or other purposes.
© Brandon Haw Architecture LLP 2019



DRAWING TITLE
HPB A-072
HISTORICAL CONTEXT - COLOR

NOT FOR CONSTRUCTION