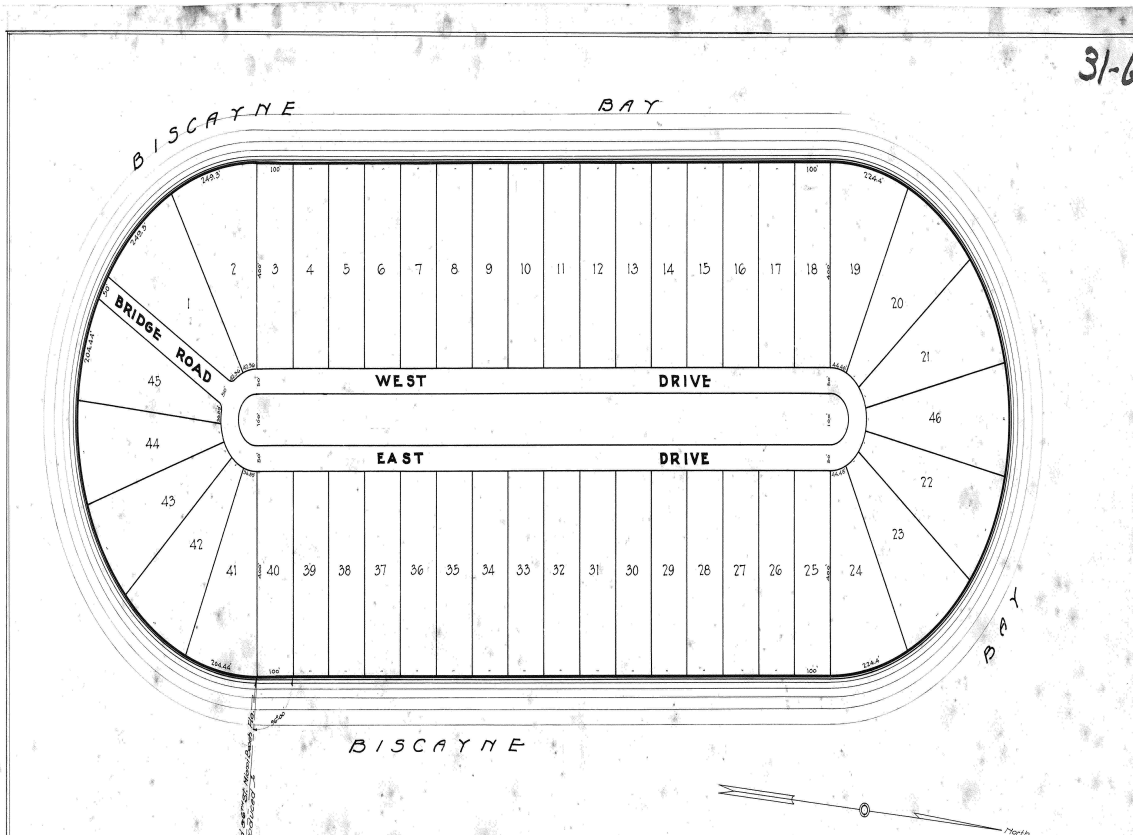
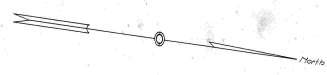


31-6



CORRECTED PLAT
STAR ISLAND

IN
BISCAYNE BAY
 SITUATE IN
SEC. 4 TWP. 54 S. RGE. 42 E.
MIAMI BEACH DADE COUNTY FLA.
 Scale 1"=100' Biscayne Engineering Company Feb. 1930.
 Miami Fla.



13th Mar 20 3:48 PM
 60
 STATE OF FLORIDA
 COUNTY OF DADE
 Notary Public
 [Signature]

Note: Dedication of Streets etc. is filed as a separate Document.

KNOW ALL MEN BY THESE PRESENTS: That the Biscayne Engineering Company a corporation organized and existing under the laws of the State of Florida, has caused to be made the attached Corrected Plat Star Island being a corrected plat of Star Island according to plat thereof recorded in Plat Book 5, of Page 52, Public Records of Dade County, Florida.

That the attached Plat is made for the express purpose of correcting a clerical error which occurred in designating the number of feet from the northeast corner of Alton Road and Sixth Street, Miami Beach, Florida, to the point of beginning of Star Island.

That the dimension should read 2700 feet to the northeast corner of Alton Road and Sixth Street, Miami Beach, Florida, instead of 5250 feet to the northeast corner of Alton Road and Sixth Street, Miami Beach, Florida, as shown on original plat of Star Island, according to plat thereof recorded in Plat Book 5, of Page 52, Public Records of Dade County, Florida.

That the above correction does not change in any manner the physical location of streets, bulkhead on any other part of the island or the approach thereto from the mainland or causeway.

In Witness Whereof the Biscayne Engineering Company has caused these presents to be signed by its President attested by its Secretary and its corporate seal affixed this 13th day of Feb. A.D. 1930.

Attested: [Signature] Secretary BISCAYNE ENGINEERING COMPANY
 [Signature] President

STATE OF FLORIDA, ss.
 County of Dade, ss.
 I, Henry Certify that on this day personally appeared before me, an officer duly authorized to administer oaths and take acknowledgments, John A. Moore and J.J. Bennett, President and Secretary, respectively, of the Biscayne Engineering Company, to me known to be the persons described in and who executed the foregoing instrument and they acknowledged before me that they executed the same freely and voluntarily as such officers for the purposes and uses therein expressed and by and with the authority of its Board of Directors, and the corporate seal affixed thereto by its Secretary is a true and proper seal of said corporation.

Witness my hand and official seal at Miami, Dade County, Florida, this 13th day of February A.D. 1930. [Signature]

My Commission expires 10/18/33. Notary Public, State of Florida at large.

Approved for record [Signature]
 County Engineer Dade County Florida

This plat was approved by a vote passed and adopted by the City Council of Miami Beach Florida this 5th day of August A.D. 1930.

Attest: [Signature] President City Council
 O.K. [Signature]

We hereby certify that the attached Corrected Plat of Star Island is a correct and correct map of such property.

Biscayne Engineering Company
 By [Signature] President
 Registered Engineer No. 125