

# LEGEND

- ⊙ WW EXISTING WATER VALVE
- L/S EXISTING LANDSCAPE AREA
- PL EXISTING PLANTER
- Ⓜ EXISTING ELECTRICAL HANDHOLE
- ⊙ EXISTING STREET LIGHT
- ⊙ EXISTING SIGN
- Ⓜ EXISTING FIBER OPTIC HANDHOLE
- ⊙ TC EXISTING TRASH CAN
- Ⓜ DMH EXISTING DRAINAGE MANHOLE
- Ⓜ SMH EXISTING SEWER MANHOLE
- ⊙ EXISTING TREE
- Ⓜ EXISTING PALM TREE

CROWN CASTLE  
SMALL WIRELESS FACILITIES  
HPB 19-0284 (FL 6485)  
643 16TH STREET

PROPOSED SITE PLAN  
APRIL 8, 2019  
N.T.S.  
R.J. HEISENBOTTLE ARCHITECTS, P.A.  
2199 PONCE DE LEON BLV, CORAL GABLES, FLORIDA 33134  
PHONE: 305.446.7799 / FAX: 305.446.9275  
FLORIDA REGISTRATION NUMBER: AR 0010865

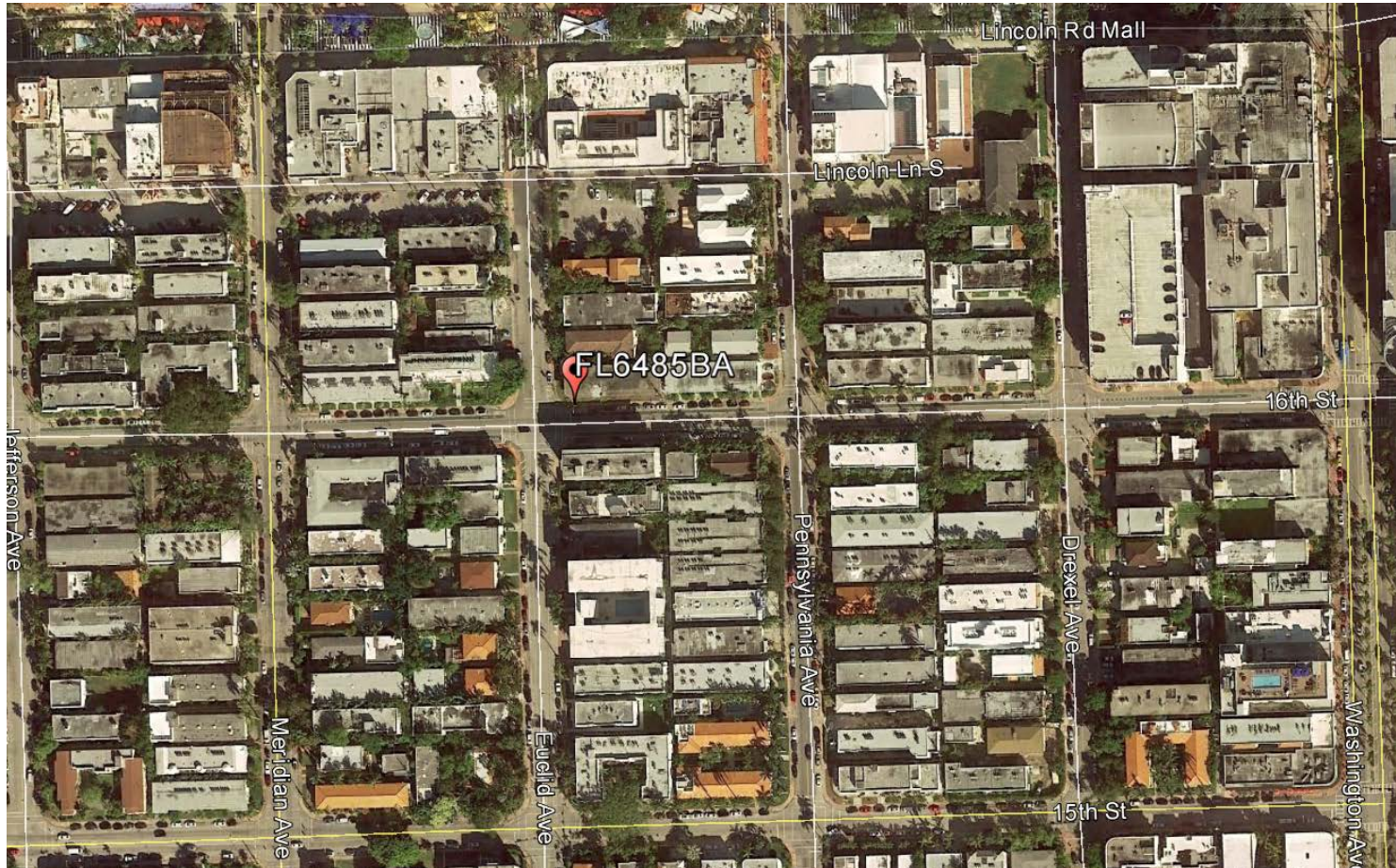


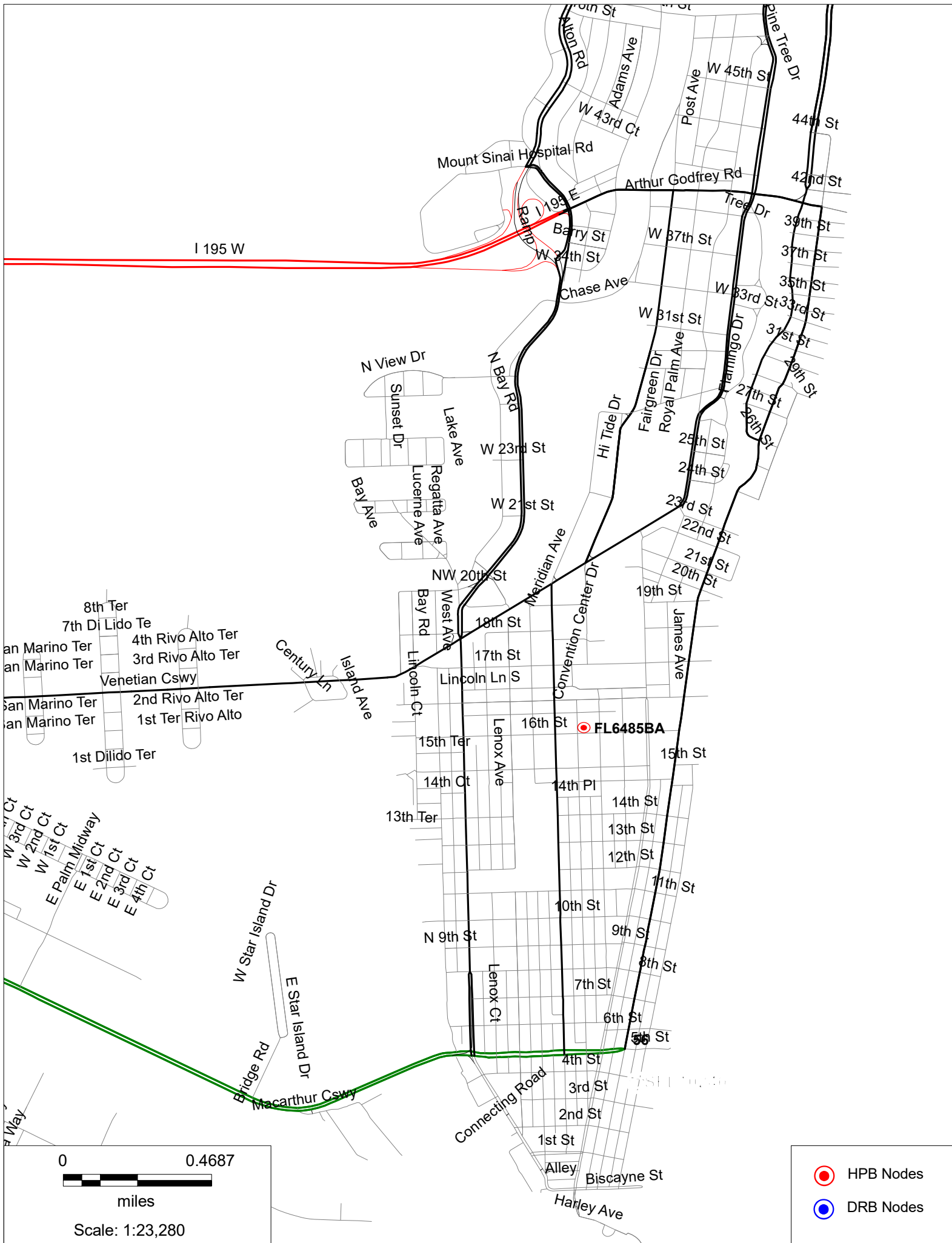


# FL6485BA

643 16<sup>th</sup> St., Miami Beach, FL

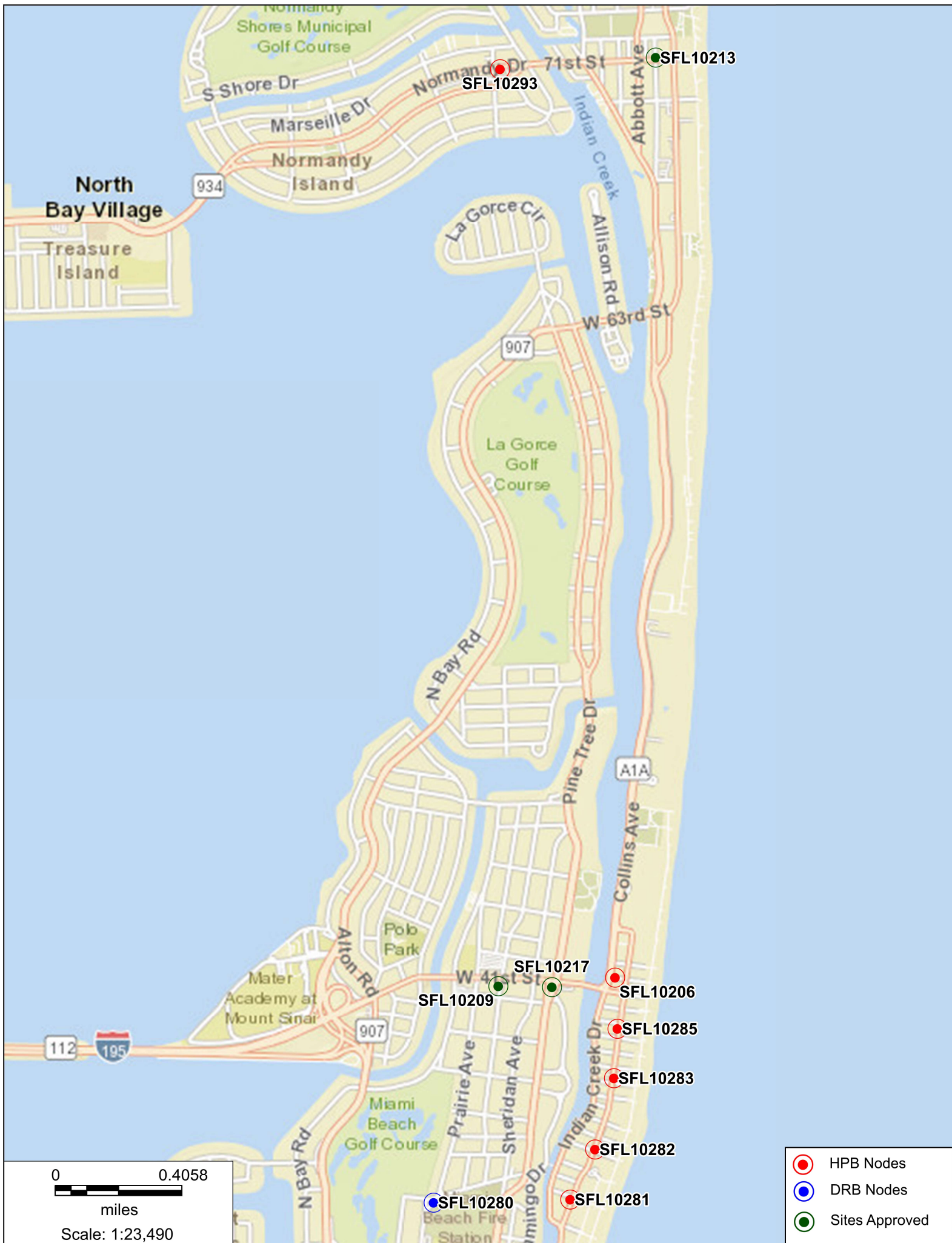
Aerial View



















- HPB Nodes
- DRB Nodes
- Sites Approved







# FL6485BA

643 16<sup>th</sup> St., Miami Beach, FL

Photosim – Proposed Stealth Pole

---





# FL6485BA

643 16<sup>th</sup> St., Miami Beach, FL,  
Photosim - Proposed Stealth Pole

---

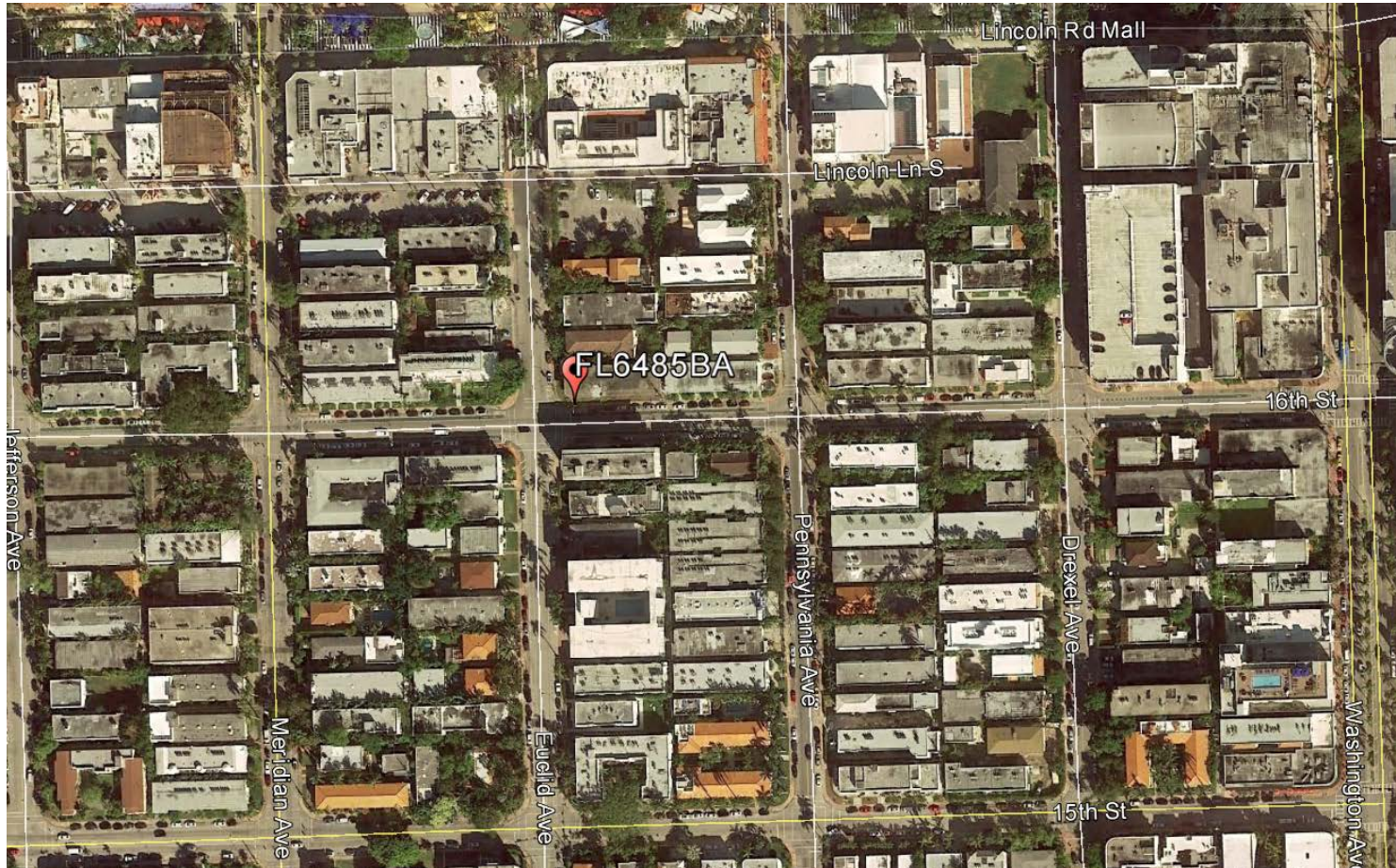




# FL6485BA

643 16<sup>th</sup> St., Miami Beach, FL

Aerial View





# FL6485BA

643 16<sup>th</sup> St., Miami Beach, FL,  
North

---



# FL6485BA

643 16<sup>th</sup> St., Miami Beach, FL,  
East

---





# FL6485BA

643 16<sup>th</sup> St., Miami Beach, FL,  
South

---



# FL6485BA

643 16<sup>th</sup> St., Miami Beach, FL  
West

---

