

CITY OF MIAMI BEACH  
PARKS AND RECREATION

# SPORT FIELDS PRESENTATION



MIAMIBEACH

# WHERE WE ARE

Parks and Recreation  
has 8 programmable athletic sport fields,  
citywide.

# FLAMINGO PARK

Features 4 of 8 programmable fields



# MEMORIAL FIELD

## in Flamingo Park | Field #1

**Size:** 360ft x 195ft

**Sports Accommodated:**

Football, Flag Football, Soccer, Open Play

**Facility Hours:** 6:15a - 9:00p

**Field Uses**

**Youth Programs:**

Parks & Recreation Travel Soccer:

103 Participants

June-May / Monday-Friday /  
5:00p - 8:00p

Saturday-Sunday / 9:00a -  
9:00p

Game Schedule varies on the  
weekends.

**Adult Programs:**

Parks & Recreation Flag Football:

612 Participants yearly

Recurring Seasons / Mondays



**Miami Beach Senior High School:**

Football, Girls Flag Football, Boys and Girls Soccer

158 Participants

September-May Season

Monday-Friday / 3:00p - 9:30p

Dates and Times vary per sport

**Hebrew Academy:**

Middle School Flag Football,  
Girls Flag Football and Soccer

65 Participants

September-April

Monday-Thursday / 3:00p - 5:00p

**Rentals:**

Varies based on field availability after  
High School and programming  
scheduled

# BASEBALL STADIUM

## in Flamingo Park | Field #2



**Size:** 382ft x 356ft

**Sports Accommodated:** Baseball, Flag Football, Soccer

**Facility Hours:** 9:00a - 9:00p

### Field Uses

#### Youth Programs (Outfield):

- Parks & Recreation Flag Football: 42 participants
- September-November Tuesday & Thursday 6:00p - 8:00p

#### Miami Beach Senior High School:

- Baseball: 30 participants
- January-May
- Practice Monday-Friday / 3:00p - 6:30p Saturday 11:00a - 2:00p
- Game days vary Monday-Friday 3:00p - 9:30p

#### Rentals:

- Baseball 45-60 participants weekly
- Recurring Season Sunday / 9:00a - 3:00p

# SOCCER FIELD

## in Flamingo Park | Field #3



**Size:** 240ft x 160ft

**Sports Accommodated:** Soccer and Open Play

**Facility Hours:** 8:00a – 9:00p

### Field Uses

#### **Youth Programs:**

- Parks & Recreation Travel Soccer: 80 participants
- June-May / Monday-Friday / 5:00p - 8:00p
- Saturday-Sunday 9:00a - 9:00p
- Game Schedule varies on the weekends

#### **Miami Beach Senior High School:**

- Soccer: 55 participants
- November-February / Monday-Friday / 3:00p - 5:00p

#### **Rentals:**

- Adult Soccer: 400+ participants weekly
- Recurring Seasons: Tuesday-Sunday
- Tuesday 9:00a - 2:00p, Wednesday 8:00p - 10:00p,
- Thursday 9:00a - 3:00p, Saturday 8:00a - 11:00a & 4:00p - 9:00p
- Sunday 3:00p - 9:00p

# SOFTBALL FIELD

## in Flamingo Park | Field #4



**Size:** 353ft x 316ft

**Sports Accommodated:** Softball, Soccer, and Open Play

**Facility Hours:** 8:00a - 10:00p

### Field Uses

#### **Youth Programs:**

- Parks & Recreation Soccer: 200 participants
  - September-May / Monday-Thursday / 5:45p - 7:45p
- Danny Berry Baseball:
  - 252 participants
  - September-May / Sunday / 9:00a - 1:30p

#### **Adult Programs:**

- Parks & Recreation Kickball & Softball: 1000+ participants yearly
- Recurring Season / Monday-Thursday / 7:00p - 10:00p
- Days and Times vary per season and availability

#### **Miami Beach Senior High School:**

- Softball: 20 Participants
- January-May / Monday-Friday / 3:00p - 5:30p
- Dates and Times vary during the season

#### **Rentals:**

- Varies based on field availability after High School and Programming scheduled

# POLO PARK

## BASEBALL FIELD | Field #5

**Size:** 265ft x 250ft

**Sports Accommodated:** Baseball, Cross Country, Flag Football, Soccer, Softball, Open Play

**Facility Hours:**

Monday-Friday 3:50p – Sunset

Saturday-Sunday 8:00a - Sunset



### Field Uses

#### **Youth Programs:**

Danny Berry Baseball: 20 participants

September-May / Thursday / 5:30p - Sunset

Usage varies on availability based on school needs

#### **Nautilus Middle School:**

Cross Country, Flag Football, Soccer, Softball

140 participants

September-May / Monday-Friday / 3:50p - 6:00p

Days and Times vary per season

# NORTH SHORE PARK

## BASEBALL FIELD | Field #6



**Size:** 382ft x 260ft

**Sports Accommodated:** Baseball,  
Open Play

**Facility Hours:** 8:00a - 9:00p

### Field Uses

#### **Youth Programs:**

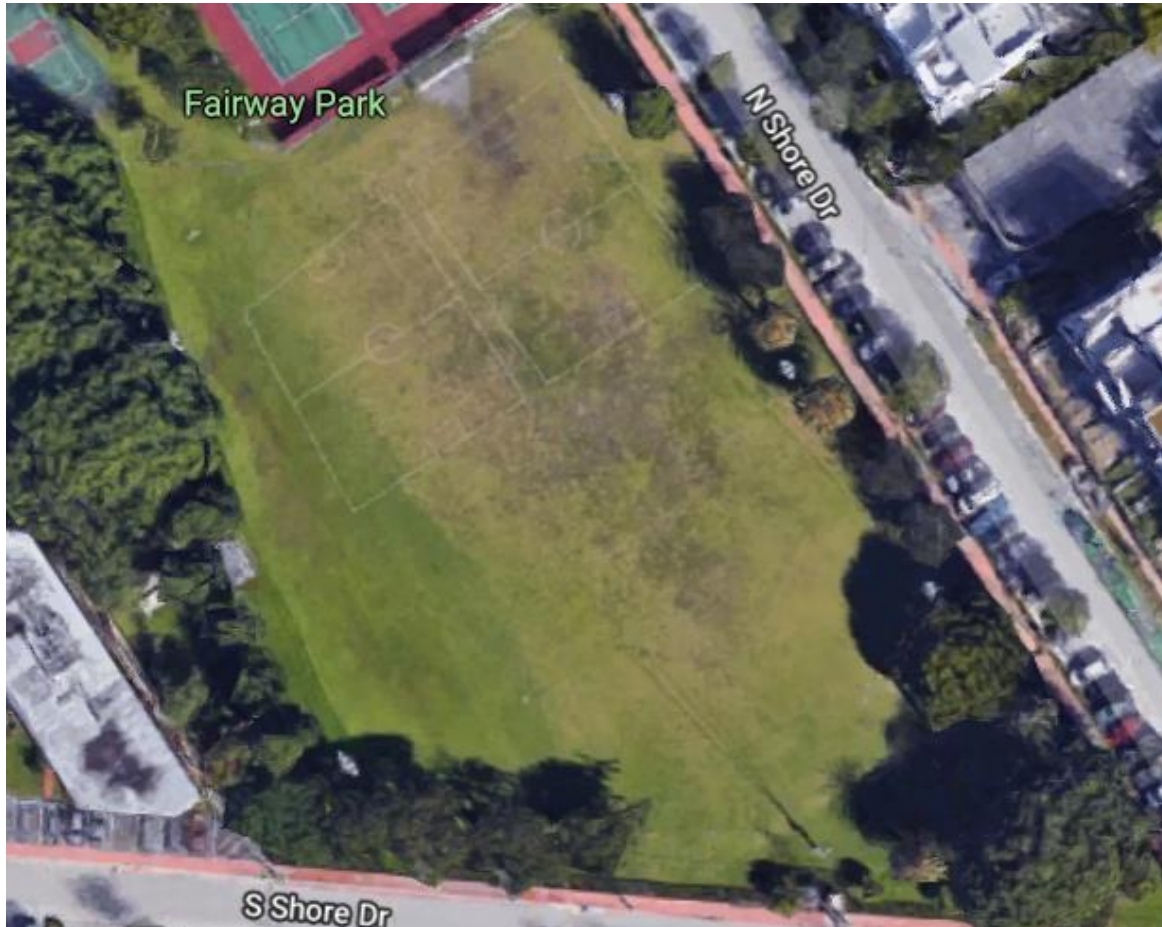
- Danny Berry Baseball:
- September-May: 462 Participants
- Monday-Friday / 3:00p - 9:00p
- Saturday-Sundays / 9:00a - 8:00p

#### **Additional Field Usage:**

- October - Hispanic Heritage Festival – 2500 Participants
- October- Trunk or Treat – 1000 Participants
- December – Winter Wonderland – 3000 Participants
- March/April – Easter Eggstravaganza – 2000 Participants

# FAIRWAY PARK

## MULTI-PURPOSE FIELD | Field #7



Size: 320ft x 220ft

Sports Accommodated: Baseball, Football, Soccer and Open Play

Facility Hours: 8:00a - 8:45p

### Field Uses

- Miami Beach Junior Hi-Tides  
Football: 60 Participants
- September-December /  
Tuesday-Thursday / 6:30p -  
8:30p
- **Note:** Usage will change after  
new CIP design

# NORMANDY ISLE PARK

## MULTI-PURPOSE FIELD | Field #8



Size: 305ft x 105ft

Sports Accommodated: Soccer and Open Play

Facility Hours: 8:00a - 8:45p

### Field Uses

#### Youth Programs:

- Parks & Recreation Soccer: 203 participants
- September-May / Monday-Thursday / 5:45p - 7:45p
- Note: Usage will change after new CIP design

# **CURRENT NEEDS & SHORT TERM GOALS**

## **BASEBALL PROGRAMMING**

# NORTH SHORE PARK



## Currently used for all baseball league divisions:

- Introduction to Baseball | Age group: 3-4
- Pee Wees | Age group: 5-6
- Rookies | Age group: 7-8
- Minors | Age group: 9-10
- Majors | Age group: 11-13

## Proposed use:

- 2 Fields
  - Introduction to Baseball through Majors Division
  - Age group: 3-13

# NORMANDY ISLE PARK



## Current use:

- Multipurpose field

## Proposed use:

- Introduction to Baseball and Pee Wees
  - 2 fields, with new CIP design
- Age group: 3-6

# FLAMINGO PARK SOFTBALL FIELD



## Currently used for:

- Pee Wees | Age group: 5-6
- Rookies | Age group: 7-8

## Proposed uses:

- Introduction to Baseball through Majors Division
- Age group: 3-13

# POLO PARK



## Currently used for:

- Rookies and Minors
- Age group: 7-10

## Proposed uses:

- Introduction to Baseball through Minors Division
- Age group: 3-10

# IDENTIFIED BASEBALL GAPS

## Identified Needs:

- Addition of two (2) fields to accommodate Introduction to Baseball through Majors Division
- Age group: 3-13



# **CURRENT NEEDS & SHORT TERM GOALS**

## **SOCCKER PROGRAMMING**

# FLAMINGO PARK SOCCER FIELD



## Current use:

- Travel Soccer (12 & Under)
- 2 fields

# FAIRWAY PARK



## Current use:

- Open field space (unprogrammed)

## Proposed use:

- 1 field for Travel Soccer (12 & Under) and Parks and Recreation Youth Soccer Programming with new CIP design

# FLAMINGO PARK MEMORIAL FIELD



## Current use:

- Travel Soccer (13 & Up)
- 1 field

# IDENTIFIED SOCCER GAPS

## Identified Needs:

- Addition of one (1) field for Travel Soccer - 12 & Under
- Addition of two fields for Travel Soccer - 13 & Up

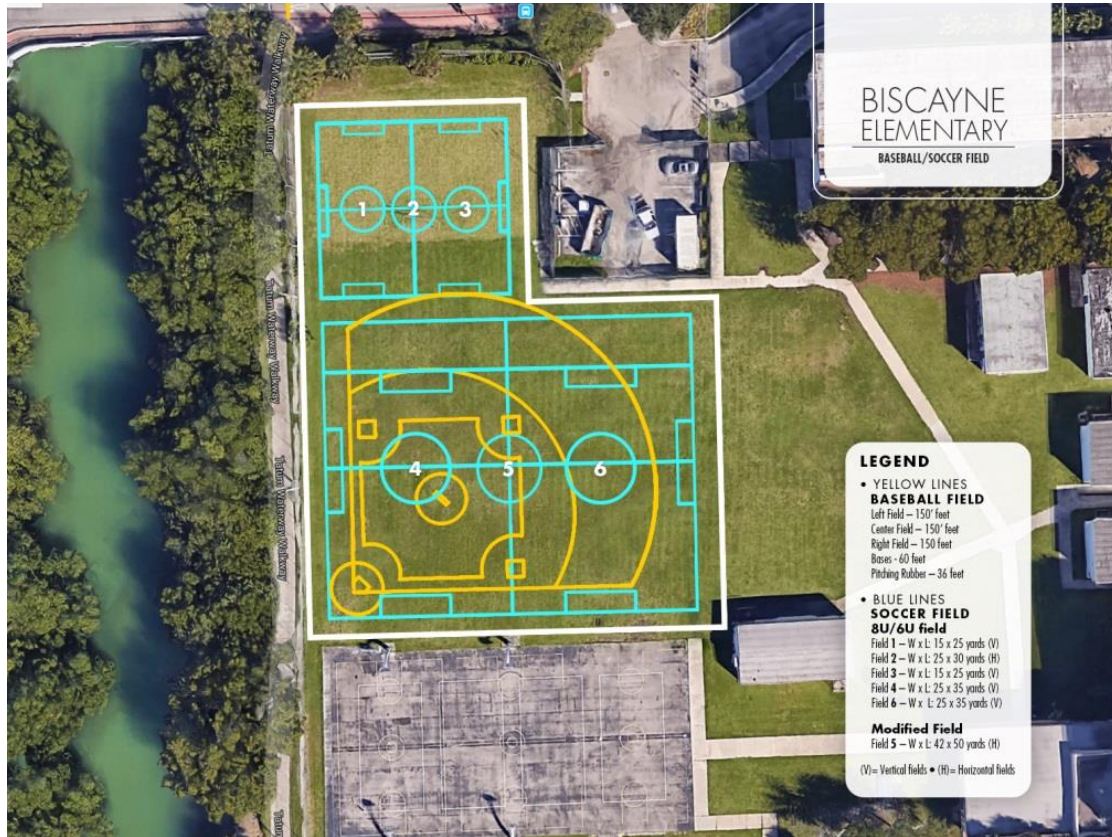


# RECOMMENDATIONS & COST

Recommendations and costs for additional/repurposed fields:

- Biscayne Elementary
- Polo Park
- Miami Beach Senior High School
- North Shore Park Field
- West Lots

# BISCAYNE ELEMENTARY



## New multipurpose fields to accommodate:

- Introduction to Baseball through Rookies Baseball Division | Age group: 3-8
- Parks and Recreation multipurpose for other sports and open community play
- Cost estimate: \$1,270,169.30
  - \* Inclusive of site amenities such as bleachers, lighting, netting, etc.

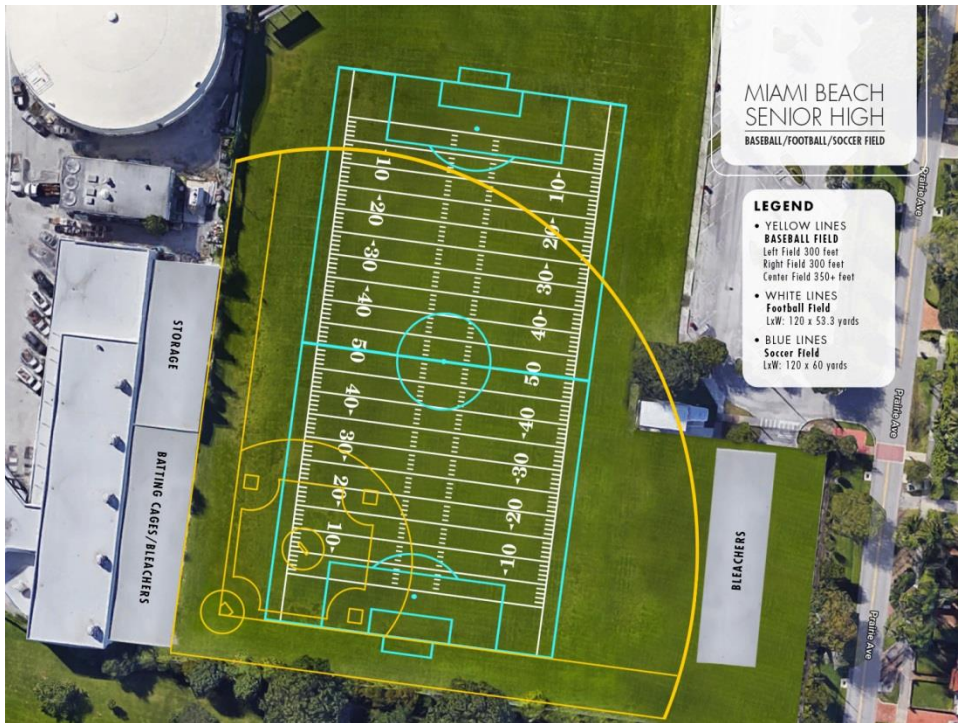
# POLO PARK

## Fields to accommodate:

- Parks and Recreation Programming: Danny Berry Baseball Introduction to Baseball through Minors Division, age group: 3-10
- Nautilus Middle School Usage
- Parks and Recreation Programming: 12 & Under Soccer
- Parks and Recreation multipurpose for other sports and open community play
- Cost estimate: \$614,336.00
  - \* Inclusive of site amenities such as soccer goals, lighting, netting, etc.



# MIAMI BEACH SENIOR HIGH



## Fields to accommodate:

- High School Football
- High School Baseball
- High School Soccer
- Parks and Recreation Programming: Danny Berry Baseball
  - Introduction to Baseball through Majors Division, age group: 3-13
- Parks and Recreation Programming: 13 & Up soccer, and 12 & Under soccer
- Parks and Recreation multipurpose use for other sports and open community play
- Cost estimate: \$1,737,024.00
  - \* Inclusive of site amenities such as bleachers, lighting, netting, etc.

# LONG TERM GOALS

# NORTH SHORE PARK

- Field Re-purposing (G.O. Bond Project)
- Potential design to include expanding into the footprint of existing youth center parking lot
- Potential to gain 1-2 more fields
- Multi-level baseball divisions
- Parks and Recreation multipurpose for other sports and open community play

# WEST LOTS (85-86 ST & COLLINS AVE)

## Preferred Option



(2) Multi-Use Fields and a Multipurpose area to accommodate:

- Parks and Recreation Programming: 12 & Under Soccer
- Parks and Recreation multipurpose for other sports and open community play
- Cost estimate: \$2,436,039.68  
\* Inclusive of site amenities such as bleachers, lighting, netting, etc.

# WEST LOTS (85-86 ST & COLLINS AVE)

## Micro Soccer Fields Option



West Lot 1: (2) Micro Soccer Fields  
West Lot 2: (2) Micro Soccer Fields

### (4) Fields to Accommodate:

- Parks and Recreation multipurpose for other sports and open community play
  - Cost estimate (Natural Turf): \$1,379,677.48
  - Cost estimate (Artificial Turf): \$1,682,442.28
- \* Both estimates inclusive of site grading, sodding, sidewalks, drinking fountains/electrical/plumbing work, landscaping, safety lighting, and sport lighting.

**THANK YOU**