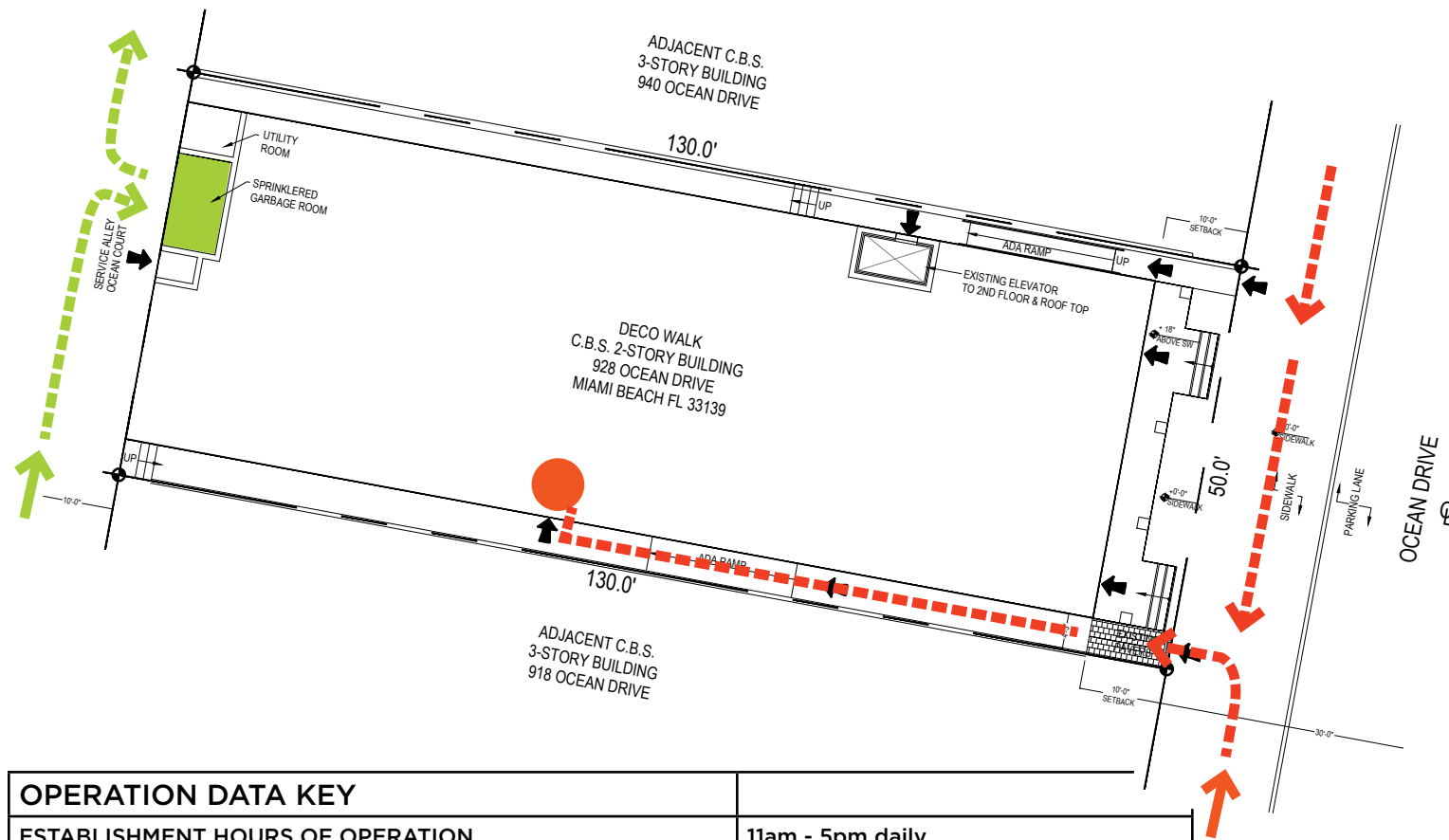







operational plan



OPERATION DATA KEY	
ESTABLISHMENT HOURS OF OPERATION (Hours of operation at the Rooftop bar are subject to City code unless the Historic Preservation Board approves a variance from the closing time.)	11am - 5pm daily Rooftop Bar to close by 8pm
ESTABLISHMENT HOURS OF ENTERTAINMENT (no Entertainment to be provided outside or on Rooftop)	DJ hours: 11am - 5pm daily Live Performers: 5pm - 2am
EMPLOYEES	50 employees 20 working at one time at peak hours
SANITATION TRUCK ROUTE (ONE WAY) BY 'WASTE MANAGEMENT' DAILY PICKUP 7AM - 10AM TRUCK SIZE XX' L X XX' W	
TRASH ROOM LOCATION ROOM SIZE: 9'10"W X 5'11"D X 14'-5"H	
UNLOADING ZONE / DELIVERY PARKING AREAS COMPANY: CHENEY BROS. (4) SPACES ON THE SOUTHEAST SIDE OF 9TH STREET (4) SPACES ON THE SOUTHEAST SIDE OF 10TH STREET LOADING TIMES WITH PERMIT: MONDAY - SATURDAY 7AM - 1PM, 30 MINUTES MAXIMUM	
DELIVERY ROUTE BY FOOT TO ESTABLISHMENT FROM LOADING ZONE (LZ)	
DELIVERY ENTRANCE	
BICYCLE PARKING AREAS	