

CLIENT:

MIAMI BEACH

CITY OF MIAMI BEACH

1700 CONVENTION CENTER DRIVE

MIAMI BEACH, FL 33139

PRIME CONSULTANT:



Calvin, Giordano & Associates, Inc.
1800 Eller Drive, Suite 600, Fort Lauderdale, Florida 33316
Phone: 954.321.7791 • Fax: 954.321.9807

CERTIFICATES OF AUTHORIZATION:
LANDSCAPE ARCHITECTURE: LC00000339
ENGINEERING: 514
SURVEYING: 6791

SERVICES PROVIDED:
LANDSCAPE ARCHITECTURE
CIVIL ENGINEERING
COASTAL ENGINEERING
ELECTRICAL ENGINEERING
SURVEYING & MAPPING
COST ESTIMATING

CONCEPTUAL DESIGNER:
WEST 8
333 HUDSON STREET
SUITE 905
NEW YORK CITY, NY 10013

ARCHITECTURAL CONSULTANT:
SYNALOVSKI ROMANIK SAYE, LLC
1800 ELLER DRIVE
SUITE 500
FORT LAUDERDALE, FL 33316
FIRM LICENSE: AA26001863

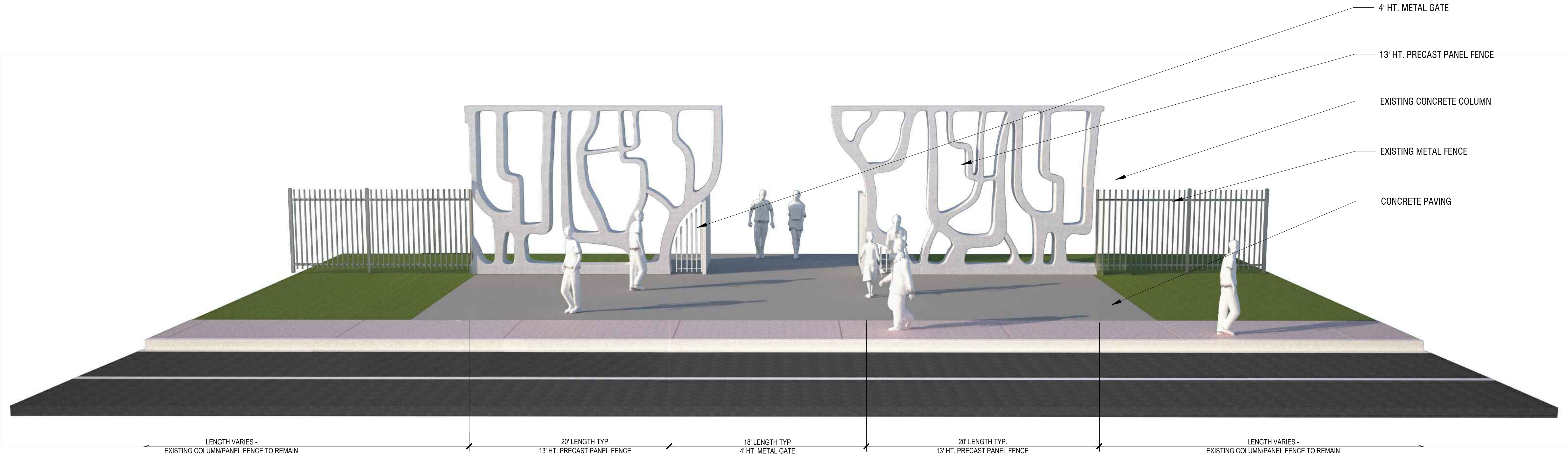
GEOTECHNICAL CONSULTANT:
NUTTING ENGINEERS OF FLORIDA, INC.
2051 NW 112TH AVENUE
SUITE 120
MIAMI, FL 33176
CERTIFICATE OF AUTHORIZATION: XXXX

NORTH SHORE OPEN SPACE PARK

BETWEEN 79TH AND 87TH STREETS,
EAST OF COLLINS AVENUE

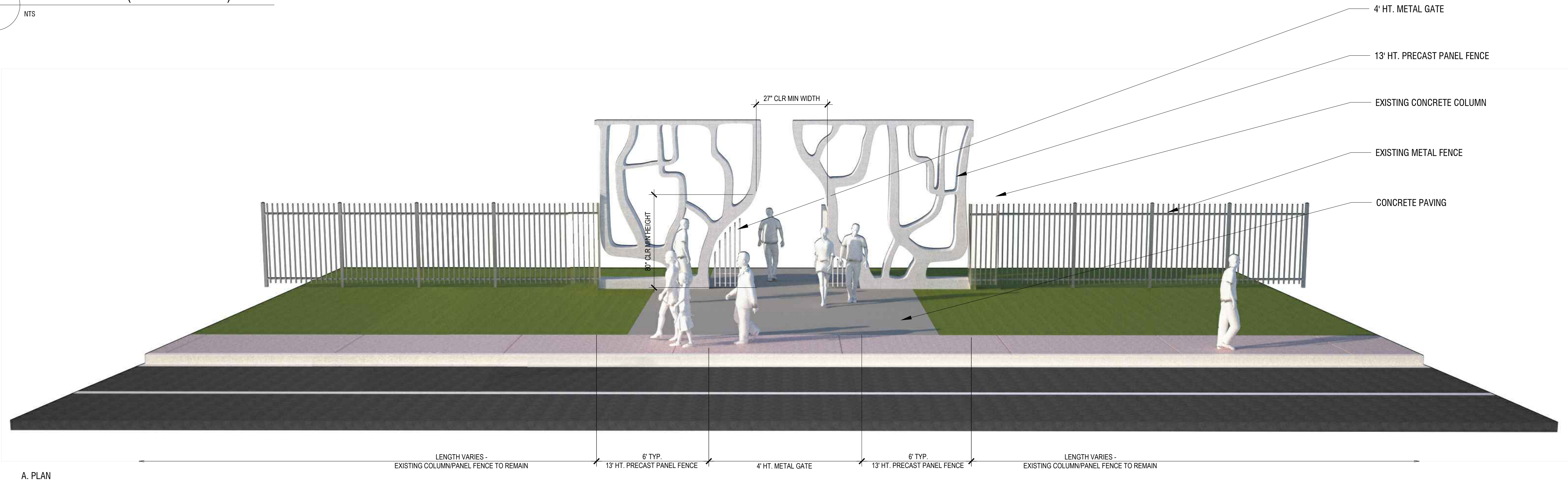
SEAL:
REVISIONS: 1 2 3 4 5 6 7 8 9 10

SUBMITTAL: 30% SD
SCALE:
DATE: NOV 14, 2016
CGA PROJECT NUMBER:
SHEET TITLE: DETAILS - GATEWAYS
SHEET NUMBER: L906



1 MAJOR GATEWAY (COLLINS AVENUE)

NTS



3 MINOR GATEWAY (COLLINS AVENUE)

NTS

CLIENT:
MIAMI BEACH
CITY OF MIAMI BEACH
1700 CONVENTION CENTER DRIVE
MIAMI BEACH, FL 33139



Calvin, Giordano &
Associates, Inc.
1800 Eller Drive, Suite 600, Fort Lauderdale,
Florida 33316
Phone: 954.521.7791 • Fax: 954.521.9807
CERTIFICATES OF AUTHORIZATION:
LANDSCAPE ARCHITECTURE: LC00000339
ENGINEERING: 514
SURVEYING: 6791
SERVICES PROVIDED:
LANDSCAPE ARCHITECTURE
CIVIL ENGINEERING
COASTAL ENGINEERING
ELECTRICAL ENGINEERING
SURVEYING & MAPPING
COST ESTIMATING

CONCEPTUAL DESIGNER:
WEST 8
333 HUDSON STREET
SUITE 905
NEW YORK CITY, NY 10013

ARCHITECTURAL CONSULTANT:
SYNALOVSKI ROMANIK SAYE, LLC
1800 ELLER DRIVE
SUITE 500
FORT LAUDERDALE, FL 33316
FIRM LICENSE: AA26001863
GEOTECHNICAL CONSULTANT:
NUTTING ENGINEERS OF FLORIDA, INC.
2051 NW 112TH AVENUE
SUITE 126
MIAMI, FL 33176
CERTIFICATE OF AUTHORIZATION: XXXX

NORTH SHORE OPEN SPACE PARK

BETWEEN 79TH AND 87TH STREETS,
EAST OF COLLINS AVENUE

SEAL:

- REVISIONS:
- 1
 - 2
 - 3
 - 4
 - 5
 - 6
 - 7
 - 8
 - 9
 - 10

SUBMITTAL:
30% SD

SCALE:

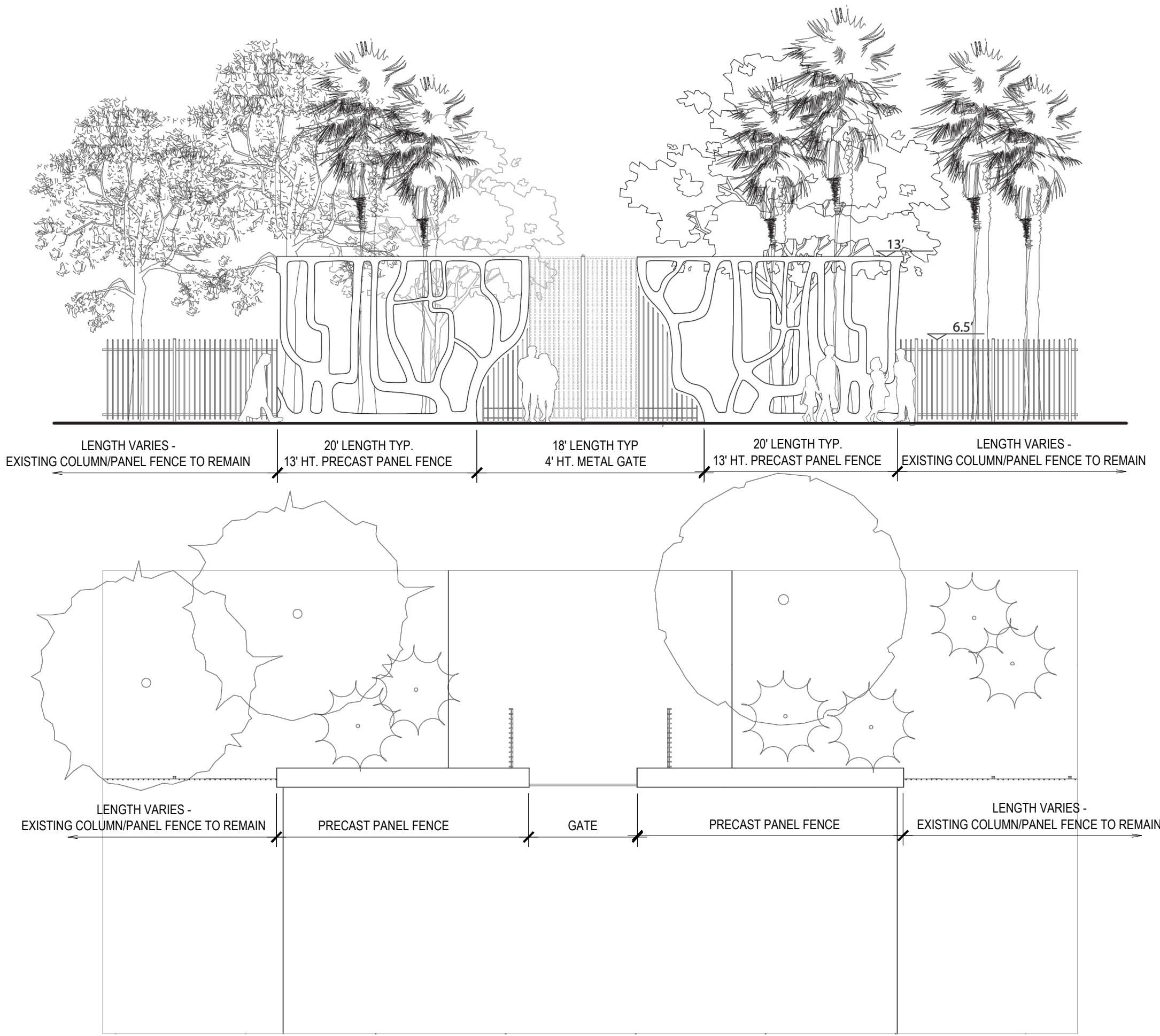
DATE:
NOV 14, 2016

CGA PROJECT NUMBER:

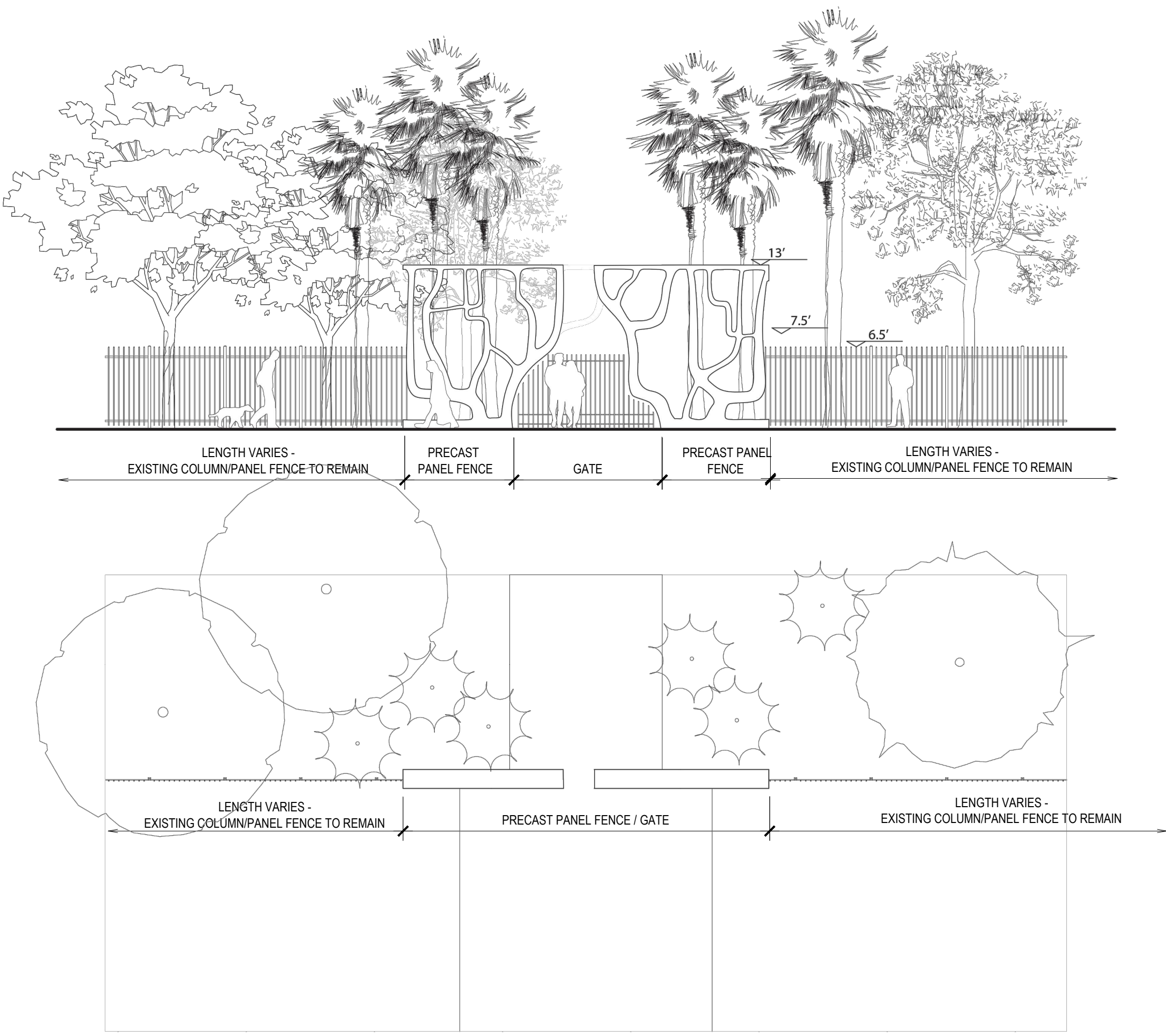
SHEET TITLE:
DETAILS - GATEWAYS

SHEET NUMBER:

L907



1 MAJOR GATEWAY (COLLINS AVENUE)
- NTS



2 MINOR GATEWAY (COLLINS AVENUE)
- NTS