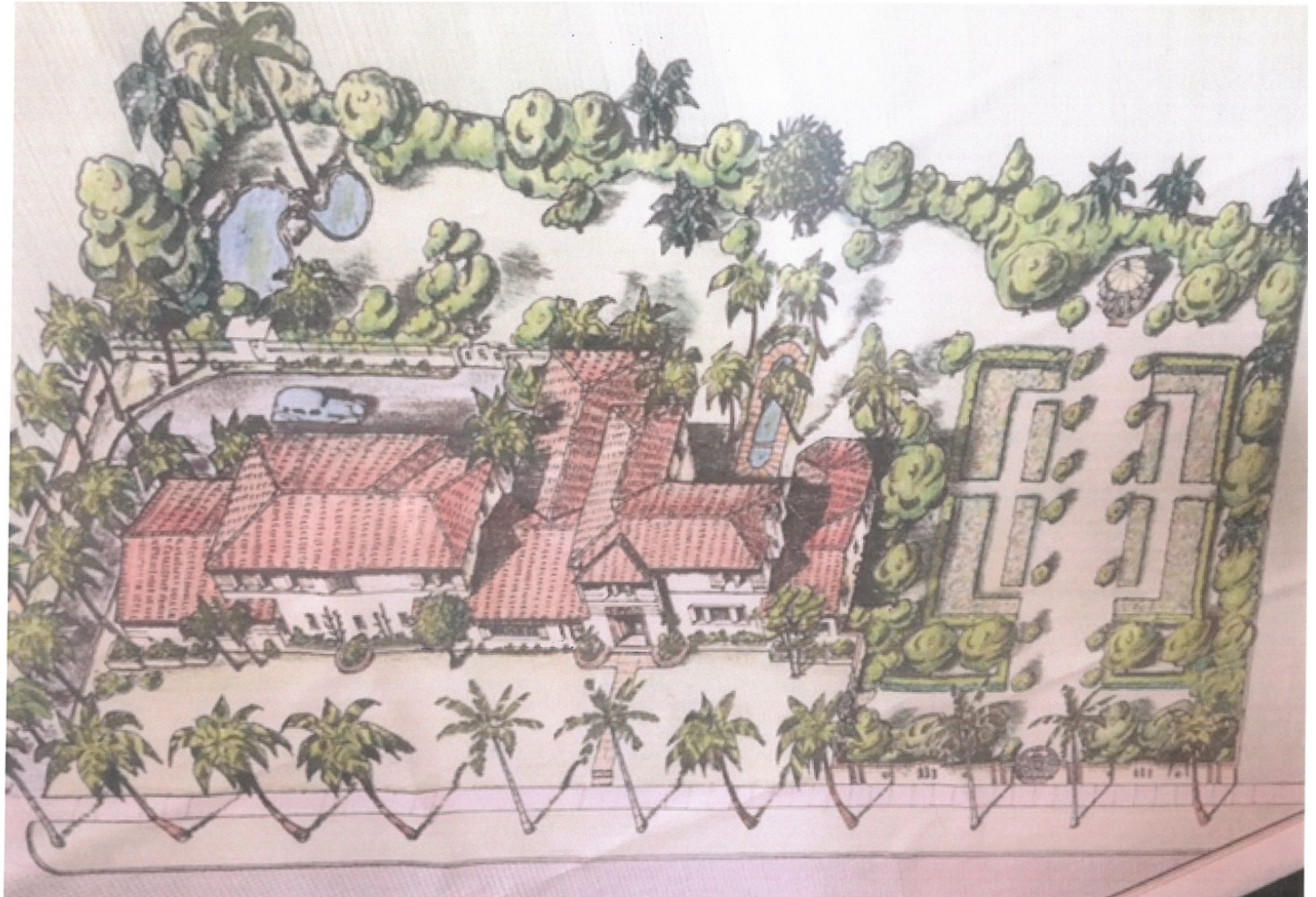


# G-1.23 HISTORIC DATA

- ORIGINALLY BUILT IN 1936 AND WAS PART OF A LARGER COMPLEX WHICH INCLUDED THE CURRENT NEIGHBORING HOUSE.

- IN THE 1950S, AN ACCESSORY STRUCTURE WAS BUILT IN THE REAR YARD.

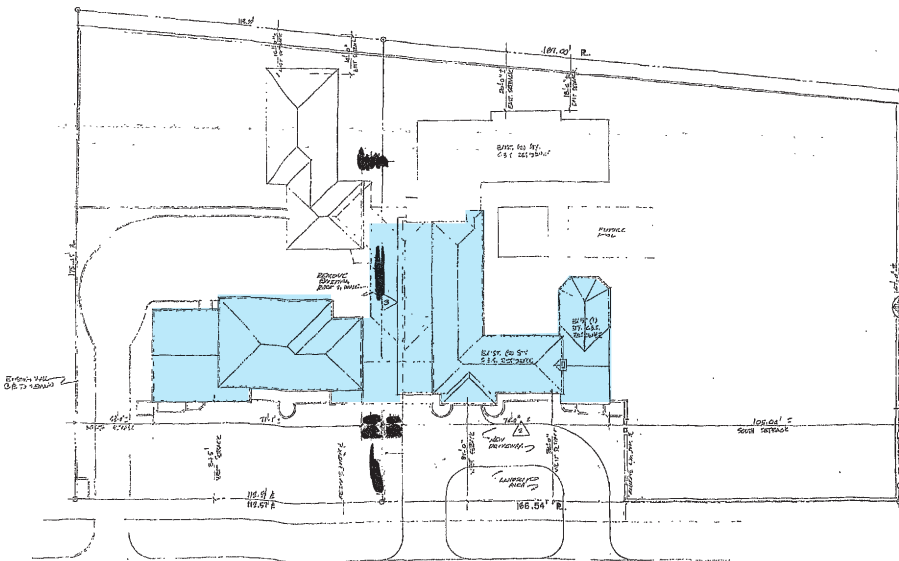
- IN 1994, A CORRIDOR WAS CONSTRUCTED WHICH CONNECTED THE ACCESSORY STRUCTURE TO THE MAIN BUILDING.



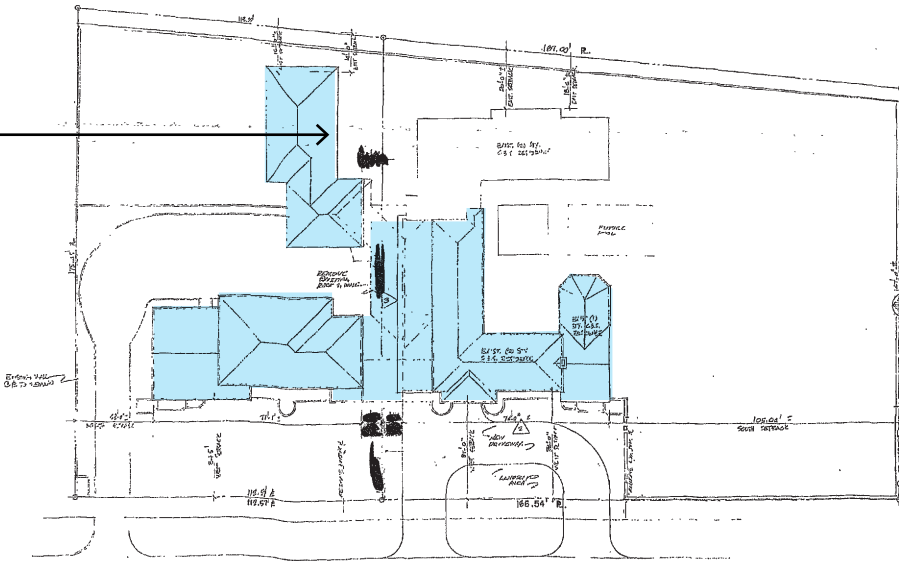


# G-1.24 SITE HISTORY

1936 ORIGINAL

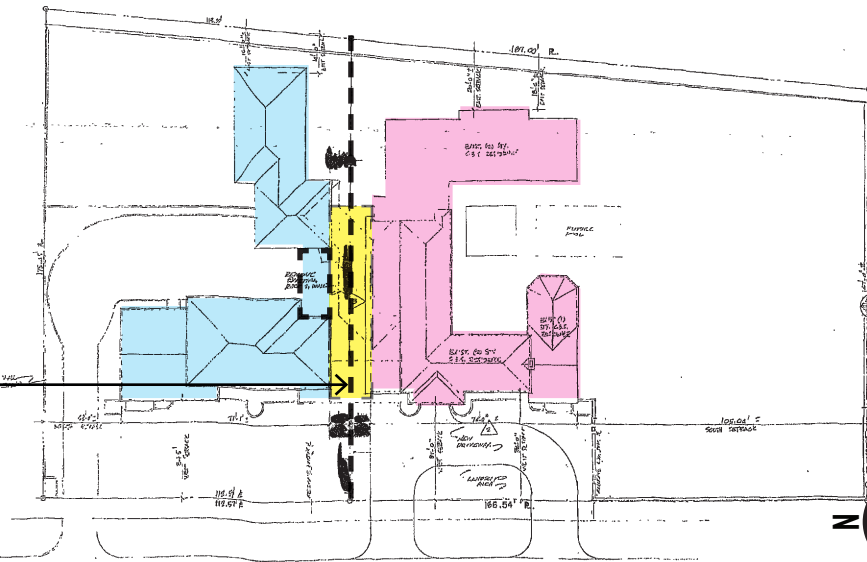


ACCESSORY STRUCTURE ADDITION



1954 ACCESSORY ADDITION

DEMOLITION OF A PORTION OF THE ORIGINAL HOUSE



1993 LOT SPLIT