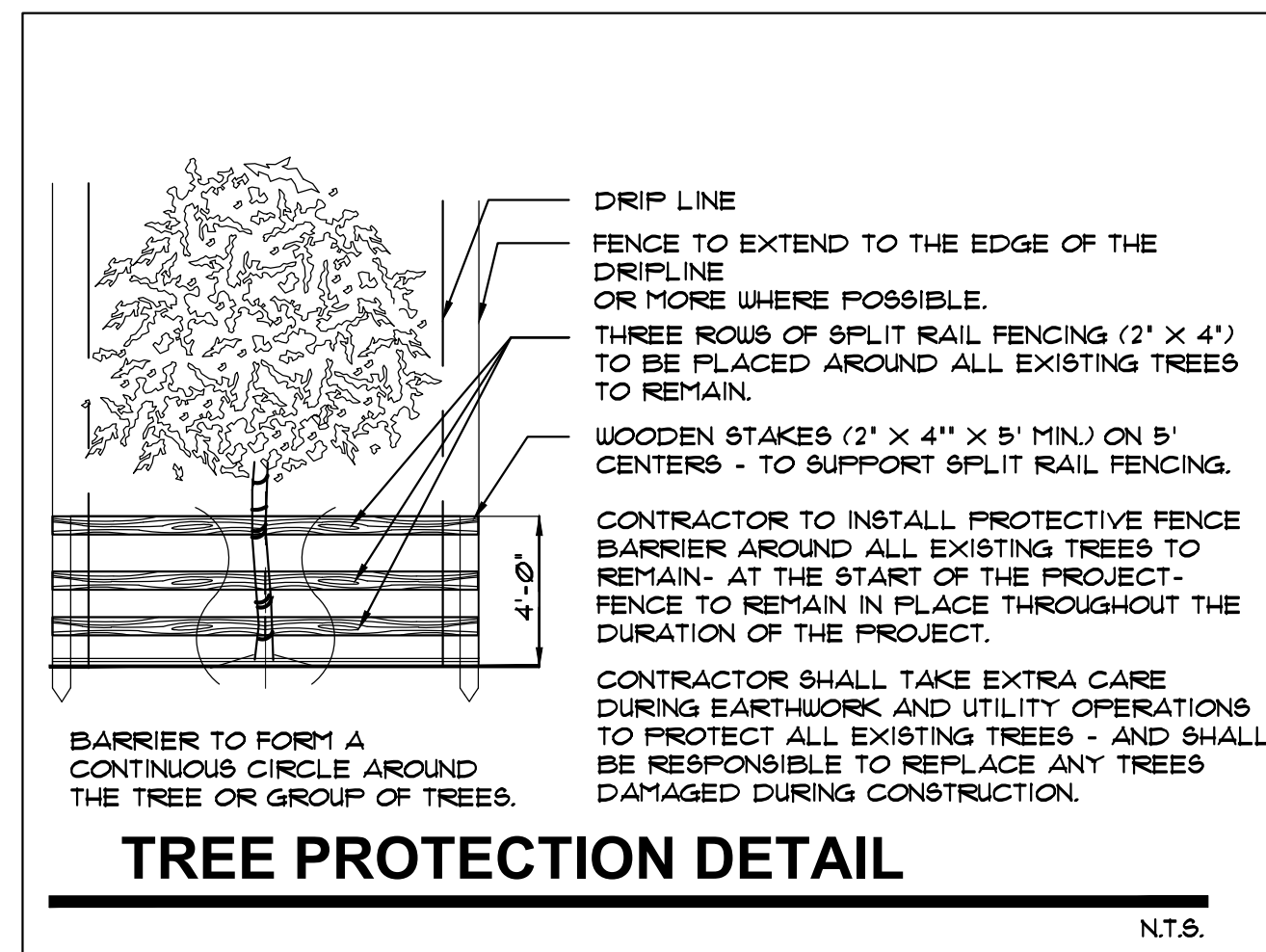


W. 42nd Street



TREE PROTECTION DETAIL

N.T.S

NOTES:

1. A WRITTEN TREE REMOVAL PERMIT IS REQUIRED FROM THE LOCAL GOVERNING AGENCY PRIOR TO REMOVAL OF ANY TREES OR PALMS FROM THE SITE.
2. SEE LANDSCAPE PLANS FOR PROPOSED LANDSCAPE PLANTINGS, LANDSCAPE LEGEND, PLANTLIST, SPECIFICATIONS, DETAILS, ETC.
3. THE CONTRACTOR SHALL REMOVE ALL TREES AND HEDGES AS PER PLANS AND AS APPROVED BY THE LOCAL GOVERNING AGENCIES (THE CITY OF MIAMI BEACH). TREES, PALM AND HEDGE MATERIAL SHALL INCLUDE ALL TRUNKS, STUMPS AND ROOTS. ALL EXCESS DEBRIS SHALL BE REMOVED FROM THE SITE AND DISPOSED OF AT AN APPROVED SITE. ALL HOLES AND DEPRESSIONS SHALL BE BACKFILLED WITH CLEAN, APPROVED BACKFILL.
4. LOCATIONS SHOWN FOR THE EXISTING TREES AND PALMS ARE APPROXIMATE. EXACT LOCATIONS ARE TO BE FIELD VERIFIED BY A REGISTERED LAND SURVEYOR (RLS) PRIOR TO ANY PAVING OR ANY OTHER SUCH WORK WHICH WILL BE IMPACTED BY ANY TREES OR PALMS TO REMAIN.
5. ALL INVASIVE EXOTIC VEGETATION AND ANY OTHER PLANTS LISTED AS CATEGORY 1 ON THE FLORIDA EXOTIC PEST PLANT COUNCIL'S LIST OF FLORIDA'S MOST INVASIVE SPECIES SHALL BE REMOVED FROM THE SITE. THE CONTRACTOR SHALL GUARANTEE CONTROL OF RE-INVASION.

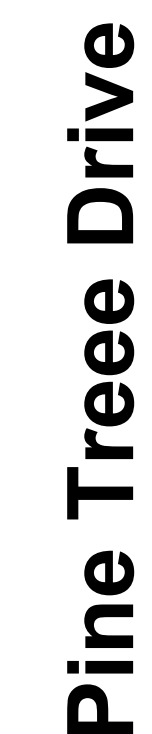
A WRITTEN TREE REMOVAL PERMIT IS REQUIRED FROM THE CITY OF MIAMI BEACH PRIOR TO REMOVAL OF ANY TREES OR PALMS FROM THIS SITE.

SEE LANDSCAPE PLANS FOR LANDSCAPE
PLANTINGS PLANTLIST, SPECIFICATIONS, DETAILS,
ETC.

[illegible]

TREE DISPOSITION PLAN

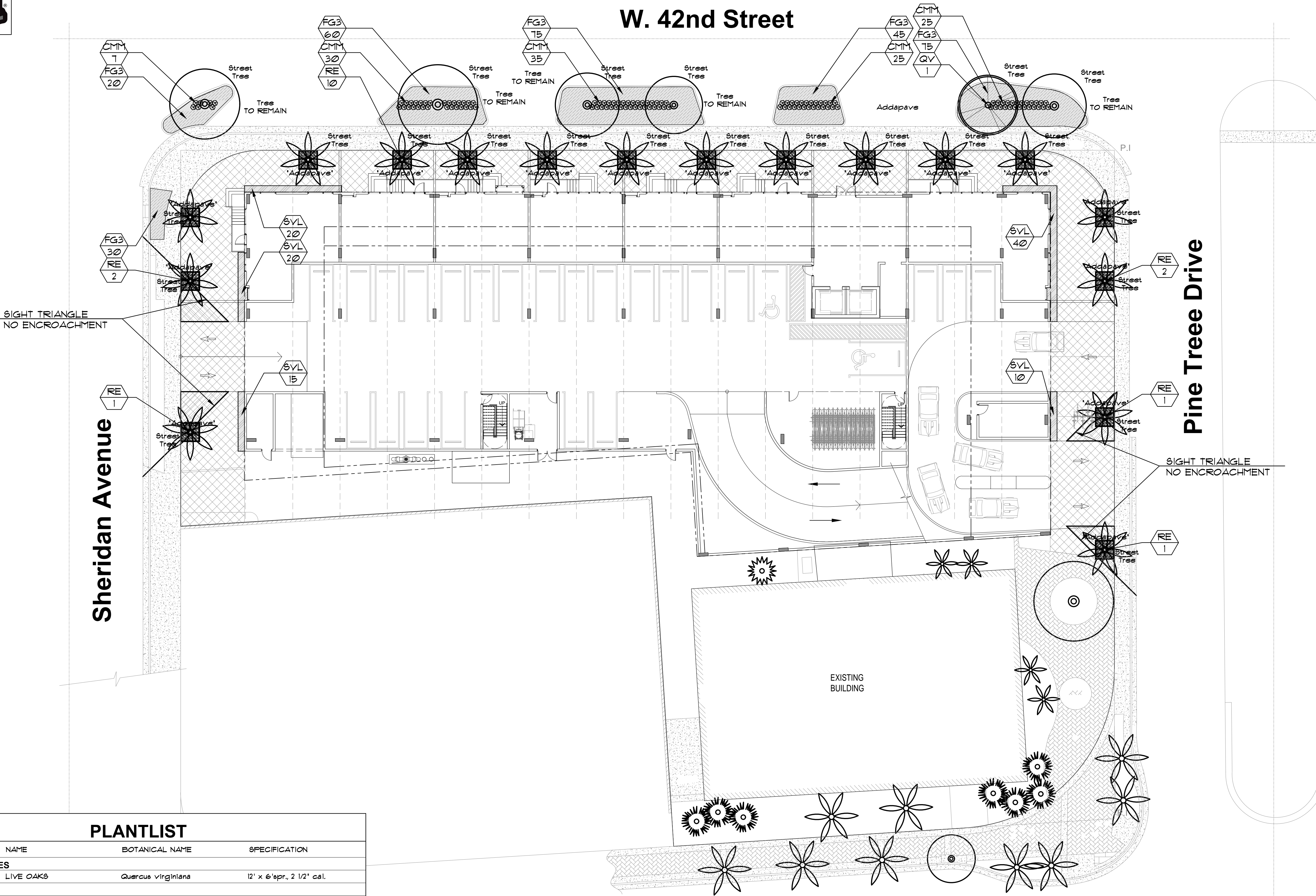
TD-1



W. 41st Street
Arthur Godfrey Road



HD-1



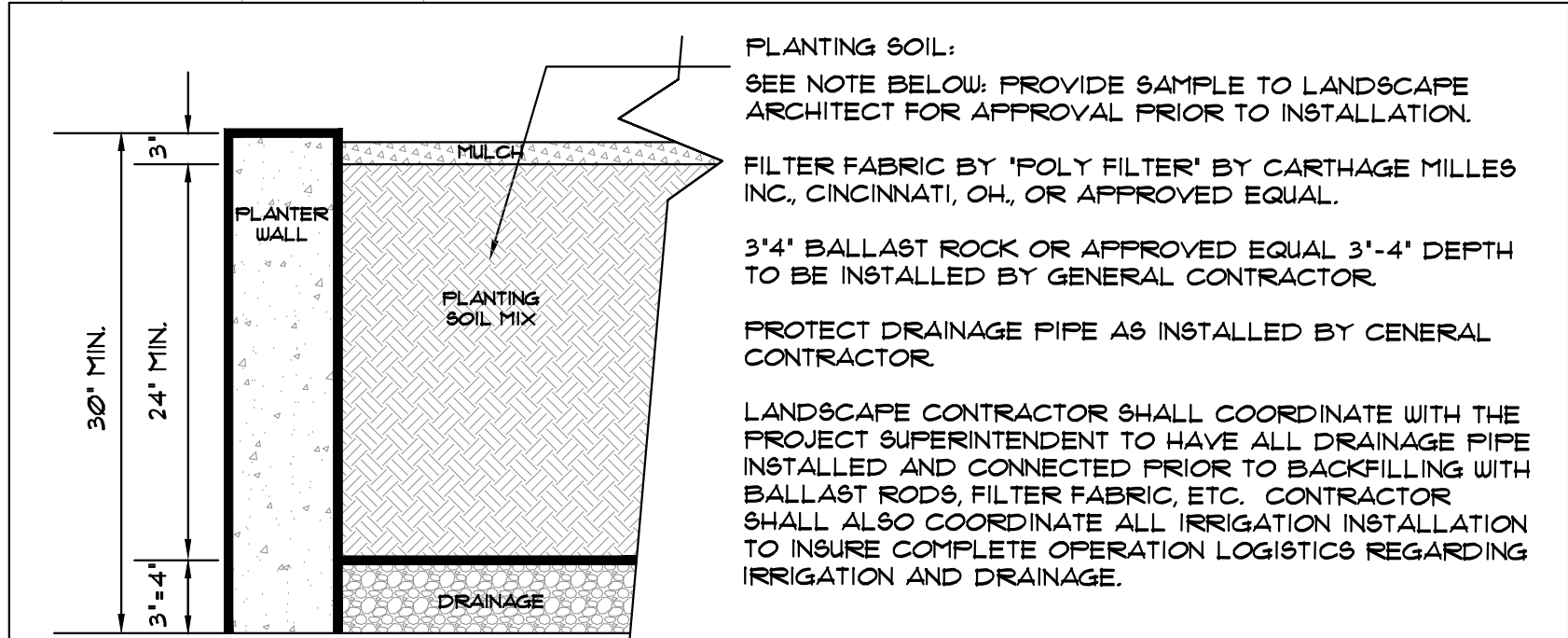
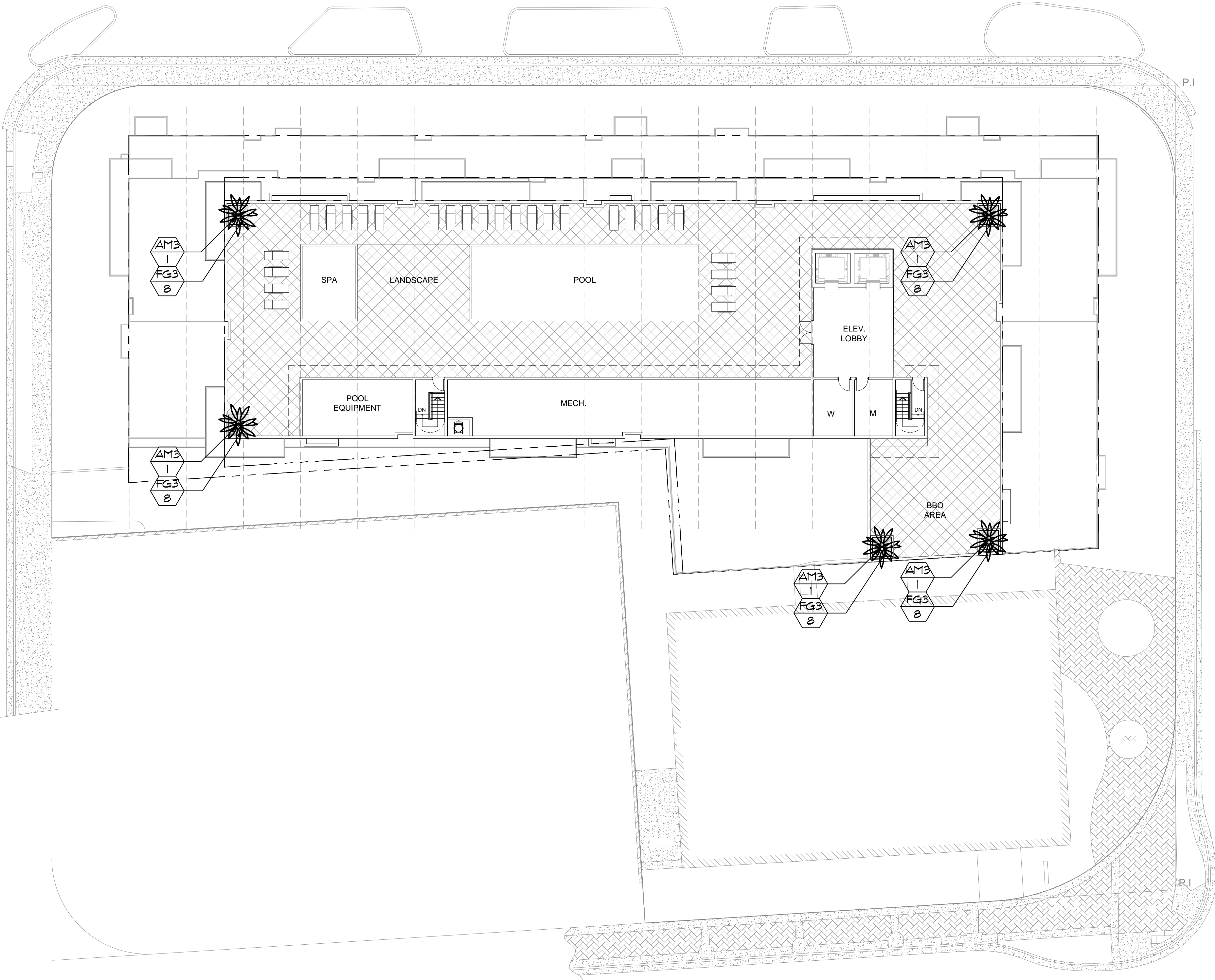
PLANTLIST						
SYM.		NATIVE	*	NAME	BOTANICAL NAME	SPECIFICATION
PROPOSED TREES						
QV	YES	1		LIVE OAKS	Quercus virginiana	12' x 6'spr., 2 1/2' cal.
PALMS						
RE	YES	17		ROYAL PALMS	Roystonea elata	6' GW, 25' o.a. full head
SHRUBS						
CMM		122		CROTON 'MAMMY'	Codiaeum variegatum	3 gal., 18' x 18', 18' o.c., full
GROUNDCOVERS						
FG3		305		'GREEN ISLAND' FICUS	Ficus 'Green Island'	3 gal., 18' x 18', 18' o.c., full
SVL		240		SANSEVIERIA 'LAURENTII'	Sansevieria trifasciata	3 gal., 18' x 12', 18' o.c. full
TOPSOIL:						
12 C.Y.		TREES, PALMS, SHRUBS AND GROUNDCOVERS				
20 C.Y./-		PINE BARK NUGGETS		MULCH, 3" DEPTH, SPREAD IN PLACE		
---		TOPSOIL, SOD AND MULCH QUANTITIES SHOWN ARE APPROXIMATE, CONTRACTOR TO PROVIDE A UNIT PRICE PER UNIT AND WILL BE PAID ON THAT UNIT PRICE BASIS UPON FINAL INSPECTION AND APPROVAL.				

A WRITTEN TREE REMOVAL PERMIT IS REQUIRED FROM THE CITY OF MIAMI BEACH PRIOR TO REMOVAL OF ANY TREES OR PALMS FROM THIS SITE.

SEE SHEET L-2 FOR ROOF LEVEL LANDSCAPE PLANTINGS.

SEE SHEET L-3 FOR LANDSCAPE DETAILS, NOTES, SPECIFICATIONS, ETC.

SEE SHEET L-4 FOR SILVA CELL DETAILS AND SPECIFICATIONS.



TYPICAL LANDSCAPE PLANTER

N.T.S.

THE LANDSCAPE CONTRACTOR SHALL PROVIDE THE PLANTERS WITH AN APPROVED SOIL MIX.

CONTRACTOR SHALL SUBMIT TO THE LANDSCAPE ARCHITECT A SOIL SAMPLE AND A SOIL MATERIAL RATIO CHART FOR APPROVAL PRIOR TO INSTALLATION OF THE SOIL. SOIL MIX SHALL BE A SPECIAL MIX TO PROVIDE POROSITY FOR DRAINAGE AND CONTAIN AMENDMENTS: FERLITE OR (SIMILAR) TO REDUCE SOIL DENSITY AND WEIGHT. SOIL MIX SHALL BE AS PER ATLAS PEAT AND SOIL OR TOM WATERS INC. SOIL MIX OR AN APPROVED EQUAL TO CONTAIN EQUAL OR FORMULATED RATIOS OF THE FOLLOWING:

1. SILICA
2. SOIL
3. COMPOST
4. FERLITE
5. SHAVINGS

THE CONTRACTOR SHALL BE RESPONSIBLE TO FILL THE PLANTING MIX TO A DEPTH WHICH WILL BE 4" FROM THE TOP OF THE PLANTING WALL. SOIL & BALLAST ROCK QUANTITIES ARE APPROX. & WILL BE THE RESPONSIBILITY OF THE CONTRACTOR FOR FINAL GRADE AS PER THIS NOTE.

WALL IMPERMEABILIZATION, DRAINS AND EYE HOOKS SHALL BE PREPARED & INSTALLED BY THE GENERAL CONTRACTOR.

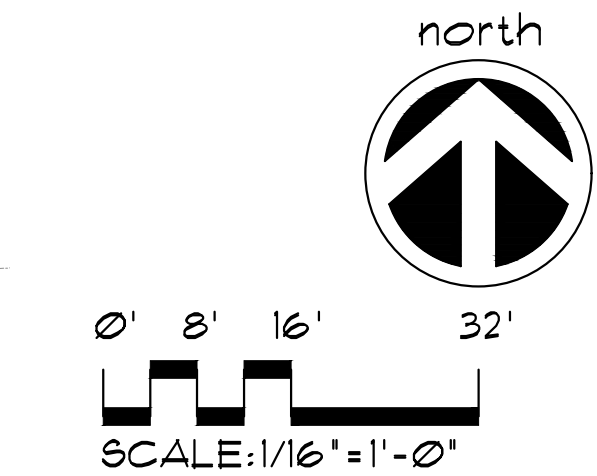
THE LANDSCAPE AND IRRIGATION CONTRACTORS SHALL COORDINATE ALL WORK WITH THE PROJECT MANAGER AND ALL PERTINENT SUBCONTRACTORS TO INSURE A PROFESSIONAL EXPEDITIOUS PROCESS.

ALL PLANTING BEDS SHALL BE MULCHED WITH AN APPROVED RECYCLED MULCH, OR AN APPROVED EQUAL. SEE 'LANDSCAPE NOTES'.

THE CONTRACTOR SHALL SUBMIT PHOTOS FOR ALL SPECIMEN PLANT MATERIAL (ALL PALMS AND TREES) TO THE L.A. FOR APPROVAL PRIOR TO PLANTING.

PLANTLIST

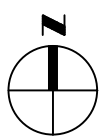
SYM.	NATIVE	*	NAME	BOTANICAL NAME	SPECIFICATION
PALMS					
AM3	5		CHRISTMAS PALM	<i>Adonidia merrillii</i>	FG, 10' o.s., TPL., full head
GROUNDCOVERS					
FG3	40		'GREEN ISLAND' FICUS	<i>Ficus 'Green Island'</i>	3 gal, 18" x 18", 18" o.c., full
TOPSOIL:					
15 C.Y. '2100 MIX' FOR PLANTING-PER ATLAS PEAT AND SOIL FOR PLANTER BOXES					
BASED UPON A 2' DEPTH-CONTRACTOR SHALL VERIFY DEPTH PRIOR TO PLANTING.					
MULCHING:					
2 C.Y./- PINE BARK NUGGETS 3' DEPTH, SPREAD IN PLACE, ATLAS PEAT AND SOIL					
PROVIDE SAMPLE FOR APPROVAL PRIOR TO INSTALLATION					
--- TOPSOIL, SOD AND MULCH QUANTITIES SHOWN ARE APPROXIMATE, CONTRACTOR					
TO PROVIDE A UNIT PRICE PER UNIT AND WILL BE PAID ON THAT UNIT PRICE BASIS					
UPON FINAL INSPECTION AND APPROVAL.					



A WRITTEN TREE REMOVAL PERMIT IS REQUIRED FROM THE CITY OF MIAMI BEACH PRIOR TO REMOVAL OF ANY TREES OR PALMS FROM THIS SITE.

SEE SHEET L-3 FOR LANDSCAPE DETAILS, NOTES, SPECIFICATIONS, ETC.

ROOF LEVEL LANDSCAPE PLAN



MIAMI BEACH
MIAMI BEACH
340 WEST 42ND STREET MIAMI BEACH, FLORIDA
CATON OWNER, LLC
3921 ALTON RD SUITE 138, MIAMI BEACH, FL 33140

ARCHITECT OF RECORD
ARQUITECTONICA

2900 Oak Avenue
Miami, Florida 33133
T 305.372.1912
F 305.372.1175
www.arquitectonica.com

STRUCTURAL ENGINEER:

M.E.P. ENGINEER:

MIAMI, FL 33122

LANDSCAPE ARCHITECT

MIAMI, FL 33133

CIVIL ENGINEER:

MIAMI, FL 33144

CONSULTANT:

CONSULTANT:

LIGHTING CONSULTANT:

SEAL / SIGNATURE / DATE

JAMES F. SOCASH
R.L.A. # 0001132
SITE PLAN SUBMITTAL

OFFICE REGISTRATION #: AA C000465

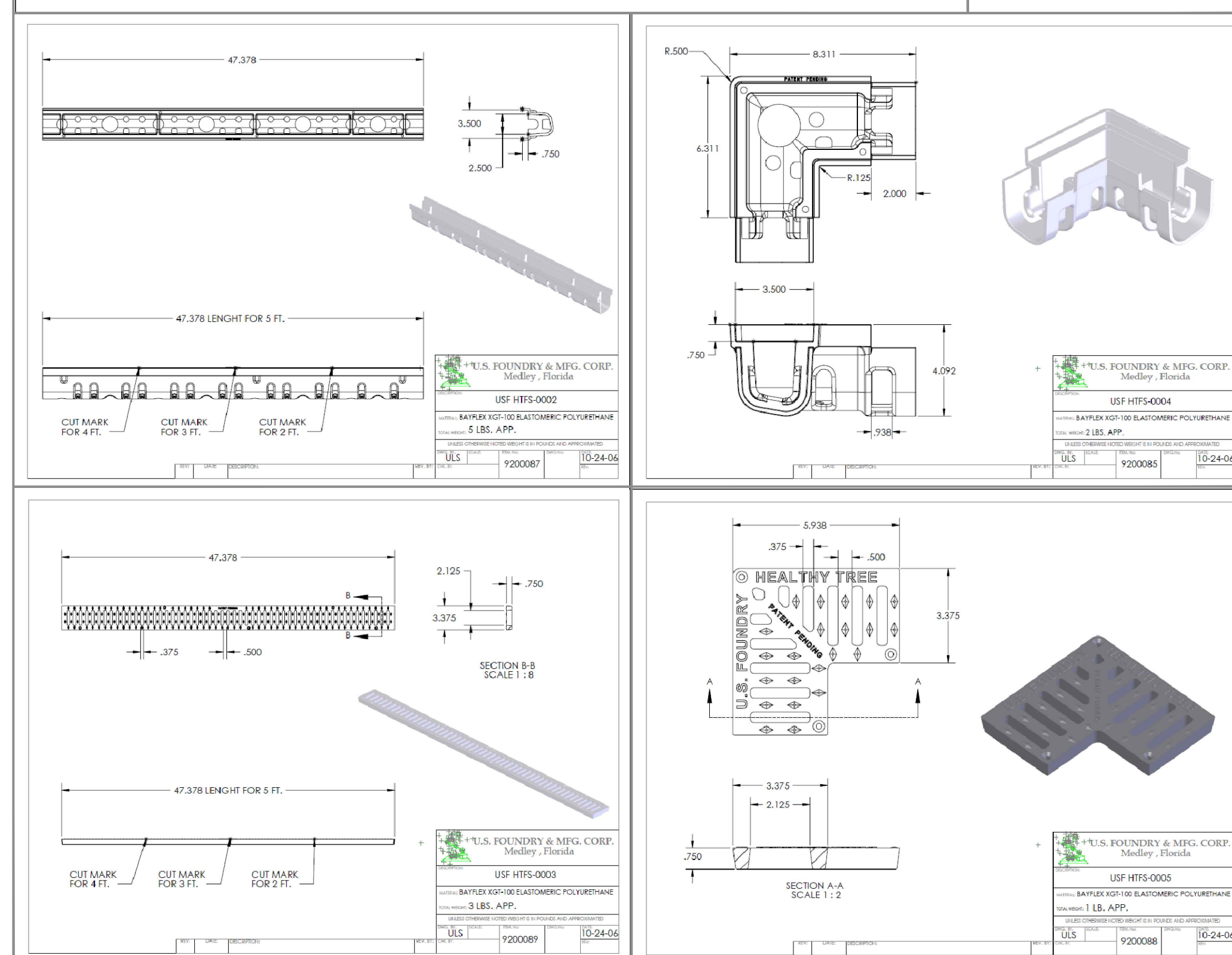
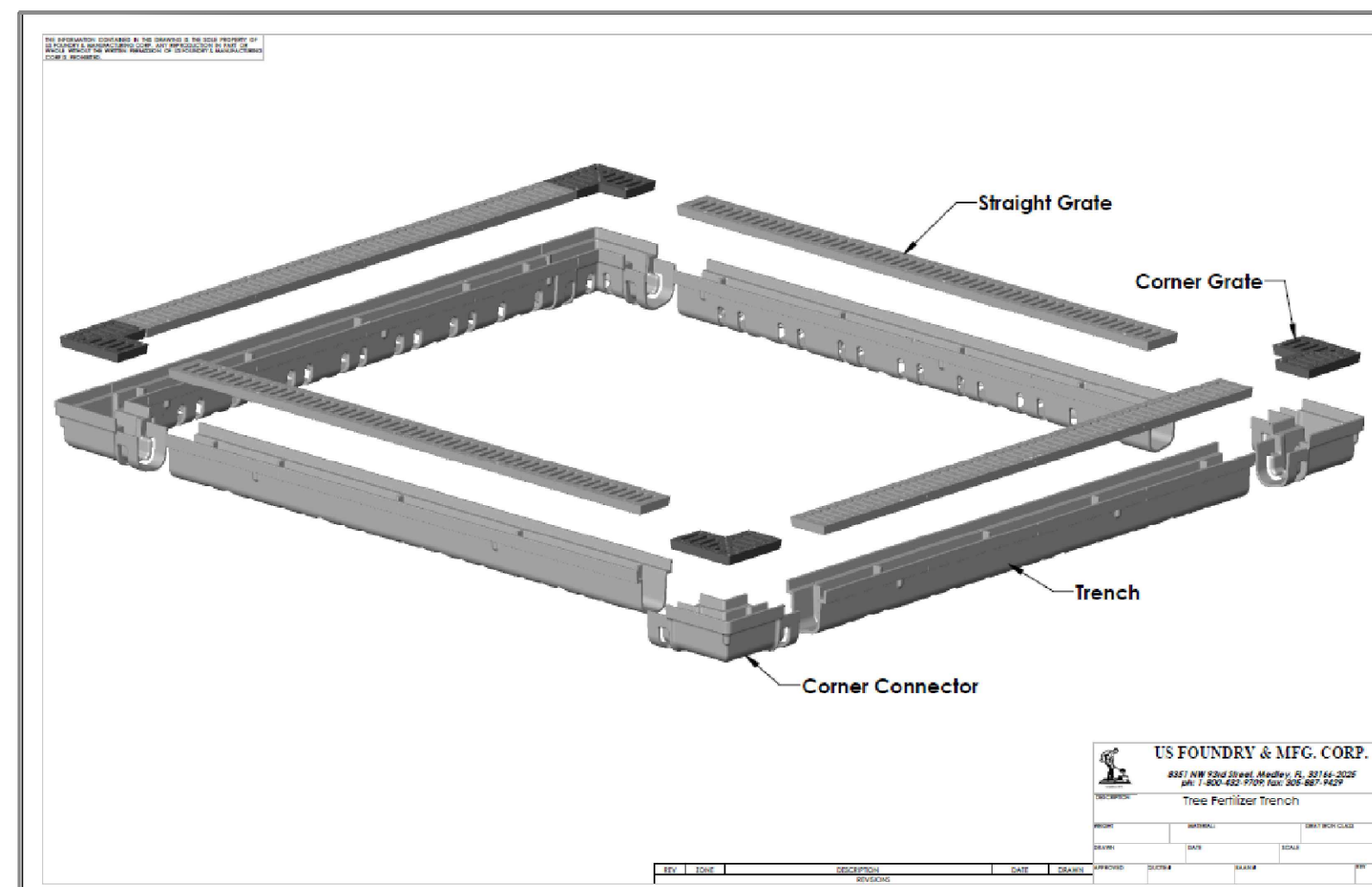
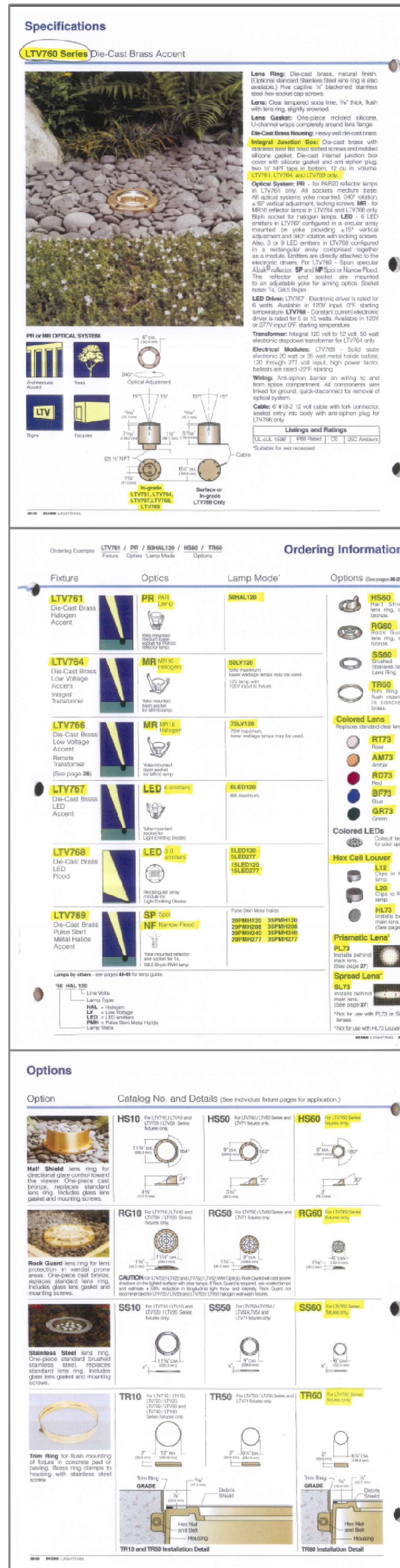
Date Revision

Issue # Issue Date / For

ARQ Project No.: 3346
Drawn by:
Approved by:

SHEET INDEX

L-2



BONDED AGGREGATE "ADDAPAVE" TYPICAL DETAILS

